

PARTS & INSTALLATION INSTRUCTIONS
MEYER H.M.B.F. SNOW PLOW MOUNTING
TRUCKS UP TO 27,000 LB. G.V.W.

**THIS SNOW PLOW MOUNTING IS DESIGNED FOR USE ON ALL
 CLASS 4, 5, 6 TRUCKS AND CLASS 7 TRUCKS OF 27,000 MAXIMUM G.V.W.**

IMPORTANT NOTICE

End user must be given this instruction sheet prior to delivery of this Snow Plow.

The equipment you have just purchased should only be used on vehicles equipped with the Manufacturer's Snow Plow Preparation Packages. Snow Plowing without the original Snow Plow Preparation Package may damage your vehicle and the added weight to the equipment may impair the operation and control of the vehicle. Snow Plowing with a vehicle that the manufacturer does not recommend for that purpose may void your new vehicle warranty. If your vehicle is not originally equipped with the Snow Plow Package, additional parts may be necessary before snow plowing. Owners of these vehicles should consult their dealers before purchase or installation of such parts. CAUTION: the installation, on any vehicle, of these parts is not a full substitute for the original equipment Snow Plow Preparation Package. **Warning: Lift Arm extends beyond bumper of vehicle. To minimize damage from a front-end collision, Lift Arm should be removed from vehicle when Snow Plow is removed.**

PARTS LIST

ITEM	PART NO.	QTY.	DESCRIPTION
	16486	1	MOUNTING CARTON H.M.B.F.
			Consists of the following two cartons:
	16493	1	• Frame Parts - H.M.B.F.
1	10945	1	•• Lift Frame
2	10946	1	•• Bumper Mounting Plate
3	10947	1	•• Bumper Channel
4	10241	1	•• Brace L.H.
5	10242	1	•• Brace R.H.
	16492	1	• Mounting Parts - H.M.B.F.
6	10243	2	•• Mounting Clip
7	10949	2	•• Side Member
8	10951	2	•• Support Angle
9	10948	2	•• Bumper Extension Angle
10	10953	2	•• Bumper Clip
11	14219	1	•• Lift Arm
	08555	1	•• HARDWARE BAG - H.M.B.F.
12	10286	2	••• Rivet
13	20420	2	••• Cotter Pin
14	20141	14	••• Bolt H 5/8-11 x 2" Gr.5
15	20170	4	••• Bolt H 5/8-11 x 3-1/2" Gr.5
16	20146	2	••• Bolt H 5/8-11 x 3-1/4" Gr.5
17	20166	4	••• Bolt 3/4-10 x 2-1/2" Gr.5
18	20166	2	••• Bolt 3/4-10 x 3-3/4" Gr.5
19	20309	17	••• Locknut 5/8-11
20	20310	10	••• Locknut 3/4-10
21	20357	14	••• Flatwasher 5/8
22	21260	4	••• Flatwasher 3/4
23	20144	1	••• Bolt H 5/8-11 x 2-3/4" Gr. 5
	15" Sector		
ITEM	PART NO.	QTY.	DESCRIPTION
	16487	1	SECTOR A-FRAME CARTON
	12793	1	• Sector
24	13604	1	• A- Frame
	07017	6	• Trip Spring
	09916	1	• Snow Plow Marker Kit
	08556	1	• SNOW PLOW HARDWARE BAG
	07015	2	•• Pivot Pin w/Cotter
25	21984	2	•• Linch Pin
	12150	6	•• Eye Bolt w/Locknuts
26	10958	2	•• Hinge Pin
	20171	1	•• Bolt H 3/4-10 x 3-3/4" Gr.5
	20310	1	•• Locknut 3/4-10
	20318	12	•• Nut - Eslock, 5/8"
	20420	2	•• Cotter Pin

Parts indented are included in the carton, bag or assembly under which they are indented. When ordering parts, furnish Part No., Name, and Description. Also furnish Vehicle Model and Year. Type of Hydraulic Unit and Moldboard Size.

GENERAL INFORMATION

CAUTION: Always disconnect battery before beginning installation.

DO NOT BURN holes or **WELD** vehicle frame. This may cause frame failure.

After first use, retighten all mounting bolt connections to specified torque. All mounting bolt connections to be checked periodically for tightness.

Locknuts are furnished **DO NOT** tighten bolts and nuts until installation is complete (unless otherwise specified), then be sure to tighten all attaching parts per specified torque chart.

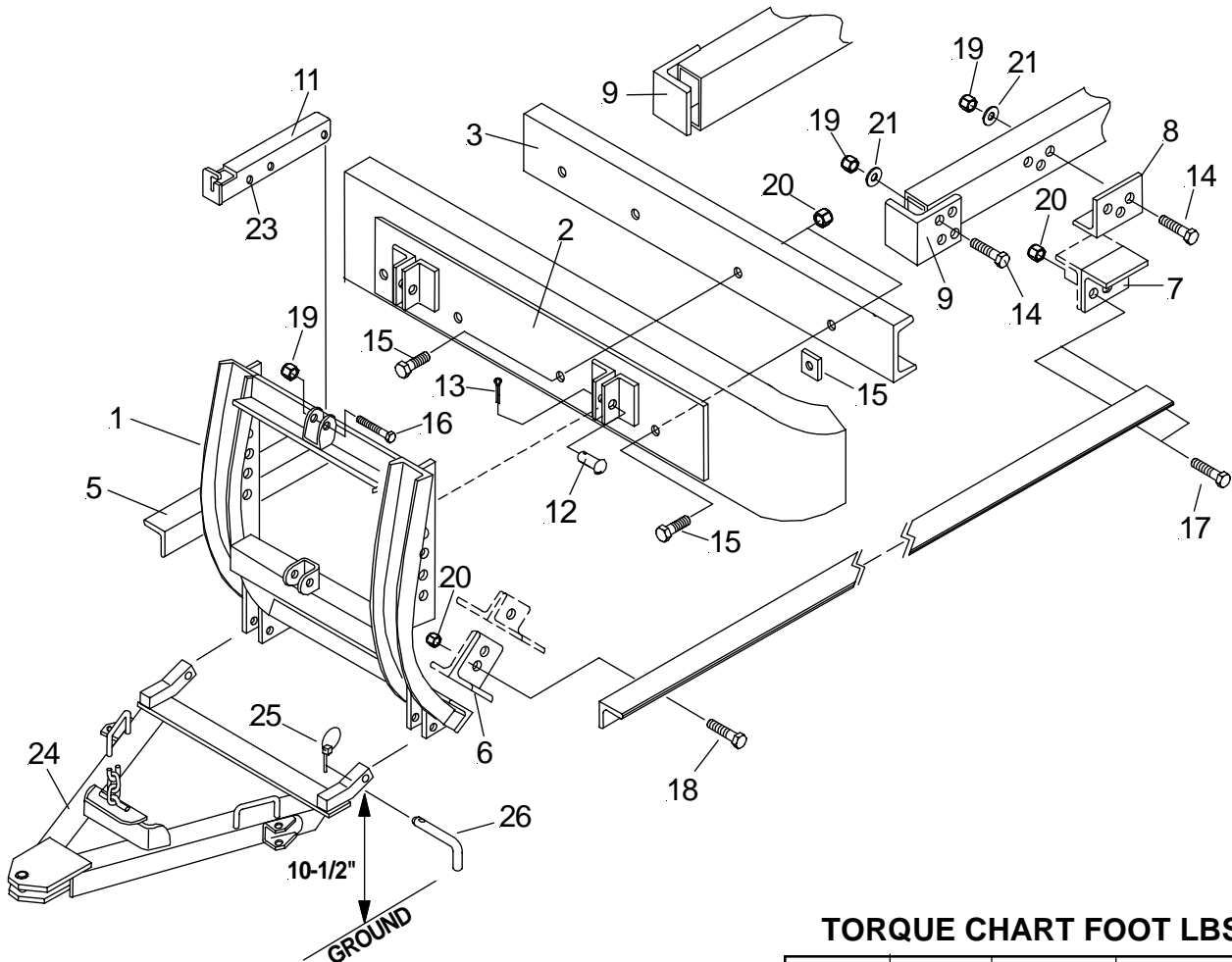
Check contents against the parts list to determine all are correct and included, and also to familiarize yourself with them.

NOTE: It is important that the Meyer harness, all wires from the Meyer light switch, and all other electrical wires be routed around hot or moving engine parts, and any sharp metal. Protection must be provided to guard against wire damage at these points. All excess or loose wires must be neatly secured using wire ties.




SAFETY PRECAUTIONS should be used when **Hydraulic Unit is in OPERATION** and plow is in a **RAISED** position. **Lower plow to ground when vehicle is PARKED.**

OVERHAUL and **SERVICE INFORMATION** are covered on separate instructions.

Follow these instructions explicitly. Warranty does not apply to a Meyer product which has been negligently or improperly assembled or installed.



TORQUE CHART FOOT LBS.

Bolt Nut Size	Gr. 2 	Gr. 5 	Gr. 8 
1/4 - 20	4 - 5		
5/16 - 18	9 - 11		
3/8 - 16	17 - 20	26 - 29	
7/16 - 14		42 - 46	60 - 66
1/2 - 13		64 - 72	90 - 100
5/8 - 11		127 - 141	179 - 198
3/4 - 10		227 - 251	

INSTALLATION INSTRUCTIONS

This is a universal mounting which is adaptable to any large truck up to G.V.W. of 27,000 lbs. Cutting, welding, and drilling are required for all installations of this mounting.

- A. Remove truck bumper. It is probable that any original bumper brackets will not be reused. This will depend on each vehicle's front frame configuration. The bumper will be sandwiched between the Bumper Mounting Plate (2) and Bumper Channel (3).
- B. Locate Bumper Extension Angles (9) on end of truck frame. They can be on the inside, outside, top or bottom of frame, so as not to interfere with spring shackles. It is suggested that the Bumper Extension Angles (9) be clamped in the desired position along with the Bumper Channel (3), vehicle bumper and Bumper Mounting Plate (2) before any holes are drilled. Hold the Lift Frame (1) in position and verify that the clevis hole height of 10-1/2" can be achieved. If not, then items 9, 3, and 2 must be adjusted until the 10-1/2" dimension is obtained.
- C. After the 10-1/2" clevis height is obtained, drill at least three 11/16" holes in each Bumper Extension Angle (9) and truck frame. Use existing truck frame holes if possible. The Bumper Channel (3) is then welded to the Bumper Extension Angles (9) and this assembly bolted to the truck frame with 5/8 - 2" bolts (14), washers and locknuts.
- D. Clamp the truck bumper and Bumper Mounting Plate (2) to the Bumper Channel (3) being certain they are positioned at the proper height as discussed in paragraph "B." Drill four 13/16" holes as shown through Bumper Mounting Plate (2) truck bumper and Bumper Channel (3) and install 3/4 x 3-1/2" bolts (15) and locknuts.
- E. If desired, the Bumper Clip (10) can be drilled with a hole to accept an original bumper bolt and welded to the Bumper Channel (3) to accept an original lower hole in the truck bumper.
- F. Attach Lift Frame (1) to Bumper Mounting Plate (5) using Rivets (12) and Cotter Pins (13) to obtain a dimension of 10-1/2" as shown. Temporarily clamp the Braces (4&5). Mounting clips (6). Sidemembers (7) and Support angle (8) in position. Check for spring clearance and full motion of suspension and steering components between these pieces. The Side Members (7), Braces (4&5) and Mounting Clips (6) can be installed in different positions to obtain necessary clearance. It may be possible to attach Braces (4&5) directly to truck frame in some cases, and can be cut shorter if necessary.
- G. After being correctly positioned, drill three holes in truck frame using the Support Angles (8) as a guide. NOTE: Be sure back side of frame is clear of any brake or fuel lines before drilling. Attach using 5/8 x 2" Bolts (14) and Locknuts (19). Weld the sidemembers (7) to the Support Angle (8) and the Mounting Clip (6) to the Lift Frame (1).
- H. Drill 13/16" holes in Braces (4&5) and sidemembers (7) and attach using 3/4-10 2-1/2" bolts (17) and Locknuts (20). Attach front of Braces (4&5) to Mounting clip (6) using 3/4-10 x 3-3/4" bolts (18) and Locknuts (20)
- I. **IMPORTANT:** Once installation is complete, verify that mounting pieces do not interfere with full movement of steering or suspension and can not contact any engine components or accessories.
- J. Attach Hydraulic Unit and Lift Arm (11) to the lift frame using 5/8 x 3-14" bolts (16) and locknuts. Lift piston is attached to forward hole in Lift Arm (11) using 5/8 x 2-3/4" Bolt (23) and locknut (20).
- K. Assemble the Sector, A-Frame and Moldboard and attach to the Lift Frame using Hinge Pins (26) and Hairpin Cotters (25). Allow sufficient slack in chain to enable Moldboard to follow ground contours.

NOTICE: Meyer Products assumes no responsibility for installations not made in accordance with these instructions.

Meyer Products reserves the right, under its continuing product improvement program, to change construction or design details, specifications and prices without notice or without incurring any obligation.