



PARTS & INSTALLATION INSTRUCTIONS

LAND ROVER DEFENDER

4 x 4 Vehicles

IMPORTANT NOTICE

End user must be given this instruction sheet prior to delivery of this Snow Plow.

The equipment you have just purchased should only be used on vehicles equipped with the Manufacturer's Snow Plow Preparation Packages. Snow Plowing without the original Snow Plow Preparation Package may damage your vehicle and the added weight to the equipment may impair the operation and control of the vehicle. Snow Plowing with a vehicle that the manufacturer does not recommend for that purpose may void your new vehicle warranty. If your vehicle is not originally equipped with the Snow Plow Package, additional parts may be necessary before snow plowing. Owners of these vehicles should consult their dealers before purchase or installation of such parts. CAUTION: the installation, on any vehicle, of these parts is not a full substitute for the original equipment Snow Plow Preparation Package.

Warning: Lift Arm extends beyond bumper of vehicle. To minimize damage from a front-end collision, Lift Arm should be removed from vehicle when Snow Plow is removed.

Mounting Carton L/PAF 18095 / Mounting Carton W/PAF 18096DP

Parts List

Item	Part No.	PartNo.	Qty.	Description
	18095	18096DP	1	Mounting Carton
1	11935	11935	1	• Clevis Frame Weldment
2	11941	11941	1	• L.H. Strap
3	11942	11942	1	• R.H. Strap Weldment
4	10514	10514	1	• Lift Arm
	-----	12978	2	• Trip Spring
	-----	12959	1	• Pivot Bar
	-----	13778	1	• A-Frame Tubular
5	11462	11462	2	• Receiver Tube Cap-TM
	08749	08749	1	Hardware Bag
6	11006	11006	2	• Hinge Pin
7	20096	20096	2	• Bolt H 1/2-13 x 1-3/4" Gr. 5
8	20106	20106	1	• Bolt H 1/2-13 x 4-1/2" Gr. 5
9	20144	20144	1	• Bolt H 5/8-11 x 2-3/4" Gr. 5
10	20146	20146	2	• Bolt H 5/8-11 x 3-1/4" Gr. 5
11	20307	20307	3	• Locknut Esna 1/2-13
12	20309	20309	3	• Locknut Esna 5/8-11
13	20353	20353	4	• Flatwasher 3/8"
14	20355	20355	8	• Flatwasher 1/2"
15	21984	21984	2	• Hair Pin Cotter
	08626	08626	1	Kit: Light Elevation
16	11368	11368	2	• Bracket
17	20095	20095	2	• Bolt 1/2-13 x 1-1/2" Gr. 5
18	20307	20307	2	• Locknut Esna 1/2-13
	-----	08156	1	• Snow Plow Hardware Bag
	-----	08852	1	• Marker Kit
19	11275	11275	1	Lift Frame

Parts indented are included in the assembly under which they are indented.

Meyer Products reserves the right, under its continuing product improvement program, to change construction or design details, specifications and prices without notice or without incurring any obligation.

Meyer Products LLC
18513 Euclid Ave. • Cleveland, Ohio 44112-1084
Phone 486-1313 (Area Code 216)
www.meyerproducts.com • email info@meyerproducts.com



Meyer Products LLC
6 Angell Lane • Damariscotta, ME 04543-4507
Phone 563-2227 (Area Code 207)
www.meyerproducts.com • email info@meyerproducts.com

GENERAL INFORMATION

CAUTION: Always disconnect battery before beginning installation.

DO NOT BURN holes or **WELD** vehicle frame. This may cause frame failure.

After first use, re-tighten all mounting bolt connections to specified torque. All mounting bolt connections to be checked periodically for tightness.

Locknuts are furnished **DO NOT** tighten bolts and nuts until installation is complete (unless otherwise specified), then be sure to tighten all attaching parts per specified torque chart.

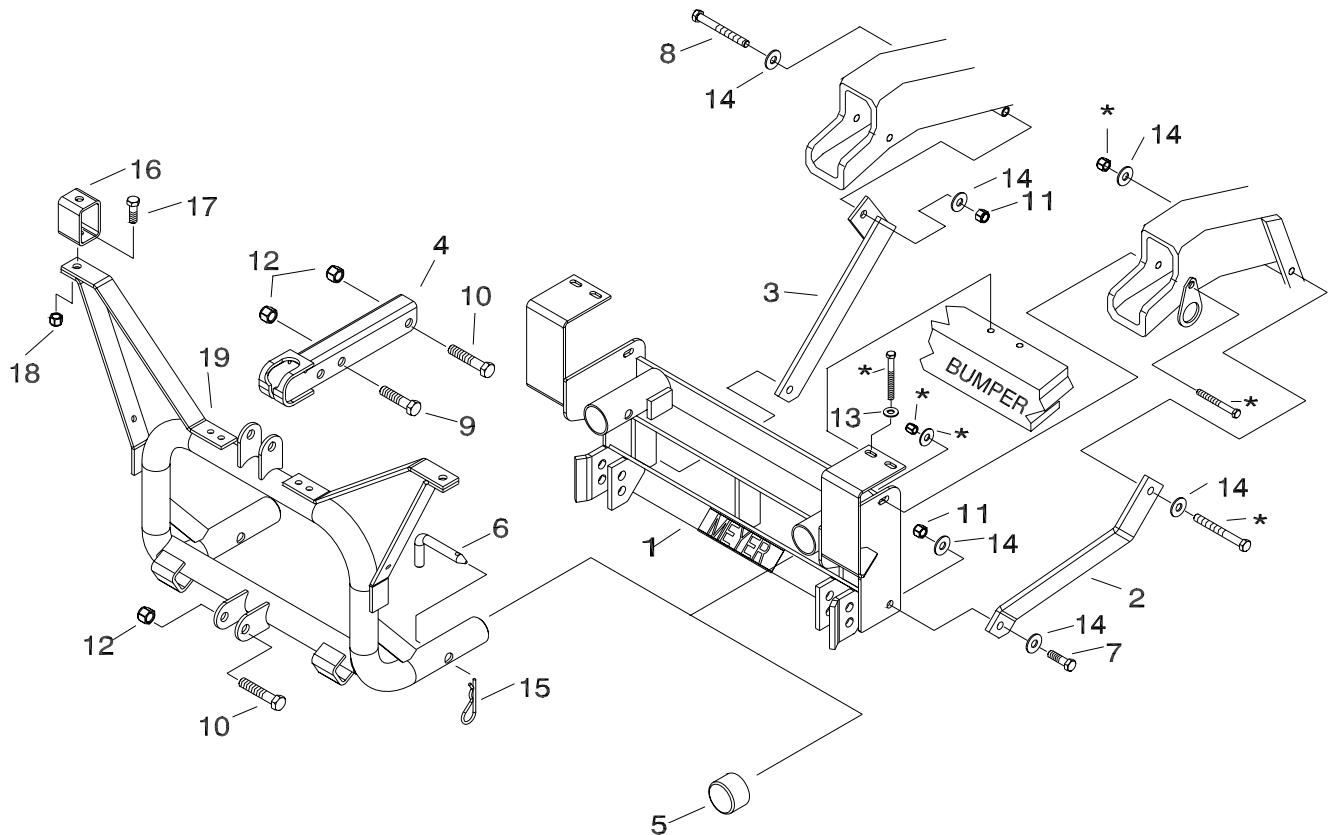
Follow these instructions explicitly. Warranty does not apply to a Meyer product which has been negligently or improperly assembled or installed.

NOTE: It is important that the Meyer harness, all wires from the Meyer light switch, and all other electrical wires be routed around hot or moving engine parts, and any sharp metal. Protection must be provided to guard against wire damage at these points. All excess or loose wires must be neatly secured using wire ties.

Check contents against the parts list to determine all are correct and included, and also to familiarize yourself with them.

SAFETY PRECAUTIONS should be used when **Hydraulic Unit is in OPERATION** and plow is in a **RAISED** position. **Lower plow to ground when vehicle is PARKED.**

OVERHAUL and **SERVICE INFORMATION** are covered on separate instructions.






* Denotes original vehicle fasteners.

INSTALLATION INSTRUCTIONS

- A. Remove the front grill (black) on the vehicle by unscrewing several phillips head screws. Retain, the grill will be reinstalled later. **Note: On vehicles equipped with air conditioning, the complete grill assembly will need to be removed (black and vehicle color assembly). This will also be reinstalled later.**
- B. Remove the two bolts/washers on the top of the vehicle bumper on both sides. Retain, the bolts will be reused later in the install, washers will not.
- C. Remove the bolt that is holding on the tow clip on both sides of the frame. Retain this hardware it will be reused later in the install.
- D. Position the Clevis Frame's (1) top plates over the top of the bumper and align slots to where the bolts were removed in step B. Loosely attach on both sides using the bolts retained in step B, and 3/8" flatwashers (13) per illustration. Do not tighten at this time.
- E. Align the slot on each side plate of Clevis Frame (1) to where the hardware was removed in step C. Attach through tow clips using the hardware that was retained in step C. Do not tighten at this time.
- F. Remove driver side lower Pan Hard Bracket through bolt. Attach the LH Strap (2) to the outside of the Pan Hard Bracket using the same hardware with 1/2 flatwashers (14) per the illustration. Do not tighten at this time.
- G. Attach the bottom hole on LH Strap (2) to the **outside** of the DS side plate using a 1/2-13 x 1 3/4" bolt (7), 1/2" flatwashers (14), and 1/2-13 locknut (11). Do not tighten at this time.
- H. Attach the upper hole on the RH Strap Weldment (3) to the sleeve on the inside of the passenger side frame rail with 1/2-13 x 4 1/2" bolt (8), 1/2" flatwashers (14), and 1/2-13 locknut (11) per illustration. Do not tighten at this time.
- I. Attach the lower hole on the RH Strap Weldment (3) to the **inside** of the PS side plate using a 1/2-13 x 1-3/4" bolt (7), 1/2" flatwashers (14), and 1/2-13 locknut (11). Do not tighten at this time.
- J. Push Clevis back and tighten all fasteners to their proper torque. Tighten bolts in the same order they were assembled to the vehicle.
- K. Reinstall grill/ grill assembly that was removed in step A.
- Note: Before installing lift frame tubing to clevis frame, liberally coat ends of lift frame with chassis grease anti-seize lubricant.**
- L. Install Lift Frame (19) into the tubes on the Clevis Frame.
- M. Secure Lift Frame (19) to Clevis Frame using Hinge Pin (6) and Hair Pin Cotter (15).
- N. Attach lift arm (4) to lift frame (19) using 5/8-11 x 3-1/4 bolt (10) and locknut (12). Mount Hydraulic unit to lift frame using 5/8-11 x 3-1/4 bolt (10) and locknut (12), and to lift arm (4) using 5/8-11 x 2-3/4 bolt (9) and locknut (12). **(SEE LIFT ARM WARNING)**
- O. Install Light Extensions (16) Part No. 08626 using 1/2-13 x 1-1/2 bolt (17) and locknut (18).
- P. Install hydraulic system and snow plow lights per separate instructions.
- Q. Pre-Assemble Snow Plow Assembly, A-frame and Pivot Bar per separate instructions.
- R. Attach the A-Frame chain to the Lift Arm (4) allowing sufficient slack to enable the Snow Plow to follow ground contour while plowing.
- Note: When the lift frame module (19) is removed from the vehicle, the insides of the clevis frame (1) receiver tubes and outside ends of the lift frame should be coated with chassis grease / anti-seize lubricant and the protective receiver tube caps (5)**

TORQUE CHART FOOT LBS.

Bolt Nut Size	Gr. 2 	Gr. 5 	Gr. 8 
1/4 - 20	4 - 5		
5/16 - 18	9 - 11		
3/8 - 16	17 - 20	26 - 29	
7/16 - 14		42 - 46	60 - 66
1/2 - 13		64 - 72	90 - 100
5/8 - 11		127 - 141	179 - 198
3/4 - 10		227 - 251	

Meyer Products assumes no responsibility for installations not made in accordance with these instructions.

4. Summary

The snowplough retaining device to be fitted onto N1 category vehicles, the specimen presented and tested, and the further types presented as per the documentation, are compliant in terms of design and safety.

The salt spreader retaining device to be fitted onto N1 category vehicles, the specimen presented and tested, and the further types presented as per the documentation, are compliant in terms of design and safety.

The snowplough retaining devices can be installed onto motor vehicles of the following types:

Car type	Meyer Classic	
	Type Cod	Year
Toyota Hilux (since 2005)	18092	2005-2009
Toyota Hilux (1997-2005)	18091	1997-2005
Mitsubishi L200 (1987-2006)	18090	1997-2005
Nissan NP 300 (1998-2005)	18111	1998-2005
Ford Ranger (since 1998-2006)	18099/1811	1999-
Mazda B2500 (1998-2006)	18099/1811	1993-
Jeep Wrangler TJ (1997-2006)	18080	1997-
Jeep Wrangler JK (since 2007)	18119	2007-
Land Rover Deffender (1990-1994)	18096	1990-1994

Installation of the snowplough retaining device leaves the width and length of the vehicle unchanged.