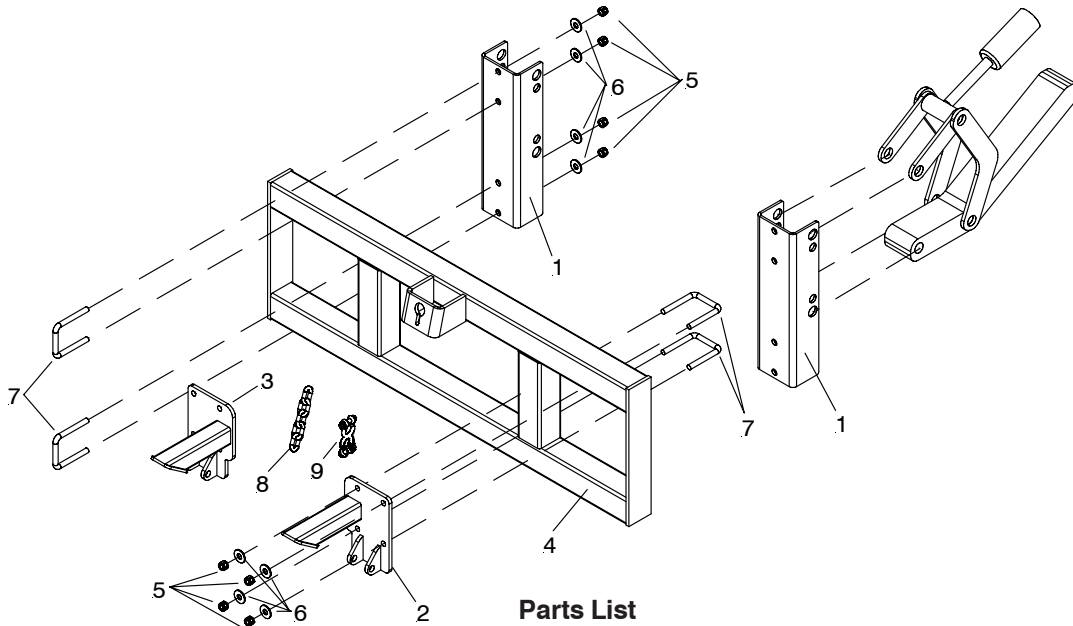


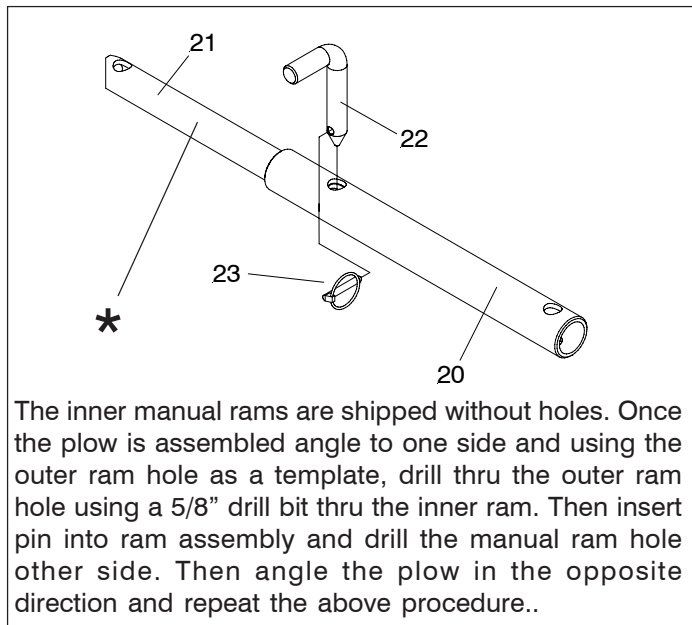
Universal Tractor Mounting Part No. 17161



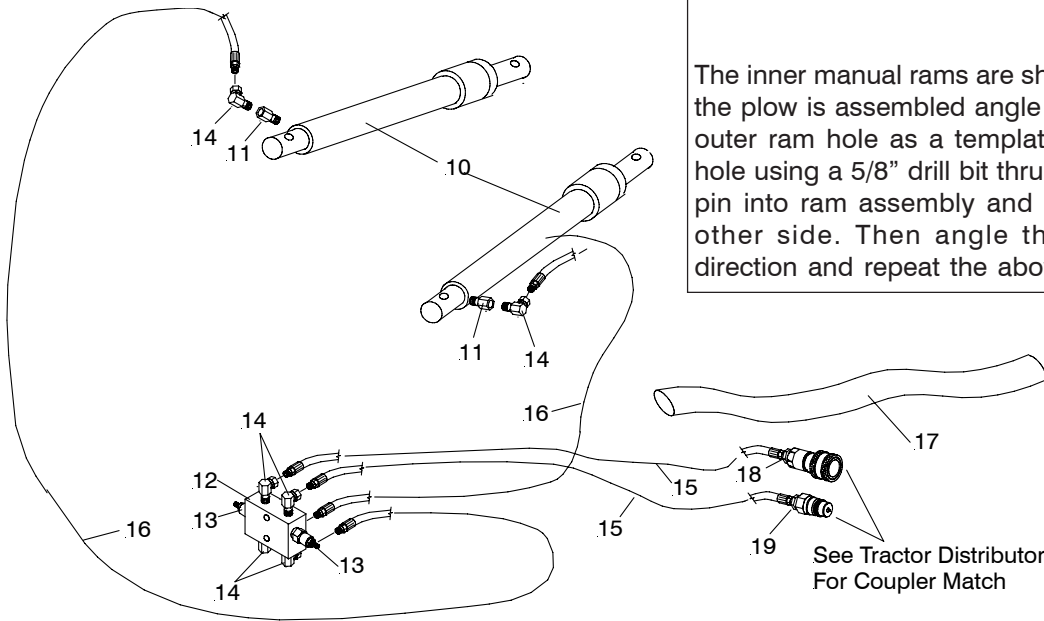
Parts List

Item	Part No.	QTY	Description
	17161		MOUNTING CARTON
1	19652	2	• Tractor Bracket
2	19753	1	• LH Clevis Assembly
3	19754	1	• RH Clevis Assembly
4	19661	1	• Lift Frame
	12978	2	• Trip Spring
	12984	1	• Pivot Bar
	13594	1	• A-Frame
	09916	1	• Plow Marker Kit
	08871	1	• HARDWARE BAG
5	20307	16	• • 1/2-13 Locknut
6	20355	16	• • 1/2 Flatwasher
7	22667	8	• • 4" Square U-Bolt
8	22668	1	• • 5/16 x 12" Chain
9	22669	1	• • Chain Connecting Link
	08511	1	• SNOW PLOW HARDWARE BAG
	11006	2	• • Hinge Pins
	22083	2	• • Linch Pin
	12150	2	• • Eyebolts
	20318	4	• • Eslock Nuts 5/8 - 11
	13598	2	• • Pivot Bolts
	13591	1	• • King Bolt
	20150	2	• • Bolt H 5/8 - 11 x 4 1/2"
	20309	7	• • Locknuts, 5/8 - 11
	08870	1	OPTIONAL TRACTOR POWER ANGLE KIT
10	05877	2	• Ram
11	22652	2	• Adapter Male SAE 6 to Female 1/4 NPT
	15915	1	• Hydraulic Assy.
12	15913	1	• • 1/4" NPT Manifold
13	15914	2	• • 3800 P.S.I. Relief Valve
14	22410	6	• • 1/4" x 90° Swivel Adapter
15	22412	2	• • 1/4" x 90" Hose
16	22411	2	• • 1/4" x 32" Hose
17	22413	1	• • 42" Protective Cover
18	22414	1	• • 1/2" x 1/4" Red. Bushing
19	22415	1	• • 1/2" x 1/4" Red. Bushing w/.054 orifice
	08872		OPTIONAL TRACTOR TM-SERIES MANUAL ANGLE KIT
20	19740	2	• • Manual Cylinder Outer Tube Assy.
21	19739	2	• • Manual Cylinder Inner Tube Assy.
22	19063	2	• • 5/8" Pin
23	22083	2	• • Lynch Pin

Parts indented are included in the assembly under which they are indented.



The inner manual rams are shipped without holes. Once the plow is assembled angle to one side and using the outer ram hole as a template, drill thru the outer ram hole using a 5/8" drill bit thru the inner ram. Then insert pin into ram assembly and drill the manual ram hole other side. Then angle the plow in the opposite direction and repeat the above procedure..



INSTALLATION INSTRUCTIONS

- A. Remove pins that hold bucket loader or whatever is attached to end of tractor's arms.
- B. Attach brackets (1) to tractor arms. The end of the bracket (1) with more holes should be oriented up. Pin tractor arms using existing tractor pins in the set of holes which it fits.
- C. Using 4" U-Bolts (7), 1/2" flat washers (6) and locknuts (5) attach lift frame (4) to tractor brackets (1) as shown.
- D. Using 4" U-Bolts (7) 1/2" flat washers (6) and locknuts (5) attach LH & RH Clevis assemblies (2 & 3) to the middle two vertical tubes of the lift frame (4). Keep the clevis (2 & 3) in its lowest position on the lift frame (4).
- E. Assemble moldboard using separate instructions
- F. Secure the moldboard-pivot bar-A frame assembly to tractor. Attach to clevis frame using hinge pins and lynch pins. Attach 12" chain (8) to chain that is already welded to the A-frame using connecting link (9). Attach lift chain to lift frame through keyhole slot. Allow sufficient slack for the moldboard to follow ground contours. Attach loose end of chain with cable tie.
- G. **HYDRAULICS** (power angle)-Locate a spot for the hydraulic manifold assy. (12). The hoses must be positioned to avoid rubbing or pinching. It may be necessary to fabricate a bracket, depending on the tractor. Attach block with 5/16-18 x 2-1/4" bolts, and locknuts from kit 15915.
- H. Connect 32" hoses (15) to LH and RH cylinders. See Figure 4.
- I. Connect 90" hoses (15) to hydraulic system on tractor. Tractor end must accept 1/2" male NPT. Orifice (.054" diameter) on end of one 90" long hose (15) should be maintained.

Meyer Products LLC reserves the right, under its continuing product improvement program, to change construction or design details, specifications and prices without notice or without incurring any obligation.

Meyer Products LLC
 18513 Euclid Ave. • Cleveland, Ohio 44112-1084
 Phone 486-1313 (Area Code 216)
 www.meyerproducts.com • email info@meyerproducts.com



Meyer Products LLC
 6 Angell Lane • Damariscotta, ME 04543-4507
 Phone 563-2227 (Area Code 207)
 www.meyerproducts.com • email info@meyerproducts.com