



# PARTS & INSTALLATION INSTRUCTIONS

## MEYER SNOW PLOW MOUNTING

### 2003 & LATER DODGE 2500/3500 MODEL 4WD TRUCKS

**Vehicle must be equipped with the Snow Plow Preparation Package**

#### IMPORTANT NOTICE

**End user must be given this instruction sheet prior to delivery of this Snow Plow.**

The equipment you have just purchased should only be used on vehicles equipped with the Manufacturer's Snow Plow Preparation Packages. Snow Plowing without the original Snow Plow Preparation Package may damage your vehicle and the added weight to the equipment may impair the operation and control of the vehicle. Snow Plowing with a vehicle that the manufacturer does not recommend for that purpose may void your new vehicle warranty. If your vehicle is not originally equipped with the Snow Plow Package, additional parts may be necessary before snow plowing. Owners of these vehicles should consult their dealers before purchase or installation of such parts. CAUTION: the installation, on any vehicle, of these parts is not a full substitute for the original equipment Snow Plow Preparation Package.

**Warning: Lift Arm extends beyond bumper of vehicle. To minimize damage from a front-end collision, Lift Arm should be removed from vehicle when Snow Plow is removed.**

#### PARTS LIST

Item	Part No.	Qty.	Description		
	17135	1	<b>MOUNTING CARTON</b>		
1	11885	1	• Clevis Frame		
2	11544	2	• Receiver Tube Cap		
3	19091	1	• Side Member L.H.		
4	19090	1	• Side Member R.H.		
5	10514	1	• Lift Arm		
	08793	1	<b>HARDWARE BAG</b>		
6	11006	2	•• Hinge Pin		
7	14595	4	•• Special Bolt 3/4"		
8	19085	2	•• Sleeve		
9	20105	6	•• Bolt H 1/2-13 x 4" Gr.5		
10	20144	1	•• Bolt H 5/8-11 x 2-3/4" Gr.5		
11	20146	2	•• Bolt H 5/8-11 x 3-1/4" Gr.5		
12	20165	4	•• Bolt H 3/4-10 x 2-1/4" Gr.5		
13	20307	6	•• Locknut 1/2-13		
14	20309	3	•• Locknut 5/8-11		
15	20310	8	•• Locknut 3/4-10		
16	20355	12	•• Flatwasher 1/2"		
17	20357	6	•• Flatwasher 5/8"		
18	20359	12	•• Flatwasher 3/4 "		
19	21984	2	•• Hair Pin Cotter		
	11734	2	•• Stop Plate 2 x 2 x 1/4"		
	08626	1	• Light Elevation Kit		
20	11368	2	•• Bracket		
21	20095	2	•• Bolt H 1/2-13 x 1-1/2" Gr. 5		
22	20307	2	•• Locknut 1/2-13		
23	11255	1	<b>LIFT FRAME (Tubular)</b>		
			11" Sector	15" Sector	
Item	Part No.	Qty.	Part No.	Qty.	Description
	16505	1	16504	1	<b>SECTOR -A-FRAME CARTON</b>
	12326	1	12793	1	• Sector
24	13612	1	13608	1	• A- Frame
	07017	3	07017	4	• Trip Spring
	09916	1	09916	1	• Marker Kit
	08166	1	08314	1	• <b>PLOW HARDWARE BAG</b>
	09119	2	09119	1	•• Pivot Pin w/Cotter
25	11101	2	11101	2	•• Hinge Pin
26	22083	2	22083	2	•• Linch Pin
	09122	1	09125	1	•• King Bolt w/Locknut
	09124	3	09124	4	•• Eye Bolt w/Locknuts

**Parts indented are included in the carton, bag or assembly under which they are indented.**

Meyer Products and Diamond Equipment reserves the right, under its continuing product improvement program, to change construction or design details, specifications and prices without notice or without incurring any obligation.



# GENERAL INFORMATION

**CAUTION:** Always disconnect battery before beginning installation.

**DO NOT BURN** holes or **WELD** vehicle frame. This may cause frame failure.

After first use, retighten all mounting bolt connections to specified torque. All mounting bolt connections to be checked periodically for tightness.

Locknuts are furnished **DO NOT** tighten bolts and nuts until installation is complete (unless otherwise specified), then be sure to tighten all attaching parts per specified torque chart.

**NOTE:** It is important that the Meyer harness, all wires from the Meyer light switch, and all other electrical wires be routed around hot or moving engine parts, and any sharp metal. Protection must be provided to guard against wire damage at these points. All excess or loose wires must be neatly secured using wire ties.




Check contents against the parts list to determine all are correct and included, and also to familiarize yourself with them.

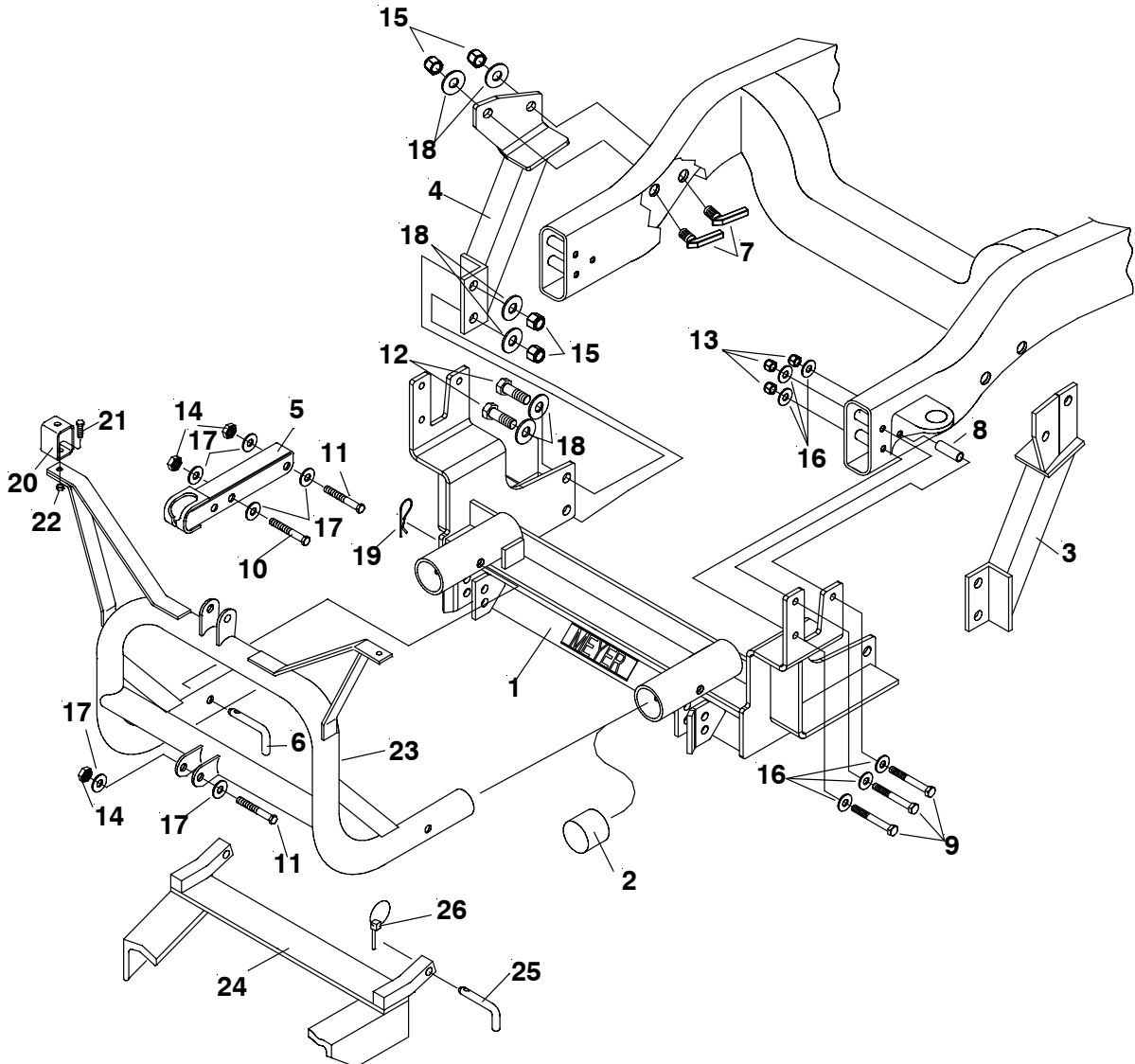
**SAFETY PRECAUTIONS** should be used when **Hydraulic Unit is in OPERATION** and plow is in a **RAISED** position. **Lower plow to ground when vehicle is PARKED.**

**OVERHAUL** and **SERVICE INFORMATION** are covered on separate instructions.

Follow these instructions explicitly. Warranty does not apply to a Meyer product which has been negligently or improperly assembled or installed.

## TORQUE CHART FOOT LBS.

Bolt Nut Size	Gr. 2 	Gr. 5 	Gr. 8 
1/4 - 20	4 - 5		
5/16 - 18	9 - 11		
3/8 - 16	17 - 20		
7/16 - 14		26 - 29	
1/2 - 13		42 - 46	60 - 66
5/8 - 11		127 - 141	179 - 198
3/4 - 10		227 - 251	



## INSTALLATION INSTRUCTIONS

- A. Remove bumper/tow hooks assembly from vehicle frame by removing the front two bolts through the frame. Retain all hardware, they will not be reused.
- B. Attach clevis frame (1) to where bolts were removed in step A using 1/2-13 x 4" bolts (9), 1/2 flatwashers (16), locknuts (13). While pushing clevis tight against the bottom of the frame snug bolts. Using the clevis frame's rear hole as a template, drill a 9/16" hole all the way through the frame on both sides. Remove clevis frame.
- C. On the outside of each frame rail only re-drill the hole to 3/4" diameter to install the sleeves (8). Reinstall clevis' (1) rear hole to frame using sleeves (8), 1/2-13 x 4" bolts (9), 1/2 flatwashers (16), locknuts (13). Reinstall bumper and clevis' front two holes using the bolts from step B. **Notes: Bumper may need to be notched out around clevis' receiver tubes.**  
**Vehicles with Towhooks: Outer tow hook bracket may need to be removed and slotted behind the bumper to allow for fit over clevis' sideplates or tow hooks may be removed completely.**

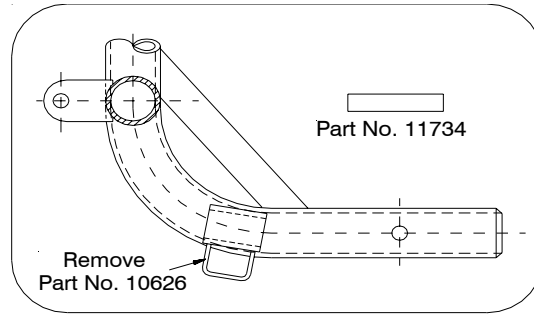


**IMPORTANT:** Clevis frame (1) must be positioned so the side plates are vertical and receiver tubes are parallel with the ground before tightening. While holding clevis tight against the bottom of frame tighten all bolts (per torque specification chart).

- D. Attach sidemembers (3&4) to the clevis frame's (1) rearmost holes using 3/4-10 x 2 1/4" bolts (12), 3/4 flatwashers (18), and locknuts (15). While pushing sidemembers (3&4) up against the frame snug bolts. Scribe sidemember's (3&4) hole locations on the frame on both sides. Remove sidemembers (3&4). Drill 1" diameter holes through the out side of the each frame rail only for installation of Special bolts (7).
- E. Carefully attach sidemembers (3&4) to frame using special bolts (7), flatwashers (18), and locknuts (15) per illustration. Reattach sidemembers (3&4) to clevis (1) using the same bolts from step D.
- F. Tighten all fasteners to their proper torque. Tighten bolts in the same order they were assembled to the vehicle.

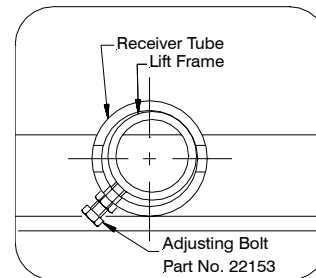
**Depending upon the S.A.F. Carton being installed, additional stops may need to be added or removed.**

- G. When installing S.A.F. Carton 16505 or 16504, additional stops (Part No. 10626) on lift frame should be removed. With S.A.F. Carton 16505 replace 10626 stops with Stop Plates 11734.



**Note: Before installing lift frame tubing to clevis frame, liberally coat ends of lift frame with chassis grease / anti-seize lubricant.**

- H. Remove adjustment bolts (Part No. 22153) from receiver tubes. Coat bolt threads with chassis grease or anti-seize lubricant. Reinstall bolts, making sure they do not protrude inside receiver tubes.



- I. Install Lift Frame (23) into the tubes on the clevis frame. Turn adjusting bolts in until contact is made with lift frame.

**Caution: Do not over tighten adjustment bolts. Adjust bolts for minimum clearance between lift frame and receiver tubes while still allowing for ease of lift frame removal. See illustration. Secure lift frame (23) to clevis frame (1) using hinge Pins (6) and hair pin cotters (19).**

- J. Attach lift arm (5) to lift frame (23) using 5/8-11 x 3-1/4" bolt (11), flatwasher (17), and locknut (14). Mount Hydraulic unit to lift frame using 5/8-11 x 3-1/4" bolt (11), flatwasher (17) and locknut (14), and to lift arm (5) using 5/8-11 x 2-3/4" bolt (10), flatwasher (17), and locknut (14). **(SEE WARNING)**
- K. Install hydraulic system and snow plow lights per separate instructions.
- L. Pre-Assemble Moldboard Assembly, A-Frame (24), Sector, etc., per separate instructions.
- M. Connect the A-frame (24) to the clevis frame (1) using hinge pins (25) and Lynch pins (26).
- N. Hook the A-Frame chain to the Lift Arm (5) allowing sufficient slack to enable the Moldboard to follow ground contour while plowing.

**Note: When the lift frame module (23) is removed from the vehicle, the insides of the clevis frame (1) receiver tubes and outside ends of the lift frame should be coated with chassis grease/anti-seize lubricant and the protective receiver tube caps (2) installed over the clevis frame receiver tubes.**