

PARTS & INSTALLATION INSTRUCTIONS

MEYER SNOW PLOW MOUNTING for 1989 FORD RANGER and BRONCO II 4x4 MODELS

IMPORTANT NOTICE

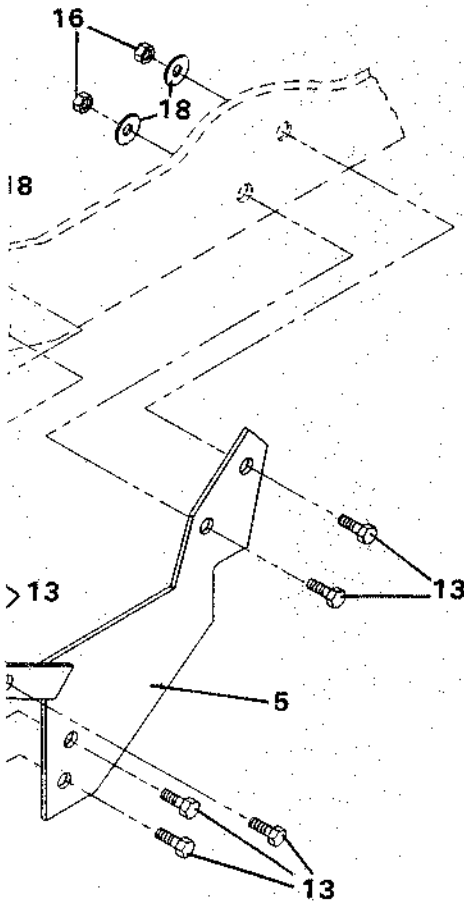
End user must be given this instruction sheet prior to delivery of this snow plow.

The equipment you have purchased should only be used on vehicles equipped with the manufacturer's snow plow preparation packages. Snow plowing without the original snow plow preparation package may damage your vehicle and the added weight of the equipment may impair the operation and control of the vehicle. Snow plowing with a vehicle that the manufacturer does not recommend for that purpose may void your new warranty. If your vehicle is not originally equipped with the snow plow preparation package, additional equipment may be necessary before snow plowing. Owners of these vehicles should consult their dealers before purchase or installation of such equipment.

CAUTION: The installation, on any vehicle, of these parts is not a full substitute for the original equipment snow plow preparation package.

WARNING: Lift arm extends beyond bumper of vehicle. To minimize damage from a front-end collision. Lift arm should be removed from vehicle when snow plow is not in use.

PARTS LIST



Item	Part No.	Quantity	Description
	18045	1	Mounting Carton
1	11215	1	• Lift Frame
2	10905	1	• Support Arm
3	10514	1	• Lift Arm
4	10866	1	• R.H. Side Plate Weldment
5	10867	1	• L.H. Side Plate Weldment
6	10716	1	• Light Bracket, R.H.
7	10715	1	• Light Bracket, L.H.
8	10820	1	• Clevis Frame
9	12984	1	• Pivot Bar
10	13594	1	• A-frame
11	12978	2	• Trip Spring
	08513	1	• Hardware Bag — Mounting
12	20066	6	•• Bolt H 3/8-16 x 1-1/4 Gr. 5
13	20139	14	•• Bolt H 5/8-11 x 1-1/2 Gr. 5
14	20144	1	•• Bolt H 5/8-11 x 2-3/4
15	20147	1	•• Bolt H 5/8-11 x 3-1/2
16	20309	16	•• Locknut 5/8-11
17	20327	6	•• Lockwasher 3/8
18	20357	8	•• Flatwasher 5/8
19	10538	2	•• Quick Disconnect Pin
20	21984	2	•• Hair Pin Cotter
	08511	1	• Snow Plow Hardware Bag
21	11006	2	•• Hinge Pin
22	21984	2	•• Hair Pin Cotter
23	12150	2	•• Eye Bolt
24	20309	5	•• Locknut 5/8-11
25	13598	2	•• Pivot Bolt
26	13591	1	•• King Bolt
27	20150	2	•• Bolt 5/8-11 x 4-1/2 Gr. 5
28	20318	4	•• Nut, Eslock, 5/8-11
	09916	1	• Snow Plow Marker Kit
29	08201	2	•• Snow Plow Marker Assy.
30	12816	2	•• Clamp
31	20005	2	•• Bolt H 1/4-20 x 1
32	20312	2	•• Locknut 1/4-20
33	20325	2	•• Lockwasher 1/4
34	09102	1	MOLDBOARD ASSY. TM-6.5
35	09100	1	• Cutting Edge, TM-6.5
36	21943	6	• Bolt C 1/2-13 x 1-3/4
37	20307	6	• Locknut 1/2-13

Parts indented are included in the carton, bag or assembly under which they are indented.

When ordering parts furnish Part No., Name and Description. Also furnish Vehicle Model and Year, Type of Hydraulic Unit and Moldboard Size.

Meyer Products reserves the right, under its continuing product improvement program, to change construction or design details, specifications and prices without notice or without incurring any obligation.

INSTALLATION INSTRUCTIONS

NOTE: Installation of this mounting requires cutting of front air dam to allow mounting clearance.

- A. Remove front bumper, with air dam attached. Keep stud plate attached to bumper. Remove bumper mounting plate from truck frame, it will not be used.
- B. Attach lift frame (1) to end of vehicle frame using 5/8 x 1-1/2 bolts (13), 5/8 flatwashers (18) and 5/8 locknuts (16) inserted in top two holes of lift frame (1) and into corresponding holes of vehicle frame.
- C. Place R.H. and L.H. side plates (4 & 5) against vehicle frame and attach using 5/8 x 1-1/2 bolts (13), 5/8 flatwashers (18) and 5/8 locknuts (16).
- D. Fasten side plates (4 & 5) to bottom hole in lift frame (1) using 5/8 x 1-1/2 bolt (13) and 5/8 locknut (16).
- E. Hold clevis frame (8) between the two side plates (4 & 5) and insert 5/8 x 1-1/2 bolt (13) through holes in underframe (4 & 5) and clevis frame (8). Secure with 5/8 locknut (16).
- F. Pull forward on lift frame (1) while pushing back on clevis frame (8) to remove slack in bolt holes. Tighten all nuts to proper torque as shown in torque chart.
- G. Attach light brackets (6 & 7) to weld nuts in lift frame (1) using 3/8" x 1-1/4" bolts (12) and 3/8" lockwashers (17). Install headlights per separate instructions. Be certain that back of headlights do not interfere with opening and closing of vehicle hood.
- H. Install Electro-Touch wiring system per separate instructions.
- I. Re-Install bumper using the original nuts and studs. **IMPORTANT:** Cut notch in front air dam so it will fit around support arm socket on lift frame.
- J. Attach Electro-Touch unit to support arm (2) using 5/8" x 3-1/2" bolt (15) and 5/8" locknut (16) and to lift arm (3) using 5/8" x 2-3/4" bolt (14) and 5/8" locknut (16). Secure this assembly to lift frame (1) using quick-disconnect pins (19) and hair pin cotters (20).

TORQUE CHART FOOT LBS.

Bolt-Nut Size	GR. 2	GR. 5 or 8.8 Metric	GR. 8
	1/4 - 20	4 - 6	
5/16 - 18	9 - 11		
3/8 - 16	17 - 20	26 - 29	60 - 66
7/16 - 14		42 - 48	90 - 100
1/2 - 13		64 - 72	179 - 198
5/8 - 11		127 - 141	
3/4 - 10		227 - 251	

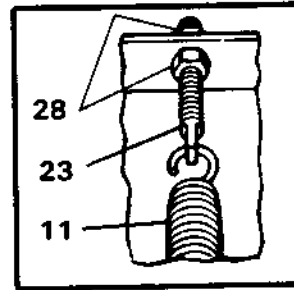
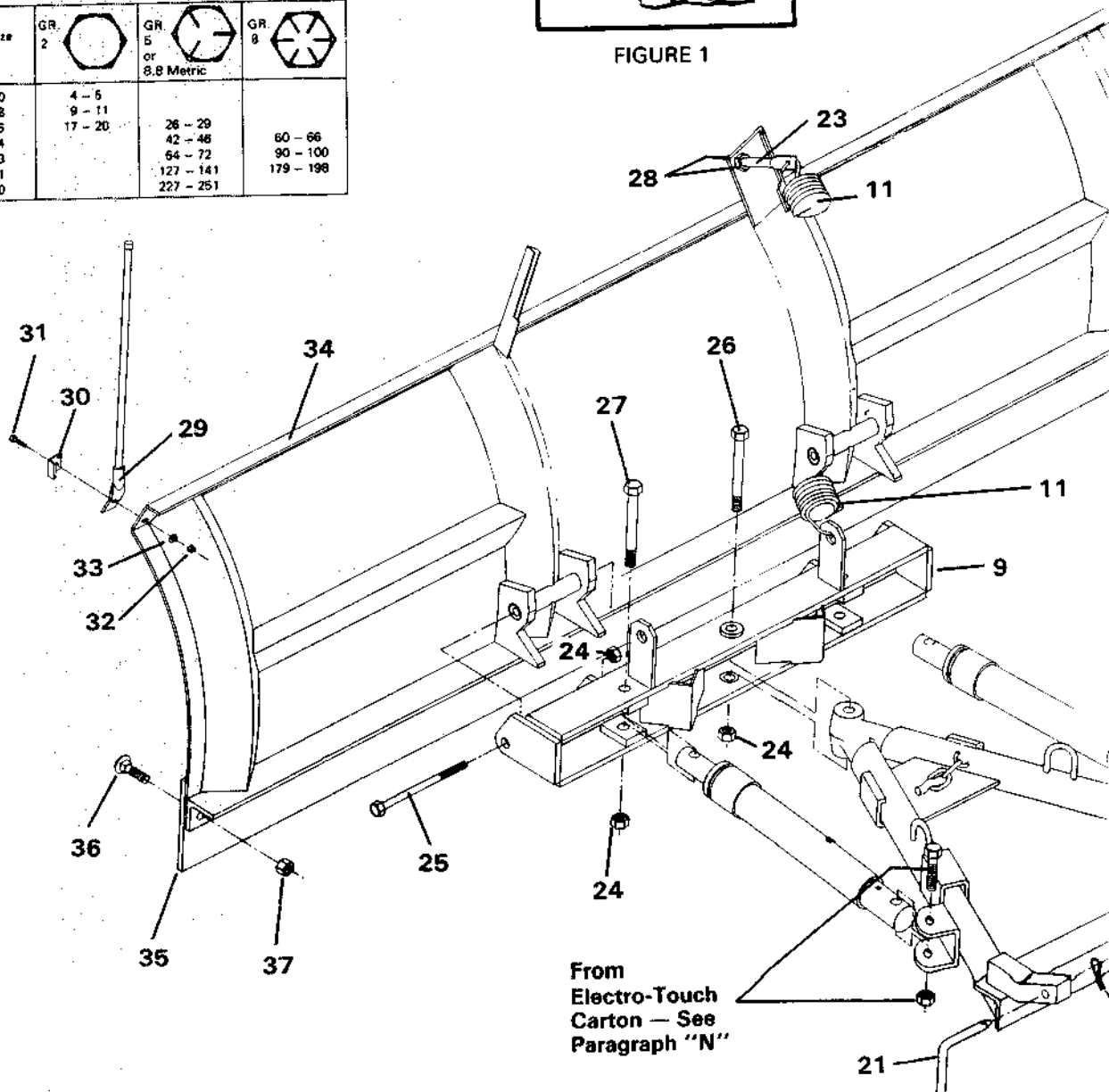


FIGURE 1



- K. Attach pivot bar (9) to moldboard (34) using pivot bolts (25) coated with chassis lubricant, and 5/8" locknut (24).
- L. Attach trip springs (11) to pivot bar (9) and moldboard (34) with eye bolts (23) and locknuts (28). Flat end of eye bolt (23) must be in a vertical position, as shown in figure 1, to hinge properly when moldboard (34) trips. Proper tension is attained when trip spring (11) coils begin to separate and then tightening top locknut (28) four additional turns. Tighten bottom locknut (28). Refer to figure 1.
- M. Assemble A-frame (10) to pivot bar (9) using king bolt (26) and 5/8" locknut (24). Grease king bolt (26) prior to installation.
- N. Install fitting end of power angling rams to A-frame (10) using 5/8" x 3-1/4" bolt and 5/8" locknut. (Packed in hardware bag 08363 in Electro-Touch carton). Attach piston end of ram to pivot bar (9) with 5/8" x 4-1/2" bolt (27) and 5/8" locknut (24).
- O. Straighten end of plow markers (29) so they will be vertical after installation. Attach using 1/4" x 1" bolt (31), clamp (30), 1/4" locknut (32) and lockwasher (33).

- P. Secure the moldboard-pivot bar-A-frame assembly to vehicle at clevis frame (8) using hinge pins (21) and hair pin cotters (22). Attach lift arm (3) allowing sufficient slack to allow moldboard to follow ground contours.

GENERAL INFORMATION

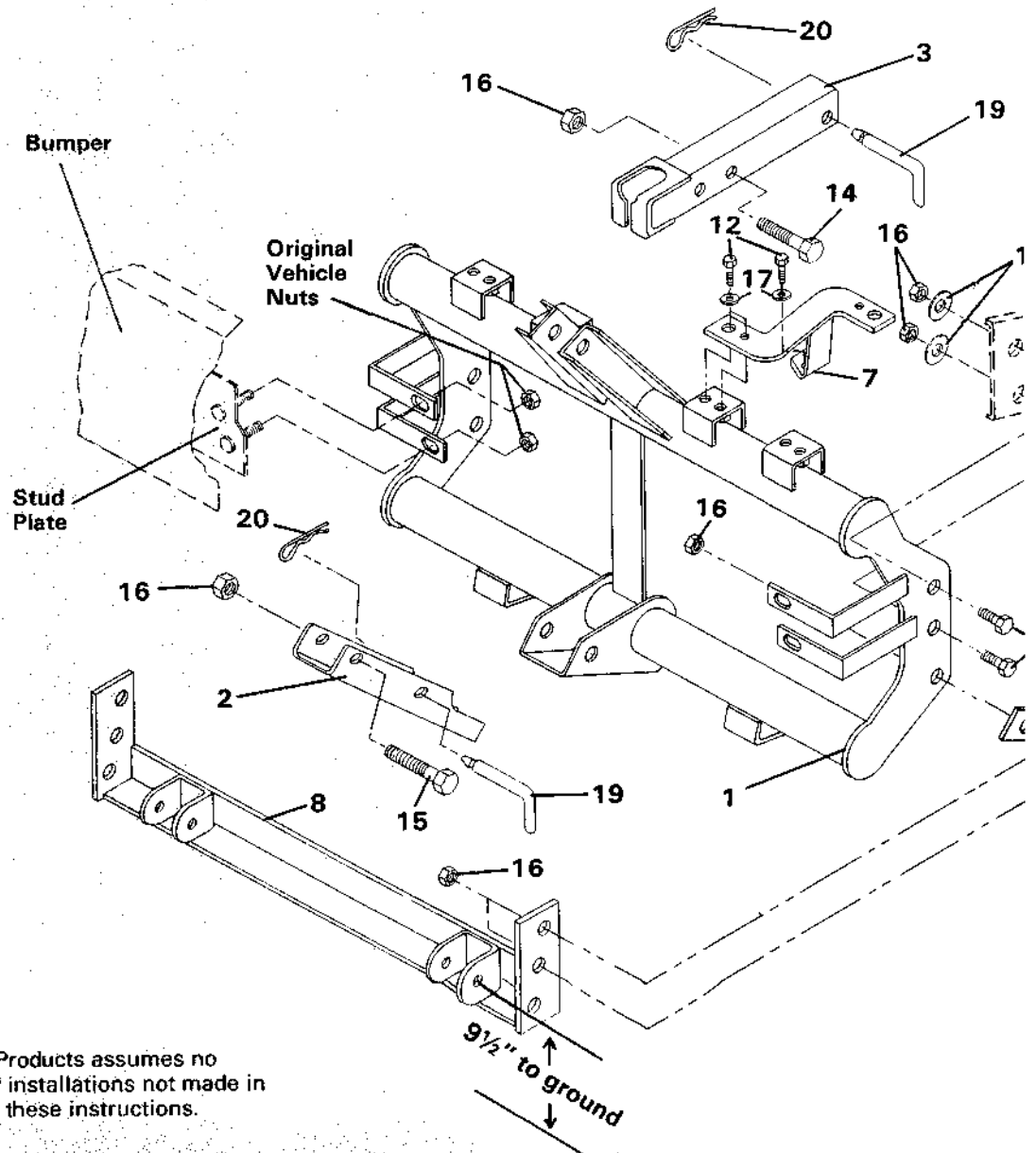
CAUTION: Always disconnect battery before beginning installation.

DO NOT burn holes or weld vehicle frame. This may cause frame failure.

After first use retighten all mounting bolt connections to the specified torque. All mounting bolt connections to be checked periodically for tightness. Check contents against the parts list to determine all are correct and included; and also to familiarize yourself with them.

Locknuts are furnished. **DO NOT** tighten bolts and nuts until installation is complete (unless otherwise specified) then be sure to tighten all attaching parts per specified torque chart.

It is important that the Meyer harness, all wires from the Meyer light switch, and all other electrical wires be routed around hot or moving engine parts, and any sharp sheet metal. Protection must be provided to guard against wire damage at these points. All excess or loose wire must be neatly secured using wire ties.



NOTICE: Meyer Products assumes no responsibility for installations not made in accordance with these instructions.