

Assembly Instructions

Standard Operating System with Hands Free Plowing
E73 12V Hydraulic Unit

Includes
Black Iron: 41090
Moldboard: 79499K



NOTICE: Meyer Products LLC reserves the right, under its continuing product improvement program, to change construction, design, details, specifications, and prices without notice or without incurring any obligation. Meyer Products LLC assumes no responsibility for installations not made in accordance with these instructions.

Table of Contents

General Information 1

Black Iron Parts Lists 2-3

Moldboard Parts List 4

Standard Operating System Wiring 5

Plow Assembly & Adjustments 6-7

E73 Hydraulics 8

Mounting Plow 9

Dismounting Plow 10

Pre-Delivery Inspection 11

Registration 11

Please visit our website to find our most updated technical information; including installation instructions, user manuals, parts diagrams, EZ Troubleshooter, and more.

Please see your owner’s manual for Pre-Season, Post-Season, and General Maintenance.

www.meyerproducts.com



CAUTION GENERAL INFORMATION

- Always disconnect battery prior to installation.
- SAFETY PRECAUTIONS should be used when Quik Lift® is in a RAISED position.
- LOWER plow to the ground when vehicle is PARKED.
- OVERHAUL and SERVICE information is covered on separate instructions.

- WARNING** Lift arm should be removed from vehicle if / when snowplow is removed.
- Note:
1. Connect ground cable to negative side of battery for a solid connection to ground.
 2. **CAUTION** Route all cables away from moving engine parts, Manifolds, and sharp sheet metal.
 3. For weather protection, coat all connections with Meyer Dielectric Grease Part No. 15632
 4. The vehicle must be equipped with a “Heavy Duty Battery” (70 Amp, Hr. Min.), 550 C.C.A. and “Alternator” (60 Amp. Min.) to obtain maximum performance.
 5. Follow these instructions explicitly. Warranty does not apply to a Meyer product which has been negligently or improperly assembled or installed.

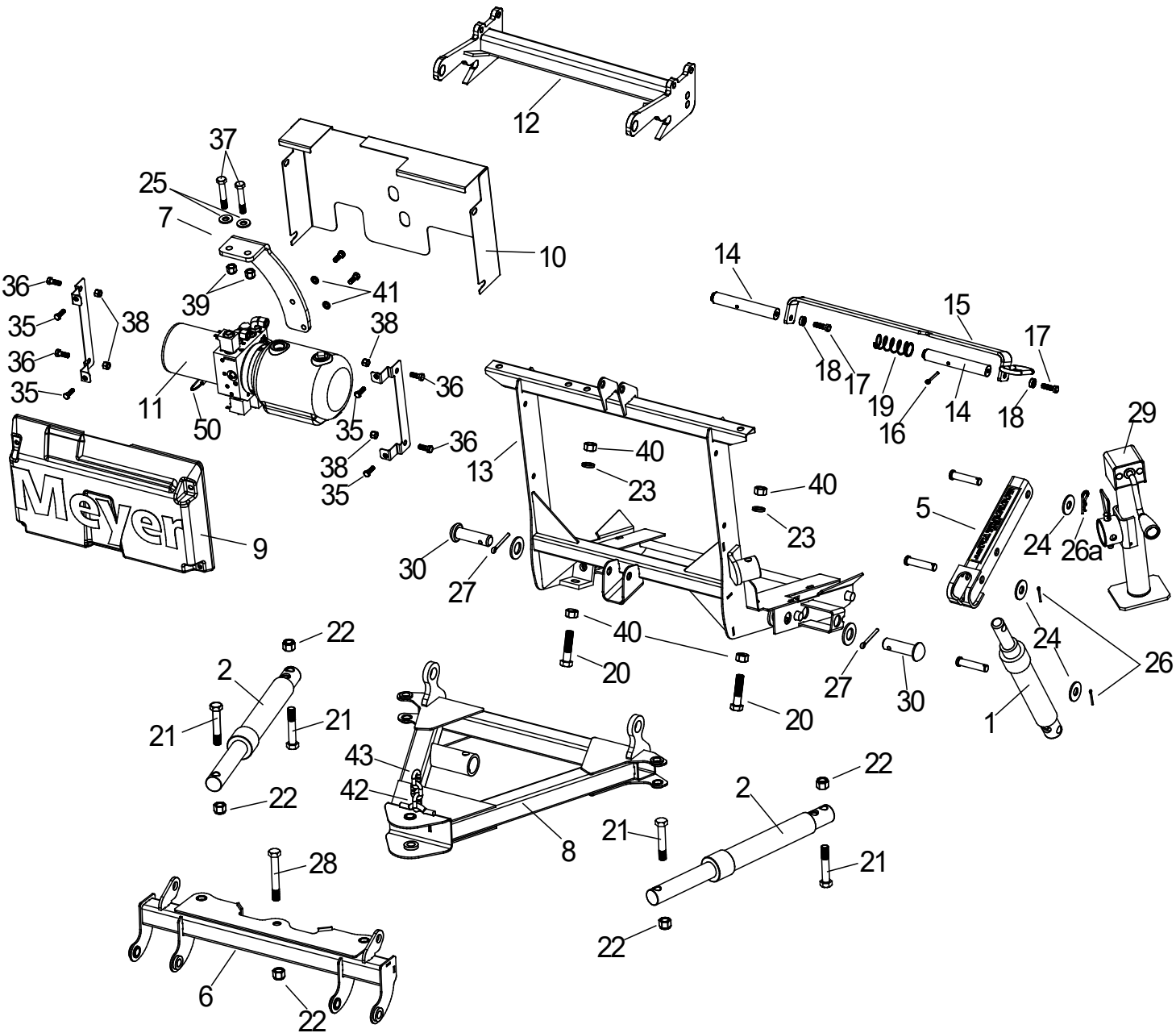
Tool List for Plow Assembly

Pliers	9/16" socket
1/2" socket	3/4" box wrench
1/2" box wrench	15/16" box wrench
9/16" box wrench	15/16" deep well socket

TORQUE CHART FOOT

Bolt Nut Size	Gr. 2	Gr. 5	Gr. 8
1/4-20	4-5		
5/16-18	9-11		
3/8-16	17-20	26-29	
7/16-14		42-46	60-66
1/2-13		64-72	99-100
5/8-11		127-141	179-198

41090
Specific Components



Black Iron Parts List

Item	Part #	QTY	Description
	41090	1	DP5.0- 7.5 E-73 DP Mount Assy.
	N/A	1	DP6.8-7.5 E-73 DP Mount Assy.
1	05888	1	• Lift Ram 1-1/2 x 8"
	07772	1	• LH Ram with Hose & Fittings
2	05887	1	• Ram (1-1/2" x 10")
3	22866	1	• SAE 6 x 90 Degree Elbow
4	22885	1	• Hose Assy 1/4 x 54" M-6
	07783	1	• RH Ram with Hose & Fittings
2	05887	1	• Ram (1-1/2" x 10")
3	22866	1	• SAE 6 x 90 Degree Elbow
4	22921	1	• Hose Assy 1/4 x 38" M-6
5	10514	1	• Lift Arm
6	14250	1	• Pivot Bar Drive Pro 6.8
7	14185	1	• E-73 DP Mounting Bracket
8	14232	1	• A-Frame Drive Pro
9	14289	1	• E-73 Lift Unit Cover Front
9a	14288	1	• E-73 Lift Unit Cover Rear
10	14290	2	• Lift Unit Cover Bracket
11	16027	1	• E-73 Lift Ass'y. (Unit only)
12	19836	1	• Clevis Drive Pro
	18944	1	• Lift Frame Assy DP
13	18919	1	• Lift Frame
14	19775	2	• Pin
15	18938	1	• Pull Pin
16	20406	1	• Cotter Pin 3/16 x 1-1/2"
17	22010	2	• Bolt H 3/8-16 x 1-1/4"
18	22260	2	• Poly Washer 3/8"
19	814000005	1	• Spring
20	20144	2	• Bolt H 5/8 - 11 x 2-3/4" Gr. 5
21	20147	4	• Bolt H 5/8 - 11 x 3-1/2" Gr. 5
22	20309	5	• Locknut 5/8 - 11
23	20331	2	• Lockwasher 5/8
24	20357	3	• Flatwasher 5/8"
25	20355	2	• Flatwasher 1/2"
26	20385	3	• Cotter Pin 1/8 x 1-1/4"
26a	22845	1	• Hair Pin
27	20420	2	• Cotter Pin 1/4 x 2"
28	22000	1	• Bolt H 5/8-11 x 4-1/2" Gr. 8
29	22022	1	• Crankstand
30	22436	2	• Pin 1 x 3"
31	23039	1	• Plow Side Harness
32	22719	3	• Pivot Pin 5/8 x 3"
33	22866	1	• SAE Mx3/8 90 Degree Elbow
34	22884	1	• Hose 1/4 x 33"
35	20027	4	• Bolt H 5/16-18 x 1" Gr. 2
36	20049	4	• Bolt H 3/8-16 x 1 Gr. 2
37	20100	2	• Bolt H 1/2-13 x 2-3/4" Gr. 5
38	20305	4	• Locknut 3/8-16

Item	Part #	QTY	Description
39	20307	2	• Locknut 1/2-13
40	20530	4	• 5/8-11 Finish Nut
41	22379	4	• Lockwasher 3/8
42	20800	1	• Quick Link 5/16"
43	21543	1	• Chain 5/16" x 29"
	41092	1	• Accessory Box
44	23025	1	• Power Cable - 36"
45	12978	2	• Trip Spring
	07810	1	• Nite Saber III Kit
	09917	1	• Plow Marker Kit
46	8214	2	• Plow Marker
47	20027	4	• Bolt H 5/16-18 x 1 Gr. 2
48	20304	4	• Locknut 5/16-18
49	20352	8	• Flatwasher 5/16"
50	15372	1	• Starter Solenoid - 12 volt
51	21832	1	• Split Bushing
52	N/A	N/A	N/A
53	N/A	N/A	N/A
54	23047	1	• Controller
55	23059	1	• Truck Side Harness (4 Pin)*
	23058	1	• Truck Side Harness (7 Pin)*
	41102	1	• Hardware Bag
56	09124	2	• Eye Bolt
57	20357	2	• Flatwasher 5/8"
58	20385	2	• Cotter Pin 1/8 x 1-1/4"
59	22720	2	• Pivot Pin 5/8 x 7
60	15187	1	• Breather
**	23057	1	• Trailer Adapter Harness**

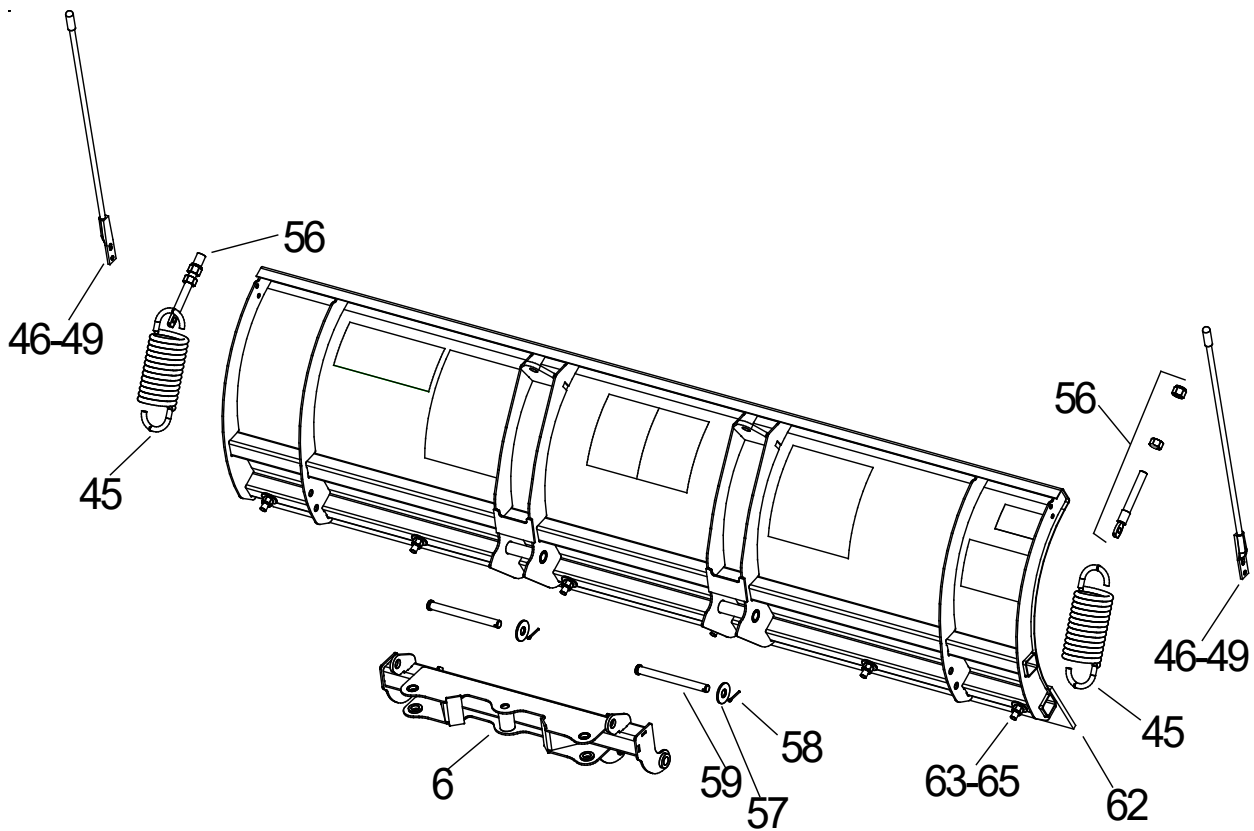
*NotethattheTruckSideWiringHarness(55)haschangedfroma7pinto4pinasofOctober 2017. Please use the applicable part number as needed.

**NotethattheTrailerAdapterHarness23057isusedformostvehiclesandisincludedwiththe black iron kit.

See Service Bulletin SB 259 for more information.

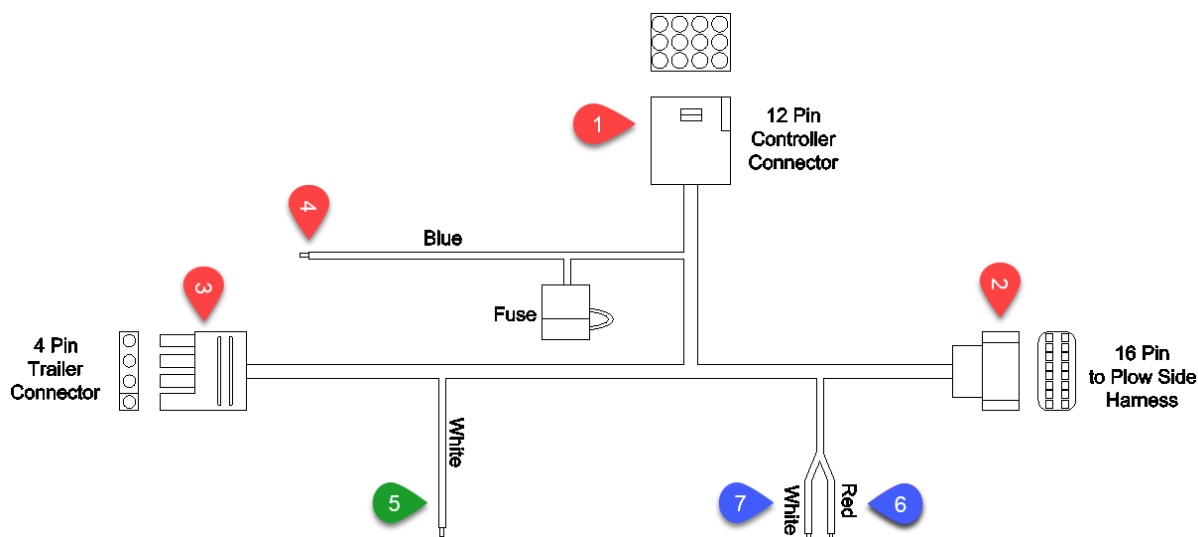
Parts indented are included in the carton, bag or assembly under which they are indented.

Moldboard Parts List



Item	DP 6' 8"	QTY	Description
	79499K	1	Moldboard Kit
	79499	1	• Drive Pro™ Moldboard Assembly
62	09796	1	•• Cutting Edge
63	22067	8	•• Bolt 1/2-13 x 3-1/4" Gr. 5
64	N/A	6	•• Bolt 1/2-13 x 3-1/4" Gr. 5
65	20307	8	•• Locknut 1/2-13
	08092	2	•• Shoes
	08107J	1	• Deflector

Wiring Harnesses & Controller



Vehicle Side Harness

- 1) Route the 12 pin connector into vehicle's cab and plug into controller.
- 2) Route the 16 pin connector to the front of the vehicle and plug into the plow side harness.
- 3) Route the 4 pin connector to rear of vehicle and plug into vehicle's trailer harness using the trailer adapter harness (50). Use cable ties to ensure the harness is secured to the vehicle's frame.



Trailer Adapter Harness

- 4) The BLUE wire will connect to the vehicle's keyed accessory circuit. This is to ensure the plow turns on and off with the vehicle's ignition.

The following step is for 2015 & later GM vehicles with an alternator relay...

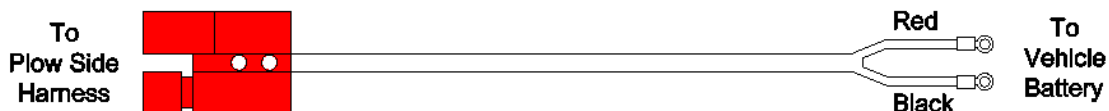
- 5) The WHITE wire will connect to 2015 & Later GM vehicles with alternator relay. See Meyer Products Service Bulletin SB252.

The following two steps are optional and may be enforced by local law which requires your vehicle lights to be off while your plow lights are on and vice versa...

- 6) Connect the RED to the HIGH beam function.
- 7) Connect the WHITE to the LOW beam function.

Power Harness

- 1) Route through the vehicle's grille.
- 2) Connect the terminals to the vehicle's battery. Red to Positive and Black to Negative.

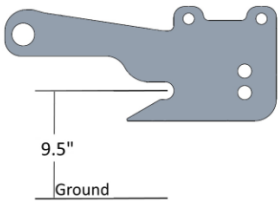


Plow Assembly & Adjustments

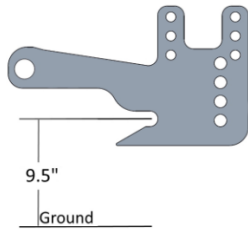
Clevis Height

Clevis height for the 19836 (41090) and 19943 (41190) clevis should be 9.5" to the ground.

19836 Clevis

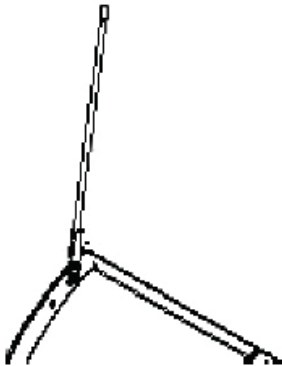


19943 Clevis



Plow Markers

Attach Plow Markers (21) to moldboard using 5/16-18 x 1" Bolt (22), 5/16" Flatwasher (24) and 5/16-18 Locknut (23).



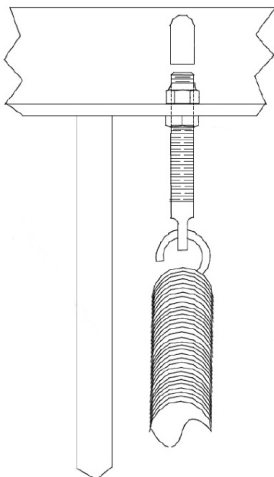
Trip Spring Adjustment

Attach Eye Bolts to Moldboard and Trip Springs to Pivot Bar, making certain locknuts are positioned as shown below.

Make certain each Eye Bolt is in a vertical position as shown below so that the Eye Bolt and Trip Spring hinge properly when the Moldboard trips.

Note: Proper tension is attained when the Trip Spring coils just begin to separate and then tightening top locknut four additional turns. Tighten bottom locknut to secure Eye Bolt in position.

Install Eye Bolt Caps over exposed threads.



Nite Saber LED Lights

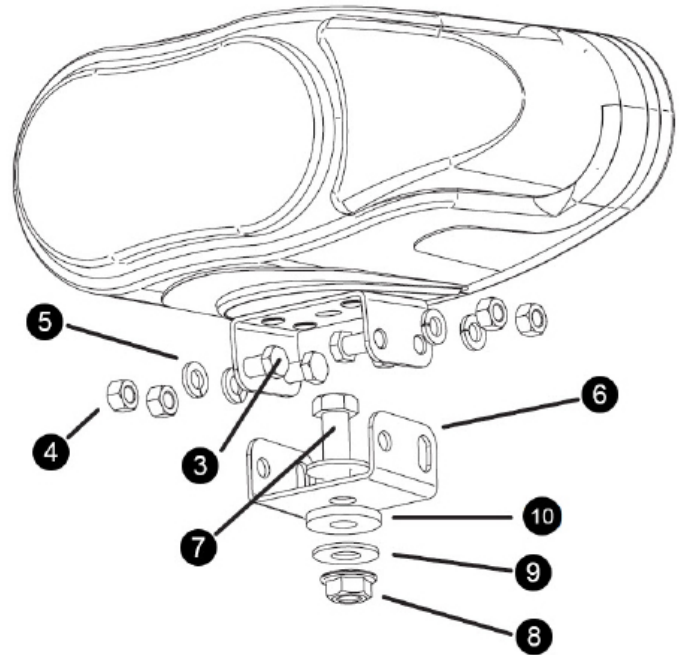
See separate Nite Saber LED instructions for further information.

Mount the lights as shown below.

Connect both male ends from the snow plow light to the female ends on the Plow Side Harness. Ensure all wiring harnesses are secured against the lift frame.

Check snow plow lights and blinkers to ensure proper operation. If operating in reverse (i.e. driver side blinking instead of passenger side), reverse the harness connections.

Note: All electrical connections should have both ends coated with a dielectric grease (Meyer Part # 15632) prior to final installation. This will ensure a good connection and help in preventing corrosion.



Nite Saber LED Parts List

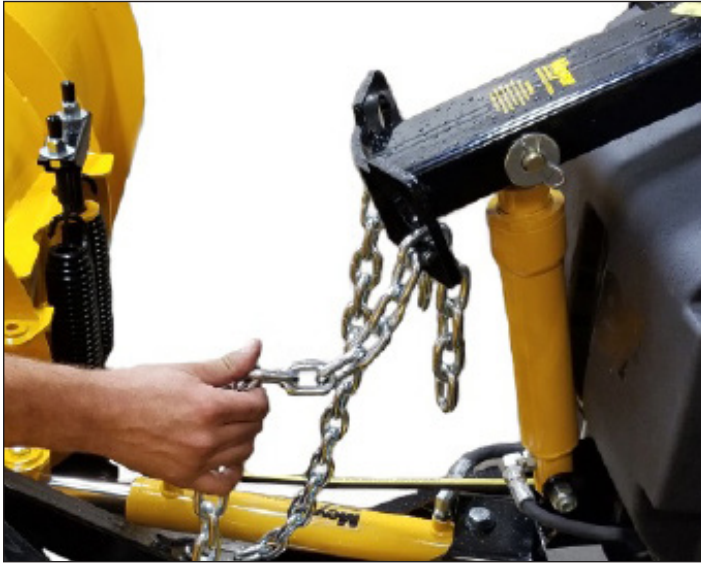
Item	Part	QTY	Description
1	23067	1	Nite Saber LED Kit
-	23066	1	• Passenger Side LED
-	23065	1	• Driver Side LED
2	08126	1	• Hardware Bag
3	-----	8	• Hex Bolt 3/8" x 3/4", SS
4	-----	8	• Hex Nut 3/8", SS
5	-----	8	• Lock Washer 3/8", SS
6	-----	2	• Metal Bracket, Bottom
7	-----	2	• Bolt 1/2" - 13 x 1 1/12", SS
8	-----	2	• Hex Lock Nut 1/2" - 13, SS
9	-----	4	• Flat Washer 1/2", SS
10	-----	2	• Neoprene Grommet 1/2"

Parts indented are included in the carton, bag, or assembly under which they are indented.

Plow Assembly & Adjustments

Lift Chains

Attach the Lift Chain to the Lift Arm through the two hooks on the lift arm. Adjust the lift chain at the lift arm so that there are 2-3 links of slack. This ensures that the plow blade will lift fully and be able to follow the ground contour while plowing.



Hydraulic Fluid Level

Top off the unit to the fill line on the reservoir with Meyer M-1 Hydraulic Fluid.

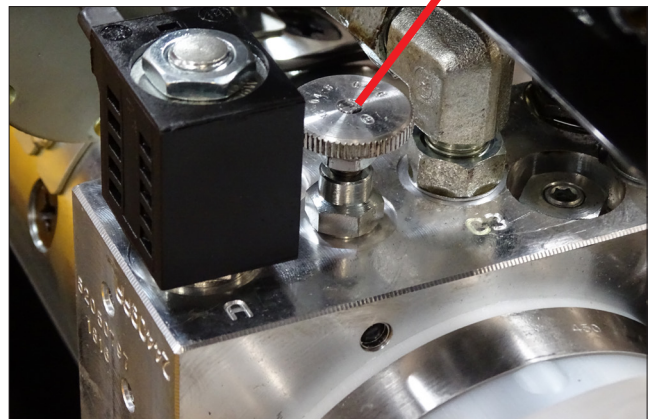
NOTE: Proper fluid level is to the fill line on the reservoir. It must be checked with the lift cylinder fully retracted.

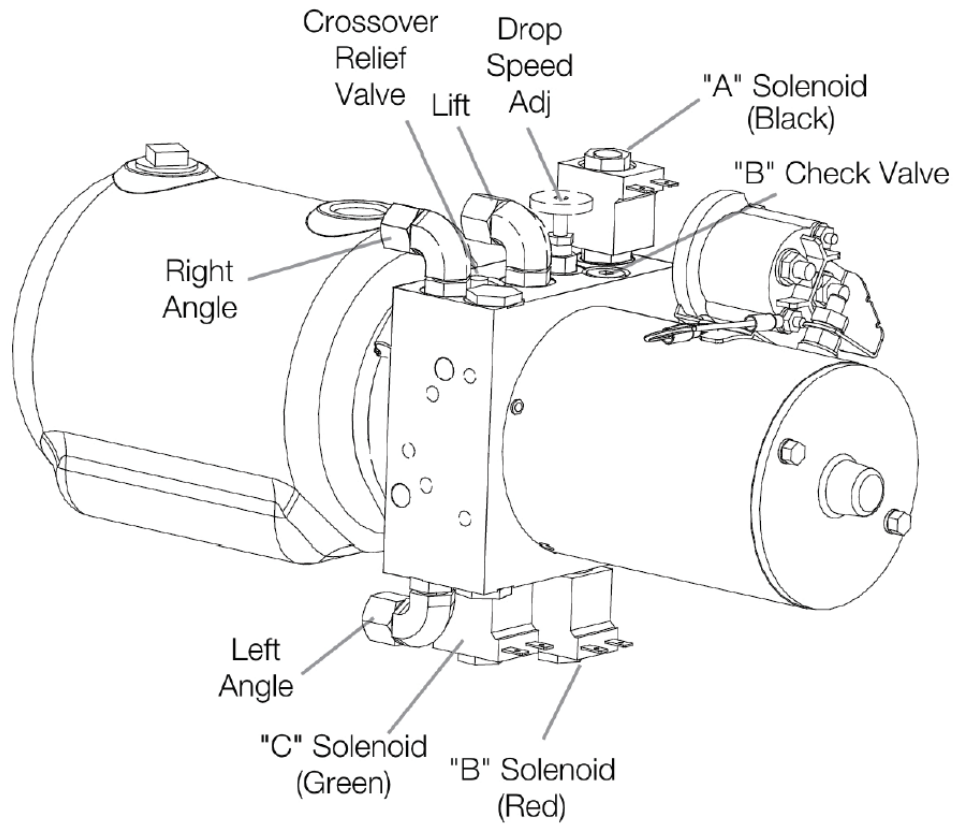


Drop Speed Adjustment

Drop Speed Adjustment: Loosen jam nut and turn knob clockwise to slow the drop of the plow and counter clockwise to speed the drop of the plow. Tighten jam nut.

Drop Speed Adjustment





E-73	Raise	Lower	Angle Right	Angle Left
Motor	X		X	X
A Valve		X		
B Valve	X			
C Valve			X	

Mounting Plow

NOTE: Pictures may vary based on model



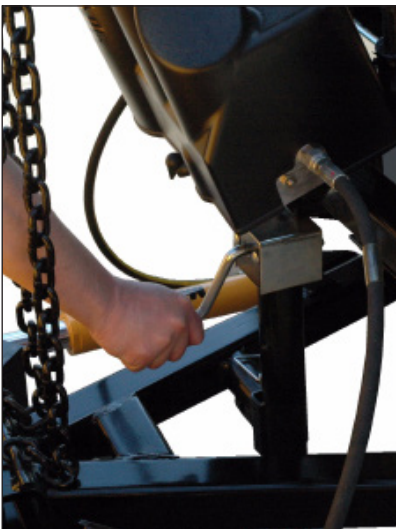
A. Pull vehicle into plow assembly and push plow assembly forward an inch or two.



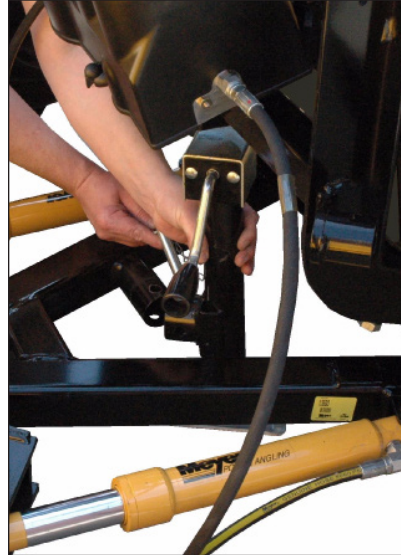
B. Twist handles on both sides to engage spring loaded pins.



C. Push back on lift frame until both pins spring through mount on vehicle.



D. Adjust crankstand until it is no longer in contact with the ground.



E. Remove crankstand from a-frame.



F. Attach crankstand to lift frame.

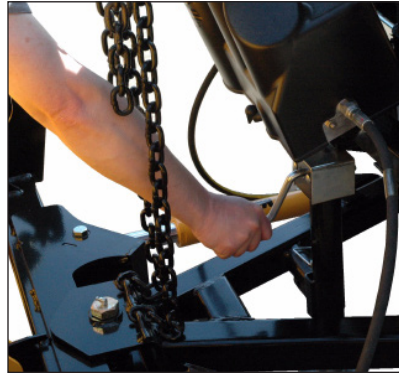


G. Remove weather cover on both ends and connect both electrical plugs.

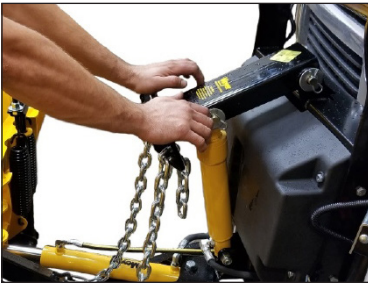
Dismounting Plow



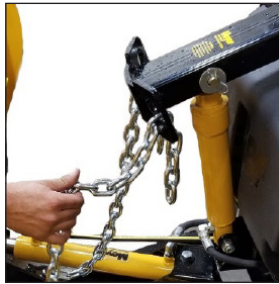
A. Press down button until float light turns blue.



E. Adjust crankstand until the crankstand comes in contact with the ground and then turn 1 to 2 revolutions.



B. Push lift arm down until there is slack in the chain.



C. Remove crankstand from lift frame.



D. Attach crankstand to a-frame



F. While slightly pushing the lift frame towards vehicle pull handles on either side to disengage pins then twist until the leg locks the pin in the open position.



G. Disconnect both electrical plugs and install weather cover on both ends.



H. Back vehicle away from plow assembly.

PRE-DELIVERY INSPECTION

Vehicle Make: _____

Vehicle Model: _____

Vehicle Year: _____

Vehicle VIN#: _____

Vehicle FGAWR: _____

Installing Company: _____

Hydraulic Serial Number: _____

Moldboard Serial Number: _____

- | | |
|---|---|
| <input type="checkbox"/> All bolts torqued to specification | <input type="checkbox"/> Plow Operation Up |
| <input type="checkbox"/> Suspension interference | <input type="checkbox"/> Plow Operation Left |
| <input type="checkbox"/> Clevis height in inches _____ | <input type="checkbox"/> Plow Operation Right |
| <input type="checkbox"/> Trip springs adjusted | <input type="checkbox"/> Plow Operation Down |
| <input type="checkbox"/> Lift Chain Adjusted | <input type="checkbox"/> Plow Light Blinker Left & Right Operation |
| <input type="checkbox"/> Check for hydraulic fluid leaks | <input type="checkbox"/> Plow Light Low & High Beam Operation |
| <input type="checkbox"/> Hydraulic fluid Level | <input type="checkbox"/> Plow Lights Adjusted |
| <input type="checkbox"/> Dielectric grease applied to ALL electrical connection | <input type="checkbox"/> Plow Mount/Dismount reviewed with Customer |
| <input type="checkbox"/> All wires secured | <input type="checkbox"/> Plow Operation reviewed with Customer |
| <input type="checkbox"/> Plow Stops Adjusted (plow cannot bump hyd. unit) | <input type="checkbox"/> Warranty/Registration/Owners Manual |
| <input type="checkbox"/> Controller Operation | <input type="checkbox"/> Reviewed with Customer |

Notes:

Inspected By: _____ W.O.#: _____ Date: _____

Customer Signature: _____

Serial Number Decal Locations

Moldboard serial tags are attached to the back of the moldboard, the outer rib of the moldboard, and on the black iron near the hydraulic unit.

Note: SV3 Plows use the same serial number for both hydraulic and moldboard.



Registration

You must register your plow online to be eligible for the 5 year warranty. Please visit...

www.meyerproducts.com/product-registration

Please note your registration ID for future reference.

Registration ID _____