



PARTS & INSTALLATION INSTRUCTIONS

MDII™ and EZ MOUNT PLUS™

SNOW PLOW MOUNTING 17190

2016 & Later FORD F650 and F750

4x4 MODELS

End user must be given this instruction sheet prior to delivery of this Snow Plow.

SAFETY DEFINITIONS

	This is the safety alert symbol. It is used to alert you to potential personal injury hazards. Obey all safety messages that follow this symbol to avoid possible injury or death.
	DANGER Indicates an imminently hazardous situation which, if not avoided, will result in death or serious injury.
	WARNING Indicates a potentially hazardous situation which, if not avoided, could result in death or serious injury.
	CAUTION Indicates an potentially hazardous situation which, if not avoided, may result in minor or moderate injury.
	CAUTION used without the safety alert symbol indicates a potentially hazardous situation which, if not avoided, will result in property damage.

IMPORTANT NOTICE

In conjunction with FMVSS (Federal Motor Vehicle Safety Standards) and OEM (Original Equipment Manufacturer) guidelines, Meyer Products has designed this plow package with the following guidelines:

	Installation of a snowplow may effect your new vehicle warranty. For more information consult your Vehicle Owner's Manual / Vehicle Dealer.
	The vehicle must not be operated when overloaded. In all cases, the loaded vehicle weight, including the entire snowplow system, all aftermarket accessories, driver, passenger, options, nominal fluid levels, and cargo must not exceed the front/rear Gross Axle Weight Rating (GAWR), and total Gross Vehicle Weight Rating (GVWR). These weights ratings are specified on the safety compliance certification label on the driver's side door opening. The use of rear ballast weight may be required to prevent exceeding the front GAWR.

According to the NHTSA (National Highway Traffic Safety Administration) new and untitled vehicles need to be verified by the installer that snowplow and ballast (if needed) do not exceed the front/rear GAWR and total GVWR.

	Read the Meyer Owner's Manual before operating or servicing a snowplow. FOLLOW THESE INSTRUCTIONS EXPLICITLY.
--	---

GENERAL INFORMATION

	SAFETY PRECAUTIONS should be used when Hydraulic Unit is in OPERATION and plow is in a RAISED position. Lower plow to ground when vehicle is PARKED in case of hydraulic failure.
--	---

Check contents against the parts list to determine all are correct and included, and also to familiarize yourself with them.

	Warranty does not apply to a Meyer or Diamond product which has been negligently or improperly assembled or installed.
--	--

	CAUTION: To avoid harm to vehicles electrical system always disconnect battery before beginning installation. DO NOT BURN holes or WELD vehicle frame. This may cause frame failure.
--	--

OVERHAUL and SERVICE INFORMATION are covered on separate instructions.

Meyer Products LLC reserves the right, under its continuing product improvement program, to change construction or design details, specifications and prices without notice or without incurring any obligation.

Meyer Products LLC
18513 Euclid Ave. • Cleveland, Ohio 44112-1084
Phone 486-1313 (Area Code 216)
www.meyerproducts.com • email info@meyerproducts.com



Meyer Products LLC
6 Angell Lane • Damariscotta, ME 04543-4507
Phone 563-2227 (Area Code 207)
www.meyerproducts.com • email info@meyerproducts.com

PARTS LIST

ITEM	PART NO.	QTY.	DESCRIPTION
	17190	1	MTG FORD F650-750 16&UP PLUS
1	19244	1	• SIDE MOUNT 17190 DS
2	19245	1	• SIDE MOUNT 17190 PS
3	19995	2	• SPACER PLATE 17168
4	19623	1	• SIDE PLATE ANCHOR LH
5	19622	1	• SIDE PLATE ANCHOR RH
6	19246	2	• ANGLE 17190
7	19247	1	• REAR BRACE ASSY 17190
8	19820	2	• SUPPORT END PLT
9	19804	2	• PLATE
10	19806	1	• TUBE
11	19248	2	• ANGLE 19247
12	08991	1	• HDWE BAG 17190
13	20097	8	•• BOLT H 1/2-13 X 2 G5 ZN
14	20096	8	•• BOLT H 1/2-13 X 1-3/4 G5 ZN
15	20307	16	•• LOCKNUT ESNA 1/2-13
16	20141	2	•• BOLT H 5/8-11 X 2 G5 ZN
17	20309	2	•• LOCKNUT ESNA 5/8-11
18	20166	12	•• BOLT H 3/4-10 X 2-1/2 G5 ZN
19	20310	12	•• LOCKNUT ESNA 3/4-10

CAUTION

CAUTION: To avoid harm to vehicles electrical system always disconnect battery before beginning installation.

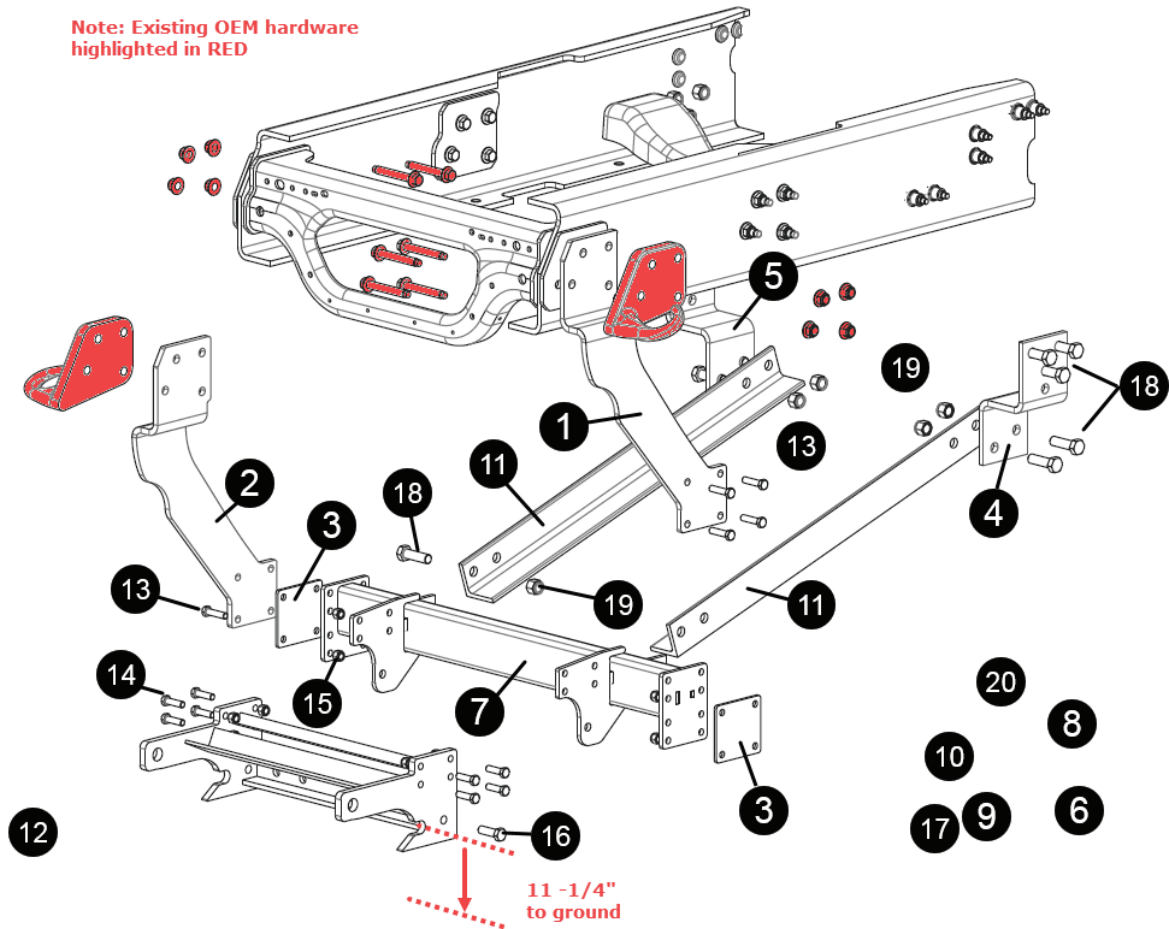
DO NOT BURN holes or WELD vehicle frame. This may cause frame failure.

IMPORTANT
After first use, retighten all mounting bolt connections to specified torque. All mounting bolt connections to be checked periodically for tightness.

Locknuts are furnished DO NOT tighten bolts and nuts until installation is complete (unless otherwise specified), then be sure to tighten all attaching parts per specified torque chart.

NOTE: THIS MOUNTING CARTON CAN BE USED WITH THE MDII OR EZ MOUNT PLUS CLF

Parts indented are included in the carton, bag or assembly under which they are indented.



VEHICLE RECOMMENDATIONS

⚠WARNING

- A ballast weight may be required to prevent front GAWR overloading. If required, ballast must be securely attached at least 18 inches behind the rear axle.
- Front end wheel alignment and headlight aim may require readjustment after installation of equipment, and is the responsibility of the equipment installer. Failure to adjust front wheel alignment may cause premature uneven tire wear. If required, reset to chassis manufacture's specifications found in the Ford Shop Manual.
- Rear ballast is determined by weighing a vehicle's front and rear axles and adding weight behind the rear axle until front axle weight is under or equal to the vehicle specific front GAWR while not exceeding the rear GAWR and GVWR.
- Vehicle option packages may vary. If in doubt, it is always a good idea to weigh the vehicle to ensure all weight ratings are not exceeded with plow in the raised position.

INSTALLATION INSTRUCTIONS

- A. Remove bumper & tow hooks. Retain all hardware as it will be reused.
- B. On driver's side, install Side Mount DS (#1) onto existing bolts for tow hook. Assemble tow hook to bolts as well. Secure with vehicle hex nuts removed in No. 1 above.
- C. On passenger's side, install Side Mount PS (#2) per procedure described in No. 2 above.
- D. Install Rear Brace Assembly (#7) between both side mounts, using (1) spacer plate (#3), (4) 1/2-13 x 2" hex bolts (#) and (4) 1/2-13 Locknuts (#) per side.
- E. On driver's side, attach Angle (#) to mount location on back of Rear Brace Assembly (#). Loosely secure with (1) 3/4-10-2-1/2" hex bolt (#) and (1) 3/4-10 Locknut. Connection will be secured after steps 6 and 7 are completed.
- F. On opposite end of Angle (#6) installed in No. 5 above, attach Side Plate Anchor LH (#4) with (2) 3/4-10 x 2-1/2" hex bolts (#) and (2) 3/4-10 Locknuts. Hex nuts should be snugged up tight.
- G. Rotate assembly in No. 6 above up to bottom of frame. With this assembly up against bottom of frame, mark (3) locations to drill and attach to frame. Drill (3) 7/8" holes at marked locations through frame. Secure assembly to frame with (3) 3/4-10 x 2-1/2" hex bolts (#) and (3) 3/4-10 Locknuts (#).
- H. Follow same procedure set out in No. 5, 6, and 7 above for passenger side. The parts used will be Angle (#6), Side Plate Anchor RH (#5), and hardware.
- I. Snug all bolts to proper torque specified.
- J. Re-install bumper with hardware retained from removal process.