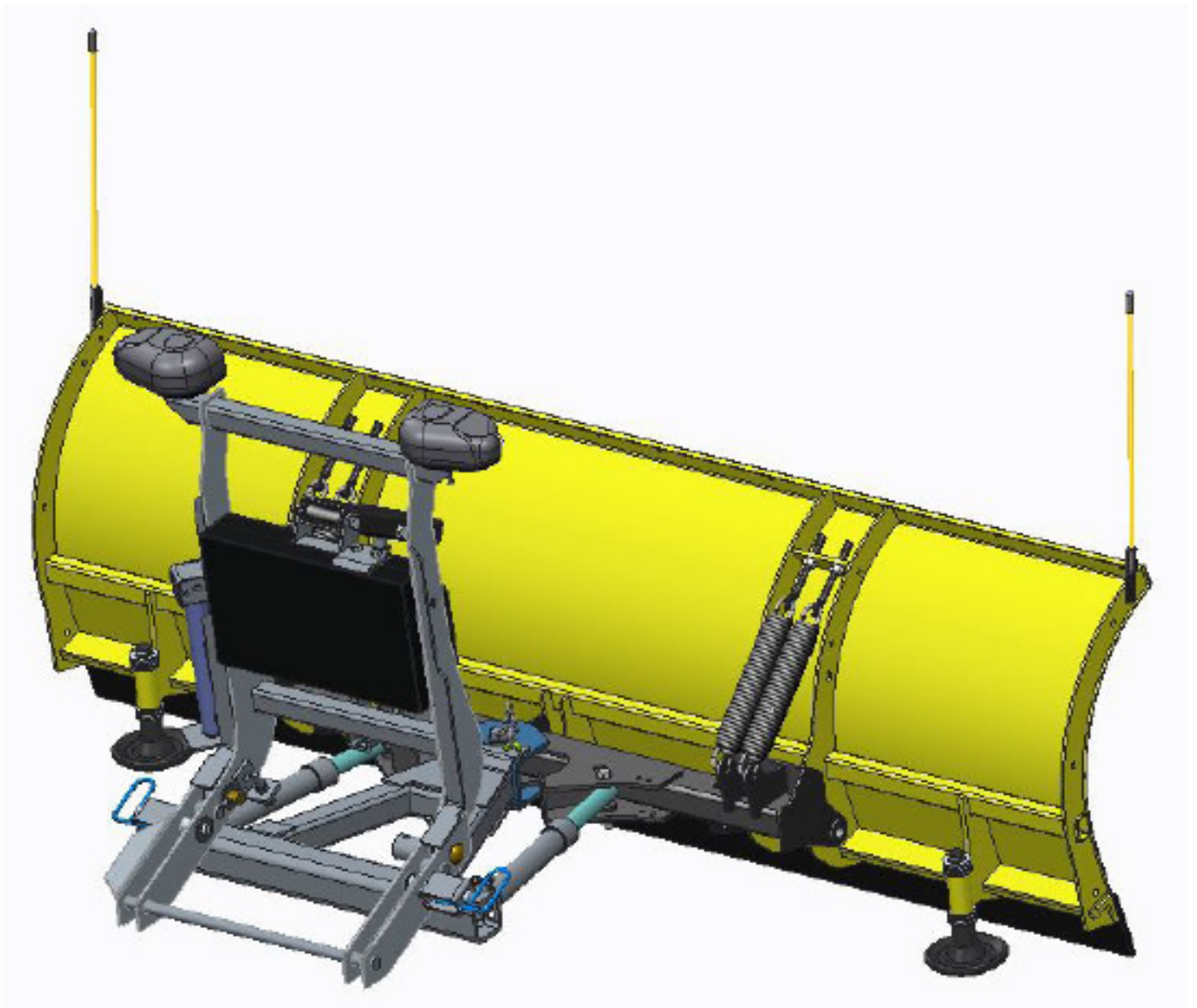


EZ Build Assembly and Installation

41330 Lot Pro Plow Standard Operating System with E-73 12V Hydraulic Unit



Meyer Products LLC reserves the right, under its continuing product improvement program, to change construction or design details, specifications and prices without notice or without incurring any obligation.

© 2016 Printed in the U.S.A.



Meyer Products LLC
18513 Euclid Ave. • Cleveland, Ohio 44112-1084
Phone 216-486-1313
www.meyerproducts.com • email info@meyerproducts.com

Table of Contents

General Information 1

Illustrated Parts Lists 2-4

Attaching Plow to EZ Build Assembly and Drop Speed Adjustment 5

Vehicle Side Wiring Diagram 6

Stop Bolt Adjustment 6

Mount Plow System To Vehicle 7

Dismount Plow System From Vehicle 8

Pre-Delivery Inspection 9

E-73 Hydraulic Unit Wiring and Accessories 10

Web Based Support

Service Manuals



<http://www.meyerproducts.com/TechSupport/ServiceManualsandInstallationInstructions.aspx>

EZ-Troubleshooter



<http://www.meyerproducts.com/techsupport/EZtroubleshooter.aspx>

Owners Manual



<http://www.meyerproducts.com/TechSupport/OwnersManuals.aspx>

Mount/DismountVideos



http://www.youtube.com/playlist?list=PLDE0602B305314D92&feature=edit_ok

Please visit our website to find our most updated technical information.

GENERAL INFORMATION

CAUTION Always disconnect battery prior to installation.

SAFETY PRECAUTIONS should be used when Quik Lift® is in a RAISED position.

LOWER plow to the ground when vehicle is PARKED.

OVERHAUL and SERVICE information is covered on separate instructions.

Tool list for Plow assembly:	
Pliers	9/16" socket
1/2" socket	3/4" box wrench
1/2" box wrench	15/16" box wrench
9/16" box wrench	15/16" deep well socket

WARNING Lift arm should be removed from vehicle if / when snowplow is removed.

Note:

1. Connect ground cable to negative side of battery for a solid connection to ground.
2. **CAUTION** Route all cables away from moving engine parts, Manifolds, and sharp sheet metal.
3. For weather protection, coat all connections with Meyer Dielectric Grease Part No. 15632
4. The vehicle must be equipped with a "Heavy Duty Battery" (70 Amp, Hr. Min.), 550 C.C.A. and "Alternator" (60 Amp. Min.) to obtain maximum performance.
5. Follow these instructions explicitly. Warranty does not apply to a Meyer product which has been negligently or improperly assembled or installed.

ADDITIONAL BATTERY CONNECTIONS

1. When attaching cables to battery with side post terminals, use M.P. Adaptor Part #21976.
2. Coat battery connections with battery terminal coating.

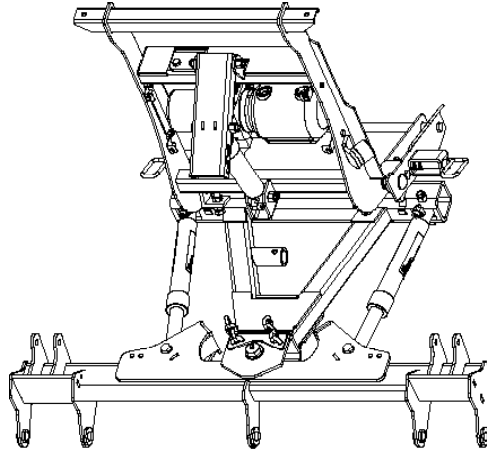
TORQUE CHART FOOT POUNDS

Bolt Nut Size	Gr. 2	Gr. 5	Gr. 8
1/4 - 20	4 - 5		
5/16 - 18	9 - 11		
3/8 - 16	17 - 20	26 - 29	
7/16 - 14		42 - 46	60 - 66
1/2 - 13		64 - 72	90 - 100
5/8 - 11		127 - 141	179 - 198

Please check the contents of your crate. Page 2 shows the assembled parts in the left hand column and the accessory box in the right hand column. Page 3 is the diagram for the left hand column of page 2.

Parts Diagram

41330 E-73 EZ Build



Parts List

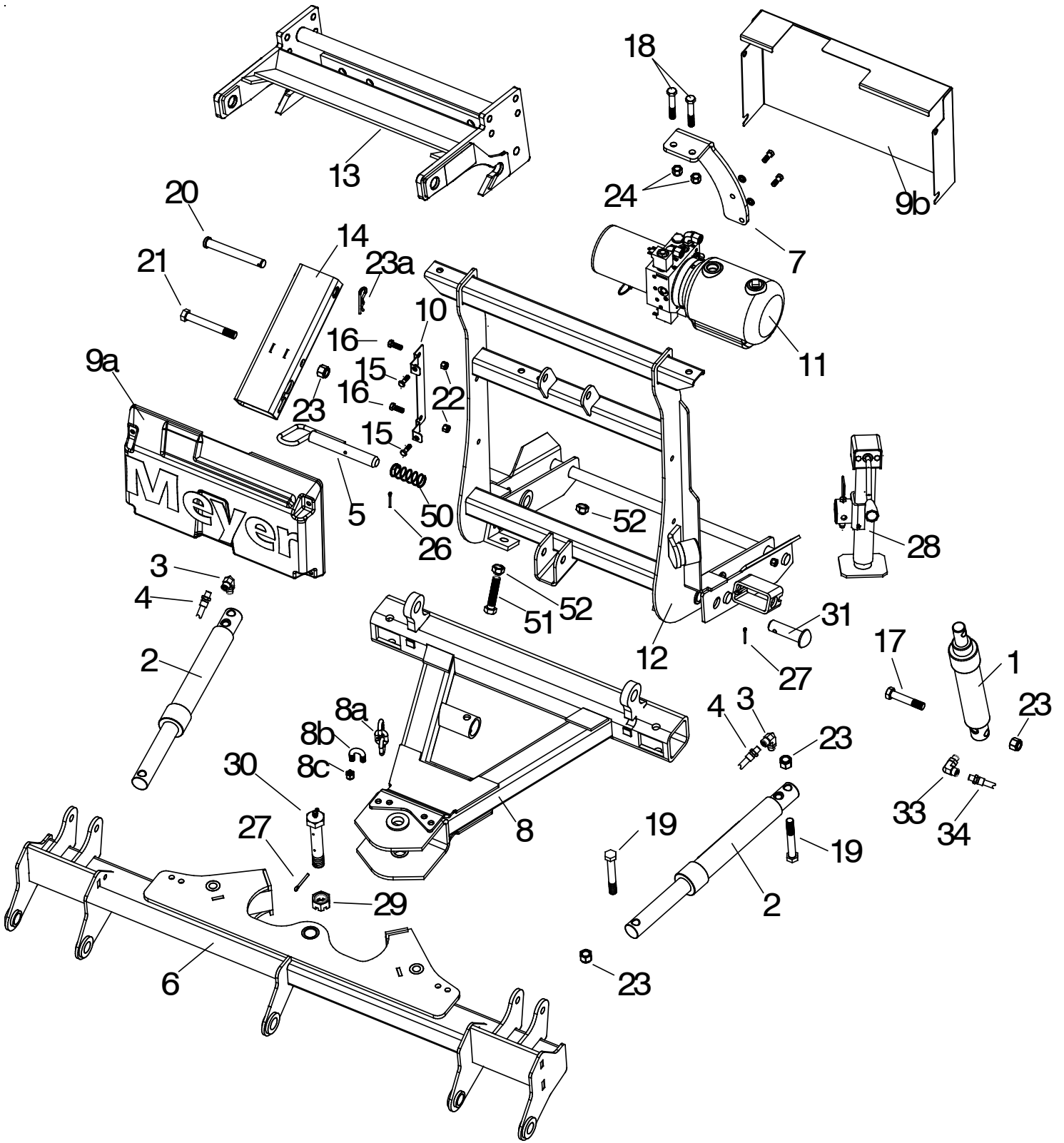
Item	E-73 PKG Part No.	Qty.	Description	Item	E-73 PKG Part No.	Qty.	Description
	41330	1	LP 7.5-9.0 E73 Plus Mount Assy.		41331	1	• Accessory Box
1	05818	1	Lift Ram 1.75 x 8"	35	23025	1	•• Power Cable
	07772	1	• L.H. Ram with Hose & Fittings	36	07017	4	•• Trip Spring
2	05887	1	•• Ram (1-1/2" x 10")		07810	1	•• Nite Saber III Kit
3	22866	1	•• SAE Mx3/8 90 Degree Elbow		09917	1	•• Plow Marker Kit
4	22885	1	•• Hose 1/4 x 54"	37	08214	2	••• Plow Marker
	07783	1	• R.H. Ram with Hose & Fittings	38	20027	4	••• Bolt H 5/16-18 x 1 Gr. 2
2	05887	1	•• Ram (1-1/2" x 10")	39	20304	4	••• Locknut 5/16-18
3	22866	1	•• SAE Mx3/8 90 Degree Elbow	40	20352	8	••• Flatwasher 5/16"
4	22921	1	•• Hose 1/4 x 38"	41	11844	1	•• Receiver Tube Cap
5	11859	2	• Blue Handle Pin	42	15220	1	•• Starter Solenoid - 12 volt
6	14214	1	• Pivot Bar Lot Pro	43	21832	1	••• Split Bushing
7	14185	1	• E-73 Mounting Bracket	44	23022	1	•• Controller
8	14222	1	• A-Frame Lot Pro Plus	45	23033	1	•• Truck Side Harness
8a	21541	2	• Chain 5/16 x 38" Gr. 43		41302	1	•• Hardware Bag
8b	8518001026	2	• U-Bolt 7/16-14	46	09124	4	••• Eye Bolt
8c	20306	4	• Locknut 7/16-14	47	20406	3	••• Cotter Pin 3/16 x 1-1/2"
9a	14289	1	• Lift Unit Cover Front	48	22331	1	••• Hex Head Pin 1 x 3-5/16"
9b	14288	1	• Lift Unit Cover Rear	49	22375	2	••• Pivot Pin 1 x 8-3/4"
10	14290	2	• Lift Unit Cover Bracket	50	814000005	2	• Spring
11	16024	1	• Lift Assembly (Unit only)	51	8500003307001	2	• Bolt H 5/8-11 x 3 Full Thread
12	18906	1	• Lift Frame	52	8501003013	4	• 5/8-11 Jam Nut
13	19370	1	• Clevis	53	20331	2	• Lockwasher 5/8"
14	19592	1	• Lift Arm	54	23034	1	• Keyed Ignition Relay
15	20027	4	• Bolt H 5/16-18 x 1" Gr. 2				
16	20049	4	• Bolt H 3/8-16 x 1" Gr. 2				
17	20146	1	• Bolt H 5/8 - 11 x 3-1/4" Gr. 5				
18	20101	2	• Bolt H 1/2 - 13 x 3 Gr. 5				
19	20150	4	• Bolt H 5/8 - 11 x 4-1/2" Gr. 5				
20	22989	1	• Pin 5/8 x 5-3/4"				
21	20153	1	• Bolt H 5/8 - 11 x 5-1/2" Gr. 5				
22	20305	4	• Locknut 3/8-16				
23	20309	6	• Locknut 5/8-11				
23a	22845	1	• Hair Pin				
24	20307	2	• Locknut 1/2-13				
25	22153	1	• Lockbolt 5/16 x 5/8				
26	20406	3	• Cotter Pin 3/16 x 1-1/2"				
27	20420	2	• Cotter Pin 1/4 x 2"				
28	22022	1	• Crank Stand				
29	22274	1	• Slotted Nut 1-8				
30	22398	1	• King Bolt 1-8 x 5-1/2"				
31	22436	2	• Pin 1 x 3"				
32	23023	1	• Plow Side Harness				
33	22866	1	• SAE Mx3/8 90 Degree Elbow				
34	22884	1	• Hose 1/4 x 33"				

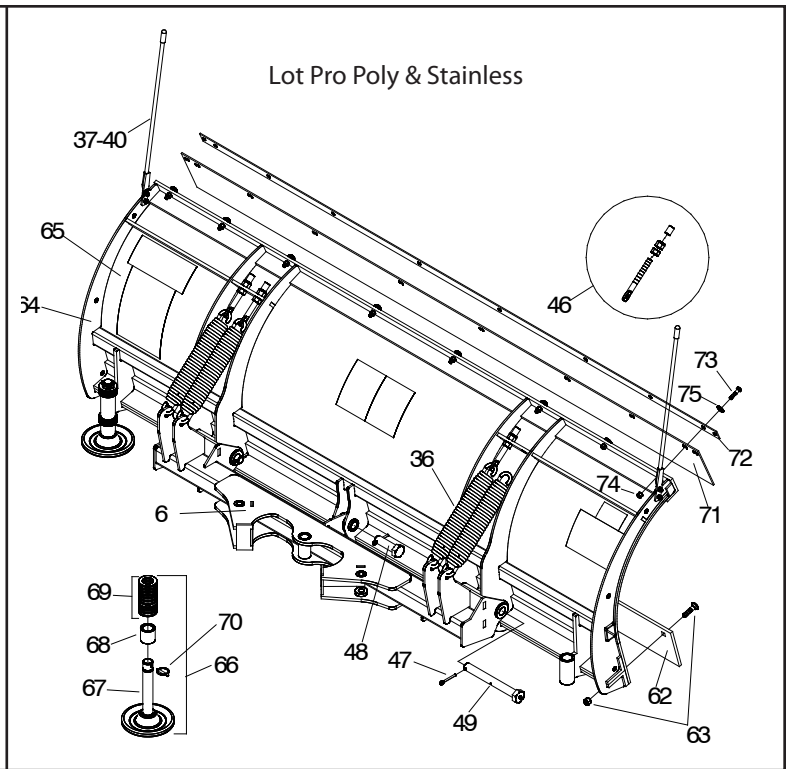
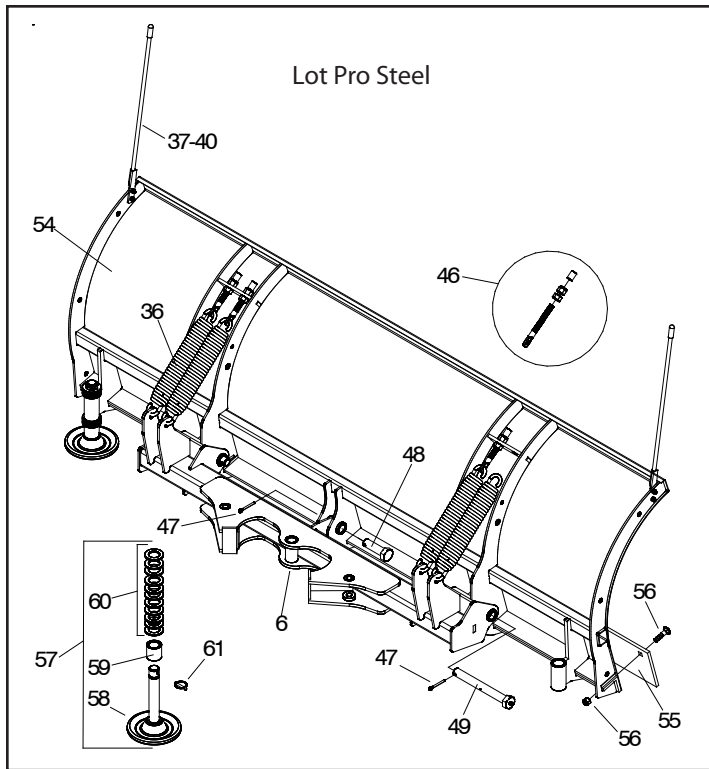
Parts indented are included in the carton, bag or assembly under which they are indented.

Meyer Products LLC reserves the right, under its continuing product improvement program, to change construction or design details, specifications and prices without notice or without incurring any obligation.

41330 E-73 Assembly

41330 E-73
Specific Components





Lot Pro Steel Parts List

Item	LPLD-7.5	LP - 7.5	LP - 8.0	LP - 8.5	LP - 9.0	Qty	Description
54	09428	09400	09401	09402	09403	1	Moldboard Assembly
55	09796	09797	09133	09134	07259	1	• Cutting Edge
56	08486	08486	-----	-----	-----	1	• Bolt C 1/2-13 x 1-3/4 & Locknut (Kit of 9 each)
56	-----	-----	08692	08692	-----	1	• Bolt C 1/2-13 x 2 & Locknut (Kit of 10 each)
56	-----	-----	-----	-----	08318	1	• Bolt C 5/8-11 x 2-1/4 & Locknut (Kit of 12 each)
57	09362	09362	09362	09362	09362	2	• Mushroom Shoe Casting Assy.
58	12394	12394	12394	12394	12394	1	•• Runner Shoe Casting
59	12449	12449	12449	12449	12449	1	•• Runner Spacer
60	20363	20363	20363	20363	20363	11	•• Flatwasher 1-1/4
61	22083	22083	22083	22083	22083	1	•• Linch Pin

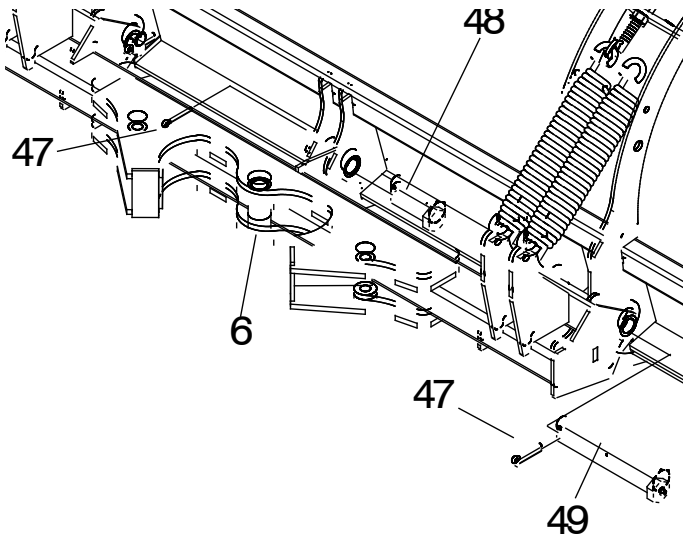
Lot Pro Poly & Stainless Parts List

Item	LPPLD-7.5	LPP - 7.5	LPP - 8.0	LPP - 8.5	LPP - 9.0	LPS - 8.0	LPS - 9.0	Qty	Description
	09432	09404	09405	09406	09407	09410	09411	1	Moldboard Assembly
62	09796	09797	09133	09134	07259	09133	07259	1	• Cutting Edge
63	08692	08692	08692	08692	-----	08692	-----	1	• Bolt C 1/2-13 x 2 & Locknut (Kit of 10 each)
63	-----	-----	-----	-----	08318	-----	08318	1	• Bolt C 5/8-11 x 2-1/4 & Locknut (Kit of 12 each)
64	13475	12810	12811	12812	12813	12811	12813	1	• Moldboard Frame Weldment
65	13143	12809	12814	12815	12818	-----	-----	1	• Plastic Sheet
65	-----	-----	-----	-----	-----	13179	13180	1	• Stainless Steel Sheet (304)
66	09362	09362	09362	09362	09362	09362	09362	2	• Mushroom Shoe Casting Assy.
67	12394	12394	12394	12394	12394	12394	12394	1	•• Runner Shoe Casting
68	12449	12449	12449	12449	12449	12449	12449	1	•• Runner Spacer
69	20363	20363	20363	20363	20363	20363	20363	11	•• Flatwasher 1-1/4
70	22083	22083	22083	22083	22083	22083	22083	1	•• Linch Pin
71	12073	12073	12009	12014	12118	12009	12118	1	• Deflector
72	12487	12487	12497	12498	12031	12497	12031	1	• Re-Inforcement Bar
73	20051	20051	-----	-----	-----	-----	-----	8	• Bolt H 3/8-16x1-1/2"
73	-----	-----	20051	20051	20051	20051	20051	10	• Bolt H 3/8-16x1-1/2"
74	20305	20305	-----	-----	-----	-----	-----	8	• Locknut 3/8-16
74	-----	-----	20305	20305	20305	20305	20305	10	• Locknut 3/8-16
75	20353	20353	-----	-----	-----	-----	-----	8	• Flatwasher 3/8"
75	-----	-----	20353	20353	20353	20353	20353	10	• Flatwasher 3/8"

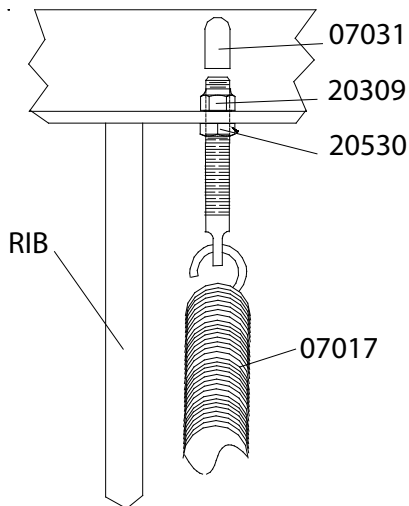
Parts indented are included in the assembly under which they are indented.

Attaching Plow to EZ Build Assembly

- A. Liberally coat Pivot Pins (48 & 49) with Coolube Multi-Purpose Premium Grease Part No. 15181.
- B. Attach Pivot Bar (6) to Moldboard with Pivot Pins (48 & 49) (grease fitting facing outward) and insert Cotter Pins (47). Grease outer Pivot Pin's (49) using grease fitting.

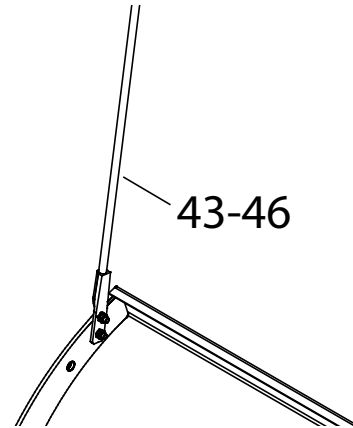


- C. Attach Eye Bolts (46) to Moldboard and Trip Springs (36) to Pivot Bar (6), making certain locknuts are positioned as shown below.
- D. Make certain each Eye Bolt (46) is in a vertical position as shown below so that the Eye Bolt (46) and Trip Spring (36) hinge properly when moldboard trips.



Note: Proper tension is attained when Trip Spring (36) coils just begin to separate and then tightening top locknut four additional turns. Tighten bottom Locknut (20530) to secure Eyebolt in position. Install Eyebolt caps (07031) over exposed threads.

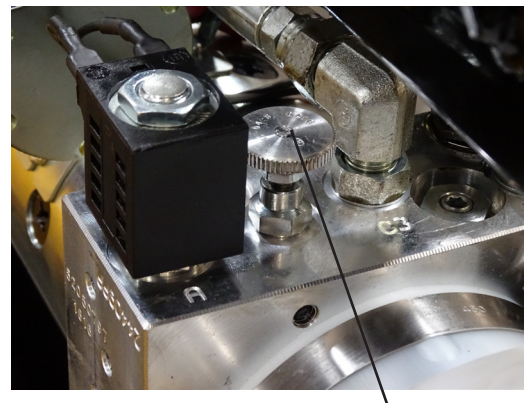
- E. Attach Plow Markers (37) to moldboard using 5/16-18 x 1" Bolt (38), 5/16" Flatwasher (40) and 5/16-18 Locknut (39)



- F. Attach the Lift Chain to the Lift Arm (14) through the two hooks on the lift arm. Adjust the lift chain at the lift arm so that there are 2-3 links of slack. This ensures that the plow blade will lift fully and be able to follow the ground contour while plowing.



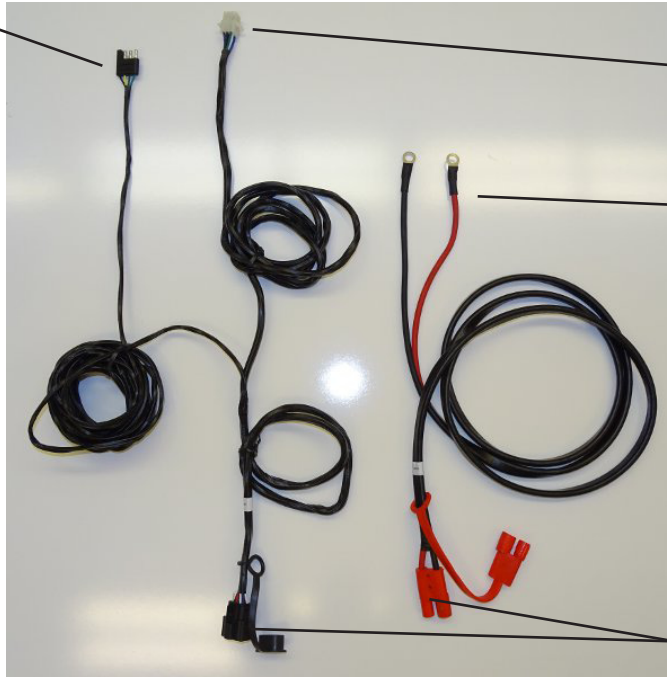
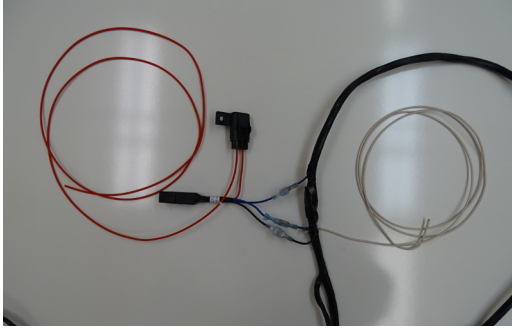
E-73 Drop Speed Adjustment: Loosen jam nut and turn knob clockwise to slow the drop of the plow and counter clockwise to speed the drop of the plow. Tighten jam nut.



Drop Speed Adjustment

Vehicle Side Wiring Diagram

Route to rear of vehicle and plug into vehicle trailer harness



Route into vehicle cab and plug into controller.

Route through grille of vehicle into engine compartment and connect red to positive and black to negative post of vehicle battery.

Plug both harnesses into the plow side harness.

Optional Keyed Ignition Realy (54). Un-plug blue wires on middle of Truck Side Control Harness (45) and plug in the Keyed Ignition Relay (54) (Blue to Blue and Black to Black) Connect Red wire with 5 amp fuse to vehicle keyed ignition source. White wire will connect to 2015 & Later GM vehicles with alternator relay. See Meyer Products Service Bulletin SB252.

G. Run Truck Side Control Harness (45) through a hole in grille and into the engine compartment.

CAUTION Secure Truck Side Control Harness (45) from any hot or moving parts with tie wraps as needed.

- H. Drill a 1-1/4" Diameter Hole through firewall to install split bushing (43) and extend the harness into the cab of the vehicle.
- I. Run trailer end of Truck Side Control Harness to the back of the vehicle and plug into flat 4 pin trailer connector on vehicle. Be sure to add dielectric grease to the plug connection.
- J. Route Power harness through grille of vehicle and connect red to (positive post) and black wire to (negative post) of vehicle battery.

Top off the unit to the fill line on the reservoir with Meyer M-1 Hydraulic Fluid.

NOTE: Proper fluid level is to the fill line on the reservoir for the E-73. It must be checked with the lift cylinder fully retracted.

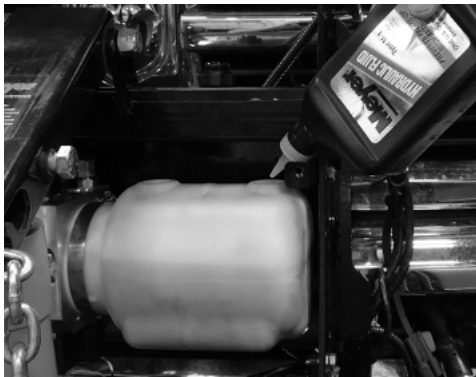
For snow plow light installation see separate instructions.

Connect both male ends from the snow plow light to the female ends on the Plow Side Harness (32).

Check snow plow light blinkers to make sure the wires have not been reversed.

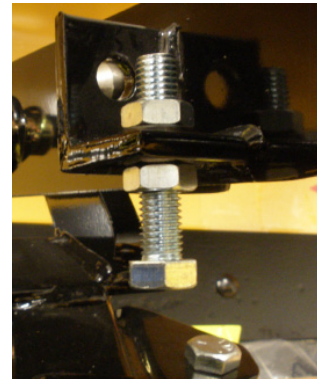
Note: All electrical connections should have both ends coated with a dielectric grease, Meyer Part No. 15632, prior to final installation. This will ensure a good connection and help in preventing corrosion.

- K. Refer to Operation and Maintenance Manual for complete controller operation.



- L. Assemble adjustable stacking stop bolts to lift frame (12) using 5/8-11 x 3" bolts (51), lockwasher (53) and jamnuts (52). See below.

Note: Adjustment must be made after moldboard assembly is installed. Adjustment bolts (51) should make contact with the a-frame before any part of the A-Frame/ Sector or moldboard come in contact with the lift arm and, or hydraulic unit while raising the snowplow or stacking snow. Moldboard should be checked in all positions.



Hydraulic Solenoid Color Code:

OPERATION - SOLENOID COMBINATION

RAISE - Motor Solenoid + "B" Solenoid

LOWER - "A" Solenoid Only

LEFT ANGLE - Motor Solenoid Only

RIGHT ANGLE - Motor Solenoid + "C" Solenoid

COIL COLOR CODE

MOTOR SOLENOID - WHITE WIRE

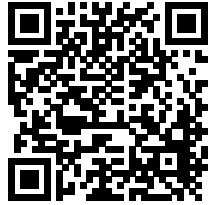
"A" - BLACK WIRE

"B" - RED WIRE

"C" - GREEN WIRE

GROUND WIRE EACH COIL BLACK W/WHITE STRIPE

Mount Plow To Vehicle



For Mounting and Dismounting instructional videos please visit www.youtube.com/meyerproducts



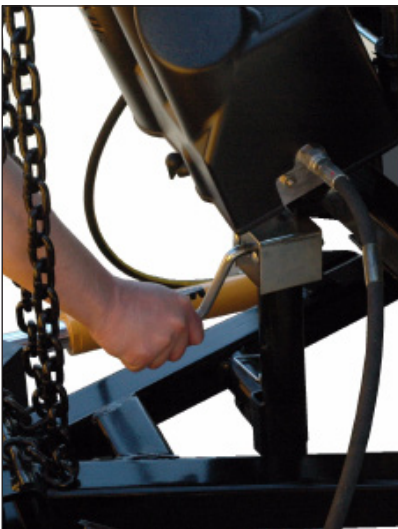
A. Pull vehicle into plow assembly and push plow assembly forward an inch or two.



B. Twist handles on both sides to engage spring loaded pins.



C. Push back on lift frame until both pins spring through mount on vehicle.



D. Adjust crankstand until it is no longer in contact with the ground.



E. Remove crankstand from a-frame.



F. Attach crankstand to lift frame.



G. Remove weather cover on both ends and connect both electrical plugs.

Meyer Products assumes no responsibility for installations not made in accordance with these instructions.

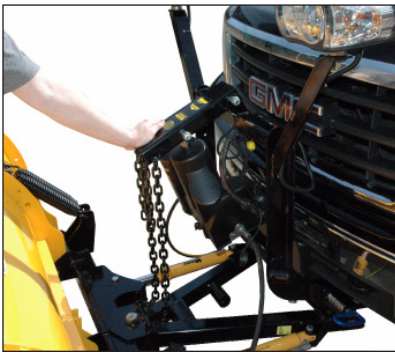
Dismount Plow From Vehicle



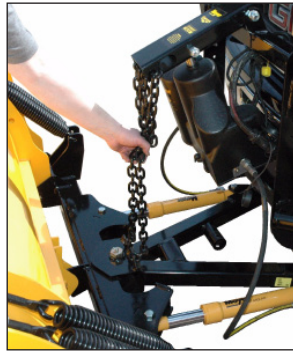
For Mounting and Dismounting instructional videos please visit www.youtube.com/meyerproducts



A. Press down button until float light turns blue.



B. Push lift arm down until there is slack in the chain.



C. Remove crankstand from lift frame.



D. Attach crankstand to a-frame



E. Adjust crankstand until crankstand comes into contact with the ground and then turn 1 to 2 revolutions.



F. While slightly pushing the lift frame towards vehicle pull handles on either side to disengage pins then twist until the leg locks the pin in the open position.



G. Disconnect both electrical plugs and install weather cover on both ends.



H. Back vehicle away from plow assembly.

Meyer Products assumes no responsibility for installations not made in accordance with these instructions.



PRE-DELIVERY INSPECTION

Vehicle Make: _____

Vehicle Model: _____

Vehicle Year: _____

Vehicle VIN#: _____

Vehicle FGAWR: _____

Installing Company: _____

Mounting Type:

EZ Plus

Plow Type:

7.5

8.0

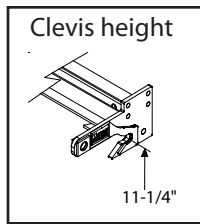
8.5

9.0

Hydraulic Serial Number: _____

Moldboard Serial Number: _____

- All bolts torqued to specification
- Suspension interference
- Clevis height in inches _____
- Trip springs adjusted
- Lift Chain Adjusted
- Check for hydraulic fluid leaks
- Hydraulic fluid Level
- Dielectric grease applied to ALL electrical connection
- All wires secured
- Plow Stops Adjusted (plow cannot bump hyd. unit)
- Controller Operation



- Plow Operation Up
- Plow Operation Left
- Plow Operation Right
- Plow Operation Down
- Plow Light Blinker Left & Right Operation
- Plow Light Low & High Beam Operation
- Plow Lights Adjusted
- Plow Mount/Dismount reviewed with Customer
- Plow Operation reviewed with Customer
- Warranty/Registration/Owners Manual reviewed with Customer

Comments:

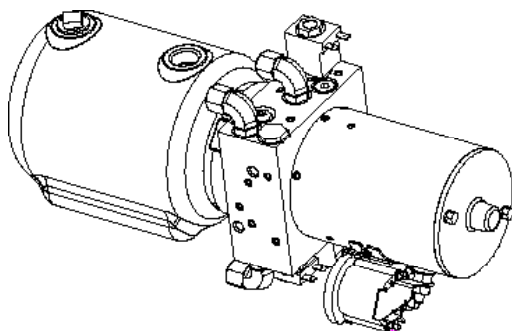
Inspected By: _____ W.O.# _____ Date: _____

Customer Signature: _____

Please see your owner's manual for Pre-Season, Post-Season and general maintenance.

Serial Number Decal Locations

E-73 unit serial number is under the cover attached to the hydraulic unit.



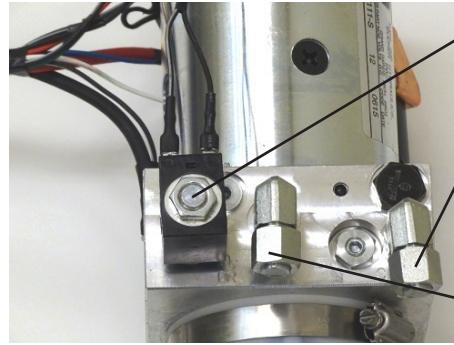
Moldboard serial number is attached to the back of the moldboard.



E-73 Wire and Hose Locations



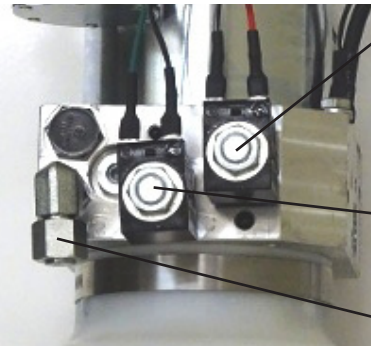
To Plow Lights
To Vehicle Harness



"A" Valve Black & Black with White Stripe

Left Angle Cylinder

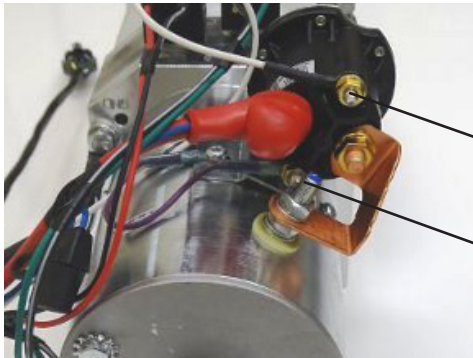
Lift Cylinder



"B" Valve Red & Black with White Stripe

"C" Valve Green & Black with White Stripe

Right Angle Cylinder



Motor Solenoid White

Motor Solenoid Purple

Please visit <http://www.meyerproducts.com/plows/lotpro.aspx> for a complete listing of accessories

Lot Pro Moldboard Accessories

PART NO.	DESCRIPTION	CUTTING EDGE KITS			DEFLECTOR KITS			CURB GUARDS	ADJ. WINGS	BOX WINGS	FIXED WINGS	TRIP-DAMPENING COMPLETE KIT
		Steel	Rubber	Urethane	Molded	Rubber	Poly					
09400	LP 7.5 STEEL	08178*	08189	08119	12039	08109	12078	08344	08380	08104	08110	08243
09401	LP 8.0 STEEL	08180*	08190	08160	12040	08111	12024	08344	08380	08104	08110	08243
09402	LP 8.5 STEEL	08182*	08191	081621	2041	08112	12025	08344	08380	08104	08110	08243
09403	LP 9.0 STEEL	08185*	08192	08164	12042	08113	12123	08344	08380	08104	08110	08243
09404	LPP 7.5 POLY	08178*	08189	08119	12039	08109	12078*	08344	08380	08104	08110	08243
09405	LPP 8.0 POLY	08180*	08190	08160	12040	08111	12024*	08344	08380	08104	08110	08243
09406	LPP 8.5 POLY	08182*	08191	08162	12041	08112	12025*	08344	08380	08104	08110	08243
09407	LPP 9.0 POLY	08185*	08192	08164	12042	08113	12123*	08344	08380	08104	08110	08243

*Included with moldboard

Mounting Accessories

16529
Meyer
Winch Cradle



08300 Brush Guard

Optional Light Guards
16536 ('99-07 Ford)
16537 ('99 + Chevy)
16539 ('99 + Dodge)

Meyer Products LLC
18513 Euclid Ave. • Cleveland, Ohio 44112-1084
Phone 216-486-1313
www.meyerproducts.com • email info@meyerproducts.com