



# Parts & Installation Instructions

## SV & SV<sup>2</sup> 8.5, 9.5 & 10.5 Skidsteer Snow Plow

### PARTS LIST

Item	Part No. SV 8.5	Part No. SV <sup>2</sup> 8.5	Part No. SV 9.5	Part No. SV <sup>2</sup> 9.5	Part No. SV <sup>2</sup> 10.5	Qty.	Description
<b>Moldboard Assembly</b>							
	<b>09217</b>	-----	<b>09226</b>	-----	<b>09237</b>	1	<b>R.H. &amp; L.H. Wing</b>
1	09208	09442	09212	09444	09280	1	• R.H. Wing
2	09209	09443	09213	09445	09279	1	• L.H. Wing
3	12540	13923	12568	13924	13081	2	•• Trip Edge Weldment
4	22438	22438	22438	22438	22438	8	•• 1 X 2-1/2" Pin
5	20420	20420	20420	20420	20420	8	•• 1/4 x 2" Cotter Pin
6	12528	84285	12528	84285	12528	2	•• T-Bar Weldment
7	07215	07215	07215	07215	07215	4	•• Trip Spring
8	20145	20145	20145	20145	20145	2	•• Bolt H 5/8-11 x 3" Gr. 5
9	20318	20318	20318	20318	20318	2	•• Locknut 5/8-11
10	20357	20357	20357	20357	20357	4	•• Flatwasher 5/8
11	09124	09124	09124	09124	09124	4	•• Eyebolt w/Locknuts and Cap
<b>Cutting Edge Kit</b>							
12	<b>09218</b>	<b>09218</b>	<b>09219</b>	<b>09219</b>	<b>09110</b>	1	<b>Cutting Edge Kit</b>
	09210	09210	09211	09211	09111	2	• Cutting Edge
	08222	08222	08222	08222	08222	1	• Hardware Bag
13	20307	20307	20307	20307	20307	11	•• Locknut 1/2-13
14	21961	21961	21961	21961	21961	9	•• Bolt C 1/2-13 x 2"
18	22066	22066	22066	22066	22066	2	•• Bolt C 1/2-13 x 2-3/4" Gr.5
<b>Bottom Belt Kit</b>							
** 15	<b>09229</b>	<b>09229</b>	<b>09229</b>	<b>09229</b>	<b>09229</b>	1	<b>Bottom Belt Kit</b>
	12538	12538	12538	12538	12538	1	•• Bottom Belt
	08131	08131	08131	08131	08131	1	•• Hardware Bag
* 16	12549	12549	12549	12549	12549	2	••• Backing Plate
* 17	20307	20307	20307	20307	20307	2	••• Locknut 1/2-13
* 18	22066	22066	22066	22066	22066	2	••• Bolt C 1/2-13 x 2-3/4" Gr.5
<b>Hardware Carton</b>							
** 19	<b>08752</b>	<b>08752</b>	<b>08752</b>	<b>08752</b>	<b>08752</b>	1	<b>Hardware Carton</b>
	12557	12557	12557	12557	12557	1	•• Pivot Pin
* 20	20095	20095	20095	20095	20095	1	•• Bolt H 1/2-13 x 1-1/2" Gr. 5
* 21	20329	20329	20329	20329	20329	1	•• Lockwasher 1/2
**	<b>08852</b>	<b>08852</b>	<b>08852</b>	<b>08852</b>	<b>08852</b>	1	<b>Plow Marker Kit</b>
22	811000095	811000095	811000095	811000095	811000095	2	••• Plow Marker
23	22249	22249	22249	22249	22249	4	••• Locknut 1/4-20 SS
24	22250	22250	22250	22250	22250	4	•• Bolt H 1/4-20 x 1" SS
<b>Top Deflector Kit</b>							
** 25	<b>09230</b>	<b>09230</b>	<b>09230</b>	<b>09230</b>	<b>09230</b>	1	<b>Top Deflector Kit</b>
	12536	12536	12536	12536	12536	1	• Top Deflector
	08745	08745	08745	08745	08745	1	• Hardware Bag
* 26	13724	13724	13724	13724	13724	1	•• Deflector Brace
* 27	20028	20028	20028	20028	20028	7	•• Bolt H 5/16-18 x 1-1/4" Gr. 2
* 28	20352	20352	20352	20352	20352	7	•• Flatwasher 5/16
* 29	20304	20304	20304	20304	20304	7	•• Locknut 5/16-18
30	08963	08963	08963	08963	08963	1	SV & SV <sup>2</sup> Skid Steer Kit
	14035	14035	14035	14035	14035	1	• Skidsteer A-frame Assy.
31	07628	07628	07628	07628	07628	2	• DA Wing Ram Assy.
	05755	05755	05755	05755	05755	1	•• DA Ram 1-1/2 x 12"
32	22884	22884	22884	22884	22884	1	•• Hose 1/4 x 33" SAE 6
33	22941	22941	22941	22941	22941	1	•• Hose 3/8 x 33" SAE 6
34	22866	22866	22866	22866	22866	2	•• Elbow SAE 6 x 3/8 ORF-M
35	22868	22868	22868	22868	22868	2	•• Strgt Fittg SAE 6 x 3/8 ORF-M
36	22955	22955	22955	22955	22955	1	• Skid V Plow Side Harness
37	22956	22956	22956	22956	22956	1	• Skid V Vehicle Side Harness
38	23020	23020	23020	23020	23020	1	• Skid V Controller
39	16018	16018	16018	16018	16018	1	• Skid V Hydraulic Block
40	08503	08503	08503	08503	08503	1	• Harware Bag Skid V
41	20038	20038	20038	20038	20038	2	•• Bolt H 5/16-18 x 3-3/4" Gr.5
42	20152	20152	20152	20152	20152	2	•• Bolt H 5/8-11 x 5" Gr.5
43	20153	20153	20153	20153	20153	2	•• Bolt H 5/8-11 x 5-1/2" Gr.5
44	20304	20304	20304	20304	20304	2	•• Locknut 5/16-18
	20309	20309	20309	20309	20309	4	•• Locknut 5/8-11

\* (SV & SV<sup>2</sup>) Items in 08660 Hardware Bag included in 08752

\*\* (SV & SV<sup>2</sup>) Items packed in the 08752 Hardware Carton

Parts indented are included in the carton, bag or assembly under which they are indented.

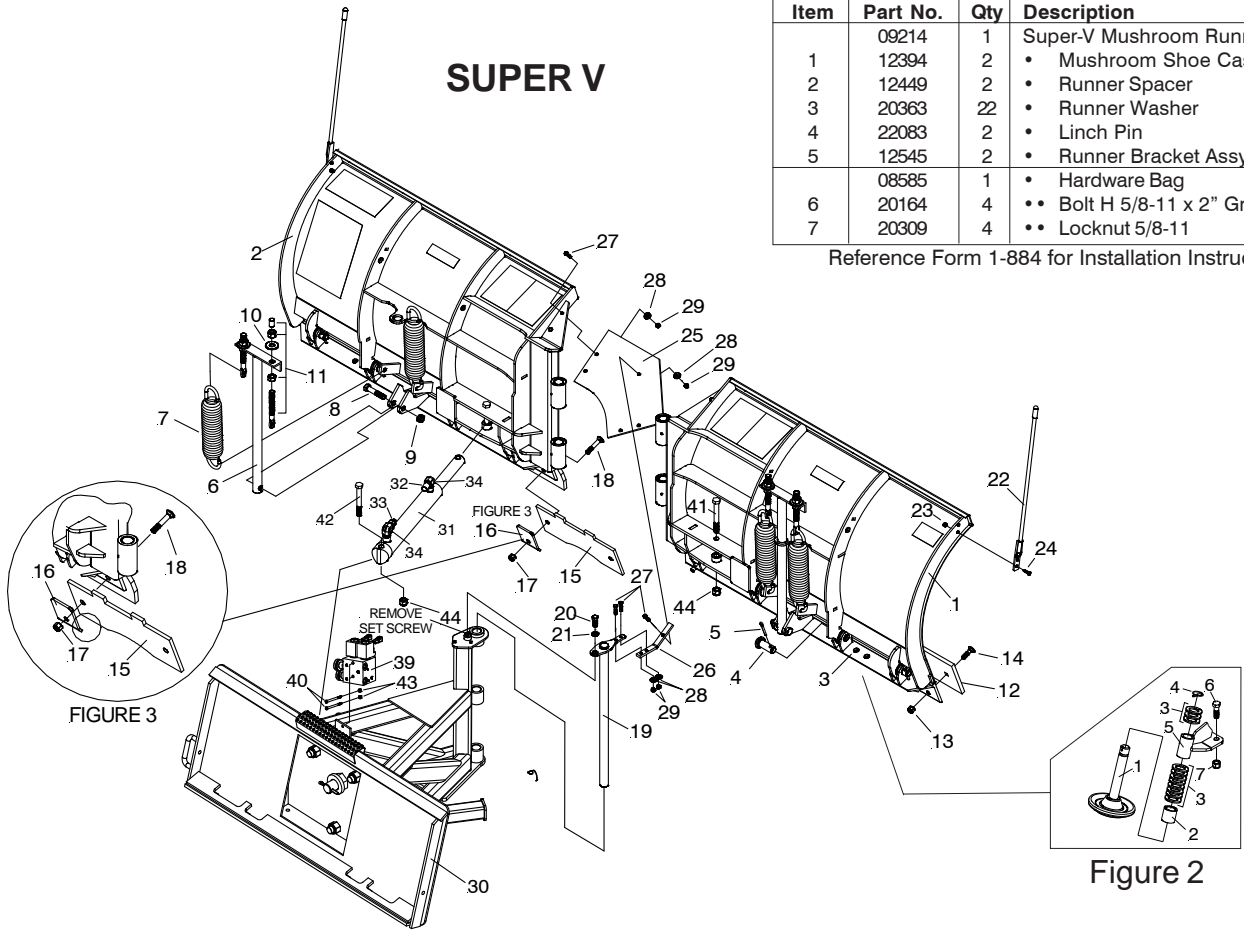
Meyer Products LLC reserves the right, under its continuing product improvement program, to change construction or design details, specifications and prices without notice or without incurring any obligation.



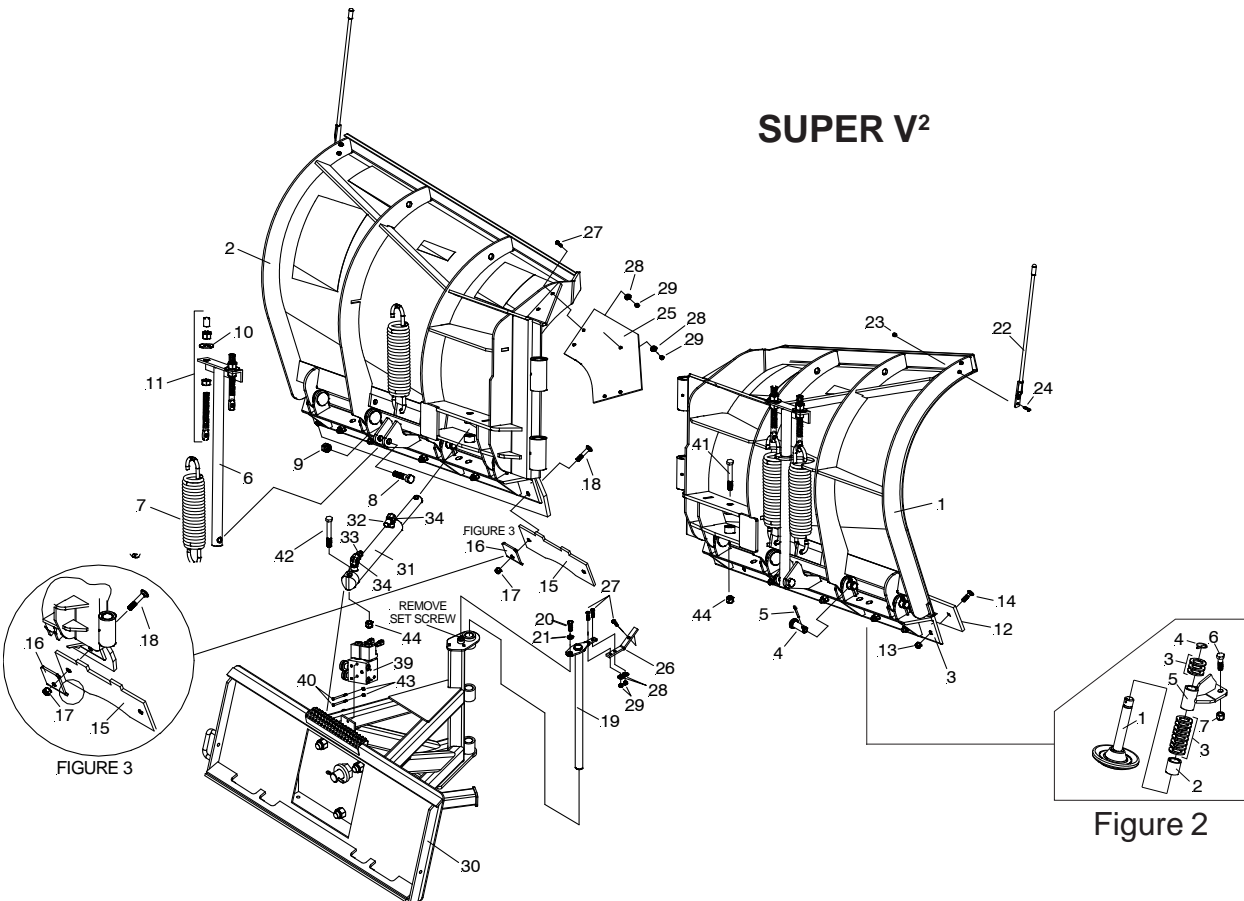
**OPTIONAL MUSHROOM RUNNERS - FIGURE 2**  
PARTS LIST

Item	Part No.	Qty	Description
1	09214	1	Super-V Mushroom Runner Kit
2	12394	2	• Mushroom Shoe Casting Assy.
3	12449	2	• Runner Spacer
4	20363	22	• Runner Washer
5	22083	2	• Linch Pin
6	12545	2	• Runner Bracket Assy.
7	08585	1	• Hardware Bag
8	20164	4	• Bolt H 5/8-11 x 2" Gr. 5
9	20309	4	• Locknut 5/8-11

Reference Form 1-884 for Installation Instructions



**SUPER V<sup>2</sup>**



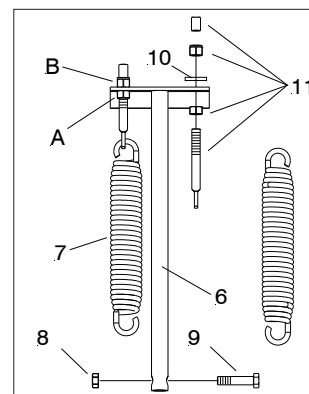
# INSTALLATION INSTRUCTIONS:

1. Position wing assemblies 1 & 2 face down on cardboard as not to damage the painted surfaces. Grease the bushings on both left and right wings. Position the wings so pivot bushings align. Note: Cutting Edges will be inline at this time.
2. Remove 1/2"-13 x 1" set screw located in top of A-Frame (30) tower. Grease A-Frame (30) bushings and Pivot Pin (19). With a helper, lift the A-Frame (30) and insert its bushings in alignment with the wing bushings.
3. Insert Pivot Pin (19) through bushings. Install and tighten 1/2" x 1.50" bolt (20) and 1/2" lockwasher (21) to top of A-Frame holding Pivot Pin (19) in place. Note: Wipe off any excess grease at this time.
4. Using the A-Frame as leverage tilt the moldboard assembly raising the Cutting Edges off the ground. Support Cutting Edges (12) 5 to 6 inches off the ground.
5. Install the Bottom Belt (15) to left and right wing at Tripedge (3) using 1/2" x 2.75" carriage bolt (18) and locknut (17). Note: Be sure that Belt (15) folds are upward and notches are toward the A-Frame (30). Assemble Backing Plate (16) so bent end is facing the cutting edge forcing the belt against the Tripedge (3). See Figure 3.
6. Using the A-Frame as leverage tilt the moldboard assembly raising the Cutting Edges off the supports. Remove supports and set moldboard assembly to the upright position.
7. Assemble Snow Deflector Brace (26) to Pivot Pin (19). Place brace under the pivot pin plate. Attach using two 5/16" x 1-1/4" bolts (27), 5/16 washers (28) and 5/16 locknuts (29).
8. Position moldboard assembly in the "Vee" position.
9. Assemble Top Snow Deflector (25) positioning the deflector under deflector brace (26). Attach deflector ends under left and right wing gussets using 5/16" x 1-1/4" bolts (27), 5/16 locknuts (29) and 5/16 washers (28). Tighten locknuts such that washers slightly compress the rubber surface.  
Note: Snow Deflector Belt should fold/loop downward between brace and each wing gusset when wings are not in the "Vee" position.
10. Assemble ram assemblies as shown using Bolt H 5/8-11 x 5" (41) on the wing side and Bolt H 5/8-11 x 5-1/2" (42) on the A-frame side and 5/8-11 locknut (44).
11. Assemble Skid V Hydraulic Block (39) to A-frame (30) using Bolt H 5/16-18 x 3-3/4" (40) and 5/16-18 Locknut (43).
12. Attach left wing 1/4" hose to Skid V Hydraulic Block (39) at port C3 and 3/8" hose at port C4.
13. Attach right wing 1/4" hose to Skid V Hydraulic Block (39) at port C2 and 3/8" hose at port C1.
14. You will need to provide your own hose and coupling to attach to your skidsteer hydraulics. Then attach to the Skid V Hydraulic Block (39) at port A and B. The port size is SAE 6.
15. Attach Skid V Vehicle side harness (37) red wire to the positive post and black wire to the negative post of the vehicle battery.
16. Attach the Skid V Plow side harness (36) with the plug with the Green wire to Skid V Hydraulic Block (39) left solenoid and the plug with the White wire to Skid V Hydraulic Block (39) right solenoid.
17. Plug the Skid V Vehicle side harness (37) into the Skid V Plow side harness (36). Then plug in the Skid V Controller (38) into the Skid V Vehicle side harness (37).

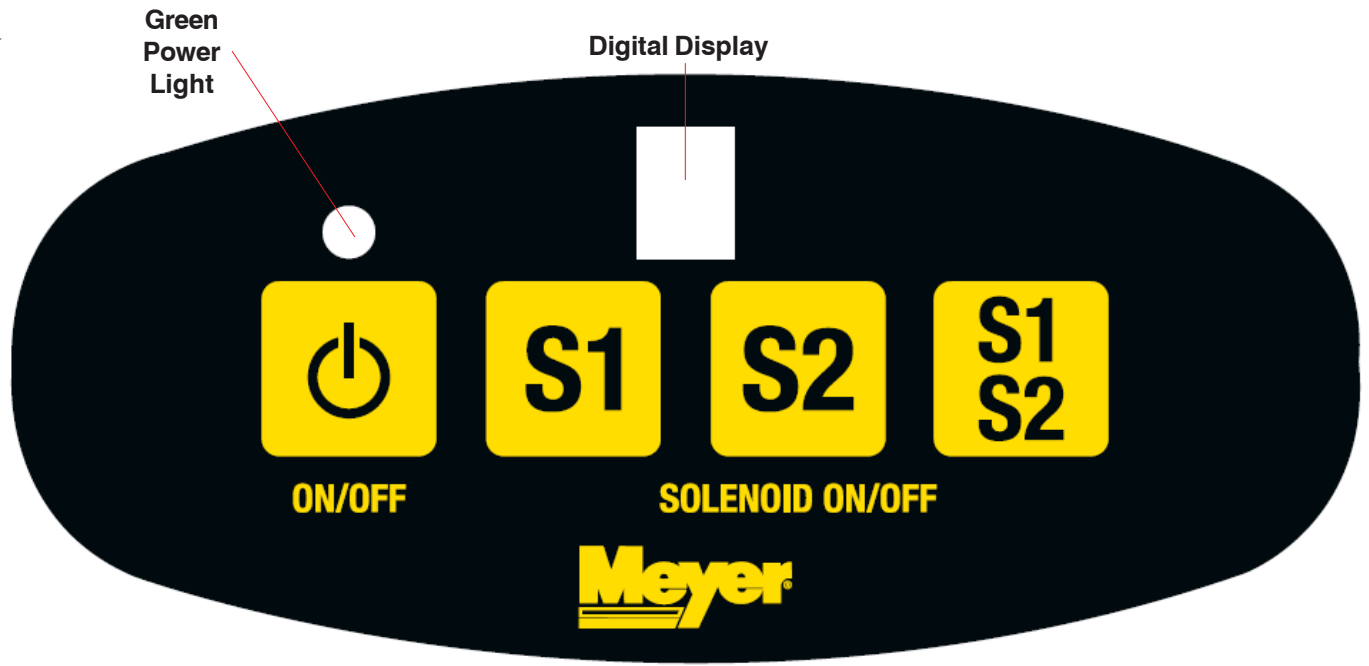
## CAUTION: CHECK THE TRIPEDGE ADJUSTMENT AT THIS TIME.

- A. THE SPRINGS ARE PROPERLY ADJUSTED WHEN A PIECE OF PAPER CAN BE PLACED BETWEEN EACH COIL.
- B. IF THE TRIPEDGE SPRINGS NEED ADJUSTMENT, LOOSEN THE BOTTOM NUT (A) ON BOTH SPRING ASSEMBLIES. ROTATE THE TOP LOCKNUT (B) UNTIL THE SPRINGS ARE PROPERLY ADJUSTED.
- C. BE SURE TO TIGHTEN THE BOTTOM NUT (A) SECURELY ON BOTH ASSEMBLIES TO PREVENT LOOSENING OF THE ASSEMBLIES.

## Spring Assembly



## CONTROLLER OPERATION:



Turn the controller on by pressing the on/off button once. The light above will then illuminate green. To turn off press the on/off button again.

To operate the Left Wing press the S1 button once. The number 1 will blink in the digital display. The wing can now be extended or retracted using the skidsteer hydraulic controls. Press the S1 button again to turn off.

To operate the Right Wing press the S2 button once. The number 2 will blink in the digital display. The wing can now be extended or retracted using the skidsteer hydraulic controls. Press the S2 button again to turn off.

To operate both wings together as VEE and Scoop, press the S1/S2 button. The number 1 and 2 will alternate blinking in the digital display. The wings can now be extended or retracted together using the skidsteer hydraulic controls. Press the S1/S2 button again to turn off.

The plow assembly is raised up and down by the skidsteer bucket controls.