

Standard Operating System with Hands Free Plowing  
TV-70 12V Hydraulic Unit  
Includes 54220, 54650, 54685, 54750, 54785,  
54800 and 54885

Pro Mount Plow Attachment System



735 Beta Dr. Unit H Mayfield, Ohio 44143  
[meyerproducts.com](http://meyerproducts.com)

©Aebi Schmidt Group, 2026

Form No. 1-1271 February 2026

**NOTICE:** Meyer Products LLC reserves the right, under its continuing product improvement program, to change construction, design, details, specifications, and prices without notice or without incurring any obligation. Meyer Products LLC assumes no responsibility for installations not made in accordance with these instructions.

## Table of Contents

General Information .....	1
Black Iron Parts Lists .....	2-5
Moldboard Parts List .....	6-7
Standard Operating System Wiring .....	8
Plow Assembly & Adjustments .....	9
Hydraulics .....	10-12
Mounting Plow .....	13
Dismounting Plow .....	14
Pre-Delivery Inspection .....	15
Registration .....	15

Please visit our website to find our most updated technical information; including installation instructions, user manuals, parts diagrams, EZ Troubleshooter, and more.

Please see your owner's manual for Pre-Season, Post-Season, and General Maintenance.

[meyerproducts.com](http://meyerproducts.com)

## **CAUTION** GENERAL INFORMATION

Always disconnect battery prior to installation.

SAFETY PRECAUTIONS should be used when Quik Lift® is in a RAISED position.

LOWER plow to the ground when vehicle is PARKED.

OVERHAUL and SERVICE information is covered on separate instructions.




Note:

1. Connect ground cable to negative side of battery for a solid connection to ground.
2. **CAUTION** Route all cables away from moving engine parts, Manifolds, and sharp sheet metal.
3. For weather protection, coat all connections with Meyer Dielectric Grease Part No. 15632
4. The vehicle must be equipped with a "Heavy Duty Battery" (70 Amp, Hr. Min.), 550 C.C.A. and "Alternator" (60 Amp. Min.) to obtain maximum performance.
5. Follow these instructions explicitly. Warranty does not apply to a Meyer product which has been negligently or improperly assembled or installed.

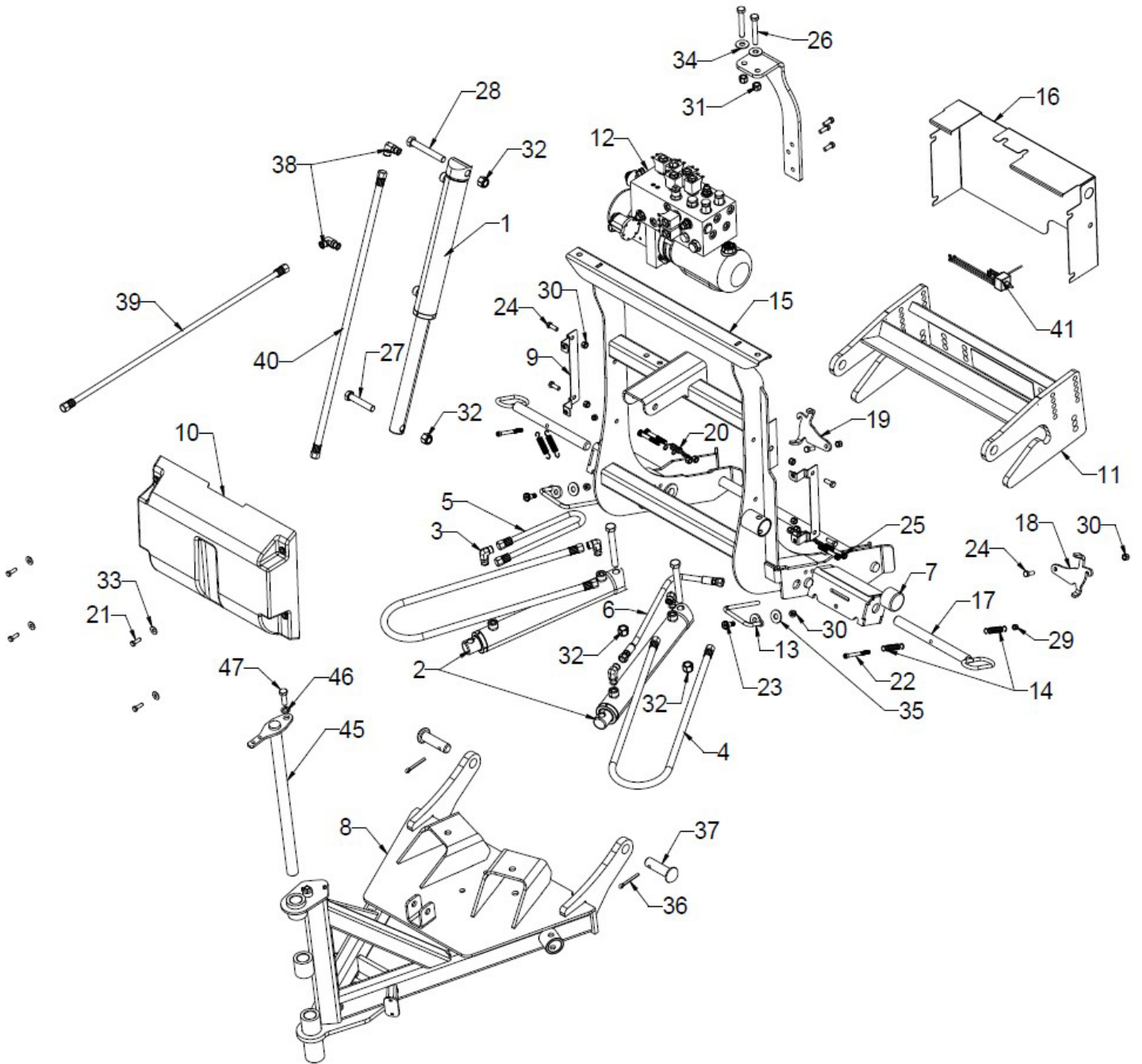
### Tool List for Plow Assembly

Pliers	9/16" socket
1/2" socket	3/4" box wrench
1/2" box wrench	15/16" box wrench
9/16" box wrench	15/16" deep well socket

### TORQUE CHART FOOT

Bolt Nut Size	Gr. 2 	Gr. 5 	Gr. 8 
1/4-20	4-5		
5/16-18	9-11		
3/8-16	17-20	26-29	
7/16-14		42-46	60-66
1/2-13		64-72	99-100
5/8-11		127-141	179-198

Super-V3 Light Duty: 54220



## Black Iron Parts List

### Super-V3 Light Duty: 54220

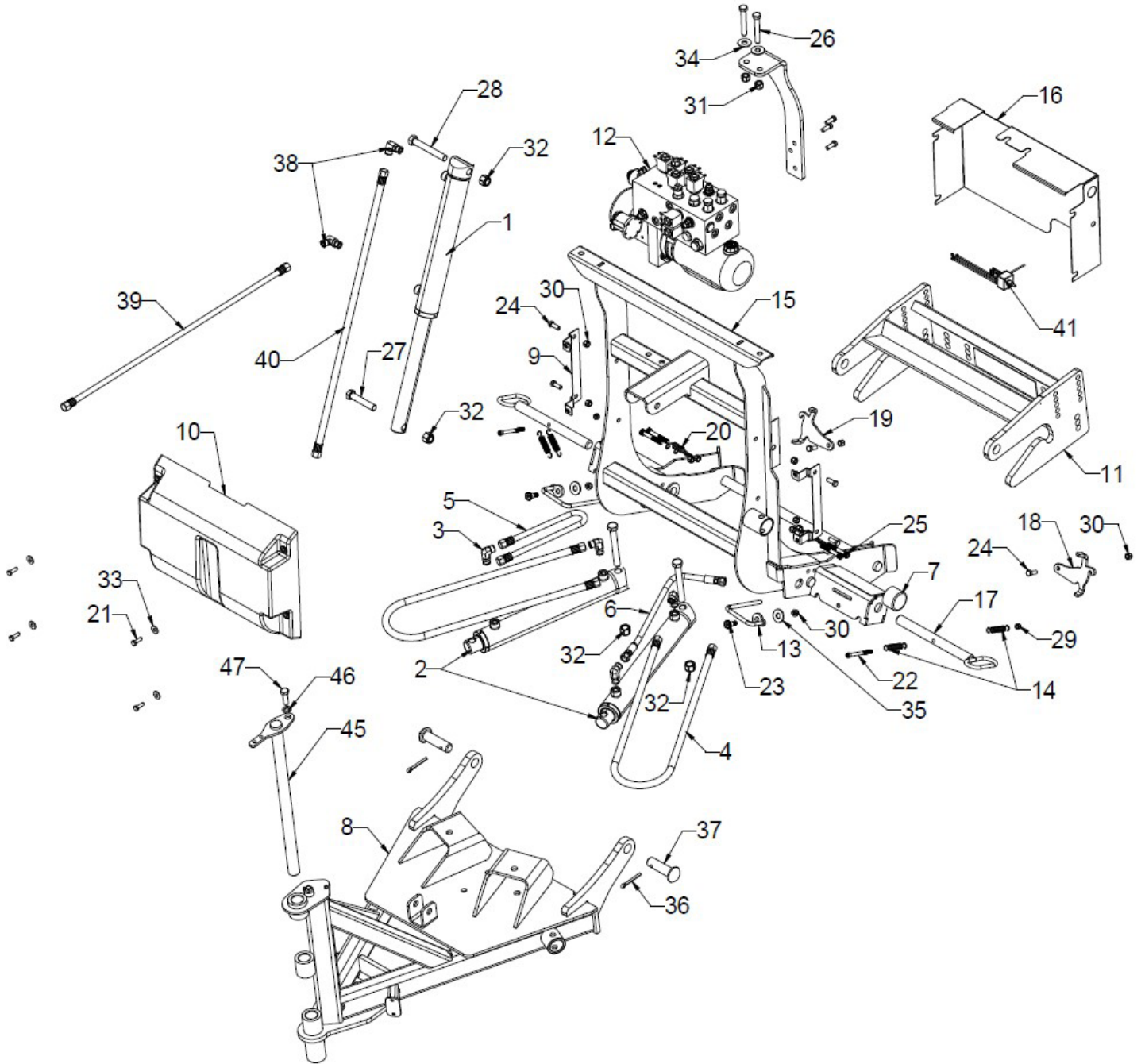
Item	Part #	QTY	Description
	54220	1	Super V3 Light Duty
1	05757	1	• Lift Ram (1.13 x 12")
	07912	1	• R.H. Ram Assy with Hose & Fttg
2	05756	1	•• Angle Ram DA 1.25 x 12 SAE6
3	22866	2	•• SAE Mx3/8 90 Degree Elbow
4	22885	1	•• Hose 1/4 x 54"
5	23077	1	••Hose 3/8" x 48"
	07919	1	• L.H. Ram Assy with Hose & Fttg
2	05756	1	•• Angle Ram DA 1.25 x 12 SAE6
3	22866	2	•• SAE Mx3/8 90 Degree Elbow
6	22921	1	•• Hose 1/4 x 38" FEM ORF SWVL
5	23077	1	•• Hose 3/8" x 48"
7	11844	1	• Receiver Tube Cap 2" ID
8	14454	1	• A-Frame
9	14290	2	• Horiz Hyd Cover BRKT
10	14596	1	• Horiz Hyd FRT CVR T-73
11	14700	1	• Adjustable Clevis
12	16034	1	• Hyd TV-70 Horiz 12V (Unit Only)*
13	18969	2	• Spring Handle
14	18973	4	• Spring
15	18975	1	• Lift Frame
16	18982	1	• Rear Cover
17	18992	2	• Handle Pin Assy
18	18993	1	• Safety Latch L.H.
19	18994	1	• Safety Latch R.H.
20	18995	2	• Pin Spring
21	20027	4	• Bolt H 5/16 -18 x 1 G2 ZN
22	20045	2	• SCO. HD. C.S. 5/16-18 x 3 1/2
23	20046	2	• Shoulder Bolt 3/8 -16
24	20049	6	• Bolt H 3/8 x 1 G2 ZN
25	20053	4	• SHCS 3/8 - 16 x 2
26	20102	2	• Bolt H 1/2 -13 x 3 1/4 G5 ZN
27	20146	1	• Bolt H 5/8 11 x 3 1/4 G5
28	20150	5	• Bolt H 5/8-11 x
29	20304	2	• Locknut ESNA 5/16-18 ZN PL
30	20314	12	• Locknut ESNA ZN PL
31	20307	2	• Locknut ESNA 1/2-13 ZN PL
32	20309	10	• Lockout ESNA 5/8-11 ZN PL
33	20352	4	• Washer Flat 5/16 ZN
34	20355	2	• Washer Flat 1/2 ZN
35	20365	2	• Washer Flat 1/2 Nylon
36	20420	2	• PIN COT 1/4 x 2 Runner Assy ZN
37	22436	2	• 1" DIA PIN 1 x 3

Item	Part #	QTY	Description
38	22866	2	• Elbow 90, 3/8 SAE-MX 3/8 ORF-M
39	22885	1	• Hose 1/4" x 54", FEM ORF SWVL
40	22941	1	• Hose 3/8" x 33", FEM ORF SWVL
41	23089	1	• Toggle Harness Assy
42	15244	1	• Hyd Diode Deutsch Conn
	15276	1	• S1 Power Wire
	15277	1	• TV70 Ground Harness
43	12548	1	• Top Deflector
44	13724	1	• Deflector Brace
45	14613	2	• Top Deflector Strap SV3 LD 7.5
46	13207	1	• Pivot Pin SV3 LD 7.5
47	20329	1	• Lock Washer 1/2"
48	20095	1	• Bolt H 1/2-13 x 1-1/2" G5
49	20352	13	• Flat Washer 5/16"
50	20304	17	• Locknut 5/16-18
51	20027	12	• Bolt H 5/16-18 x 1" G5
	23039	1	• Plow Side Harness SOS
	16643	1	• Accessory Box
52	09917	1	•• Plow Markers Kit (2)
53	22022	1	•• Jack Stand (Crank) SOS EZ
54	23025	1	•• Standard OP SYS Power Harness
55	23059	1	•• SOS HFP Vehicle Harness

Parts indented are included in the carton, bag or assembly under which they are indented.

Black Iron Parts List

Super-V3: 54650, 54750, 54800



## Black Iron Parts List

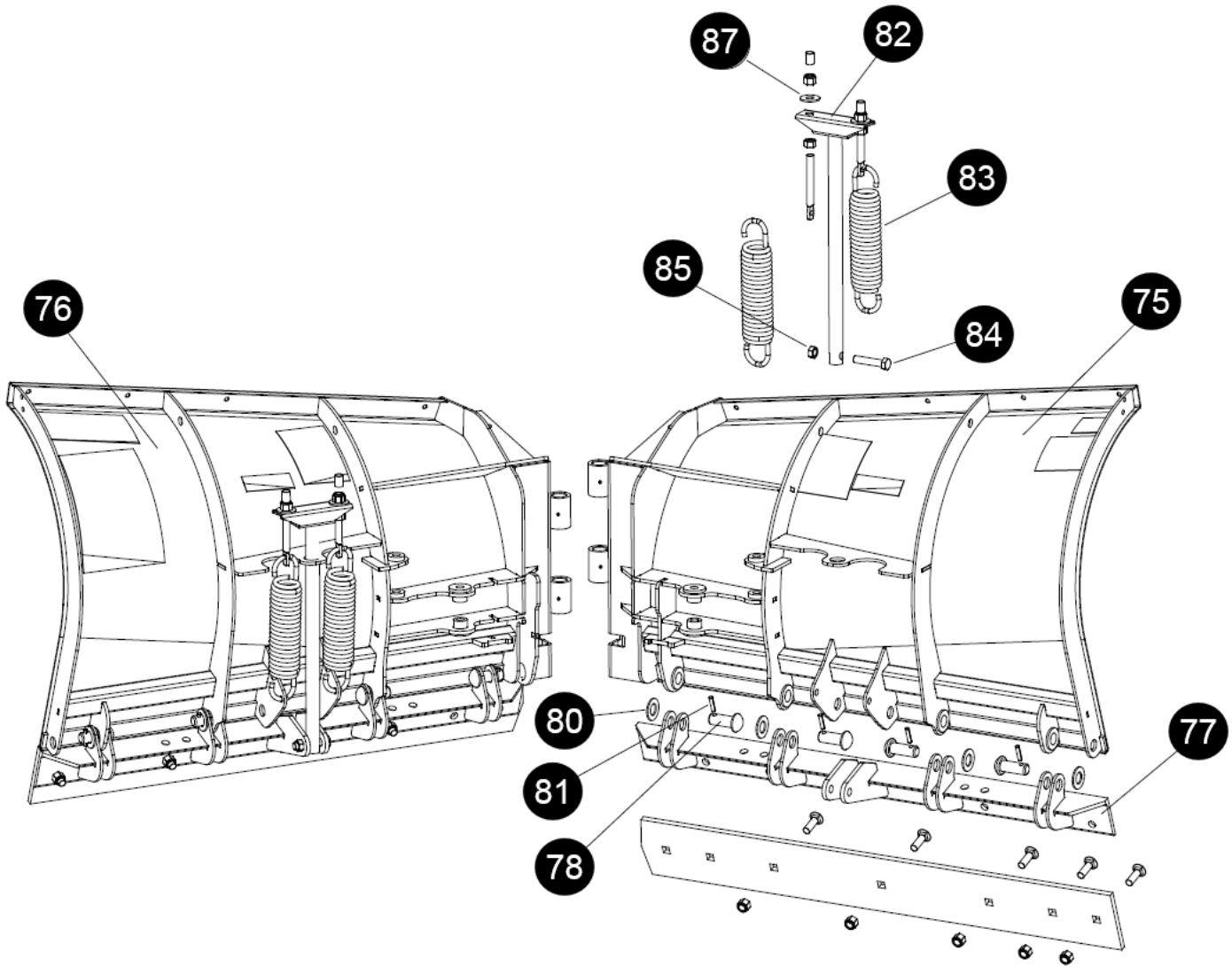
### Super-V3: 54650, 54685, 54750, 54785, 54800 & 54885

Item	Part #	QTY	Description
	-----	1	Super V3
1	05757	1	• Lift Ram (1.13 x 12")
	07850	1	• R.H. Ram Assy with Hose & Fttg
2	05755	1	•• Angle Ram DA 1.50 x 12 SAE6
3	22866	2	•• SAE Mx3/8 90 Degree Elbow
4	22885	1	•• Hose 1/4 x 54"
5	23077	1	••Hose 3/8" x 48"
	07845	1	• L.H. Ram Assy with Hose & Fttg
2	05755	1	•• Angle Ram DA 1.50 x 12 SAE6
3	22866	2	•• SAE Mx3/8 90 Degree Elbow
6	22921	1	•• Hose 1/4 x 38" FEM ORF SWVL
5	23077	1	•• Hose 3/8" x 48"
7	11844	1	• Receiver Tube Cap 2" ID
8	14473	1	• A-Frame
9	14290	2	• Horiz Hyd Cover BRKT
10	14596	1	• Horiz Hyd FRT CVR T-73
11	14700	1	• Adjustable Clevis
12	16034	1	• Hyd TV-70 Horiz 12V (Unit Only)*
13	18969	2	• Spring Handle
14	18973	4	• Spring
15	18975	1	• Lift Frame
16	18982	1	• Rear Cover
17	18992	2	• Handle Pin Assy
18	18993	1	• Safety Latch L.H.
19	18994	1	• Safety Latch R.H.
20	18995	2	• Pin Spring
21	20027	4	• Bolt H 5/16 -18 x 1 G2 ZN
22	20045	2	• SCO. HD. C.S. 5/16-18 x 3 1/2
23	20046	2	• Shoulder Bolt 3/8 -16
24	20049	6	• Bolt H 3/8 x 1 G2 ZN
25	20053	4	• SHCS 3/8 - 16 x 2
26	20102	2	• Bolt H 1/2 -13 x 3 1/4 G5 ZN
27	20146	1	• Bolt H 5/8 11 x 3 1/4 G5
28	20150	3	• Bolt H 5/8-11 x 4-1/2" G5
29	20304	2	• Locknut ESNA 5/16-18 ZN PL
30	20314	12	• Locknut ESNA 3/8-16 ZN PL
31	20307	2	• Locknut ESNA 1/2-13 ZN PL
32	20309	4	• Lockout ESNA 5/8-11 ZN PL
33	20352	4	• Washer Flat 5/16 ZN
34	20355	2	• Washer Flat 1/2 ZN
35	20365	2	• Washer Flat 1/2 Nylon
36	20420	2	• PIN COT 1/4 x 2 Runner Assy ZN
37	22436	2	• 1" DIA PIN 1 x 3

Item	Part #	QTY	Description
38	22866	2	• Elbow 90, 3/8 SAE-MX 3/8 ORF-M
39	22885	1	• Hose 1/4" x 54", FEM ORF SWVL
40	22941	1	• Hose 3/8" x 33", FEM ORF SWVL
41	23089	1	• Toggle Harness Assy
	15276	1	• S1 Power Wire
	15277	1	• TV70 Ground Harness
42	15244	1	• Hyd Diode Deutsch Conn
43	12536	1	• Top Deflector
44	13724	1	• Deflector Brace
45	13207	1	• Pivot Pin SV3 LD 7.5
46	20329	1	• Lock Washer 1/2"
47	20095	1	• Bolt H 1/2-13 x 1-1/2" G5
48	20352	11	• Flat Washer 5/16"
49	20304	9	• Locknut 5/16-18
50	20028	12	• Bolt H 5/16-18 x 1-1/4" G5
	23039	1	• Plow Side Harness SOS
	16643	1	• Accessory Box
51	09917	1	•• Plow Markers Kit (2)
52	22022	1	•• Jack Stand (Crank) SOS EZ
53	23025	1	•• Standard OP SYS Power Harness
54	23059	1	•• SOS HFP Vehicle Harness
55	23067	1	•• Nite Saber (LED 12V) Plow Light Kit

Parts indented are included in the carton, bag, or assembly under which they are indented.

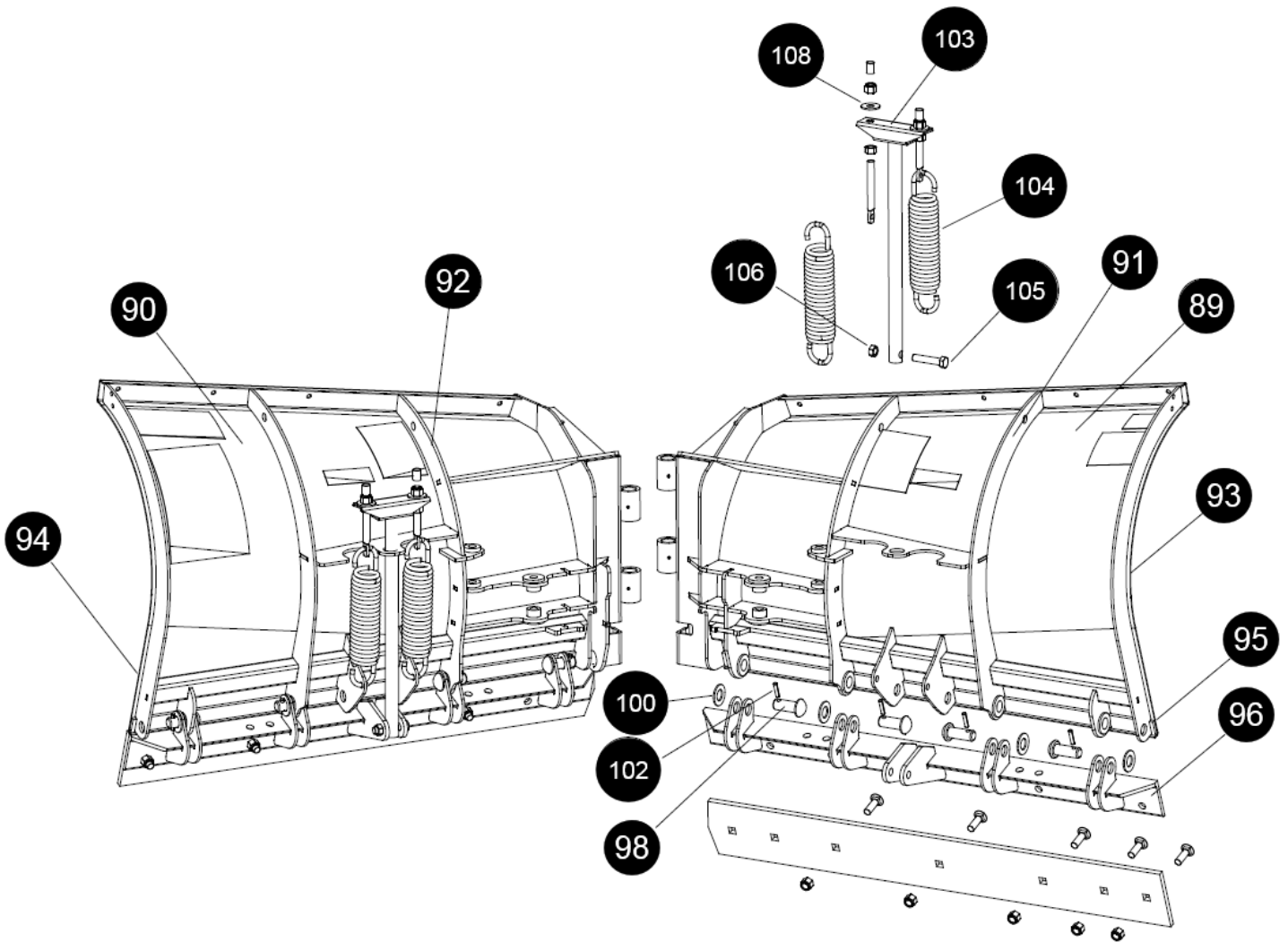
# Moldboard Parts List



Item	SV3LD	SV3 8' 6"	SV3 9' 6"	SV3 10' 6"	QTY	Description
74	09536	09521	09522	09237	1	R.H. & L.H. Wing
75	09530	09518	09520	09508	1	• R.H. Wing
76	09531	09517	09519	09509	1	• L.H. Wing
77	14530	14170	14180	14151	2	•• Trip Edge Weld
78	22438	22438	22438	22438	8	•• 1" x 2-1/2" Pin
79	-----	-----	-----	22436	2	•• 1" x 3-3/8" Pin
80	21262	21262	21262	21262	8	•• Flatwasher 1"
81	22945	22945	22945	22945	8	•• Roll Pin 5/16" x 1.5"
82	84285	84285	84285	84285	2	•• T-Bar Weldment
83	07215	07215	07215	07215	4	•• Trip Spring
84	20145	20145	20145	20145	2	•• Bolt H 5/8-11 x 3" Gr. 5
85	20318	20318	20318	20318	2	•• Locknut 5/8-11
86	20357	20357	20357	20357	4	•• Flatwasher 5/8"
87	09124	09124	09124	09124	4	•• Eyebolt w/Locknuts and Cap

Parts indented are included in the assembly under which they are indented.

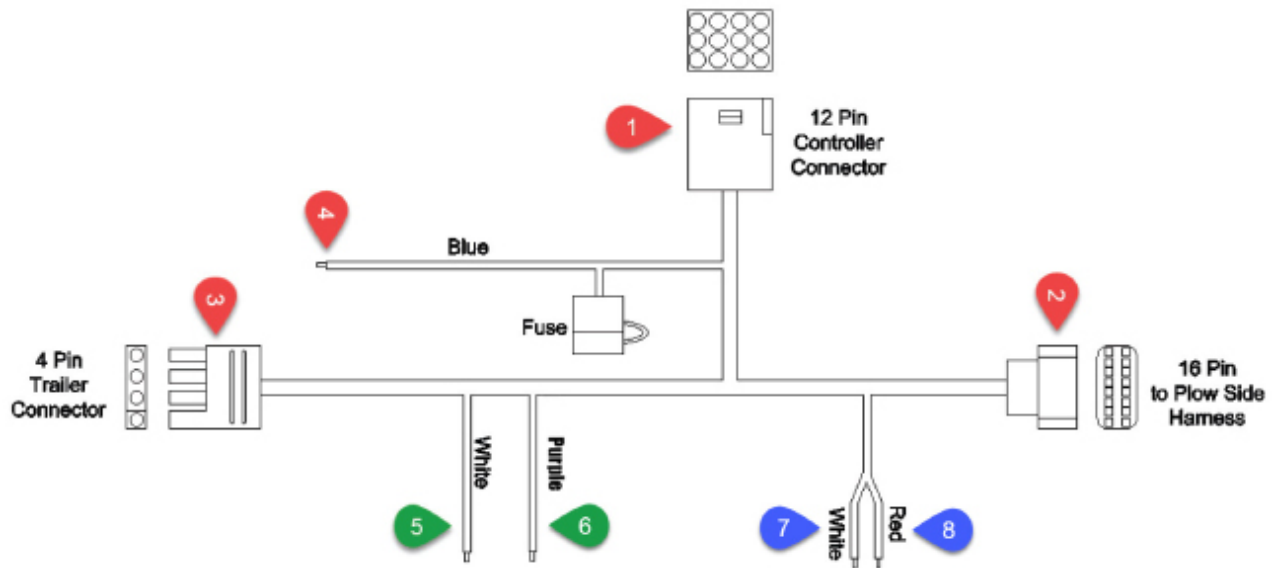
# Moldboard Parts List



Item	Stainless 8' 6"	Stainless 9' 6"	Stainless 10' 6"	QTY	Description
88	09533	09534	09535	1	R.H. & L.H. Wing pkg
89	09524	09526	09528	1	• SS R.H. Wing
90	09525	09527	09529	1	• SS L.H. Wing
91	14494	14496	14498	1	•• RH Moldboard Weld
92	14493	14495	14497	1	•• LH Moldboard Weld
93	14059	14063	14131	1	•• RH Stainless Steel Sheet
94	14060	14064	14132	1	•• LH Stainless Steel Sheet
95	14098	14118	14150	2	•• Bottom Mount Plate
96	14170	14180	14151	2	•• Trip Edge Weld
97	20307	20307	20307	10	•• Locknut ½-13
98	22438	22438	22438	8	•• 1" x 2-1/2" Pin
99	-----	-----	22436	2	•• 1" x 3-3/8" Pin
100	21262	21262	21262	8	•• Flatwasher 1"
101	21943	21943	21943	10	•• Bolt C ½-13 x 1-3/4"
102	22945	22945	22945	8	•• Roll Pin 5/16" x 1.5"
103	84285	84285	84285	2	•• T-Bar Weldment
104	07215	07215	07215	4	•• Trip Spring
105	20145	20145	20145	2	•• Bolt H 5/8-11 x 3" Gr. 5
106	20318	20318	20318	2	•• Locknut 5/8-11
107	20357	20357	20357	4	•• Flatwasher 5/8"
108	09124	09124	09124	4	•• Eyebolt w/Locknuts and Cap

Parts indented are included in the assembly under which they are indented.

## Wiring Harnesses & Controller



### Vehicle Side Harness

- 1) Route the 12 pin connector into vehicle's cab and plug into controller.
- 2) Route the 16 pin connector to the front of the vehicle and plug into the plow side harness.
- 3) Route the 4 pin connector to rear of vehicle and plug into vehicle's trailer harness using the trailer adapter harness. Use cable ties to ensure the harness is secured to the vehicle's frame.



Trailer Adapter Harness

- 4) The BLUE wire will connect to the vehicle's keyed accessory circuit. This is to ensure the plow turns on and off with the vehicle's ignition.

*The following step is for 2015 & later GM vehicles with an alternator relay...*

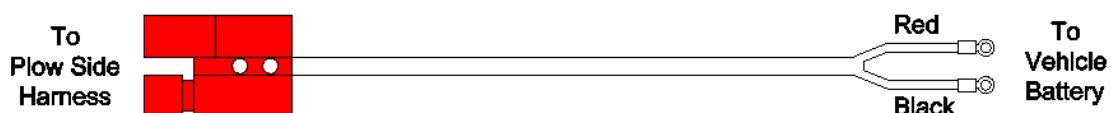
- 5) The WHITE wire will connect to 2015 & Later GM vehicles with alternator relay. See Meyer Products Service Bulletin SB252.
- 6) The PURPLE wire will connect to the black /violet wire of 2015 and later models of RAM 2500, 3500, 4500, and 5500 models. See mount instructions for further detail.

*The following two steps are optional and may be enforced by local law which requires your vehicle lights to be off while your plow lights are on and vice versa...*

- 6) Connect the RED to the HIGH beam function.
- 7) Connect the WHITE to the LOW beam function.

### Power Harness (23025)

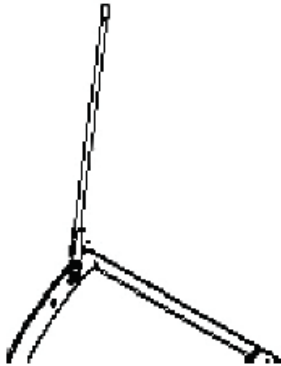
- 1) Route through the vehicle's grille.
- 2) Connect the terminals to the vehicle's battery. Red to Positive and Black to Negative.



# Plow Assembly & Adjustments

## Plow Markers

Attach Plow Markers to moldboard using 5/16-18 x 1" Bolt, 5/16" Flatwasher, and 5/16-18 Locknut.



## Hydraulic Fluid Level

Top off the unit to the fill line on the reservoir with Meyer M-1 Hydraulic Fluid.

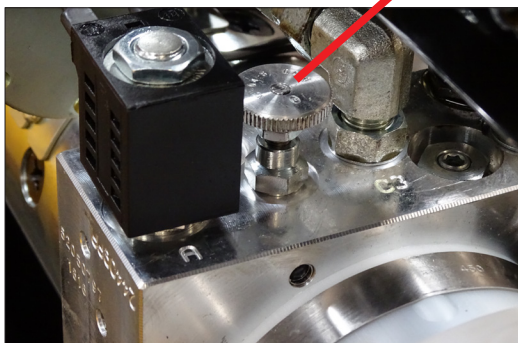
NOTE: Proper fluid level is to the fill line on the reservoir for the E73. It must be checked with the lift cylinder fully retracted.



## Drop Speed Adjustment

E73 Drop Speed Adjustment: Loosen jam nut and turn knob clockwise to slow the drop of the plow and counter clockwise to speed the drop of the plow. Tighten jam nut.

Drop Speed Adjustment



## Nite Saber LED Lights

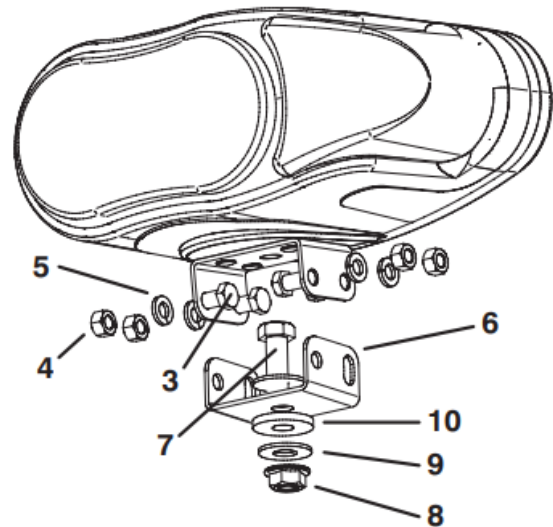
See separate Nite Saber LED instructions for further information.

Mount the lights as shown below.

Connect both male ends from the snow plow light to the female ends on the Plow Side Harness. Ensure all wiring harnesses are secured against the lift frame.

Check snow plow lights and blinkers to ensure proper operation. If operating in reverse (i.e. driver side blinking instead of passenger side), reverse the harness connections.

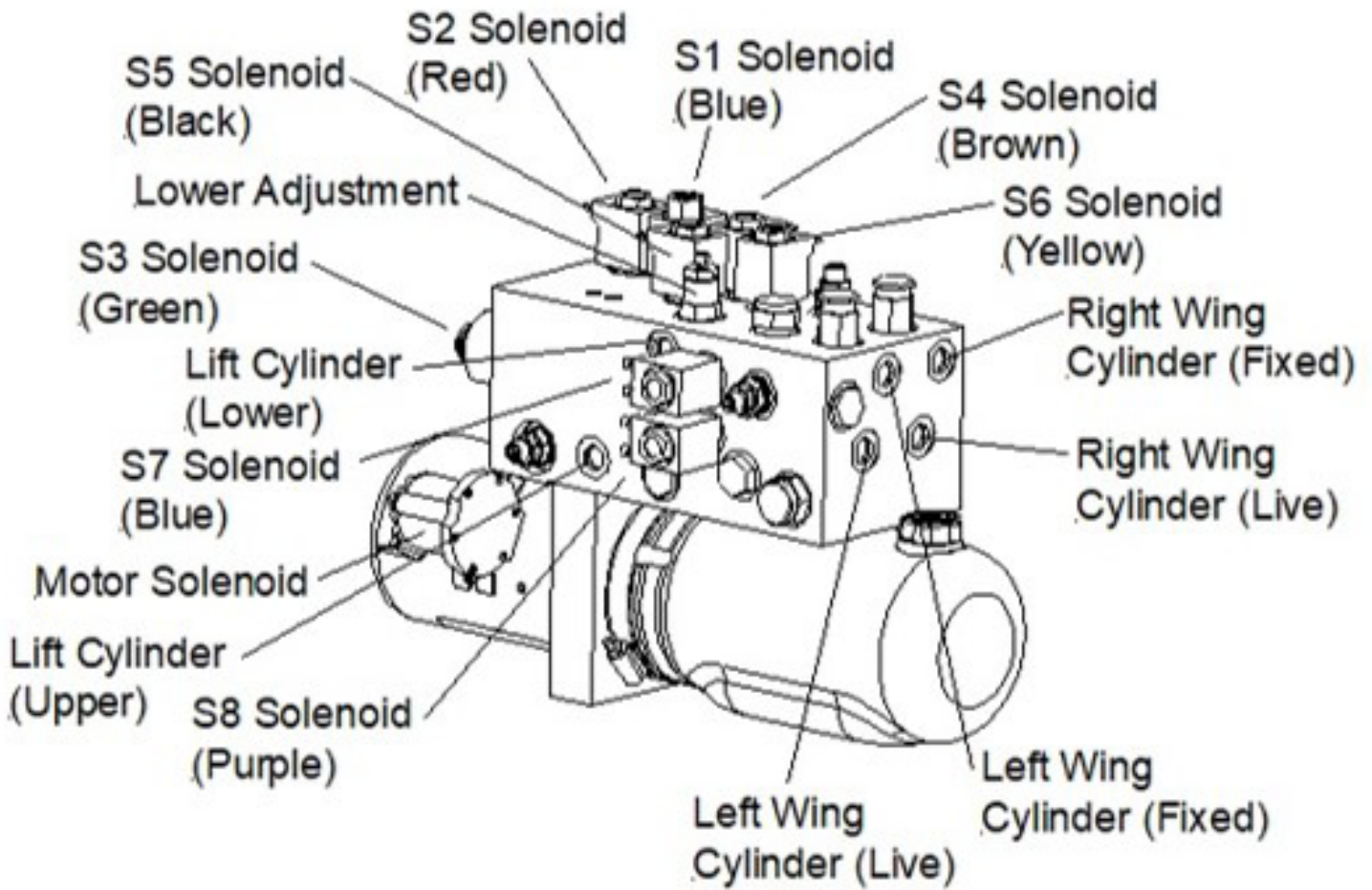
Note: All electrical connections should have both ends coated with a dielectric grease (Meyer Part # 15632) prior to final installation. This will ensure a good connection and help in preventing corrosion.



## Nite Saber LED Parts List

Item	Part	QTY	Description
1	23067	1	Nite Saber LED Kit
-	23066	1	• Passenger Side LED
-	23065	1	• Driver Side LED
2	08126	1	• Hardware Bag
3	----	8	•• Hex Bolt 3/8" x 3/4", SS
4	----	8	•• Hex Nut 3/8", SS
5	----	8	•• Lock Washer 3/8", SS
6	----	2	•• Metal Bracket, Bottom
7	----	2	•• Bolt 1/2"- 13 x 1 1/12", SS
8	----	2	•• Hex Lock Nut 1/2" - 13, SS
9	----	4	•• Flat Washer 1/2", SS
10	----	2	•• Neoprene Grommet 1/2"

Parts indented are included in the carton, bag, or assembly under which they are indented.



TV-70	Mount	Dis-Mount	Raise	Lower	Float	Angle Left	Angle Right	LW-Ext	LW-Ret	RW-Ext	RW-Ret	Vee	Scoop
Motor	X	X	X	X		X	X	X	X	X	X	X	X
S1	X	X	X	X		X	X	X	X	X	X	X	X
S2	X			X		X		X		X			X
S3	X	X	X	X	X								
S4		X											
S5						X	X	X	X	X	X	X	X
S6						X	X						
S7						X	X			X	X		
S8								X	X				

## TV-70 Hydraulics Testing Tips

*\*Before any troubleshooting is started, make certain the following conditions are met.*

1. CHECK TO ENSURE THE POWER ANGLING CYLINDERS ARE INSTALLED CORRECTLY.
3. THE SOLENOID COILS MUST BE ON THEIR PROPER VALVE: S1-COIL (BLUE AND BROWN WIRE), S2-COIL (RED AND BROWN WIRE), S3-COIL (GREEN AND BROWN WIRE), THE AND S4-COIL (BROWN AND BROWN WIRE), S5-COIL (BLACK AND BROWN), S6-COIL (YELLOW AND BROWN), S7-COIL (BLUE AND BROWN), AND S8-COIL (PURPLE AND BROWN).
4. THE ELECTRICAL INSTALLATION MUST HAVE BEEN MADE ACCORDING TO INSTALLATION INSTRUCTIONS SUPPLIED BY MEYER PRODUCTS LLC.

**\*\*Testing** **CAUTION** *Keep a Safe Distance from Front of Plow When Performaing Maintenance to Avoid Injury.*

Many tests do not require removing the Power Unit from the vehicle.

1. Use a screwdriver or other small tool to check for magnetism of solenoid coils (S1, S2, S3, S4, S5, S6, S7 and S8). Place the tool on the coil and have an assistant operate the switch. You should feel magnetic attraction.
2. Use a test light or volt meter to determine whether there is power at harness or TV-73 controller.
3. When determining Amp draw of motor, always obtain the highest value possible, i.e., at maximum raise or angle with motor running.
4. Proper rotation for motor is indicated by an arrow on the top of the pump.
5. The pump shaft (all models) of a good pump can be turned smoothly using two fingers. If it cannot be turned easily, the pump is too tight and must be replaced.
6. Pump pressure can be measured at an angle hose (note pressure at full angle).
7. If hydraulic system is contaminated with oil or a substance other than Meyer Hydraulic Fluid, it is recommended that the hydraulic unit, power angling rams and hoses be drained and flushed clean with Meyer M-2 Flush Fluid. The system should then be refilled with Meyer M-1 Fluid.

## TV-70 Hydraulic Trouble Shooting Guide

*\*\*\*THESE CHARTS ARE INTENDED TO BE USED AS AN AID IN DIAGNOSING MEYER HYDRAULIC POWER UNITS. THEY ARE NOT A SUBSTITUTE FOR FACTORY TRAINING AND EXPERIENCE. BE CERTAIN TO READ THE GENERAL INFORMATION AND TESTING TIPS SECTIONS BEFORE ATTEMPTING ANY TROUBLESHOOTING. ADDITIONAL DETAILED INFORMATION AS WELL AS ALL ELECTRICAL SCHEMATICS MAY BE FOUND IN SERVICE MANUALS AT [WWW.MEYERPRODUCTS.COM](http://WWW.MEYERPRODUCTS.COM).*

Condition	Possible Cause	Correction
Plow will not hold in angled position	<ol style="list-style-type: none"> <li>1. Air in cylinders and hoses.</li> <li>2. Leaking dual pilot check valve.</li> <li>3. Leaking crossover relief valve.</li> <li>4. Crossover relief valve opening at too low a pressure.</li> </ol>	<ol style="list-style-type: none"> <li>1. Bleed cylinders and hoses.</li> <li>2. Replace pilot check valve.</li> <li>3. Replace crossover relief valve.</li> <li>4. Replace crossover relief valve</li> </ol>
Motor does not operate	<ol style="list-style-type: none"> <li>1. Discharged or defective battery.</li> <li>2. Loose/corroded electrical connections.</li> <li>3. Inoperative starter solenoid.</li> <li>4. Malfunctioning control switch.</li> <li>5. Malfunctioning motor.</li> </ol>	<ol style="list-style-type: none"> <li>1. Recharge or replace battery.</li> <li>2. Clean and tighten electrical connections.</li> <li>3. Replace starter solenoid.</li> <li>4. Replace control switch.</li> <li>5. Repair or replace motor.</li> </ol>
Plow does not lower	<ol style="list-style-type: none"> <li>1. No current to "S3" coil. (green and brown wire)</li> <li>2. "S3" cartridge jammed in closed position.</li> <li>3. Inoperative "S3" coil. (green and brown wire)</li> </ol>	<ol style="list-style-type: none"> <li>1. Locate malfunction and repair.</li> <li>2. Clean or replace "S3" cartridge.</li> <li>3. Replace "S3" coil. (green and brown wire)</li> </ol>
Plow creeps down	<ol style="list-style-type: none"> <li>1. Leaking "S3" cartridge.</li> <li>2. Leaking "S3" cartridge O-ring.</li> <li>3. Leaking DA Lift Cylinder.</li> </ol>	<ol style="list-style-type: none"> <li>1. Clean or replace "S3" cartridge.</li> <li>2. Replace O-ring.</li> <li>3. Replace DA Lift Cylinder</li> </ol>

## 16034 TV70 Hydraulics Trouble Shooting

Condition	Possible Cause	Correction
Plow does not lift or lifts slowly - motor operates.	<ol style="list-style-type: none"> <li>1. Low hydraulic fluid level.</li> <li>2. Discharged battery.</li> <li>3. Bad "S6" cartridge.</li> <li>4. No current to "S6" coil.</li> <li>5. Malfunctioning motor.</li> <li>6. Malfunctioning pump.</li> </ol>	<ol style="list-style-type: none"> <li>1. Add fluid to proper level</li> <li>2. Recharge battery.</li> <li>3. Replace "S6" cartridge.</li> <li>4. Locate malfunction and repair.</li> <li>5. Repair or replace motor.</li> <li>6. Replace pump.</li> </ol>
Plow does not lower.	<ol style="list-style-type: none"> <li>1. Bad "S1" or "S3" cartridge.</li> <li>2. No current to "S1" or "S3" coil.</li> <li>3. Bad "S1" or "S3" coil.</li> </ol>	<ol style="list-style-type: none"> <li>1. Replace "S1" or "S3" cartridge.</li> <li>2. Locate malfunction and repair.</li> <li>3. Replace "S1" or "S3" coil.</li> </ol>
Plow does not angle left or angle right.	<ol style="list-style-type: none"> <li>1. Bad "S2", "S5", "S6", "S7" cartridge.</li> <li>2. No current to "S2", "S5", "S6" or "S7" coil.</li> <li>3. Bad "S2", "S5", "S6" or "S7" coil.</li> </ol>	<ol style="list-style-type: none"> <li>1. Replace "S2", "S5", "S6" or "S7" cartridge.</li> <li>2. Locate malfunction and repair.</li> <li>3. Replace "S2", "S5", "S6" or "S7" coil</li> </ol>
Left or Right wing does not retract	<ol style="list-style-type: none"> <li>1. Bad "S1", "S5", "S7", "S8" cartridge.</li> <li>2. No current to "S1", "S5", "S7" or "S8" coil.</li> <li>3. Bad "S1", "S5", "S7" or "S8" coil</li> </ol>	<ol style="list-style-type: none"> <li>1. Replace "S1", "S5", "S7" or "S8" cartridge.</li> <li>2. Locate malfunction and repair.</li> <li>3. Replace "S1", "S5", "S7" or "S8" coil.</li> </ol>
Left or Right wing does not extend	<ol style="list-style-type: none"> <li>1. Bad "S1", "S2", "S5", "S7", "S8" cartridge.</li> <li>2. No current to "S1", "S2", "S5", "S7" or "S8" coil.</li> <li>3. Bad "S1", "S2", "S5", "S7" or "S8" coil.</li> </ol>	<ol style="list-style-type: none"> <li>1. Replace "S1", "S2", "S5", "S7" or "S8" cartridge.</li> <li>2. Locate malfunction and repair.</li> <li>3. Replace "S1", "S2", "S5", "S7" or "S8" coil.</li> </ol>
Vee or Scoop does not work	<ol style="list-style-type: none"> <li>1. Bad "S1", "S2" or "S5" cartridge.</li> <li>2. No current to "S1", "S2" or "S5" coil.</li> <li>3. Bad "S1", "S2" or "S5" coil</li> </ol>	<ol style="list-style-type: none"> <li>1. Replace "S1", "S2" or "S5" cartridge.</li> <li>2. Locate malfunction and repair.</li> <li>3. Replace "S1", "S2" or "S5" coil</li> </ol>

## Mounting Plow

### NOTE: Steps for Mounting Plow with T-73 Hydraulic Unit Only

- Next Generation Plow Attachment System
- Spring Tension Release Pins Quickly, Latch with the Turn of the Handle.
- Mount/Dismount from Oneside of the Plow.
- Hydraulic Switch Replaces the Classic Manual Design for Easy Mount/Dismount.
- A Solid Cylinder in place of Lift Chains Stays Rigid during use Minimizing "Bouncing" That can lead to Plow Truck Damage.
- Conveniently Stores Jack-Stand for use Whenever you Need It.

"Ready to Plow in 3 Steps" -In less than 50 Seconds.

- Connect Electrical Components
- Flip the Handles to Lock the Pins
- Flip the Hydraulic Switch
- \*Remove Jack-Stand from the A-Frame/Connect to Lift Frame for Accesible Storage.

## -Mounting Process-



\* Prior to Mounting Plow to Vehicle Assure the Jack-Stand is Secured to the A-frame.



\*\* After Mounting Steps are Complete, Remove the Jack-Stand from the A-Frame & Secure it to the Lift Frame.

## 3 Step Process...



1.) Connect All Electrical Components.

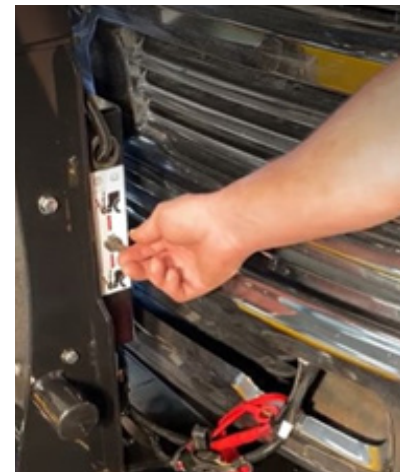


\*Open/Unlocked



\*Locked

2.) Flip the Handles to Lock the Pins. Pushing Down & Toward's Lift Frame to Lock Positon.



3.) Flip the Hydraulic Switch. Toggle Up to Mount.

## *-Dismounting Process-*



*\* Prior to Dismounting Plow from Vehicle  
Remove the Jack-Stand from the Lift  
frame, & Secure it to the A-Frame.*



*\*\* After Dismounting Steps are Complete, the  
Plow will be Parked with Jack-Stand Attached to  
A-Frame until Ready for use again.*



*\*Locked*



*\*Open/Unlocked*

*1.) Flip the Handles to Unlock the Pins.  
Swinging Up & Away from Lift Frame to  
Unlock Position.*



*2.) Flip the Hydraulic Switch.  
Toggle Down to Dismount.*



*3.) Disconnect All Electrical Components.*

## PRE-DELIVERY INSPECTION

Vehicle Make: \_\_\_\_\_

Vehicle Model: \_\_\_\_\_

Vehicle Year: \_\_\_\_\_

Vehicle VIN#: \_\_\_\_\_

Vehicle FGAWR: \_\_\_\_\_

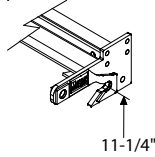
Installing Company: \_\_\_\_\_

Hydraulic Serial Number: \_\_\_\_\_

Moldboard Serial Number: \_\_\_\_\_

- All bolts torqued to specification
- Suspension interference
- Clevis height in inches \_\_\_\_\_
- Trip springs adjusted
- Lift Chain Adjusted
- Check for hydraulic fluid leaks
- Hydraulic fluid Level
- Dielectric grease applied to ALL electrical connections
- All wires secured
- Plow Stops Adjusted (plow cannot bump hyd. unit)

Clevis height



- Controller Operation
- Plow Operation Up
- Plow Operation Left
- Plow Operation Right
- Plow Operation Down
- Plow Light Blinker Left & Right Operation
- Plow Light Low & High Beam Operation
- Plow Lights Adjusted
- Plow Mount/Dismount reviewed with Customer
- Plow Operation reviewed with Customer
- Warranty/Registration/Owners Manual

Notes:


Inspected By: \_\_\_\_\_ W.O.#: \_\_\_\_\_ Date: \_\_\_\_\_

Customer Signature: \_\_\_\_\_

### Serial Number Decal Locations

Moldboard serial tags are attached to the back of the moldboard, the outer rib of the moldboard, and on the black iron near the hydraulic unit.

Note: SV3 Plows use the same serial number for both hydraulic and moldboard.



### Registration

You must register your plow online to be eligible for the 5 year warranty. Please visit...

[meyerproducts.com/product-registration](http://meyerproducts.com/product-registration)

Please note your registration ID for future reference.

Registration ID \_\_\_\_\_