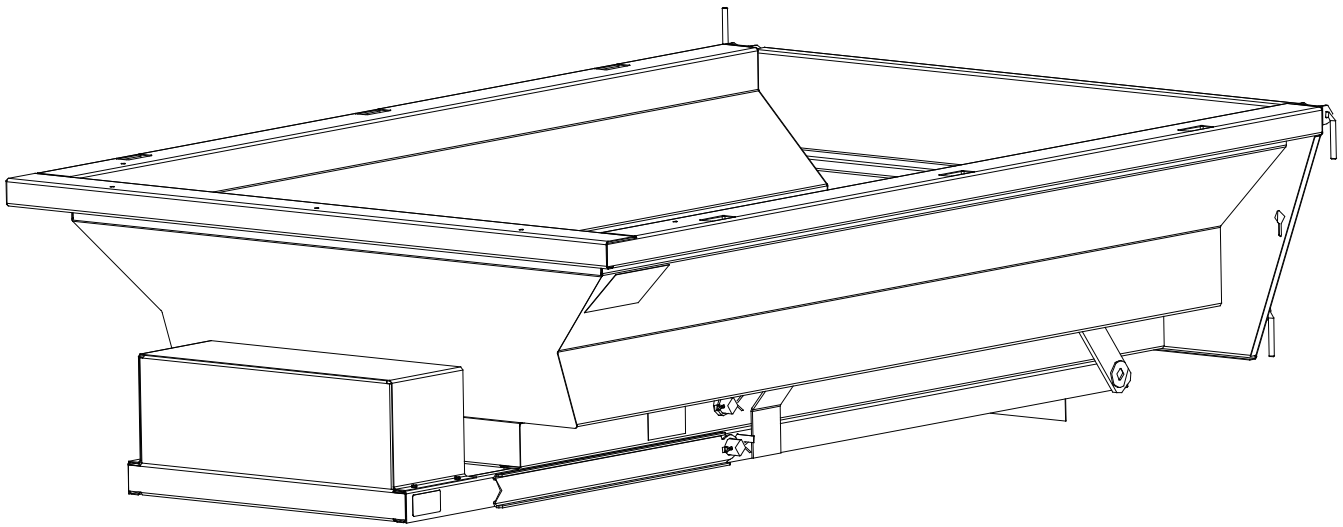


INSERT DUMP BED



Meyer®

Contents

TABLE OF CONTENTS.....	2
SAFETY.....	3-5
MOUNTING AND OPERATING INSTRUCTION.....	6-7
ELECTRIC PUMP WIRING INSTRUCTIONS.....	8-9
DUMP BED MAINTENANCE.....	10-11
DUMP BED PART LISTING.....	12-18
SUBFRAME.....	19
HYDRAULIC PUMP PARTS LISTING.....	20-21
HOIST PARTS LISTING.....	22-25
CAB SHIELD.....	26
WARRANTY.....	27

SAFETY PRECAUTIONS

The best safety device is a careful operator!



This symbol means **ATTENTION!**
Become Alert!
Your safety is involved!
Please read and understand completely before doing!

BEFORE PERFORMING MAINTENANCE OPERATIONS, PARK VEHICLE ON LEVEL GROUND. SET PARKING BRAKE, SHUT OFF ALL POWER, AND MAKE SURE ALL MOVEMENT HAS STOPPED. IF BODY IS RAISED, IT MUST BE SECURELY BLOCKED SO IT CANNOT COME DOWN. SUPPORT BLOCKS MUST NOT BE REMOVED UNTIL THERE IS NO DANGER OF ANYONE BEING UNDER BODY WHEN BODY IS LOWERED.



Improper use of this equipment can result in serious injury. To reduce this possibility, give complete and undivided attention to the job at hand, and follow these safety precautions.

PREPERATION:

Know your controls. Read this instruction manual. Learn how to stop the equipment quickly in an emergency.

Do not allow children to operate machine; nor adults to operate it without proper instructions.

Keep all individuals not involved in the use of the equipment a safe distance away.

A copy of this manual should be available in the cab at all times. A copy may be obtained from your local dealer or download from www.meyerproducts.com.

OPERATION:

Do not exceed rated capacities of chassis or hoist.

Observe and shut off all equipment controls before starting engine so equipment will not unintentionally operate when engine is started.

Always check area around machine before engaging or operating controls.

Vehicle should be on a flat surface prior to raising bed. Operation on slippery uneven terrain may result in equipment damage or personal injury.

Know the material you are hauling and plan your haul to avoid "set up" or freezing of the load in the dump body. In the event that a load becomes stuck or frozen in the body, do not abuse, overload, or damage the truck, hoist, or body in efforts to quickly free the load. It may be necessary to thaw indoors to safely remove such a load.

In the event that shoveling or mechanical means are used to free the stuck load, be sure the load is NOT hoisted and the tailgate, if opened, is secured properly before starting this effort. If hoisted, a stuck load, or portion, could release unexpectedly and cause injury to personnel or damage to the body, truck, or surroundings.

Some materials such as mud, or sludge, may shift easily when wet, resulting in increased tendency to overturn the truck on curves, unstable ground, or side slope situations. Reduce load size, speeds, and side slopes, and use care and planning to avoid this potential occurrence.

Unload the body and securely prop and block a raised body before any service, inspection, or repair work is started.

Be sure the PTO is disengaged before traveling. Failure to disengage the PTO from driving the pump/valve when in transit may allow the dump body to rise unintentionally. This may lead to loss of vehicle control, accidental injury and/or property damage.

Lift points are provided to safely lift body assembly. Never lift or handle loaded body, empty material prior to handling the body.

Always wear relatively tight and belted clothing when operating equipment. Loose jackets, shirts sleeves or other loose clothing should not be worn because of the danger of catching them in moving parts or controls.

Stop and inspect equipment if unusual movement, sounds, or noises are observed. Repair damage before restarting and operating the equipment.

Disengage power to all operating equipment: (1) before leaving operator's position, (2) before making any repairs or adjustments, or (3) when not in use.

Take all possible precautions when leaving the equipment unattended; such as disengaging the hydraulic system, shifting vehicle out of gear, setting parking brake, shutting off engine and removing key. Never leave raised body unattended.

SAFETY DECALS

NOTICE:

1. It is the responsibility of the Owner of the Dump Bed to replace any or all safety decals which become unreadable or otherwise defaced.
2. Read and observe all "Danger" and "Caution" safety decals appearing on equipment.

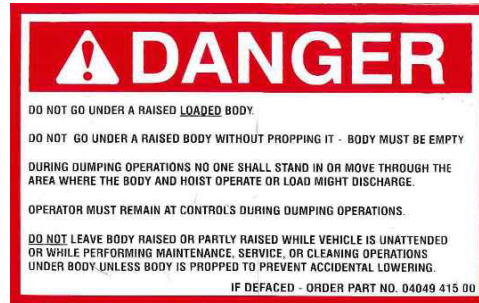
The following safety decals appear in various locations on your Dump Bed, refer to page 6 for approximate locations.

The sizes of the decals shown in this manual have been reduced in order to save paper space. Each decal has dimensions listed for actual sizes.



This decal alerts all to the danger of being under a raised Dump Bed where serious personal injury could result if the bed were to come down.

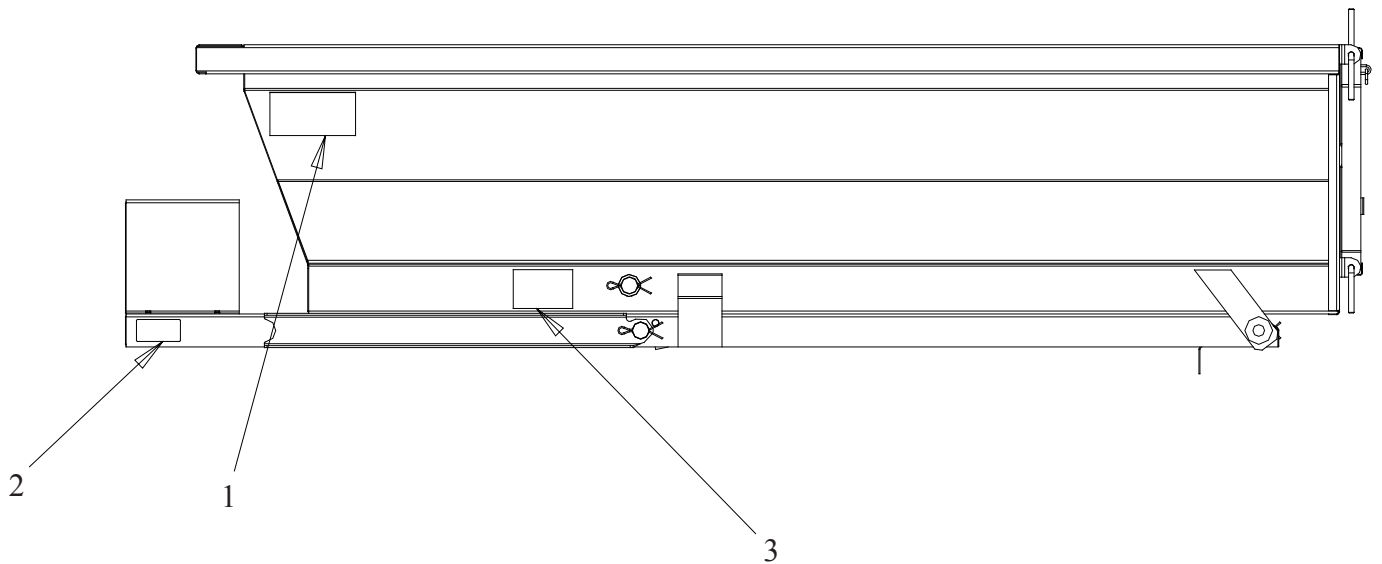
This decal also alerts the operator to precautions necessary to eliminate other dangerous situations associated with a raised bed.



This decal alerts all to the danger of being under a raised Dump Bed where serious personal injury could result if the body were to come down.

This decal also alerts the operator to precautions necessary to eliminate other dangerous situations associated with a raised bed.

INSERT DUMP BED SAFETY DECAL LOCATION



Item	Part Number	QTY	Description
1	64093	2	Decal, Large, Danger
2	62571	1	Decal, Serial No.
3	64094	2	Decal, Small, Danger

MOUNTING AND OPERATING INSTRUCTIONS



CAUTION!

MAKE SURE TRUCK IS ON LEVEL GROUND AND BRAKES ARE SET.



WARNING!

BEFORE RAISING DUMP BED MAKE SURE AREA AROUND TRUCK IS CLEAR OF PEOPLE

DUMP BED MOUNTING

1. Make sure the truck being used is on level ground.

2. Remove tailgate from truck.

3. Position dump bed into truck bed with rear channel of sub frame flush against rear of truck bed.

4. Ensure dump bed is centered between sides of truck bed.

5. Determine best position to drill holes in rear channel and truck bed to attach.



CAUTION!

CHECK FOR CLEARANCES OF WIRING OR OTHER OBSTACLES BEFORE DRILLING ANY HOLES.

6. Drill two (2) 13/32 inch hole to accommodate the 3/8 inch bolts. See PHOTO #1 next page.

7. Attach dump bed to truck bed using the supplied 3/8 inch bolts, nuts and washers.

8. Attach negative side of jumper cable to the dump bed and the positive side to solenoid on pump. The truck frame can be used as a temporary ground.

9. Cut and remove the shipping straps at the front of the dump bed and hook loose end of power cable to positive terminal of truck battery.

10. When everyone is clear of the truck, raise the dump bed high enough to engage the safety prop. Lower the dump bed so that the prop properly engages the prop pocket and is supporting the full weight of the dump bed. Remove power.



WARNING!

DO NOT WORK UNDER THE DUMP BED WITHOUT HAVING THE SAFETY PROP POSITIONED PROPERLY IN THE PROP POCKET

11. Drill a 13/32 inch hole in the front support channel. See PHOTO #2 on next page.



CAUTION!

CHECK FOR CLEARANCES OF WIRING OR OTHER OBSTACLES BEFORE DRILLING ANY HOLES.

12. Attach the front support channel to the truck bed using the 3/8 inch bolt, nut and washer.

13. For added support place the 4 inch plate between the under side of the truck bed and the nut.

NOTE: Since trucks models vary, if the bolts provided are not of correct length, GRADE 5 bolts can be purchased from most local hardware and farm supply stores.

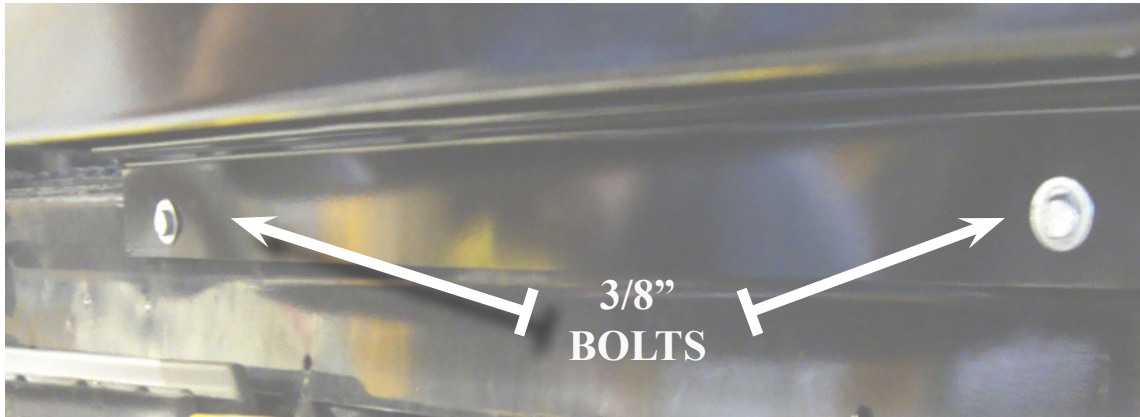


PHOTO #1

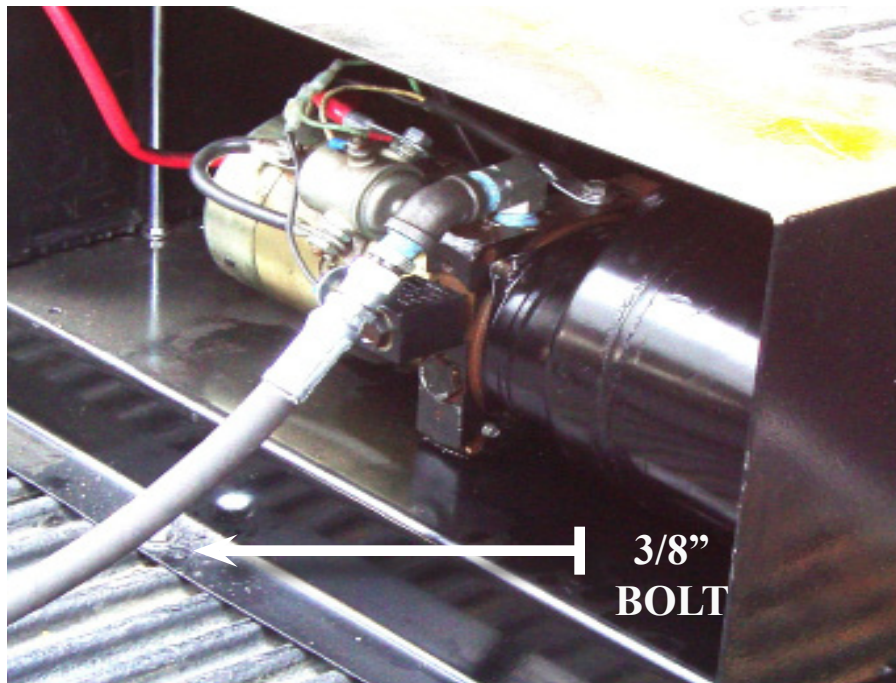


PHOTO #2

ELECTRIC PUMP WIRING INSTALLATION INSTRUCTIONS

DUMP BED WIRING MOUNTING



WARNING!

USE SAFETY GLASSES OR OTHER SUITABLE FACE PROTECTION AGAINST POSSIBLE BATTERY EXPLOSION. DO NOT SMOKE AND AVOID OTHER SOURCES OF IGNITION



WARNING!

BEFORE BEGINNING ANY INSTALLATION ON THIS UNIT, DISCONNECT THE BATTERY NEGATIVE CABLE.

NOTE: Use dielectric grease on all electrical connections. Keep all wires away from sharp, hot or moving parts.

1. Find a suitable mounting location for the circuit breaker/ relay panel inside the engine compartment. Location must be within 14 inches of the main battery and in an area that is dry and protected from road splash. Mount panel with self-tapping screws supplied in kit.
2. Attach the 18 inch long battery cable to the circuit breaker terminal marked **BAT**. **(DO NOT ATTACH TO BATTERY AT THIS TIME)**
3. Locate the 22 foot long truck side wiring harness. Route harness from the circuit breaker/relay along truck frame, up into truck bed to electric pump. Plug side to pump.
4. Attach **BLACK** (shorter) cable of the truck side wiring harness to a clean location on the truck frame. Connect **RED** (longer) cable to the circuit breaker/relay panel. Secure all wiring with the wire ties provided. Excess cable must be coiled up and secured.
5. Connect spreader side wiring harness to the electrical pump.
The hydraulic pump is a one directional design.

DUMP BED CONTROL MOUNTING

1. Select a suitable location in the cab of the truck to mount the spreader control switch. Drill 1/2 inch diameter mounting hole for switch. **(DO NOT MOUNT SWITCH AT THIS TIME)**



WARNING!

CONSULT VEHICLE MANUFACTURER FOR ACCEPTABLE MOUNTING LOCATIONS

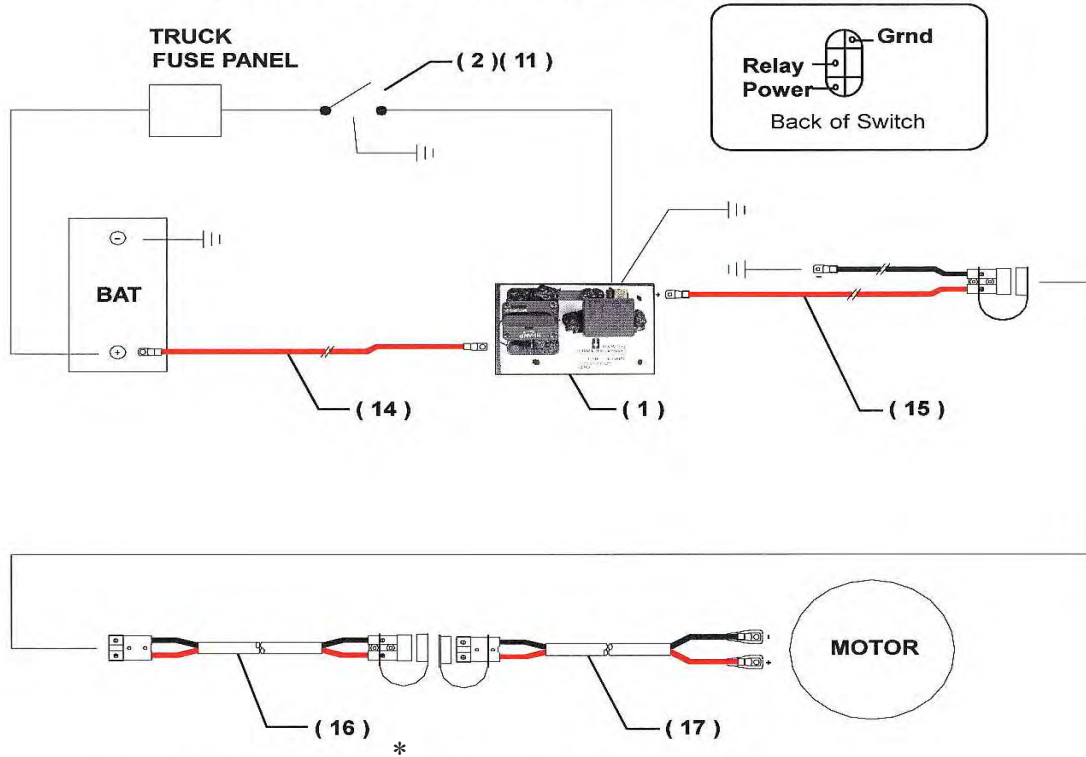
THE CONTROL SWITCH COULD INTERFERE WITH AIR BAG(S) AND OTHER FUNCTIONS OF THE OCCUPANT PROTECTIVE SYSTEMS, SUCH AS KNEE BOLSTERS

2. Route 14 ga black wire from switch location thru grommets wire exit in cab's fire wall to the circuit breaker/relay panel. Cut wire to size and attach terminals. Connect to switch and relay.
3. Using 14 ga white wire, cut (2) ground wires to size and attach terminals. (1st) from switch location to ground. (2nd) from relay to ground. Connect wires.
4. Using remaining 14 ga black wire, cut power wire to size and attach terminals from switch location to trucks fuse panel. Assemble switch and switch guard in mounting hole. Connect wires to switch and a **KEY OPERATED** circuit on fuse panel. **(DO NOT USE A CIRCUIT USED FOR AN OCCUPANT SAFETY SYSTEM).**
5. With all switches in **OFF** position, connect the negative battery cable(ss) to battery. Plug cable from spreader into socket mounted on truck.
6. Dump is now ready for test.

NOTE: SUPPLIED TERMINALS ARE HEAT SEALABLE

INSERT DUMP BED INSTALLATION AND OPERATING INSTRUCTION MANUAL

ELECTRIC PUMP WIRING INSTALLATION INSTRUCTIONS CONT'D



<i>Item</i>	<i>Part Number</i>	<i>Qty</i>	<i>Description</i>
1	63351	1	Assy, Relay/Circuit Breaker
1A	63352	1	Breaker, Circuit
1B	63353	1	Relay, 12Vdc, 75Amp
2	63354	1	Switch, On/Off Toggle Lum
N/S	63355	2	Heat Sealed Terminal - Ring
N/S	63356	2	Heat Shrink Terminal - Male Push-on
N/S	63357	6	Heat Shrink Term.- Female Push-on
N/S	63313	3	Screw, 1/4-14 x 1 hwh Teks/3
N/S	21253	3	Flat washer, 1/4" S.A.E. Zp
N/S	20325	3	Lock washer, 1/4" Med Split, Zp.
N/S	62813	8	Tie, Nylon 5 1/2" Std.
N/S	63414	1	Grease, Dielectric, 4 Gram Tube
11	63359	1	Guard, Switch
N/S	62674	15ft	Wire, 14 Ga. Black Insulated
N/S	62673	6ft	Wire, 14 Ga. White Insulated
14	63360	1	Cable, Battery
15	63361	1	Assy, Wiring Harness - Truck Side
16	63362	1	Assy, Wiring Harness - 5ft Extension
17	63363	1	Assy, Wiring Harness - Spreader Side

N/S = Not Shown

* Item 16 only used in specific applications not standard in all kits

DUMP BED MAINTENANCE

MAINTENANCE SCHEDULE

1. Check hydraulic fluid. If additional fluid is required, add Dextron ATF oil. The fluid should not need to be changed unless it becomes contaminated from an outside source. To check the fluid level, use the following steps.

a. Remove breather cap.

b. Insert small ruler until it touches bottom of reservoir.

c. Depth of fluid should measure approximately 5 inches. on ruler.

d. Add in small amounts if additional fluid is required. **DO NOT OVER FILL.**

2. Lubricate the following grease fitting locations every 3 to 6 months, depending on use.

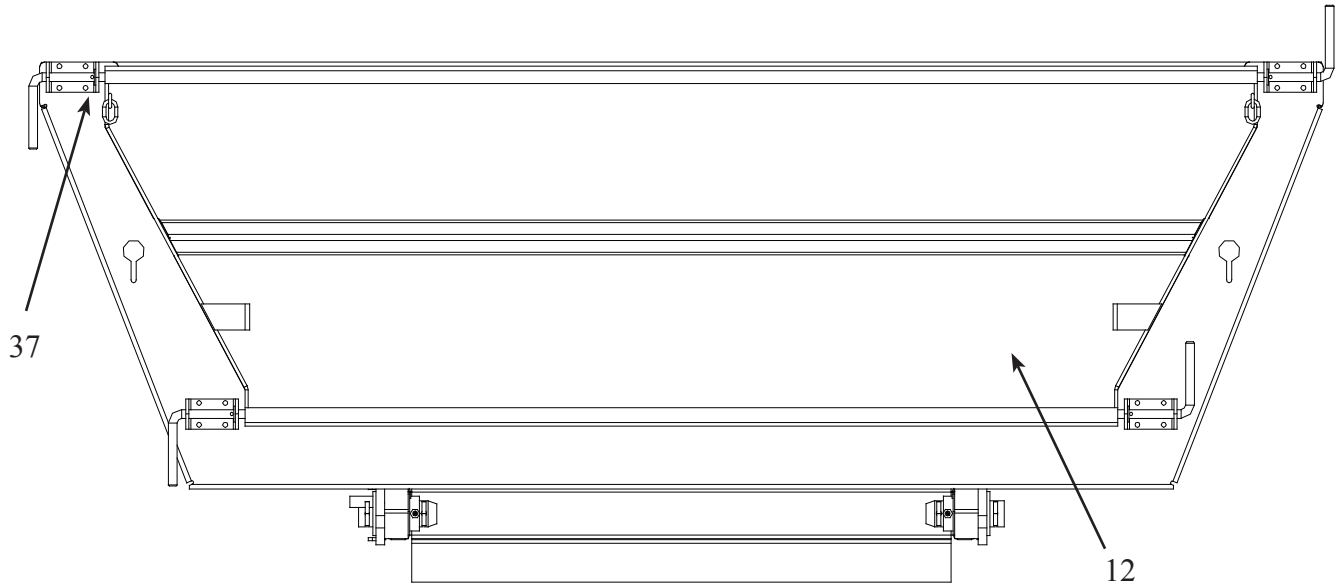
SEE 12 POINT GREASE FITTING LOCATOR CHART ON FOLLOWING PAGE AS GUIDE TO LUBRICATION POINTS.

MAINTENANCE GREASE POINT LOCATION GUIDE

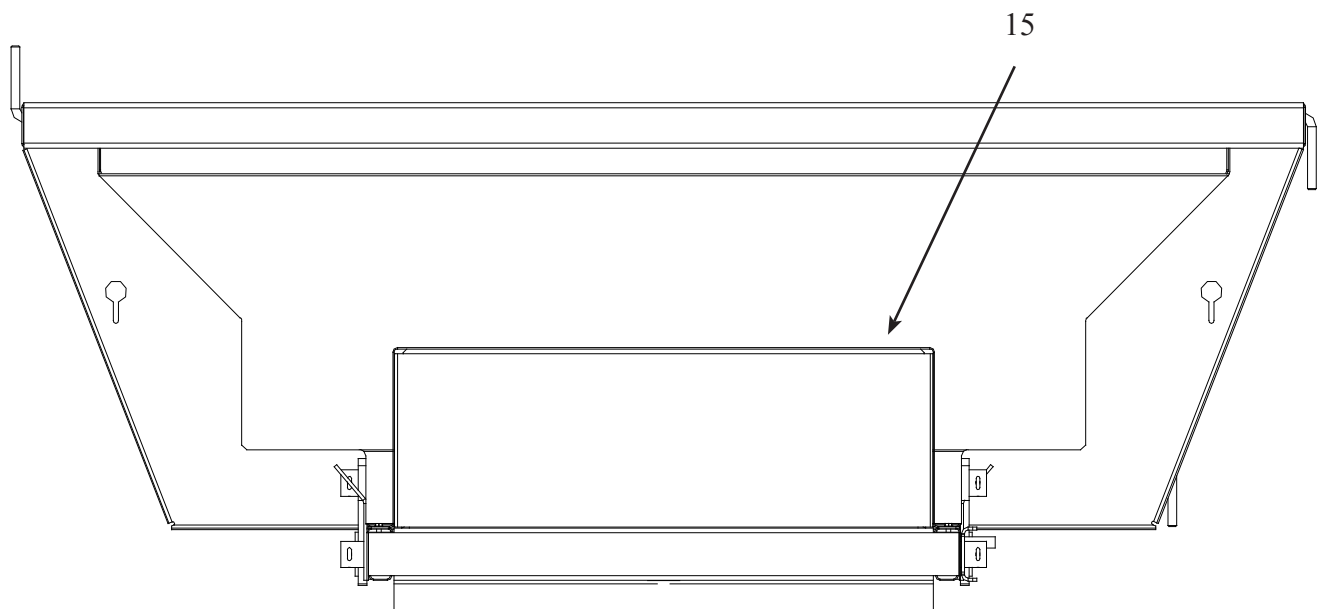


PARTS LISTING
AND
PRODUCT VIEWS

REAR VIEW



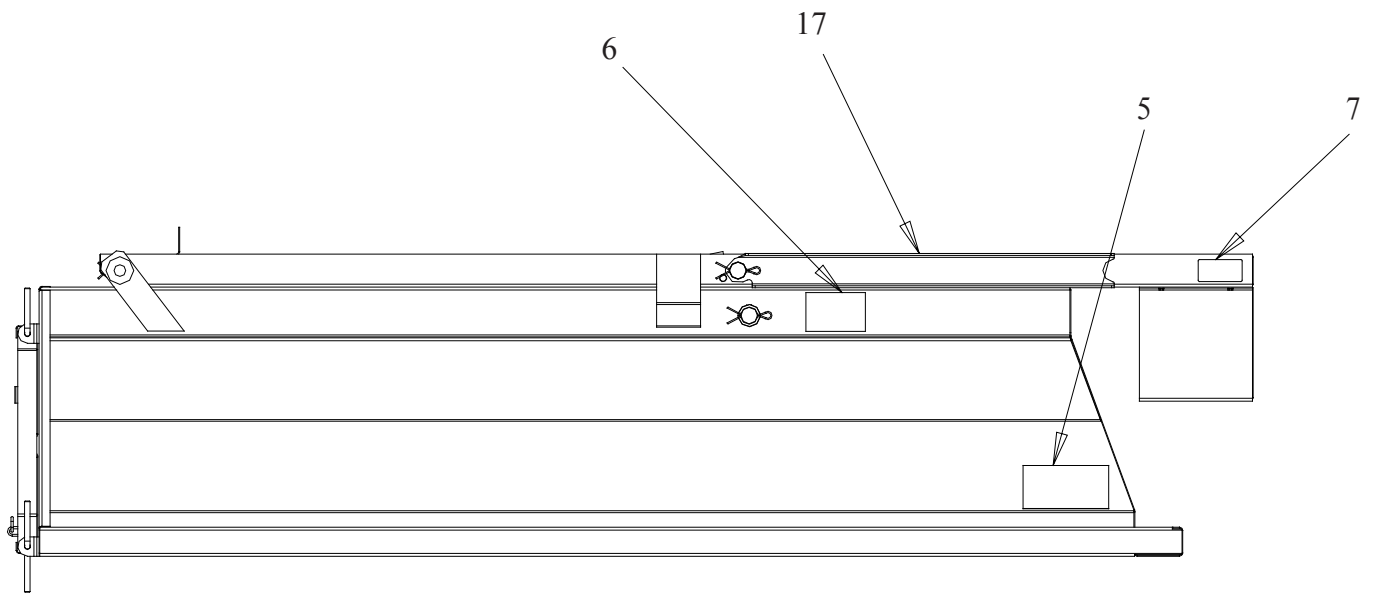
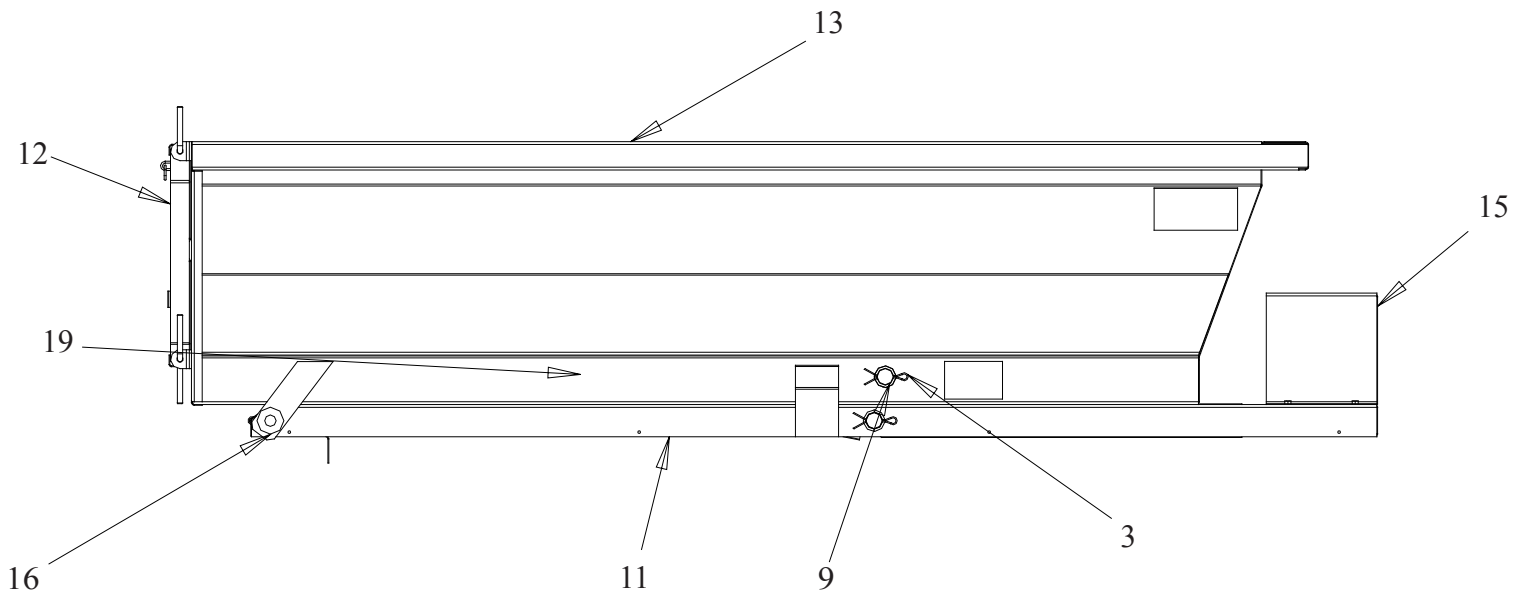
FRONT VIEW



PARTS LIST

ITEM	PART NUMBER	QTY	DESCRIPTION
12 CS	64095	1	WELD, TAILGATE CS
SS	64096	1	WELD, TAILGATE, S3
15 CS	64097	1	WELD, COVER PUMP
37	64098	4	LATCH, SPRING

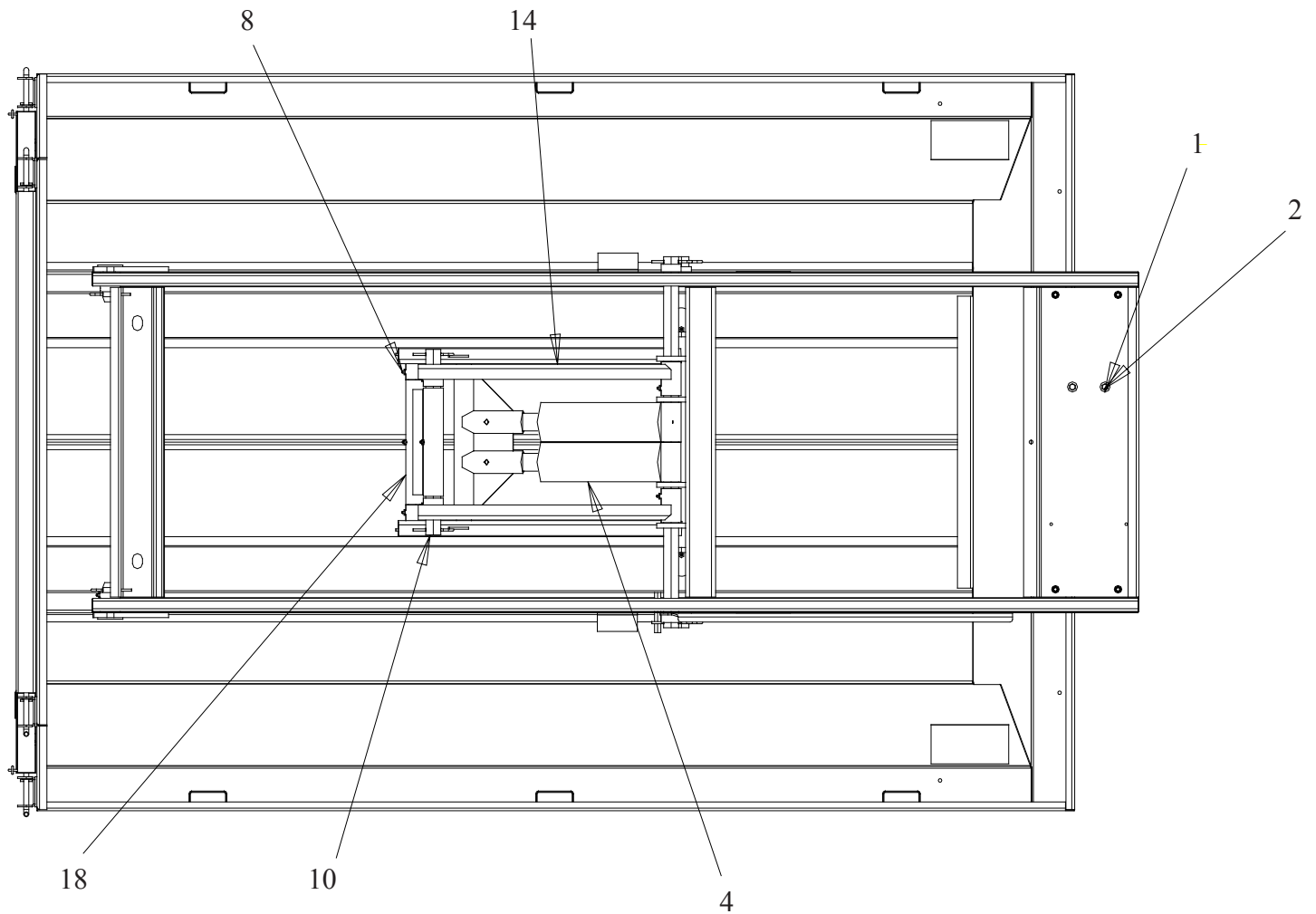
SIDE VIEW



PARTS LIST

ITEM	PART NUMBER	QTY	DESCRIPTION
3	64099	10	COTTER PIN 1/4" X 3"
5	64093	2	DECAL, LARGE DANGER
6	64094	2	DECAL, SMALL DANGER
7	62571	1	DECAL, SERIAL NUMBER
9	64100	2	SHAFT, PIVOT
12	CS 64095	1	WELD, TAILGATE CS
	SS 64096	1	WELD, TAILGATE, S3
13	CS 64101	1	WELD, BODY
	SS 64102	1	WELD, BODY
15	CS 64097	1	WELD, COVER PUMP
16	64103	2	WELD, HINGE PIN SHORT
17	64104	1	WELD, PROP ROD
19	64105	1	WELD, UPPER HOIST

BOTTOM VIEW

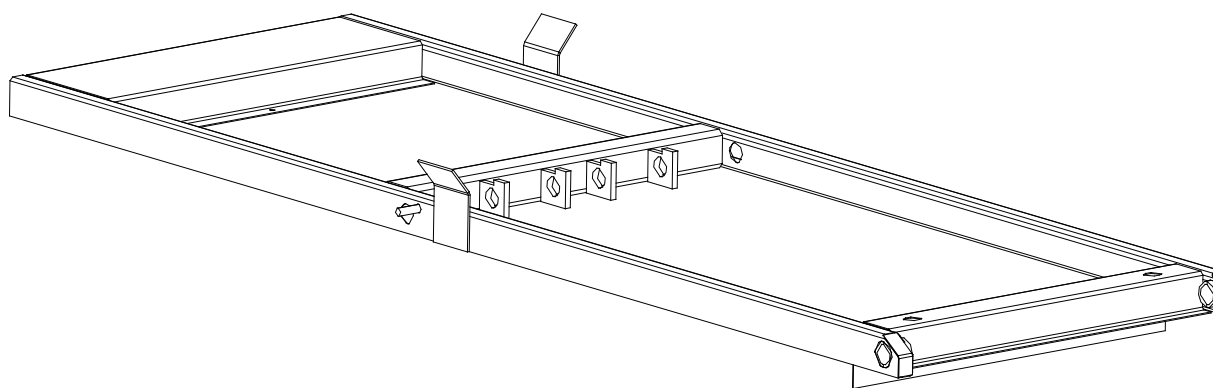


PARTS LIST

ITEM	PART NUMBER	QTY	DESCRIPTION
1	20353	2	3/8" FLAT WASHER ZP
2	63558	6	3/8" - 16 X 1" HH BOLT ZP
4	64106	2	CYLINDER, HYDRAULIC
8	61236	12	GREASE FITTING
10	64107	2	SHAFT, PIVOT
14	64108	2	WELD, CHANNEL, LOWER HOIST
18	64109	1	WELD, PIVOT ASSEMBLY

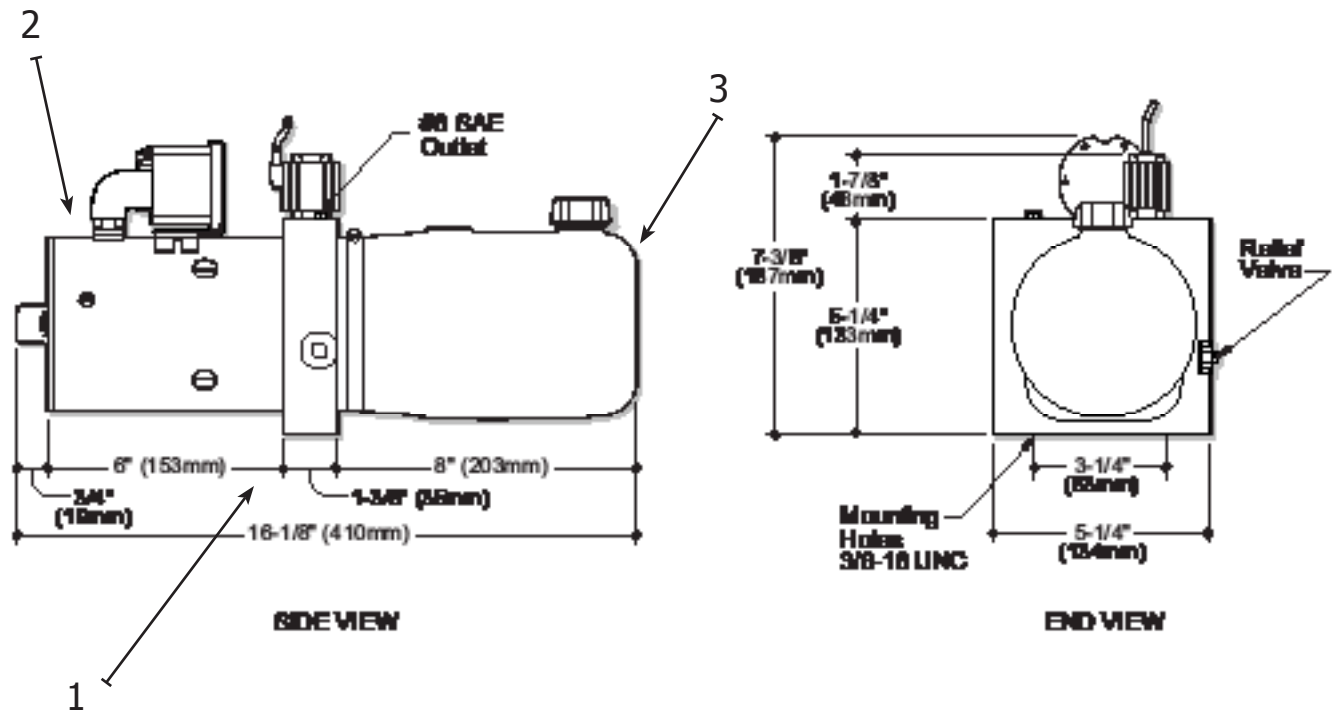
SUB-FRAME

64110



HYDRAULIC PUMP 64111

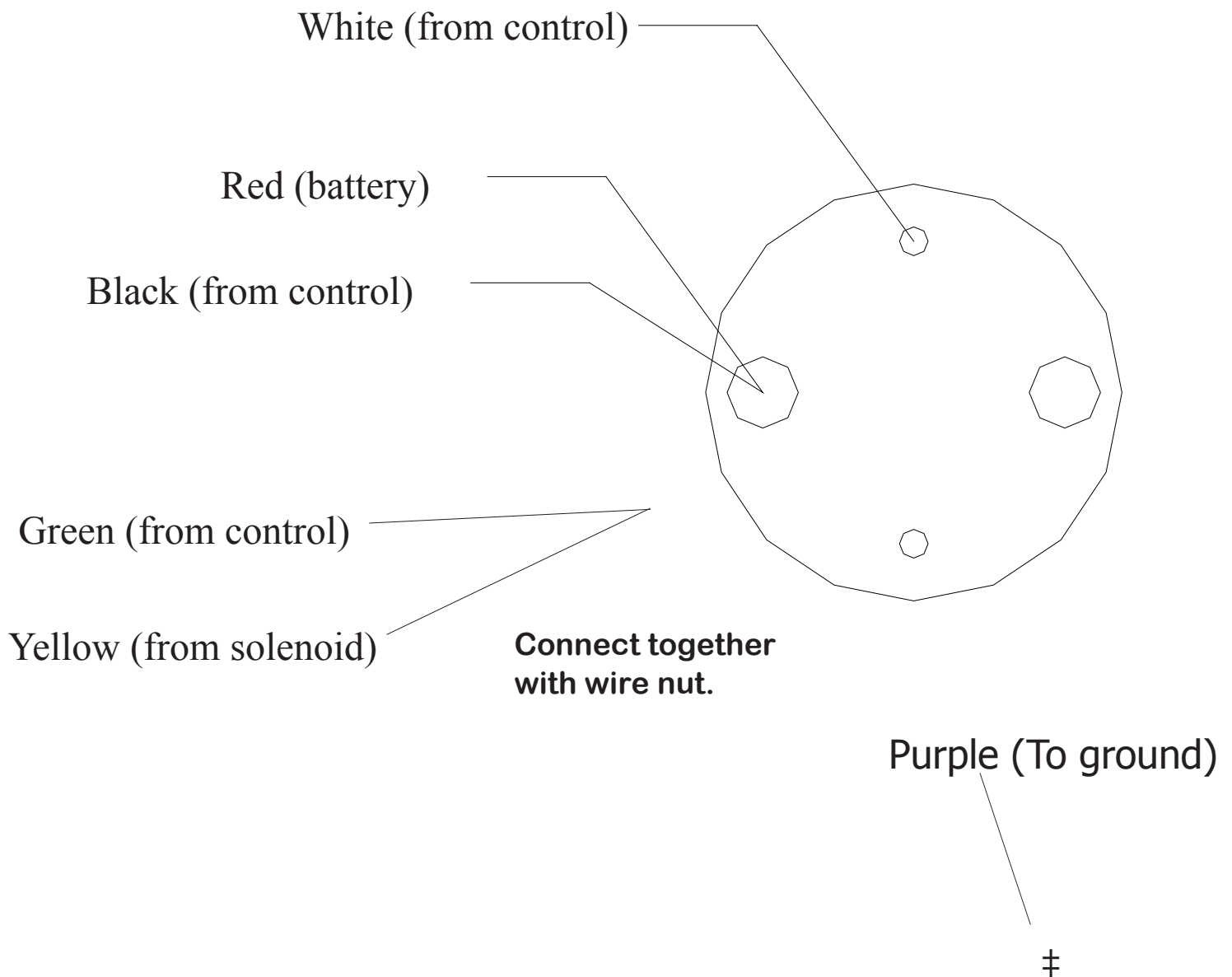
DIMENSIONS AND PARTS LISTING



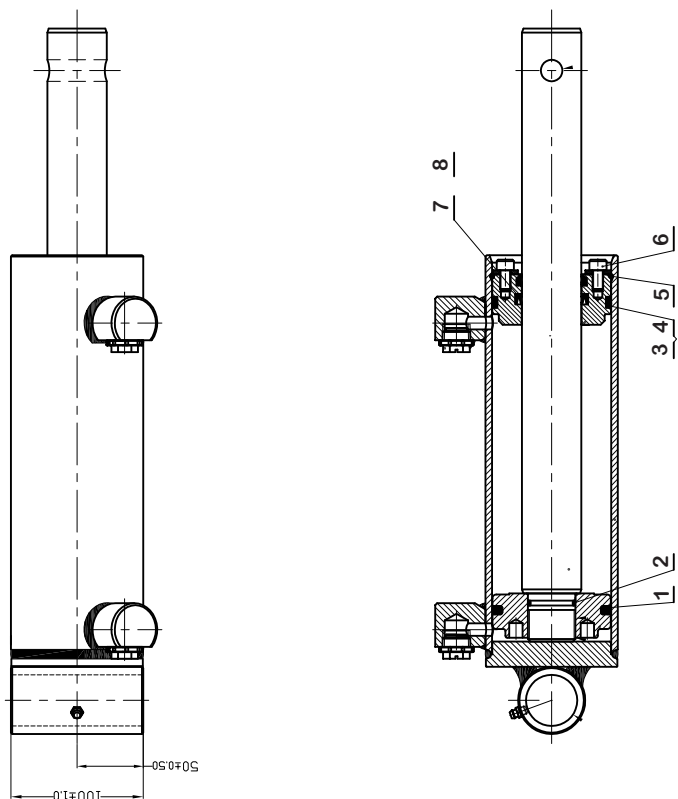
ITEM	PART NUMBER	QTY	DESCRIPTION
1	64111	1	PUMP, HYDRAULIC/ELECTRIC W/ RESERVOIR
2	64112	1	PUMP ONLY, HYDRAULIC/ELECTRIC
3	64113	1	TANK ONLY, PUMP, HYDRAULIC/ELECTRIC

HYDRAULIC PUMP CONT'D

SOLENOID WIRING DIAGRAM

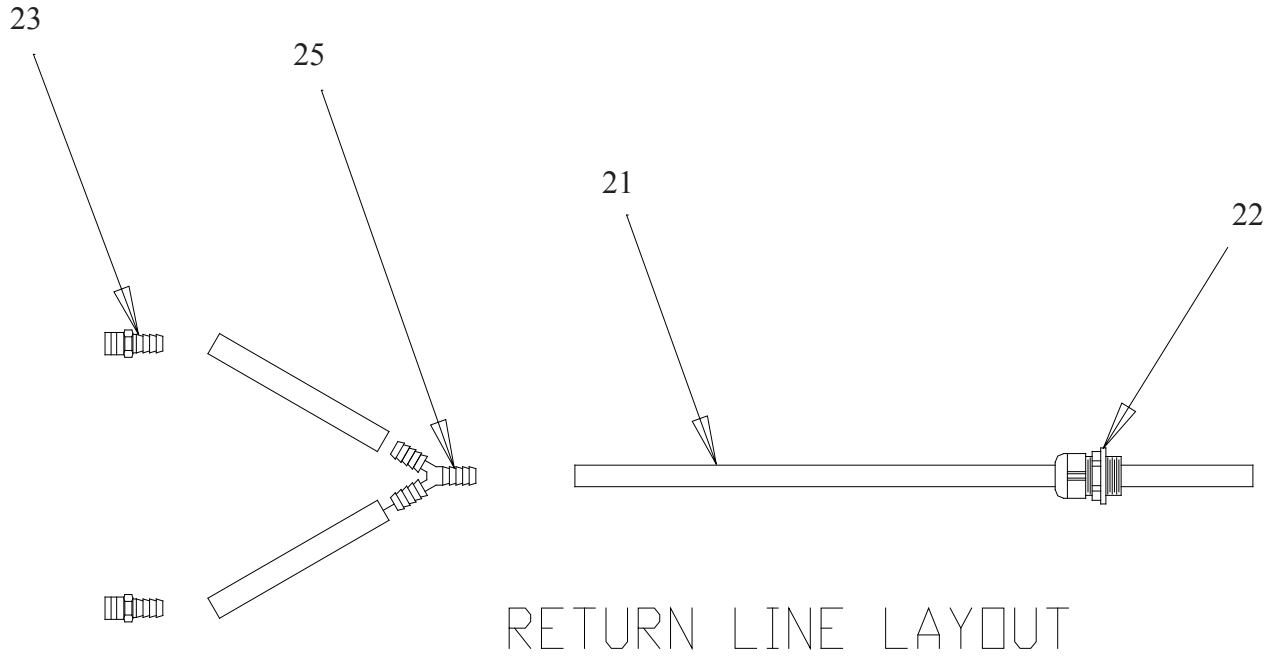


HYDRAULIC HOIST 64106

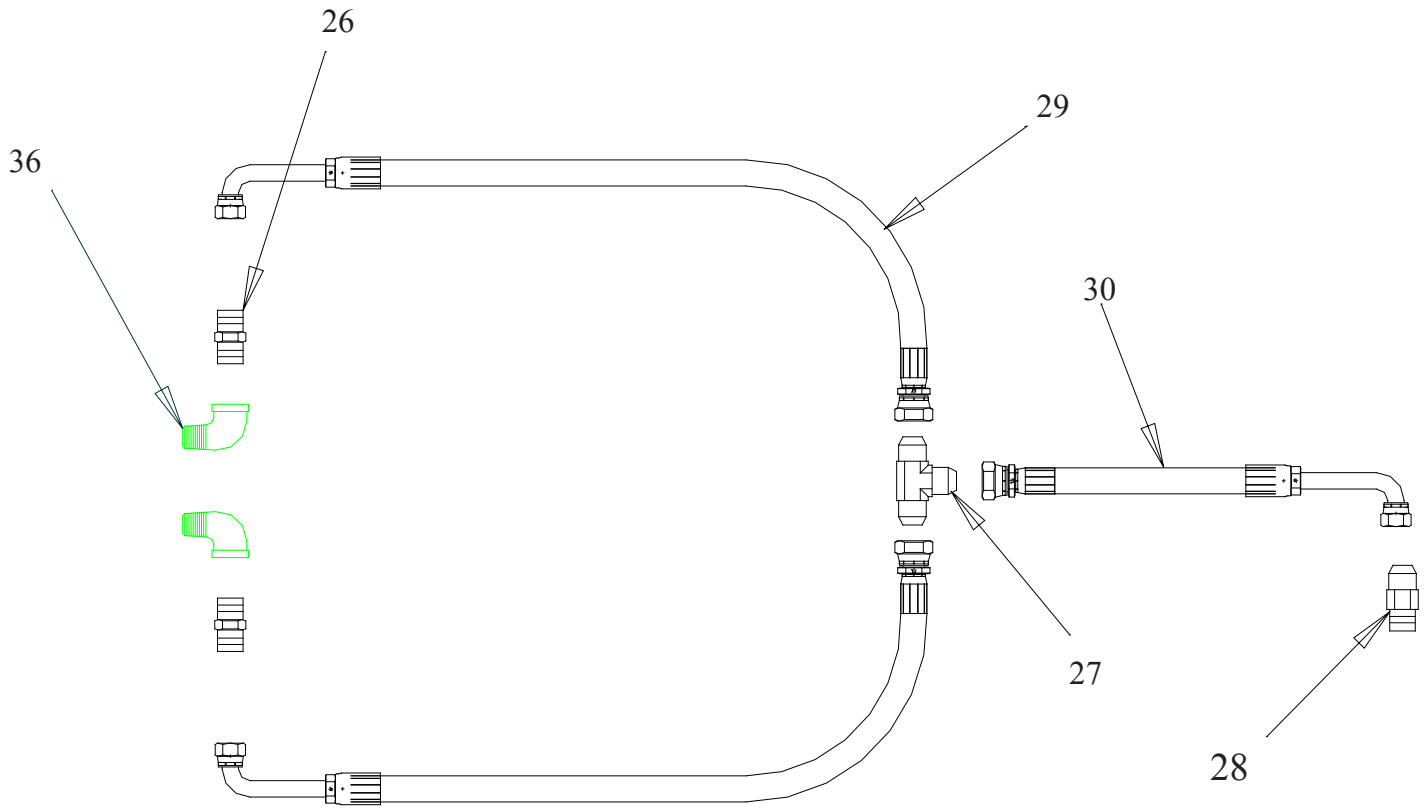


64114 SEAL KIT		
ITEM	DESCRIPTION	QTY
1	ZURCRON YWNSEAL	1
2	O-RING	1
3	O-RING	1
4	BACK-UP RING	1
5	FLAT WASHER STEEL	2
6	HEX SOCKET HEAD SET SCREW	2
7	ZURCON U-CUP RU3	1
8	SCRAPER DA17	1

HYDRAULIC HOIST CONT'D



HYDRAULIC HOIST CONT'D



SUPPLY LINE LAYOUT

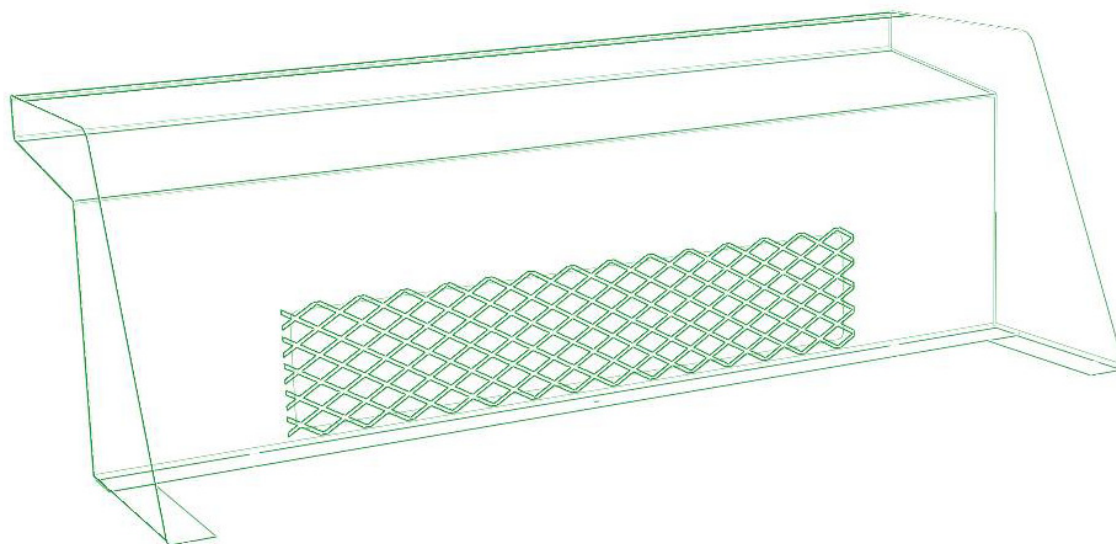
HYDRAULIC HOIST LINE PARTS LIST

ITEM	PART NUMBER	QTY	DESCRIPTION
21	64115	100 FT	TUBING, 3/8" ID CLEAR
22	64116	1	CORD, GRIP, 1/2"
23	64117	2	FITTING, 1/2MPT X 3/8 OD BARB
25	64118	1	Y 3/8" BARB
26	64119	2	ADAPTER, #6 JIC(M) X 1.2MPT (M)
27	64120	1	TEE #6 JIC(M)
28	64121	1	ADAPTER, #6 JIC(M) X #6 ORB
29	64122	2	HOSE, 3/8 #6 JIC(F) - #6 JIC(F) 90° 18"
30	64123	1	HOSE, 3/8 #6 JIC(F) - #6 JIC(F) 90° 38"
36	63489	2	ELBOW, 1/2" 90° STREET

CAB SHIELD

63919 CS

63920 S3



SPREADER ONE YEAR WARRANTY

Meyer Products ("Meyer") warrants to the original purchaser only that it will repair, or, at the sole option of Meyer, replace any part of the new Meyer covered product which proves to be defective in workmanship or material under normal use for a period of one year from the date of delivery to the original purchaser. This warranty is not transferable or assignable. The original purchaser's sole and exclusive remedy against Meyer and Meyer's sole obligation for any and all claims, whether for breach of contract, warranty, tort (including negligence) or otherwise shall be limited to providing, through its Distributor/Sub Distributor network, all labor and or parts necessary to correct such defects free of charge. Any cost incurred in returning the product to the Distributor/Sub-Distributor is the responsibility of the original purchaser.

The gasoline engine used in this product is covered by its own warranty as provided by the engine manufacturer. A copy of this warranty is included with the engine.

EXCLUSIONS

THIS WARRANTY DOES NOT COVER PAINT, EXCEPT EXPENDABLE PARTS SUCH AS PINS, SPREADER FINS, AND OTHER NORMAL WEAR ITEMS. MEYER SHALL NOT BE LIABLE FOR ANY SPECIAL, INDIRECT OR CONSEQUENTIAL DAMAGES ARISING FROM ANY CLAIMS ARISING HEREUNDER, OR FOR DAMAGES RESULTING FROM LACK OF NECESSARY MAINTENANCE, OR FROM MISUSE, ACTS OF GOD, ALTERATION OF A MEYER PLOW, SPREADER OR PART, OR FROM USE OF PARTS OR HYDRAULIC FLUID NOT SUPPLIED BY MEYER. USE OF THE MEYER SNOWPLOW, SPREADER FOR ANY PURPOSE OTHER THAN PLOWING SNOW OR SPREADING APPROVED MATERIAL ARE EXAMPLES OF AN ABUSE AND MISUSE.

THE FOREGOING WARRANTY IS EXCLUSIVE AND IN LIEU OF ALL OTHER WARRANTIES, EXPRESS OR IMPLIED, INCLUDING, BUT NOT LIMITED TO, ANY IMPLIED WARRANTY OF MERCHANTABILITY OR FITNESS FOR A PARTICULAR PURPOSE.

WARRANTY SERVICE

In order to obtain service under this warranty, the original purchaser must return the Meyer claimed defective product to the Distributor/Sub-Distributor from whom the product was purchased or to any authorized Meyer Distributor/Sub-Distributor, transportation and freight charges prepaid. Only Meyer Distributor/Sub-Distributors are authorized to perform the obligations under these warranties.

GENERAL

It is the responsibility of the original purchaser to establish the warranty period by verifying the original delivery date. A bill of sale, cancelled check or some other appropriate payment record may be kept for that purpose. It is recommended, but not required, that the consumer verify the original delivery date by immediately returning the attached Warranty Registration Card. No person is authorized to change this warranty or to create any warranty other than that set forth herein. This warranty gives you specific legal rights and you may also have other rights which vary from state to state.

Meyer Products
18513 Euclid Avenue
Cleveland, Ohio 44112
Phone (216) 486-1313
Fax (216) 486-3073
E-Mail advertising@meyerproducts.com



MEYER PRODUCTS, LLC
18513 EUCLID AVE.
CLEVELAND, OHIO 44112-1084

PHONE: (216) 486-1313
FAX: (216) 486-9775

email: warranty@meyerproducts.com
website: www.meyerproducts.com

**IMPORTANT
INFORMATION
ENCLOSED**