



Lot Pro
Assembly Instruc-

Standard Operating System with Hands Free Plowing T-73 12V Hydraulic Unit Includes 41750

Pro Mount Plow Attachment System



735 Beta Dr. Unit H Mayfield, Ohio 44143
meyerproducts.com

©Aebi Schmidt Group, 2026

Form No. 1-1236R February 2026

NOTICE: Meyer Products LLC reserves the right, under its continuing product improvement program, to change construction, design, details, specifications, and prices without notice or without incurring any obligation. Meyer Products LLC assumes no responsibility for installations not made in accordance with these instructions.

Table of Contents

General Information	1
Black Iron Parts Lists.....	2-3
Moldboard Parts List	4
Standard Operating System Wiring.....	5
Plow Assembly & Adjustments	6-7
Hydraulics.....	8-9
Mounting Plow	10
Dismounting Plow.....	11
Pre-Delivery Inspection.....	12
Registration	12

Please visit our website to find our most updated technical information; including installation instructions, user manuals, parts diagrams, EZ Troubleshooter, and more.

Please see your owner's manual for Pre-Season, Post-Season, and General Maintenance.

meyerproducts.com

CAUTION GENERAL INFORMATION

Always disconnect battery prior to installation.

SAFETY PRECAUTIONS should be used when Quik Lift® is in a RAISED position.

LOWER plow to the ground when vehicle is PARKED.

OVERHAUL and SERVICE information is covered on separate instructions.

WARNING Lift arm should be removed from vehicle if / when snowplow is removed.




Note:

1. Connect ground cable to negative side of battery for a solid connection to ground.
2. **CAUTION** Route all cables away from moving engine parts, Manifolds, and sharp sheet metal.
3. For weather protection, coat all connections with Meyer Dielectric Grease Part No. 15632
4. The vehicle must be equipped with a "Heavy Duty Battery" (70 Amp, Hr. Min.), 550 C.C.A. and "Alternator" (60 Amp. Min.) to obtain maximum performance.
5. **Follow these instructions explicitly. Warranty does not apply to a Meyer product which has been negligently or improperly assembled or installed.**

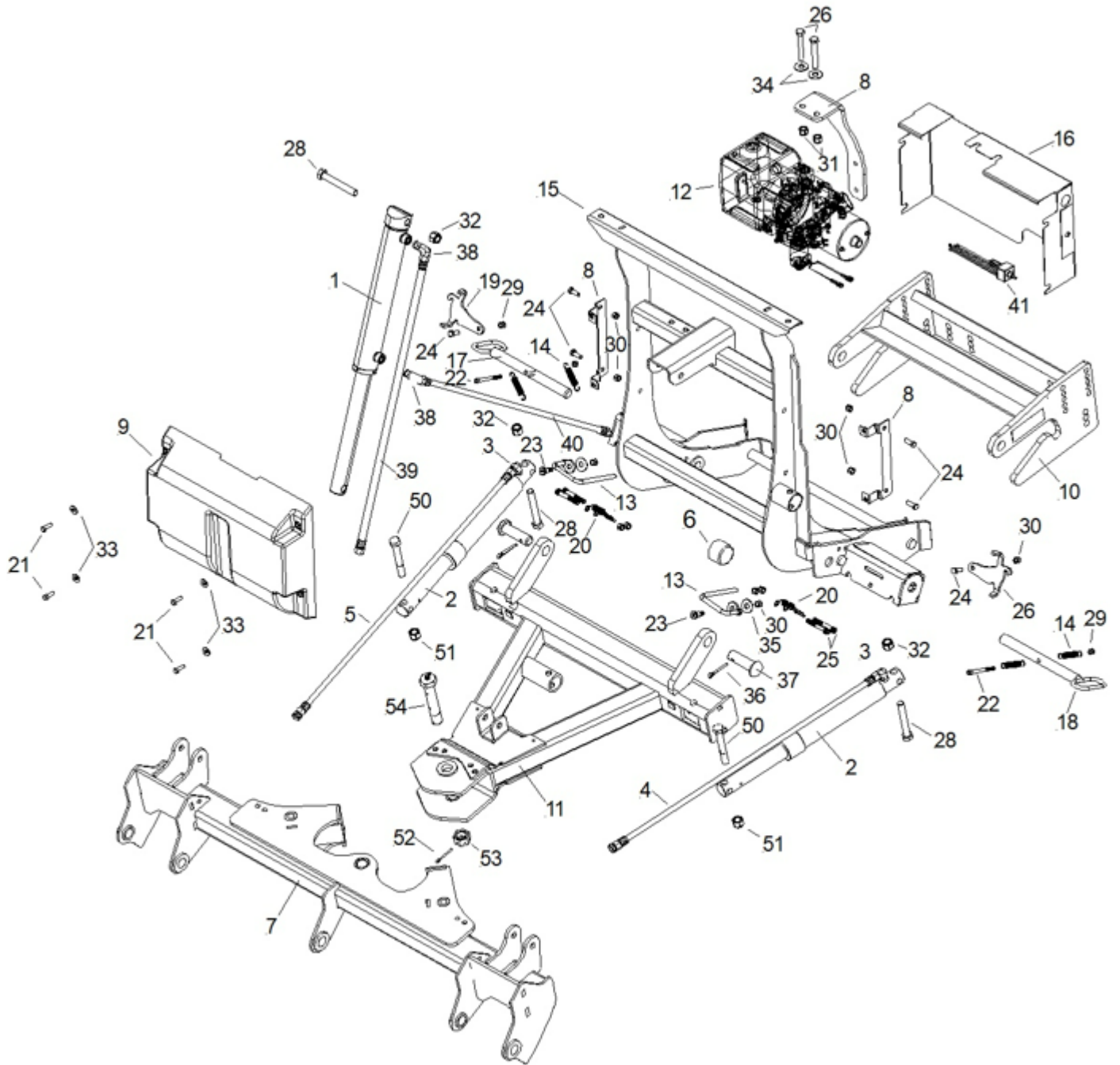
Tool List for Plow Assembly

Pliers	9/16" socket
1/2" socket	3/4" box wrench
1/2" box wrench	15/16" box wrench
9/16" box wrench	15/16" deep well socket

TORQUE CHART FOOT

Bolt Nut Size	Gr. 2 	Gr. 5 	Gr. 8 
1/4-20	4-5		
5/16-18	9-11		
3/8-16	17-20	26-29	
7/16-14		42-46	60-66
1/2-13		64-72	99-100
5/8-11		127-141	179-198

Black Iron Parts List



Black Iron Parts List

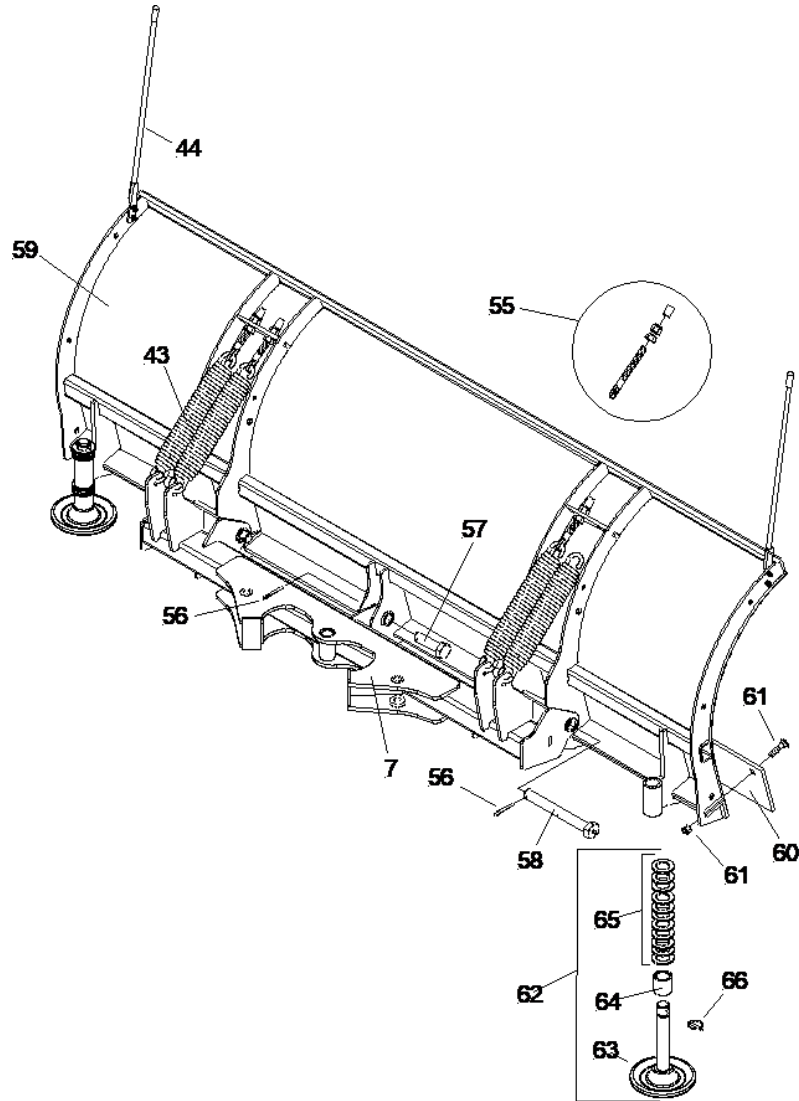
Item	Part #	QTY	Description
	41750	1	LP 7.5-9.0 T-73 Plus Mount Assy.
1	05757	1	• Lift Ram (1.13 x 12")
	07772	1	• L.H. Ram with Hose & Fittings
2	05887	1	•• Angle Ram 1.5 x 10 SAE6
3	22866	1	•• SAE Mx3/8 90 Degree Elbow
4	22885	1	•• Hose 1/4 x 54"
	07783	1	• R.H. Ram with Hose & Fittings
2	05887	1	•• Angle Ram 1.5 x 10 SAE6
3	22866	1	•• SAE Mx3/8 90 Degree Elbow
5	22921	1	•• Hose 1/4 x 38" FEM ORF SWVL
6	11844	1	• Receiver Tube Cap 2" ID
7	14214	1	• Pivot Bar
8	14290	2	• Horiz Hyd Cover BRKT
9	14596	1	• Horiz Hyd FRT CVR T-73
10	14700	1	• Adjustable Clevis
11	14707	1	• A-Frame (Straight Plow)
12	16033	1	• Hyd T-73 Horiz 12V (Unit Only)*
13	18969	2	• Spring Handle
14	18973	4	• Spring
15	18975	1	• Lift Frame
16	18982	1	• Rear Cover
17	18992	2	• Handle Pin Assy
18	18993	1	• Safety Latch L.H.
19	18994	1	• Safety Latch R.H.
20	18995	2	• Pin Spring
21	20027	4	• Bolt H 5/16 -18 x 1 G2 ZN
22	20045	2	• SCO. HD. C.S. 5/16-18 x 3 1/2
23	20046	2	• Shoulder Bolt 3/8 -16
24	20049	6	• Bolt H 3/8 x 1 G2 ZN
25	20053	4	• SHCS 3/8 - 16 x 2
26	20102	2	• Bolt H 1/2 -13 x 3 1/4 G5 ZN
27	20146	1	• Bolt H 5/8 11 x 3 1/4 G5
28	20150	3	• Bolt H 5/8-11 x
29	20304	2	• Locknut ESNA 5/16-18 ZN PL
30	20314	12	• Locknut ESNA ZN PL
31	20307	2	• Locknut ESNA 1/2-13 ZN PL
32	20309	4	• Lockout ESNA 5/8-11 ZN PL
33	20352	4	• Washer Flat 5/16 ZN
34	20355	2	• Washer Flat 1/2 ZN
35	20365	2	• Washer Flat 1/2 Nylon
36	20420	2	• PIN COT 1/4 x 2 Runner Assy ZN
37	22436	2	• 1" DIA PIN 1 x 3
38	22866	2	• Elbow 90, 3/8 SAE-MX 3/8 ORF-M
39	22885	1	• Hose 1/4" x 54", FEM ORF SWVL

Item	Part #	QTY	Description
40	22941	1	• Hose 3/8" x 33", FEM ORF SWVL
41	23089	1	• Toggle Harness Assy
42	15244	1	• Hyd Diode Deutsch Conn
	23039	1	• Plow Side Harness SOS
	41751	1	• Accessory Box
43	07017	4	•• Spring TRP ST/C/AG/LP/DAG/HM
44	09917	1	•• Plow Markers Kit (2)
45	22022	1	•• Jack Stand (Crank) SOS EZ
46	23025	1	•• Standard OP SYS Power Harness
47	23059	1	•• SOS HFP Vehicle Harness
48	23067	1	•• Nite Saber (LED 12V) Plow Light Kit
49	23078	1	•• DLX SOS Controller (Pistol Grip)
	41204	1	• Hardware Bag (Pivot Bar)
50	20150	2	•• Bolt H 5/8-11 x 4 1/2 GR5 ZN
51	20309	2	•• Locknut ESNA 5/8-11 Zinc PL
52	20406	1	•• PIN COT 3/16 DIA x 1 1/2 ZN
53	22274	1	•• Nut Hex 1-8 Slotted
54	22398	1	•• King Pivot Bolt 1-8x5 1/2 W/GR
	41332	1	• Hardware Bag
55	09124C	4	••Eye Bolt W/2 Nuts-1Pc
56	20406	3	•• PIN COT 3/16 DIA x 1 1/2 ZN
57	22331	1	•• Hex Head Pin 1 x 3.31
58	22375	2	•• 1 x 8.75 Pivot Pin W/Grease FIT

Parts indented are included in the carton, bag or assembly under which they are indented.

Moldboard Parts List

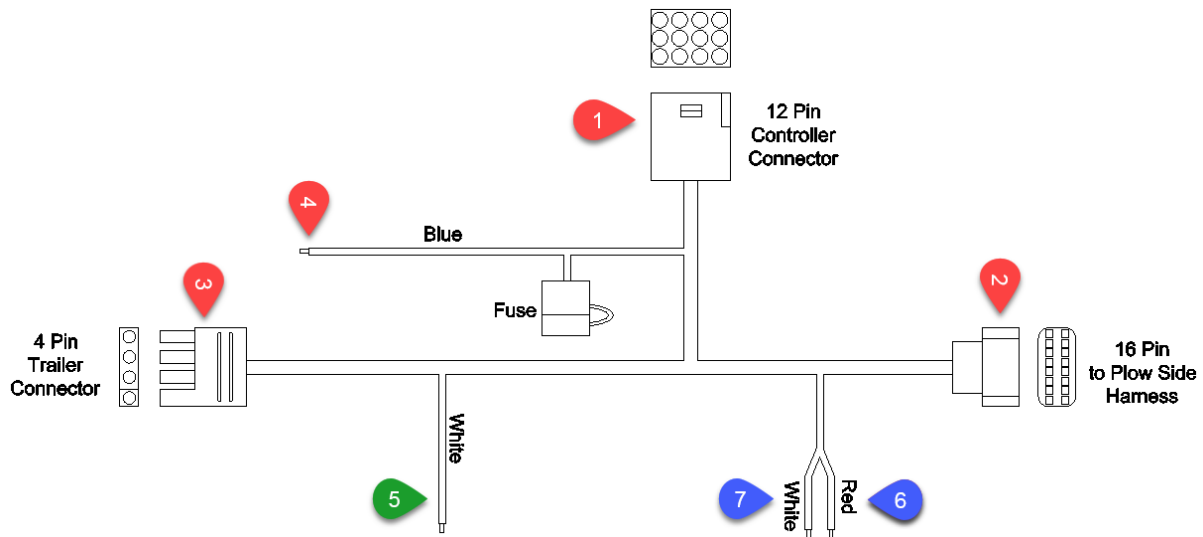
Lot Pro Steel



Lot Pro Steel Parts List

	7' 6"	8'	8' 6"	9'	Qty	Description
59	09400	09401	09402	09403	1	Moldboard Assembly
60	09797	09133	09134	07259	1	• Cutting Edge
61	08486	N/A	N/A	N/A	1	• Bolt C 1/2-13 x 1-3/4 & Locknut (Kit of 9 each)
61	N/A	08692	08692	N/A	1	• Bolt C 1/2-13 x 2 & Locknut (Kit of 10 each)
61	N/A	N/A	N/A	08318	1	• Bolt C 5/8-11 x 2-1/4 & Locknut (Kit of 12 each)
62	09362	09362	09362	09362	2	• Mushroom Shoe Casting Assy.
63	12394	12394	12394	12394	1	•• Runner Shoe Casting
64	12449	12449	12449	12449	1	•• Runner Spacer

Wiring Harnesses & Controller



Vehicle Side Harness (23059)

- 1) Route the 12 pin connector into vehicle's cab and plug into controller.
- 2) Route the 16 pin connector to the front of the vehicle and plug into the plow side harness.
- 3) Connect the 4 pin connector and plug under the hood into -Park/Turn Harness -23061, 23079, 23080- (Sold Separately) Use cable ties to ensure the harness is secured to the vehicle's frame.



Trailer Adapter Harness

- 4) The BLUE wire will connect to the vehicle's keyed accessory circuit. This is to ensure the plow turns on and off with the vehicle's ignition.

The following step is for 2015 & later GM vehicles with an alternator relay...

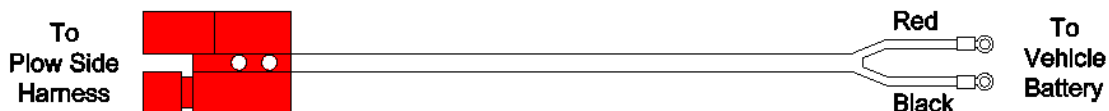
- 5) The WHITE wire will connect to 2015 & Later GM vehicles with alternator relay. See Meyer Products Service Bulletin SB252.

The following two steps are optional and may be enforced by local law which requires your vehicle lights to be off while your plow lights are on and vice versa...

- 6) Connect the RED to the HIGH beam function.
- 7) Connect the WHITE to the LOW beam function.

Power Harness (23025)

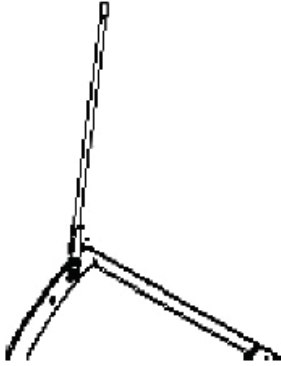
- 1) Route through the vehicle's grille.
- 2) Connect the terminals to the vehicle's battery. Red to Positive and Black to Negative.



Plow Assembly & Adjustments

Plow Markers

Attach Plow Markers (44) to moldboard using 5/16-18 x 1" Bolt, 5/16" Flatwasher, and 5/16-18 Locknut. (All the Hardware is included in the Plow Markers Kit 09917)



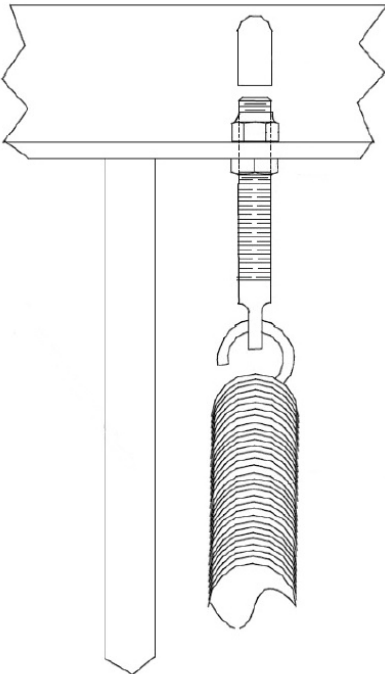
Trip Spring Adjustment

Attach Eye Bolts to Moldboard and Trip Springs to Pivot Bar, making certain locknuts are positioned as shown below.

Make certain each Eye Bolt is in a vertical position as shown below so that the Eye Bolt and Trip Spring hinge properly when the Moldboard trips.

Note: Proper tension is attained when the Trip Spring coils just begin to separate and then tightening top locknut four additional turns. Tighten bottom locknut to secure Eye Bolt in position.

Install Eye Bolt Caps over exposed threads.



Nite Saber LED Lights

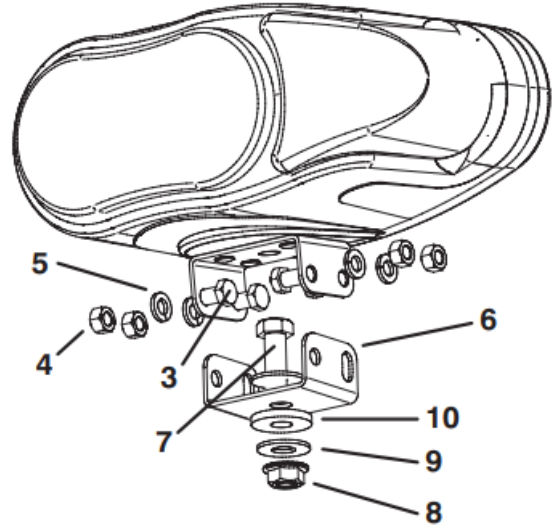
See separate Nite Saber LED instructions for further information.

Mount the lights as shown below.

Connect both male ends from the snow plow light to the female ends on the Plow Side Harness. Ensure all wiring harnesses are secured against the lift frame.

Check snow plow lights and blinkers to ensure proper operation. If operating in reverse (i.e. driver side blinking instead of passenger side), reverse the harness connections.

Note: All electrical connections should have both ends coated with a dielectric grease (Meyer Part # 15632) prior to final installation. This will ensure a good connection and help in preventing corrosion.



Nite Saber LED Parts List

Item	Part	QTY	Description
1	23067	1	Nite Saber LED Kit
-	23066	1	• Passenger Side LED
-	23065	1	• Driver Side LED
2	08126	1	• Hardware Bag
3	----	8	•• Hex Bolt 3/8" x 3/4", SS
4	----	8	•• Hex Nut 3/8", SS
5	----	8	•• Lock Washer 3/8", SS
6	----	2	•• Metal Bracket, Bottom
7	----	2	•• Bolt 1/2"- 13 x 1 1/12", SS
8	----	2	•• Hex Lock Nut 1/2" - 13, SS
9	----	4	•• Flat Washer 1/2", SS
10	----	2	•• Neoprene Grommet 1/2"

Parts indented are included in the carton, bag, or assembly under which they are indented.

Plow Assembly & Adjustments

Hydraulic Fluid Level

Top off the unit to the fill line on the reservoir with Meyer M-1 Hydraulic Fluid.

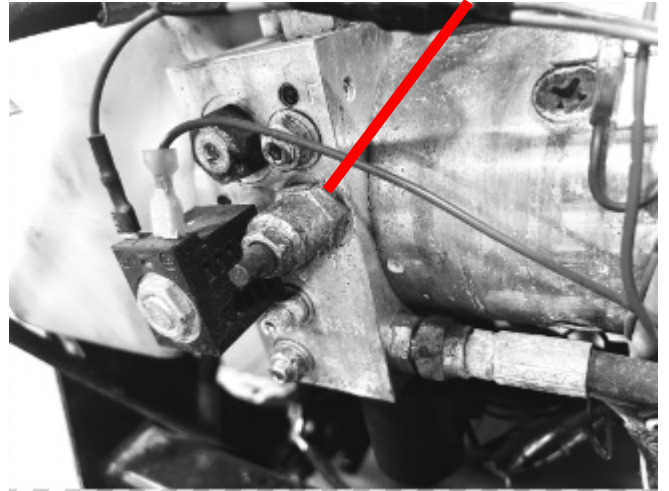
NOTE: Proper fluid level is to the fill line on the reservoir. It must be checked with the lift cylinder fully retracted.



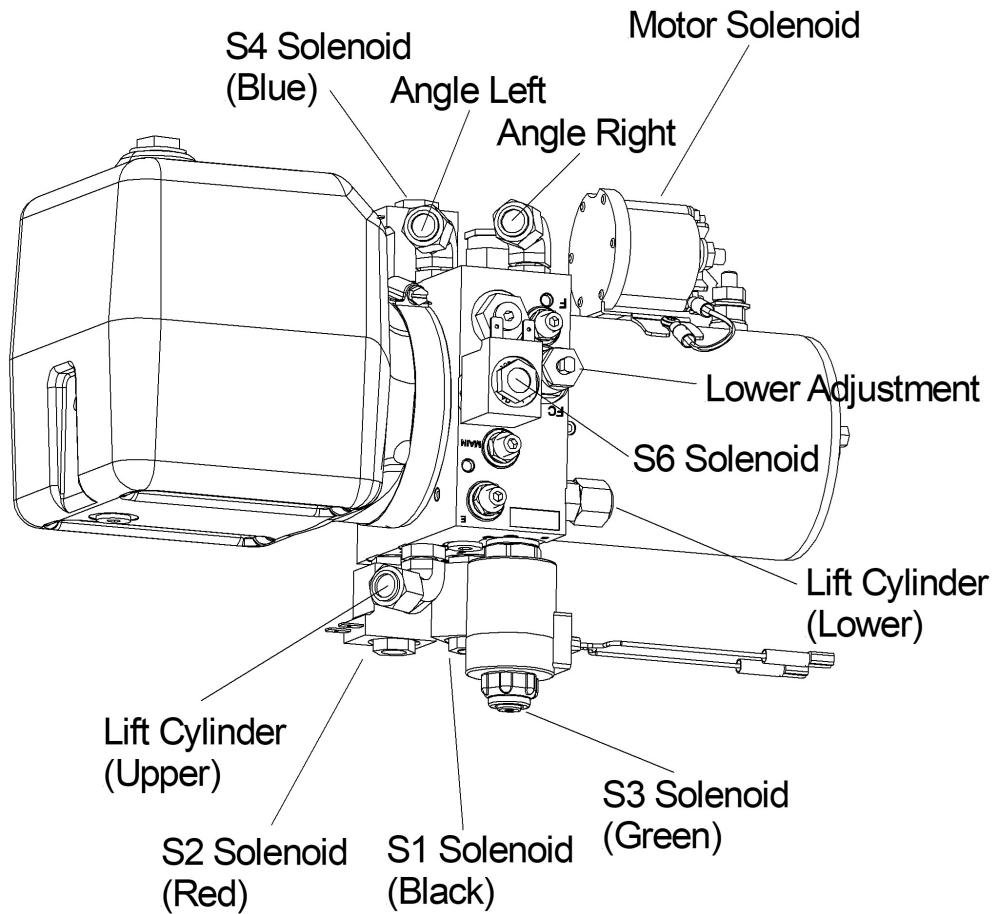
Drop Speed Adjustment

Drop Speed Adjustment: Loosen jam nut and turn knob clockwise to slow the drop of the plow and counter clockwise to speed the drop of the plow. Tighten jam nut.

Drop Speed Adjustment



16033 T-73 Hydraulics



16033 T-73 Hydraulics

T-73	Mount	Dis-Mount	Raise	Lower	Angle Left	Angle Right
Motor	X	X	X	X	X	X
S1		X	X		X	
S2						
S3	X	X	X	X		
S4					X	X
S6		X				

T-73 Hydraulics Testing Tips

**Before any troubleshooting is started, make certain the following conditions are met.*

1. The moldboard is pointing straight ahead. If the unit is disabled, this can often be done by connecting the hose from the left cylinder into the right cylinder and pushing the snow plow by hand.
2. Check to ensure the power angling cylinders are installed correctly.
3. The solenoid coils must be on their proper valve: S3-coil (green and brown wire), the S2-coil (red and brown wire) the S1-coil (black and brown wire) and the S4-coil (blue and brown wire).
4. The electrical installation must have been made according to installation instructions supplied by Meyer Products LLC.

****Testing** **CAUTION** *Keep a Safe Distance from Front of Plow When Performaing Maintenance to Avoid Injury.*

Many tests do not require removing the Power Unit from the vehicle.

1. Use a screwdriver or other small tool to check for magnetism of solenoid coils (S1,S2, S3, S4 and S6). Place the tool on the coil and have an assistant operate the switch. You should feel magnetic attraction.
2. Use a test light or volt meter to determine whether there is power at harness or T-73 controller.
3. When determining Amp draw of motor, always obtain the highest value possible, i.e., at maximum raise or angle with motor running.
4. Proper rotation for motor is indicated by an arrow on the top of the pump.
5. The pump shaft (all models) of a good pump can be turned smoothly using two fingers. If it cannot be turned easily, the pump is too tight and must be replaced.
6. Pump pressure can be measured at an angle hose (note pressure at full angle) or in the pressure filter port (an adapter is necessary for the filter port).
7. If hydraulic system is contaminated with oil or a substance other than Meyer Hydraulic Fluid, it is recommended that the hydraulic unit, power angling rams and hoses be drained and flushed clean with Meyer M-2 Flush Fluid. The system should then be refilled with Meyer M-1 Fluid.

T-73 Hydraulic Trouble Shooting Guide

*****THESE CHARTS ARE INTENDED TO BE USED AS AN AID IN DIAGNOSING MEYER HYDRAULIC POWER UNITS. THEY ARE NOT A SUBSTITUTE FOR FACTORY TRAINING AND EXPERIENCE. BE CERTAIN TO READ THE GENERAL INFORMATION AND TESTING TIPS SECTIONS BEFORE ATTEMPTING ANY TROUBLESHOOTING. ADDITIONAL DETAILED INFORMATION AS WELL AS ALL ELECTRICAL SCHEMATICS MAY BE FOUND IN SERVICE MANUALS AT WWW.MEYERPRODUCTS.COM.**

16033 T73 Hydraulics Trouble Shooting

Condition	Possible Cause	Correction
Plow does not lift or lifts slowly. Motor operates	<ol style="list-style-type: none"> 1. Low hydraulic fluid level. 2. Discharged battery. 3. Bad "S6" cartridge. 4. No current to "S6" coil. 5. Malfunctioning motor. 6. Malfunctioning pump. 	<ol style="list-style-type: none"> 1. Add fluid to proper level 2. Recharge battery. 3. Replace "S6" cartridge. 4. Locate malfunction and repair. 5. Repair or replace motor. 6. Replace pump.
Plow does not lower.	<ol style="list-style-type: none"> 1. Bad "S3" cartridge. 2. No current to "S3" coil. 3. Bad "S3" coil. 	<ol style="list-style-type: none"> 1. Replace "S3" cartridge. 2. Locate malfunction and repair. 3. Replace "S3" coil.
Plow does not angle left.	<ol style="list-style-type: none"> 1. Bad "S1" or "S4" cartridge. 2. No current to "S1" or "S4" coil. 3. Bad "S1" or "S4" coil. 	<ol style="list-style-type: none"> 1. Replace "S1" or "S4" cartridge. 2. Locate malfunction and repair. 3. Replace "S1" or "S4" coil.
Plow does not angle right.	<ol style="list-style-type: none"> 1. Bad "S4" cartridge. 2. No current to "S4" coil. 3. Bad "S4" coil. 	<ol style="list-style-type: none"> 1. Replace "S4" cartridge. 2. Locate malfunction and repair. 3. Replace "S4" coil.
Plow will not hold in angled position	<ol style="list-style-type: none"> 1. Air in cylinders and hoses. 2. Leaking dual pilot check valve. 3. Leaking crossover relief valve. 4. Crossover relief valve opening at too low a pressure. 	<ol style="list-style-type: none"> 1. Bleed cylinders and hoses. 2. Replace pilot check valve. 3. Replace crossover relief valve. 4. Replace crossover relief valve
Motor does not operate	<ol style="list-style-type: none"> 1. Discharged or defective battery. 2. Loose/corroded electrical connections. 3. Inoperative starter solenoid. 4. Malfunctioning control switch. 5. Malfunctioning motor. 	<ol style="list-style-type: none"> 1. Recharge or replace battery. 2. Clean and tighten electrical connections. 3. Replace starter solenoid. 4. Replace control switch. 5. Repair or replace motor.
Plow does not lower	<ol style="list-style-type: none"> 1. No current to "S3" coil. (green and brown wire) 2. "S3" cartridge jammed in closed position. 3. Inoperative "S3" coil. (black and brown wire) 	<ol style="list-style-type: none"> 1. Locate malfunction and repair. 2. Clean or replace "S3" cartridge. 3. Replace "S3" coil. (green and brown wire)
Plow creeps down	<ol style="list-style-type: none"> 1. Leaking "S3" cartridge. 2. Leaking "S3" cartridge O-ring. 3. Leaking DA Lift Cylinder. 	<ol style="list-style-type: none"> 1. Clean or replace "S3" cartridge. 2. Replace O-ring. 3. Replace DA Lift Cylinder

Mounting Plow

NOTE: Steps for Mounting Plow with T-73 Hydraulic Unit Only

- Next Generation Plow Attachment System
- Spring Tension Release Pins Quickly, Latch with the Turn of the Handle.
- Mount/Dismount from Oneside of the Plow.
- Hydraulic Switch Replaces the Classic Manual Design for Easy Mount/Dismount.
- A Solid Cylinder in place of Lift Chains Stays Rigid during use Minimizing "Bouncing" That can lead to Plow Truck Damage.
- Conveniently Stores Jack-Stand for use Whenever you Need It.

"Ready to Plow in 3 Steps" -In less than 50 Seconds.

- Connect Electrical Components
 - Flip the Handles to Lock the Pins
 - Flip the Hydraulic Switch
- *Remove Jack-Stand from the A-Frame/Connect to Lift Frame for Accesible Storage.

-Mounting Process-



* Prior to Mounting Plow to Vehicle Assure the Jack-Stand is Secured to the A-frame.



** After Mounting Steps are Complete, Remove the Jack-Stand from the A-Frame & Secure it to the Lift Frame.

3 Step Process...



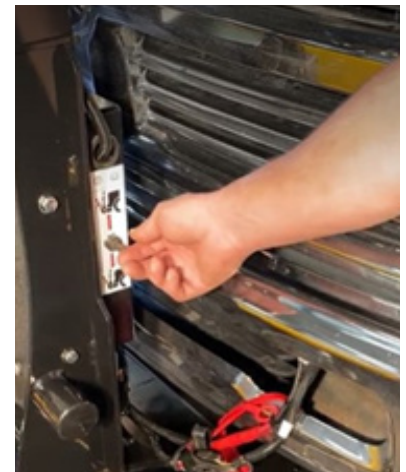
1.) Connect All Electrical Components.



*Open/Unlocked



*Locked



3.) Flip the Hydraulic Switch. Toggle Up to Mount.

-Dismounting Process-



** Prior to Dismounting Plow from Vehicle
Remove the Jack-Stand from the Lift
frame, & Secure it to the A-Frame.*



*** After Dismounting Steps are Complete, the
Plow will be Parked with Jack-Stand Attached to
A-Frame until Ready for use again.*



**Locked*



**Open/Unlocked*

*1.) Flip the Handles to Unlock the Pins.
Swinging Up & Away from Lift Frame to
Unlock Position.*



*2.) Flip the Hydraulic Switch.
Toggle Down to Dismount.*



3.) Disconnect All Electrical Components.

PRE-DELIVERY INSPECTION

Vehicle Make: _____

Vehicle Model: _____

Vehicle Year: _____

Vehicle VIN#: _____

Vehicle FGAWR: _____

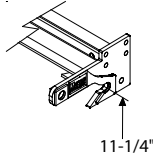
Installing Company: _____

Hydraulic Serial Number: _____

Moldboard Serial Number: _____

- All bolts torqued to specification
- Suspension interference
- Clevis height in inches _____
- Trip springs adjusted
- Lift Chain Adjusted
- Check for hydraulic fluid leaks
- Hydraulic fluid Level
- Dielectric grease applied to ALL electrical connections
- All wires secured
- Plow Stops Adjusted (plow cannot bump hyd. unit)

Clevis height



- Controller Operation
- Plow Operation Up
- Plow Operation Left
- Plow Operation Right
- Plow Operation Down
- Plow Light Blinker Left & Right Operation
- Plow Light Low & High Beam Operation
- Plow Lights Adjusted
- Plow Mount/Dismount reviewed with Customer
- Plow Operation reviewed with Customer
- Warranty/Registration/Owners Manual

Notes:

Inspected By: _____ W.O.#: _____ Date: _____

Customer Signature: _____

Serial Number Decal Locations

Moldboard serial tags are attached to the back of the moldboard, the outer rib of the moldboard, and on the black iron near the hydraulic unit.

Note: SV3 Plows use the same serial number for both hydraulic and moldboard.



Registration

You must register your plow online to be eligible for the 5 year warranty. Please visit...

meyerproducts.com/product-registration

Please note your registration ID for future reference.

Registration ID _____