

## PARTS & INSTALLATION INSTRUCTIONS

### MEYER SNOW PLOW MOUNTING

### 1992 & LATER FORD F 350 CAB CHASSIS 4x4 MODEL

#### IMPORTANT NOTICE

**End user must be given this instruction sheet prior to delivery of this Snow Plow.**

The equipment you have just purchased should only be used on vehicles equipped with the Manufacturer's Snow Plow Preparation Packages. Snow Plowing without the original Snow Plow Preparation Package may damage your vehicle and the added weight to the equipment may impair the operation and control of the vehicle. Snow Plowing with a vehicle that the manufacturer does not recommend for that purpose may void your new vehicle warranty. If your vehicle is not originally equipped with the Snow Plow Package, additional parts may be necessary before snow plowing. Owners of these vehicles should consult their dealers before purchase or installation of such parts. CAUTION: the installation, on any vehicle, of these parts is not a full substitute for the original equipment Snow Plow Preparation Package.

**Warning: Lift Arm extends beyond bumper of vehicle. To minimize damage from a front-end collision, Lift Arm should be removed from vehicle when Snow Plow is removed.**

#### PARTS LIST

Item	Part No.	Qty.	Description
	17106	1	MOUNTING CARTON
1	11530	1	• Clevis Frame
2	11524	1	• Side Member R. H.
3	11525	1	• Side Member L. H.
4	11532	1	• R.H.Strap
5	11533	1	• L.H.Strap
6	11396	1	• Brace Connector
7	10514	1	• Lift Arm
8	11544	2	• Receiver Tube Cap
	13615	2	• Lift Frame Stops
	08668	1	• HARDWARE BAG
9	11006	2	•• Hinge Pin
10	14744	2	•• Spacer
11	22159	8	•• Bolt H 7/16-14 x 2" Gr.8
12	20139	2	•• Bolt H 5/8-11 x 1-1/2" Gr.5
13	20140	6	•• Bolt H 5/8-11 x 1-3/4" Gr. 5
14	20141	2	•• Bolt H 5/8-11 x 2" Gr.5
15	20144	1	•• Bolt H 5/8-11 x 2-3/4" Gr. 5
16	20146	2	•• Bolt H 5/8-11 x 3-1/4" Gr. 5
17	20150	2	•• Bolt H 5/8-11 x 4-1/2" Gr.5
18	20162	2	•• Bolt H 3/4-10 x 1-1/2" Gr.5
19	20306	8	•• Locknut Esna 7/16-14
20	20309	15	•• Locknut Esna 5/8-11
21	20310	2	•• Locknut 3/4-10
22	20354	8	•• Flatwasher 7/16"
23	20357	2	•• Flatwasher 5/8"
24	20359	2	•• Flatwasher 3/4"
25	21984	2	•• Hair Pin Cotter
26	22135	2	•• Handle Nut
27	11255	1	LIFT FRAME (Tubular)
15" Sector			
Item	Part No.	Qty.	Description
	16504	1	SECTOR -A-FRAME CARTON
	12793	1	• Sector
28	13608	1	• A- Frame
	07017	3	• Trip Spring
	09916	1	• Marker Kit
	08341	1	• PLOW HARDWARE BAG
	09119	2	•• Pivot Pin w/Cotter
29	11101	2	•• Hinge Pin
30	22083	2	•• Linch Pin
	09125	1	•• King Bolt w/Locknut
	09124	4	•• Eye Bolt w/Locknuts

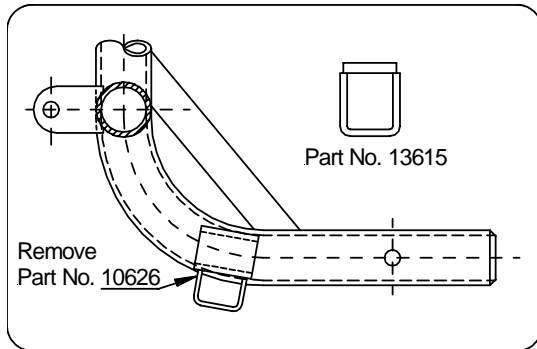
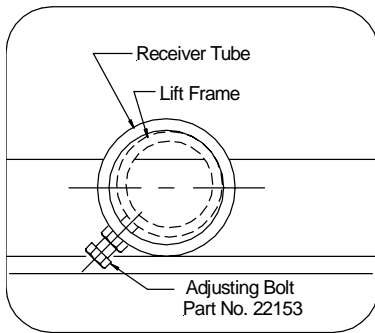
Parts indented are included in the assembly under which they are indented.

Meyer Products reserves the right, under its continuing product improvement program, to change construction or design details, specifications and prices without notice or without incurring any obligation.



## INSTALLATION INSTRUCTIONS

- A. Remove bolts from shock absorber brackets. Retain all hardware they will not be re-used.
- B. Position side members (2&3) between vehicle frame and shock absorber brackets. On 1994 vehicles, it will be necessary to ream all four of the 5/16" diameter holes in each sidemember to 1/2" diameter. On 1992 and later vehicles, reaming of these holes is not necessary. Attach sidemembers at shock absorber bracket using 7/16-14 x 2" bolts (11) and locknuts (19). Attach sidemembers to vehicle frame - back hole using 3/4-10 x 1-1/2" bolt (18), flatwasher (24) and locknut (20). Attach front hole using 5/8-11 x 1-1/2" bolt (12) and handle nut (26).
- Make certain side members are flat against bottom of vehicle frame before tightening to proper torque.**
- C. Remove bumper and bumper nuts (\*).
- D. Using hole "A" in vehicle frame, position clevis frame (1) behind vehicle bumper brackets. Attach to vehicle frame using 5/8-11 x 4-1/2" bolt (17), spacer (10), flatwasher (23) and locknut (20). Re-install bumper and bumper nuts (\*).



### TORQUE CHART FOOT LBS.

Bolt Nut Size	Gr. 2	Gr. 5	Gr. 8
1/4 - 20	4 - 5		
5/16 - 18	9 - 11		
3/8 - 16	17 - 20	26 - 29	
7/16 - 14		42 - 46	60 - 66
1/2 - 13		64 - 72	90 - 100
5/8 - 11		127 - 141	179 - 198
3/4 - 10		227 - 251	

- E. Attach side strap (4 & 5) to clevis frame (1) using 5/8-11 x 1-3/4" bolt (13) and locknut (20). Attach side straps and brace angle (6) to side members using 5/8-11 x 2" bolts (14) and locknuts (20). Attach side straps to side members using 5/8-11 x 1-3/4" bolts (13) and locknut (20).

**Note: Before tightening the fasteners, the clevis frame should be pushed back as far as possible under vehicle.**

- F. Tighten all fasteners to their proper torque. Tighten bolts in the same order they were assembled to the vehicle.

**Important Notice: Prior to installation of the lift frame (27), it will be necessary to identify the lift frame being installed. Current production lift frames have additional stops (Part No. 10626) tack welded to the existing stops. (See illustration.) Earlier production lift frames will not have these stops. Depending upon the S.A.F. Carton being installed, additional stops may need to be added or removed.**

- G. When installing S.A.F. Carton 16504, remove the stops (10626) from lift frame. Replace with Part No. 13615 stops. Weld stops to lift frame. See Illustration.

**Note: Before installing lift frame tubing to clevis frame, liberally coat ends of lift frame with chassis grease / anti-seize lubricant.**

- H. Install Lift Frame (27) into the tubes on the clevis frame. Turn adjusting bolts in until contact is made with lift frame.

**Caution: Do not over tighten adjustment bolts. Adjust bolts for minimum clearance between lift frame and receiver tubes while still allowing for ease of lift frame removal. See illustration. Secure lift frame (27) to clevis frame (1) using hinge Pins (9) and hair pin cotters (25).**

- J. Attach lift arm (7) to lift frame (27) using 5/8-11 x 3-1/4" bolt (16) and locknut (20). Mount Hydraulic unit to lift frame using 5/8-11 x 3-1/4" bolt (16) and locknut (20), and to lift arm (7) using 5/8-11 x 2-3/4" bolt (15) and locknut (20). **(SEE WARNING)**

- K. Install hydraulic system and snow plow lights per separate instructions.

- M. Pre-Assemble Moldboard Assembly, A-Frame (28), Sector, ect., per separate instructions.

- N. Attach the A-Frame chain to the Lift Arm (7) allowing sufficient slack to enable the Moldboard to follow ground contour while plowing.

**Note: When the lift frame module (27) is removed from the vehicle, the insides of the clevis frame (1) receiver tubes and outside ends of the lift frame should be coated with chassis grease/anti-seize lubricant and the protective receiver tube caps (8) install over the clevis frame receiver tubes.**

Meyer Products assumes no responsibility for installations not made in accordance with these instructions.