

PARTS & INSTALLATION INSTRUCTIONS

MEYER SNOW PLOW MOUNTING

1966 THRU 1976 FORD F100

1975 THRU 1979 FORD F150 4x4

1978 THRU 1979 FORD BRONCO

IMPORTANT NOTICE

End user must be given this instruction sheet prior to delivery of this Snow Plow.

The equipment you have just purchased should only be used on vehicles equipped with the Manufacturer's Snow Plow Preparation Packages. Snow Plowing without the original Snow Plow Preparation Package may damage your vehicle and the added weight to the equipment may impair the operation and control of the vehicle. Snow Plowing with a vehicle that the manufacturer does not recommend for that purpose may void your new vehicle warranty. If your vehicle is not originally equipped with the Snow Plow Package, additional parts may be necessary before snow plowing. Owners of these vehicles should consult their dealers before purchase or installation of such parts. CAUTION: the installation, on any vehicle, of these parts is not a full substitute for the original equipment Snow Plow Preparation Package.

Warning: Lift Arm extends beyond bumper of vehicle. To minimize damage from a front-end collision, Lift Arm should be removed from vehicle when Snow Plow is removed.

PARTS LIST

Item	Part No.	Qty.	Description
	17017	1	MOUNTING CARTON
1	10368	1	• Lift Frame
2	10470	1	• Side Member R.H .
3	10469	1	• Side Member L .H .
4	10417	1	• Clevis Frame
5	10411	2	• Clevis Frame Brace
6	10004	1	• Bumper Support R .H .
7	10005	1	• Bumper Support L.H .
8	10514	1	• Lift Arm
9	10461	2	• Plate Stop
	08121	1	• HARDWARE BAG
10	10323	2	•• Spacer
11	20140	6	•• Bolt H 5/8-11 x 1-3/4
12	20141	2	•• Bolt H 5/8-11 x 2
13	20142	2	•• Bolt H 5/8-11 x 2-1 /4
14	20144	1	•• Bolt H 5/8-11 x 2-3/4
15	20147	2	•• Bolt H 5/8-11 x 3-1/2
16	20164	2	•• Bolt H 3/4-10 x 2
17	20166	2	•• Bolt H 3/4-10 x 2-1/2
18	20167	2	•• Bolt H 3/4-10 x 2-3/4
19	20309	13	•• Locknut 5/8-11
20	20310	6	•• Locknut 3/4-10
21	20357	8	•• Flatwasher 5/8
22	20359	2	•• Flatwasher 3/4
	16288	1	SECTOR & A-FRAME CARTON
	12326	1	• Sector
	13306	1	• A-Frame
	07017	3	• Trip Spring
	09916	1	• Marker Kit
	08166	1	• PLOW HARDWARE BAG
	09119	2	•• Pivot Pin w/Cotter Pin
	11101	2	•• Hinge Pin
	21984	2	•• Hair Pin Cotter
	09122	1	•• King Bolt w/Locknut
	09124	3	•• Eye Bolt w/Locknuts

Parts indented are included in the carton, bag or assembly under which they are indented.

Meyer Products reserves the right, under its continuing product improvement program, to change construction or design details, specifications and prices without notice or without incurring any obligation.

GENERAL INFORMATION

CAUTION: Always disconnect battery before beginning installation.

DO NOT BURN holes or **WELD** vehicle frame. This may cause frame failure.

After first use, retighten all mounting bolt connections to specified torque. All mounting bolt connections to be checked periodically for tightness.

Locknuts are furnished **DO NOT** tighten bolts and nuts until installation is complete (unless otherwise specified), then be sure to tighten all attaching parts per specified torque chart.

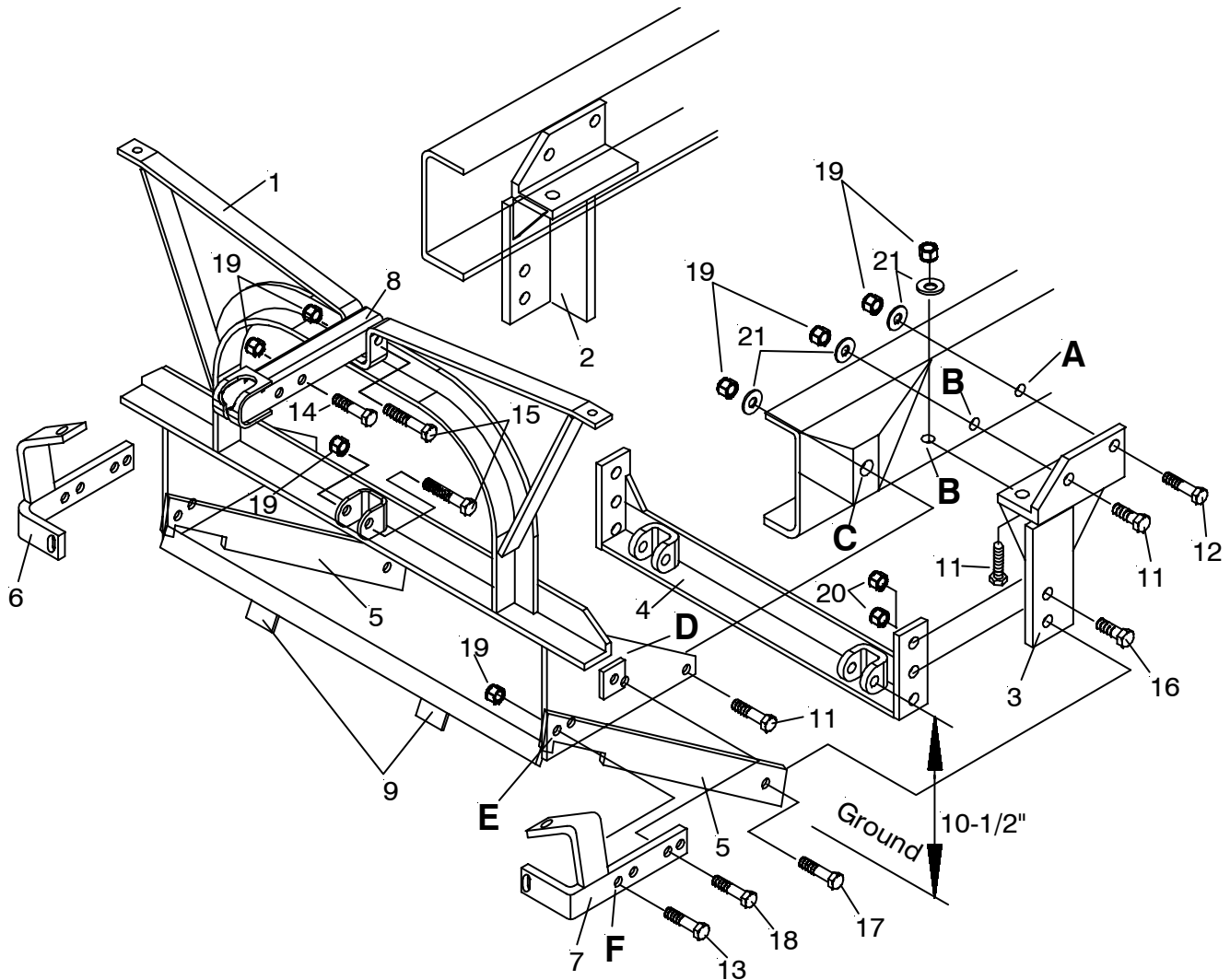
NOTE: It is important that the Meyer harness, all wires from the Meyer light switch, and all other electrical wires be routed around hot or moving engine parts, and any sharp metal. Protection must be provided to guard against wire damage at these points. All excess or loose wires must be neatly secured using wire ties.

Check contents against the parts list to determine all are correct and included, and also to familiarize yourself with them.

SAFETY PRECAUTIONS should be used when **Hydraulic Unit is in OPERATION** and plow is in a **RAISED** position. **Lower plow to ground when vehicle is PARKED.**

OVERHAUL and **SERVICE INFORMATION** are covered on separate instructions.

Follow these instructions explicitly. Warranty does not apply to a Meyer product which has been negligently or improperly assembled or installed.






INSTALLATION INSTRUCTIONS

- A. Remove front bumper, retaining all original parts.
- B. Position Side Members (2 & 3) to the vehicle frame and secure at hole "A" with 5/8 x 2 bolt (12), flat washer (21) and locknut (19) on the inside of vehicle frame. Mark and Drill 11/16" Dia. holes in side and bottom flanges of frame rails at locations "B" and attach with 5/8 x 1-3/4 bolt (11), flatwasher (21) and locknut (22) on inside of vehicle frame.
- C. Attach the Clevis Frame (4) to the Side Members (2 & 3) using the combination of holes to obtain the dimension of 10-1/2" as shown. Clevis Frame to be parallel to the ground. Secure with 3/4 x 2 bolts (16) and locknuts (20).
- D. Bolt the Lift Frame (1) to the vehicle frame at hole "C" with 5/8 x 1-3/4 bolts (11), flat washers (21) and locknuts (19). Attach Bumper Supports (6 & 7) to the Lift Frame (1) at hole "D" and position Spacer (10) between vehicle frame and Lift Frame side Plate at hole "D". Secure with 3/4 x 2-3/4 bolts (18), flatwashers (22) and locknuts (20).
- E. Bolt Clevis Frame Braces (5) to the Side Members (2 & 3) and Clevis Frame (4) using 3/4 x 2-1/2 bolts (17) and locknuts (20). Position Clevis Frame Braces (5) on inside of Lift Frame (1) side plate aligning the hole in Clevis Frame Brace (5) with hole "E". Align hole "F" in the Bumper Supports (6 & 7) with hole "E" and secure with 5/8 x 2-1/4 bolts (13) and locknuts (19).
- F. Reinstall bumper to Bumper Supports (6 & 7) with original ports.
- G. Attach Lift Arm (8) to Lift Frame (1) with 5/8 x 3-1/2 bolt (15) and locknut (19).
- H. Before tightening Lift Frame bolts, pull top of Lift Frame forward to take out the slack in the bolt holes. Tighten all bolts per specified torque chart.
- I. Pre-assemble Moldboard Assembly, A-Frame, Sector, etc., per separate instructions.
- J. Connect the A-Frame (to the Clevis Frame (4) using Hinge Pins and Spring Clips.
- K. Hook the A-Frame chain to the Lift Arm (8) allowing sufficient slack to enable the Mold board to follow ground contour while plowing.
- L. When installation is completed, raise plow checking if hose guards contact Lift Frame stop angle. If hose guards do not contact stop angle, weld Stop Plates (9) to Lift Frame stop angle to contact hose guards.

NOTE: 1/4 x 45 minimum fillet welds to be sound and have good penetration.

TORQUE CHART FOOT LBS.

Bolt Nut Size	Gr. 2 	Gr. 5 	Gr. 8 
1/4 - 20	4 - 5		
5/16 - 18	9 - 11		
3/8 - 16	17 - 20	26 - 29	
7/16 - 14		42 - 46	60 - 66
1/2 - 13		64 - 72	90 - 100
5/8 - 11		127 - 141	179 - 198
3/4 - 10		227 - 251	

Meyer Products assumes no responsibility for installations not made in accordance with these instructions.