



PARTS & INSTALLATION INSTRUCTIONS

MEYER SNOW PLOW MOUNTING

1997 JEEP CHEROKEE 4X4

IMPORTANT NOTICE

End user must be given this instruction sheet prior to delivery of this Snow Plow.

The equipment you have just purchased should only be used on vehicles equipped with the Manufacturer's Snow Plow Preparation Packages. Snow Plowing without the original Snow Plow Preparation Package may damage your vehicle and the added weight to the equipment may impair the operation and control of the vehicle. Snow Plowing with a vehicle that the manufacturer does not recommend for that purpose may void your new vehicle warranty. If your vehicle is not originally equipped with the Snow Plow Package, additional parts may be necessary before snow plowing. Owners of these vehicles should consult their dealers before purchase or installation of such parts. CAUTION: the installation, on any vehicle, of these parts is not a full substitute for the original equipment Snow Plow Preparation Package.

Warning: Lift Arm extends beyond bumper of vehicle. To minimize damage from a front-end collision, Lift Arm should be removed from vehicle when Snow Plow is removed.

PARTS LIST

Item	Part No.	Qty.	Description
	18084DP	1	MOUNTING CARTON
1	11410	1	• Clevis Frame
2	11413	1	• L.H. Side Plate
3	11414	1	• R.H. Side Plate
4	10514	1	• Lift Arm
5	11462	2	• Receiver Tube Cap
--	12978	2	• Trip Spring
--	13778	1	• A-Frame
--	12959	1	• Pivot Bar
--	22064	1	• 6'4" pc. Convolute Tube 3/8" I.D.
	08680	1	• HARDWARE BAG
6	11006	2	•• Hinge Pin
7	11587	2	•• Clip
8	11565	2	•• Bracket (Tow Hook Reinforcement)
9	11566	1	•• R.H. Clip
10	11567	1	•• L.H. Clip
11	20027	2	•• Bolt H 5/16 - 18 x 1" Gr.2
12	20072	2	•• Bolt H 7/16 - 14 x 1-1/4" Gr. 5
13	20081	1	•• Bolt H 7/16 - 14 x 3-1/2" Gr. 5
14	21967	1	•• Bolt H 7/16 - 14 x 4-1/2" Gr.8
15	20140	6	•• Bolt H 5/8 - 11 x 1-3/4" Gr.5
16	20144	1	•• Bolt H 5/8 - 11 x 2-3/4" Gr.5
17	20146	2	•• Bolt H 5/8 - 11 x 3-1/4" Gr.5
18	22065	6	•• Bolt H M-10 x 1.5P x 40mm
19	20304	2	•• Locknut Esna 5/16-18
20	20306	3	•• Locknut Esna 7/16-14
21	20309	9	•• Locknut Esna 5/8-11
22	20312	2	•• Locknut Eslock 1/4-20
23	20328	1	•• Lockwasher 7/16
24	20352	4	•• Flatwasher 5/16
25	20354	3	•• Flatwasher 7/16
26	20355	2	•• Flatwasher 1/2"
27	22077	2	•• Sleeve Nut M-14 x 2"
28	22078	2	•• Screw: Button Head Torx
29	22086	2	•• Screw: 1/4-20 Hex Head x1"
30	21984	2	•• Hair Pin Cotter
---	08852	1	• MARKER KIT
---	08157	1	• SNOW PLOW HARDWARE BAG
31	11275	1	LIFT FRAME (TUBULAR)

Parts indented are included in the assembly under which they are indented.

Meyer Products LLC reserves the right, under its continuing product improvement program, to change construction or design details, specifications and prices without notice or without incurring any obligation.

Meyer Products LLC
18513 Euclid Ave. • Cleveland, Ohio 44112-1084
Phone 486-1313 (Area Code 216)
www.meyerproducts.com • email info@meyerproducts.com



Meyer Products LLC
6 Angell Lane • Damariscotta, ME 04543-4507
Phone 563-2227 (Area Code 207)
www.meyerproducts.com • email info@meyerproducts.com

GENERAL INFORMATION

CAUTION: Always disconnect battery before beginning installation.

DO NOT BURN holes or **WELD** vehicle frame. This may cause frame failure.

After first use, retighten all mounting bolt connections to specified torque. All mounting bolt connections to be checked periodically for tightness.

Locknuts are furnished **DO NOT** tighten bolts and nuts until installation is complete (unless otherwise specified), then be sure to tighten all attaching parts per specified torque chart.

NOTE: It is important that the Meyer harness, all wires from the Meyer light switch, and all other electrical wires be routed around hot or moving engine parts, and any sharp metal. Protection must be provided to guard against wire damage at these points. All excess or loose wires must be neatly secured using wire ties.

Check contents against the parts list to determine all are correct and included, and also to familiarize yourself with them.

SAFETY PRECAUTIONS should be used when **Hydraulic Unit is in OPERATION** and plow is in a **RAISED** position. **Lower plow to ground when vehicle is PARKED.**

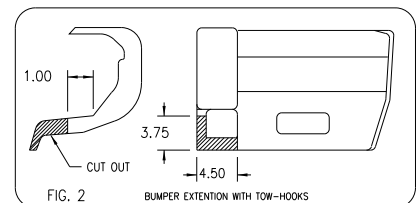
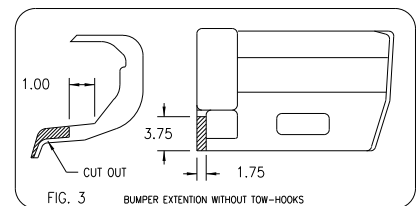
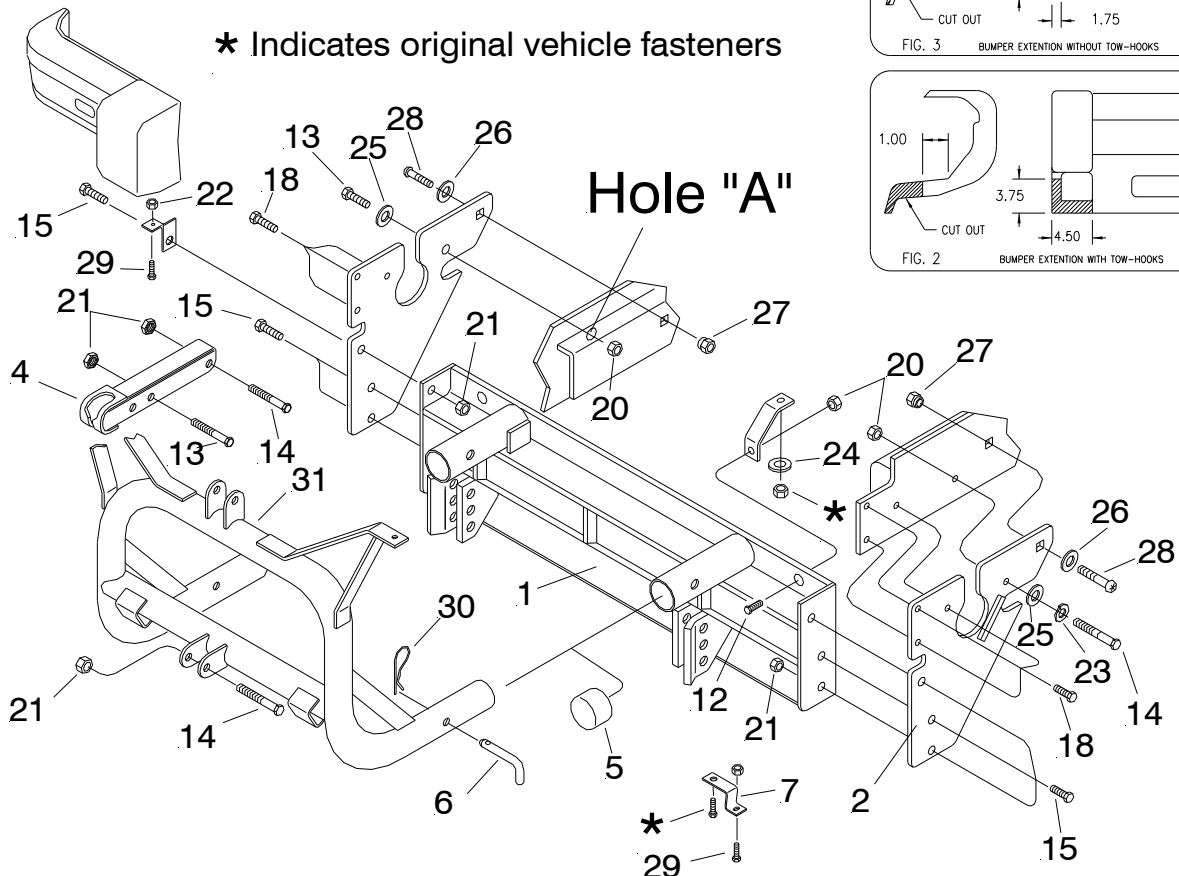
OVERHAUL and **SERVICE INFORMATION** are covered on separate instructions.

Follow these instructions explicitly. Warranty does not apply to a Meyer product which has been negligently or improperly assembled or installed.

When ordering parts, furnish **Part No., Name and Description.** Also furnish **Vehicle Model and Year, Type of Hydraulic Unit and Moldboard Size.**

NOTE: INSTALLATION OF THIS MOUNTING WILL REQUIRE CUTTING OF THE BUMPER END CAPS AND REMOVAL OF THE CENTER PORTION OF THE AIR DAM. VEHICLE SKID PLATE WILL NOT BE USED.

IMPORTANT: Vehicle must be equipped with Front Air Shocks, Kit Part No. 82202826



Meyer Products assumes no responsibility for installations not made in accordance with these instructions.




INSTALLATION INSTRUCTIONS

Vehicles with Tow Hooks

- A. Remove bumper and long bumper bracket/ tow hook support bracket Assy. Remove Tow Hooks and diagonal support bracket to front crossmember. Most hardware will be reused, diagonal support brackets should be retained for future use.
- B. Remove center portion of air dam. It will not be used.
- C. Remove bumper end caps. They will be reworked and reused. **Reference Figure 2.**
- D. Remove lower rear steering gear bolt. Retain bolt. It will not be reused.
- E. Position driver-side side plate (2) slotted hole over air dam brace and fender support brackets. Attach at steering gear box using 7/16-14 x 4-1/2" Bolt (14), Lockwasher (23) and Flatwasher (25).
- F. Position passenger-side side plate (3) slotted hole over air dam brace and fender support brackets. Using side plate as template, enlarge the hole present to 1/2" diameter (if necessary) through vehicle frame. Attach at hole "A" using 7/16-14 x 3-1/2" Bolt (13), Flatwasher (25) and Locknut (20).
- G. Re-install bumper and adjust bumper brackets to accommodate thickness of side plates (2&3).
- H. Re-attach bumper brackets and side plates at front of vehicle using M10 x 1.5P x 40mm Bolts (18). Re-attach at rear using vehicle Torx head bolts (*) and M14 x 2.0 sleeve nut (27).
- I. Install clevis frame (1) and bumper end cap clip brackets (9&10) to side plates (2&3) using 5/8-11 x 1-3/4" Bolt (15) and Locknut (21).
- J. Install brackets (8) at clevis frame (1) using 7/16-14 x 1-1/4" Bolt (12) and Locknut (20). Attach at crossmember using original vehicle bolts. (*)
- K. Clevis frame (1) should be pushed back as far as possible under the vehicle to remove slack in bolt holes. Tighten all nuts to proper torque as shown on torque chart, starting at rear and working forward in the tightening process.
- L. Attach tow hooks, without support bracket removed in Step A, using existing vehicle hardware. Attach one Clip (7) on each side at forward tow hook bolt.
- M. Rework bumper end caps as shown in Figure 2. Attach Bumper Caps to clip brackets (7) using 1/4-20 x 1" Screw (29) and Locknut (22).

Proceed with installation, Paragraph M under Vehicles with out Tow Hooks

TORQUE CHART FOOT LBS.

Bolt Nut Size	Gr. 2 	Gr. 5 	Gr. 8 
1/4 - 20 5/16 - 18 3/8 - 16 7/16 - 14 1/2 - 13 5/8 - 11 3/4 - 10	4 - 5 9 - 11 17 - 20	— 26 - 29 42 - 46 127 - 141 227 - 251	60 - 66 179 - 198

Vehicles without Tow Hooks

- A. Remove Bumper. Leave clip nuts in place. Retain bolts. They will not be reused.
- B. Remove center portion of air dam. It will not be used.
- C. Remove bumper end caps. They will be reworked and reused. **Reference Figure 3.**
- D. Remove lower rear steering gear bolt. Retain bolt. It will not be reused.
- E. Position driver-side side plate (2) slotted hole over air dam brace and fender support brackets. Attach to frame using Torx head Bolt (28), Flatwasher (25) and sleeve nut (27). Also attach at steering gear box using 7/16-14 x 4-1/2" Bolt (14), Lockwasher (23) and Flatwasher (25).
- F. Position passenger-side side plate (3) slotted hole over air dam brace and fender support brackets. Attach to frame using Torx head Bolt (28), Flatwasher (25) and sleeve nut (27). Using side plate as template, enlarge the hole present to 1/2" diameter (if necessary) through vehicle frame. Attach at hole "A" using 7/16-14 x 3-1/2" Bolt (13), Flatwasher (25) and Locknut (20).
- G. Re-install bumper and adjust bumper brackets to accommodate thickness of side plates (2&3).
- H. Re-attach bumper brackets and side plates at front of vehicle using M10 x 1.5P x 40mm Bolts (18).
- I. Install clevis frame (1) and bumper clip brackets (9&10) to side plates (2&3) using 5/8-11 X 1-3/4" bolt (15) and locknut (21).
- J. Install brackets (8) at clevis frame (1) using 7/16-14 x 1-1/4" bolt (12) and locknut (20). Attach to vehicle crossmember using 5/16-18 x 1" bolt (11), flatwasher (24) and locknut (19).
- K. Clevis frame (1) should be pushed back as far as possible under the vehicle to remove slack in bolt holes. Tighten all nut to proper torque as shown on torque chart, starting at rear and working forward in the tightening process.
- L. Rework bumper end caps as shown in Figure 3. Attach to clip brackets (9 & 10) using 1/4-20 x 1" Screw (29) and Locknut (22).
- M. Install lift frame (31) into the tubes on clevis frame (1) using hinge pins (6) and hair pins (30). Note: Before installing lift frame tubing to clevis frame, liberally coat ends of lift frame with chassis grease/anti-seize lubricant.
- N. Attach lift arm (4) to lift frame (31) using 5/8-11 x 3-1/4" bolt (17) and locknut (21). Mount Hydraulic unit to lift frame with 5/8-11 x 3-1/4" bolt (17) and locknut (21), and to lift arm (4) using 5/8-11 x 2-3/4" bolt (16) and locknut (21).
- O. Install lights making certain there is clearance behind the lights for opening the vehicle hood. Lights must be aimed to comply with Federal Regulations.
- P. Install plow light wiring per separate instructions.
- Q. Install Hydraulic unit wiring system per separate instructions.

Note: When the lift frame module (31) is removed from the vehicle, the insides of the clevis frame (1) receiver tubes and outside ends of the lift frame should be coated with chassis grease/anti-seize lubricant and the protective receiver tube caps (5) install over the clevis frame receiver tubes.