



PARTS & INSTALLATION INSTRUCTIONS
MDII™ and EZ MOUNT PLUS™
SNOW PLOW MOUNTING 17162
1999 & Later FORD F250 thru F550
4x4 MODELS
Snow Plow Preparation Package 86M

End user must be given this instruction sheet prior to delivery of this Snow Plow.

SAFETY DEFINITIONS

	This is the safety alert symbol. It is used to alert you to potential personal injury hazards. Obey all safety messages that follow this symbol to avoid possible injury or death.
	DANGER Indicates an imminently hazardous situation which, if not avoided, will result in death or serious injury.
	WARNING Indicates a potentially hazardous situation which, if not avoided, could result in death or serious injury.
	CAUTION Indicates an potentially hazardous situation which, if not avoided, may result in minor or moderate injury.
	CAUTION used without the safety alert symbol indicates a potentially hazardous situation which, if not avoided, will result in property damage.

IMPORTANT NOTICE

In conjunction with FMVSS (Federal Motor Vehicle Safety Standards) and OEM (Original Equipment Manufacturer) guidelines, Meyer Products has designed this plow package with the following guidelines:

	Installation of a snowplow may effect your new vehicle warranty. For more information consult your Vehicle Owner's Manual / Vehicle Dealer.
	The vehicle must not be operated when overloaded. In all cases, the loaded vehicle weight, including the entire snowplow system, all aftermarket accessories, driver, passenger, options, nominal fluid levels, and cargo must not exceed the front/rear Gross Axle Weight Rating (GAWR), and total Gross Vehicle Weight Rating (GVWR). These weights ratings are specified on the safety compliance certification label on the driver's side door opening. The use of rear ballast weight may be required to prevent exceeding the front GAWR.

According to the NHTSA (National Highway Traffic Safety Administration) new and untitled vehicles need to be verified by the installer that snowplow and ballast (if needed) do no exceed the front/rear GAWR and total GVWR.

	Read the Meyer Owner's Manual before operating or servicing a snowplow. FOLLOW THESE INSTRUCTIONS EXPLICITLY.
--	--

GENERAL INFORMATION

	SAFETY PRECAUTIONS should be used when Hydraulic Unit is in OPERATION and plow is in a RAISED position. Lower plow to ground when vehicle is PARKED in case of hydraulic failure.
--	---

Check contents against the parts list to determine all are correct and included, and also to familiarize yourself with them.

	Warranty does not apply to a Meyer or Diamond product which has been negligently or improperly assembled or installed.
--	--

	CAUTION: To avoid harm to vehicles electrical system always disconnect battery before beginning installation. DO NOT BURN holes or WELD vehicle frame. This may cause frame failure.
--	---

OVERHAUL and SERVICE INFORMATION are covered on separate instructions.

Meyer Products and Diamond Equipment reserves the right, under its continuing product improvement program, to change construction or design details, specifications and prices without notice or without incurring any obligation.

Meyer Products Inc.
18513 Euclid Ave. • Cleveland, Ohio 44112-1084
Phone 486-1313 (Area Code 216)
www.meyerproducts.com • email info@meyerproducts.com

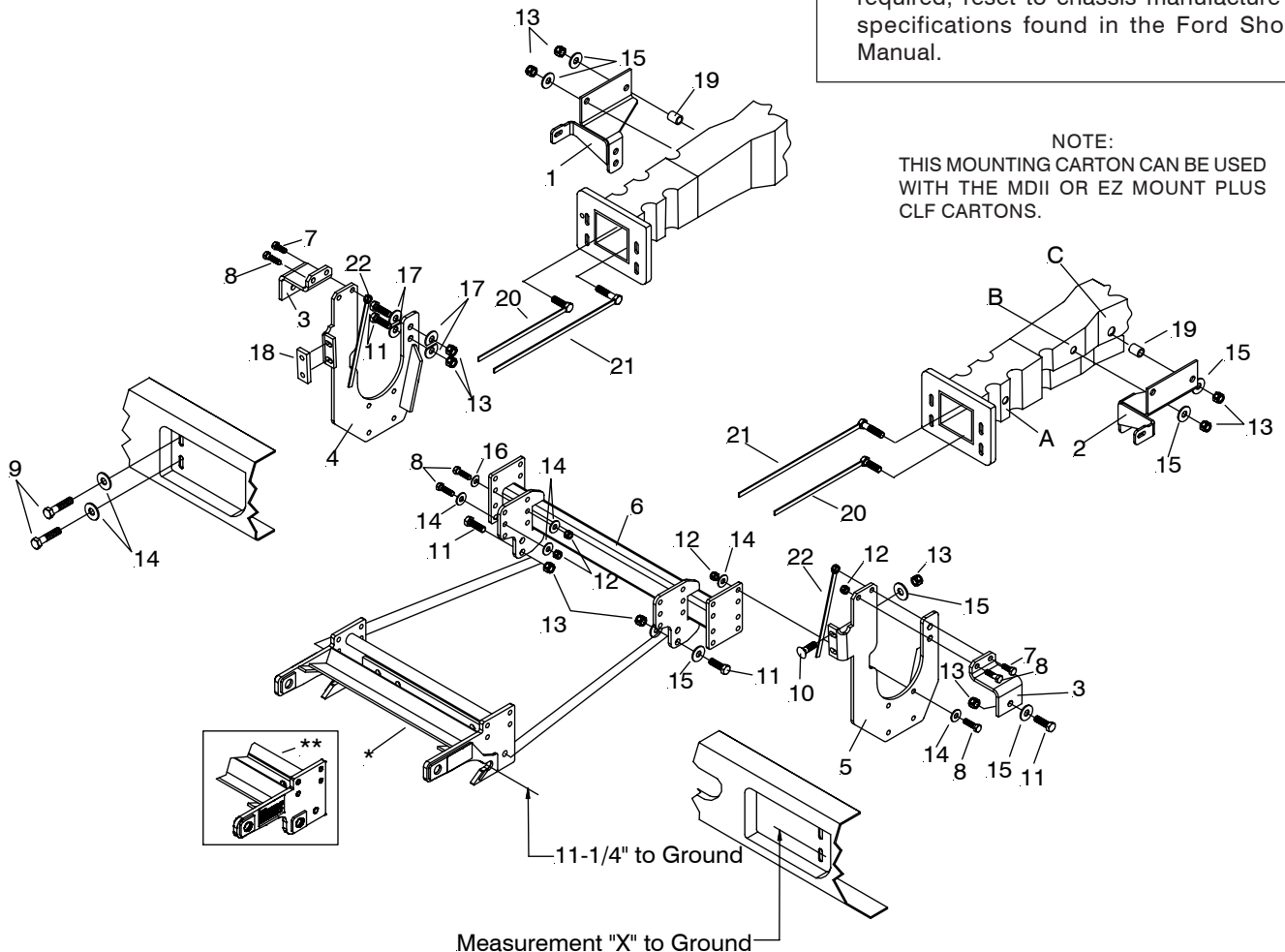
Diamond Equipment
6 Angell Lane • Damariscotta, ME 04543-4507
Phone 563-2227 (Area Code 207)
www.diamondplow.com • email info@diamondplow.com



PARTS LIST

ITEM	PART NO.	QTY.	DESCRIPTION
	17162	1	MOUNTING CARTON
1	19734	1	• R.H. Mount Assembly
2	19731	1	• L.H. Mount Assembly
3	19741	2	• Bracket
4	19727	1	• R.H. Side Mount Weldment
5	19729	1	• L.H. Side Mount Weldment
6	19720	1	• Rear Brace Weldment
	08875	1	• Hardware Bag
7	20094	2	• Bolt H 1/2-13 x 1-1/4" Gr. 5
8	20096	18	• Bolt H 1/2-13 x 1-3/4" Gr. 5
9	20098	4	• Bolt H 1/2-13 x 2-1/4" Gr. 5
10	21961	4	• Bolt C 1/2-13 x 2" Gr. 5
11	20141	8	• Bolt H 5/8-11 x 2" Gr. 5
12	20307	26	• Locknut ESNA 1/2-13
13	20309	12	• Locknut ESNA 5/8-11
14	20355	32	• Flatwasher 1/2"
15	20357	16	• Flatwasher 5/8"
16	22257	4	• Cut Flatwasher 1/2"
17	22134	8	• Cut Flatwasher 5/8"
	08876	1	• Hardware Bag
18	19354	2	• Spacer 1/2" x 1-1/2" x 4"
19	19726	2	• Spacer Sleeve
20	19759	2	• Handle Bolt 5/8-11 x 2" Gr. 5
21	19724	2	• Handle Bolt 5/8-11 x 2-3/4" Gr. 5
22	19758	2	• Handle Nut 1/2-13
*	19370	1	Universal Clevis (Part of Plus CLF Carton)
**	11770	1	Universal Clevis (Part of MDII CLF Carton)
	11" SAF	15" SAF	MEYER
	PART NO.	PART NO.	QTY.
	16515	16516	1
			DESCRIPTION
			Sector A-Frame Carton
			DIAMOND
	81504		1
			Common Attaching Kit
	81026		1
			Push Frame

Parts indented are included in the carton, bag or assembly under which they are indented.



IMPORTANT

After first use, retighten all mounting bolt connections to specified torque. All mounting bolt connections to be checked periodically for tightness.

Locknuts are furnished **DO NOT** tighten bolts and nuts until installation is complete (unless otherwise specified), then be sure to tighten all attaching parts per specified torque chart.

TORQUE CHART FOOT

Bolt Nut Size	Gr. 2	Gr. 5	Gr. 8
1/4 - 20	4 - 5		
5/16 - 18	9 - 11		
3/8 - 16	17 - 20	26 - 29	
7/16 - 14		42 - 46	60 - 66
1/2 - 13		64 - 72	90 - 100
5/8 - 11		127 - 141	179 - 198

VEHICLE RECOMMENDATIONS

⚠ WARNING

- A ballast weight may be required to prevent front GAWR overloading. If required, ballast must be securely attached at least 24 inches behind the rear axle.
- Front end wheel alignment and headlight aim may require readjustment after installation of equipment, and is the responsibility of the equipment installer. Failure to adjust front wheel alignment may cause premature uneven tire wear. If required, reset to chassis manufacturer's specifications found in the Ford Shop Manual.

NOTE:
THIS MOUNTING CARTON CAN BE USED WITH THE MDII OR EZ MOUNT PLUS CLF CARTONS.

VEHICLE RECOMMENDATIONS

Rear ballast is determined by weighing a vehicle's front and rear axles and adding weight behind the rear axle until front axle weight is under or equal to the vehicle specific front GAWR while not exceeding the rear GAWR and GVWR.

Vehicle option packages may vary. If in doubt, it is always a good idea to weigh the vehicle to ensure all weight ratings are not exceeded with plow in the raised position.

INSTALLATION INSTRUCTIONS

A. Looking at the front of the vehicle take a measurement from the ground to the center of one of the lower acorn nuts located on either side of the towhook. (This is shown as measurement "X" on the diagram). Record this measurement. See the measurement note between steps I and J.

B. Remove bumper, 1/8" bumper mounting plates and blocker beam from vehicle frame. Retain bumper mounting plates, blocker beam and hardware. They will not be reused.

Caution: Regular cab trucks equipped with diesel engines have a light harness attached to the inside of the bumper. Detach harness before removing the bumper.

C. Once bumper is removed from the vehicle, position brackets (3) over the top of the vehicle frame horns. Put the L.H. and R.H. Mount Assemblies (4 & 5) into place, attaching brackets (3) to Mounts (4 & 5) loosely at top front hole using 1/2-13 x 1-3/4" bolts (8) and 1/2-13 locknuts (12). Also attach at top rear hole (nearest the radiator) using 1/2-13 x 1-1/4" bolts (7) and handle nuts (22).

D. Attach LH & RH Mount Assemblies (4 & 5) angle brackets to vehicle frame horn flanges with Spacer (18) using 1/2-13 x 2" carriage bolts (10) and 1/2" flat washers (15) with 1/2 locknuts (13).

E. Attach the L.H. and R.H. Side Mount Weldments (1 & 2) to the rear of the mounting (in front of the stabilizer bar for 2005 and later models) using the 5/8-11 x 2" bolts (11) and locknuts (13). Snug the bolts as necessary to hold the Side Mount Weldments (1 & 2) up against the frame.

F. While holding Side Mounts (1 & 2) tight to the bottom and side of the vehicle frame scribe hole locations to be drilled at "B" and "C" per illustration. Remove Side Mounts.

G. At scribed hole "B" & "C" in vehicle frame, drill a 11/16" hole thru the outer side of the vehicle frame only.

Note: It may be necessary to bend the handles of the 18" long handle bolts (21) into an "S" to get around obstructions inside the frame. It also may be necessary to loosen the stabilizer bar anchor to install the 18" long handle bolt (21).

H. Reattach Side Mounts (1 & 2) to vehicle frame to hole "B" using Handle Bolt (20), 5/8 Flat washer (15) and 5/8 Locknut (13) and to hole "C" using Handle Bolt (21), 5/8 Flat washer (15) and 5/8 Locknut (13).

I. Attach Rear Brace Weldment (6) using 1/2-13 x 1-3/4" Bolt (8), 1/2" Locknuts (12) and 1/2" flat washers (14).

Note: Snug all bolts during installation. Do not tighten at this time.

Note: If measurement "X" in step (A) is less than 24" from the ground, attach Rear Brace Weldment (6) in higher holes of L.H. and R.H. Mount Assemblies (4 & 5). Also attach clevis frame (*) to the upper four holes of the center flanges of Rear Brace Weldment (6). If measurement "X" is 24" to 25-1/2", attach Rear Brace Weldment (6) in higher holes of L.H. and R.H. Mount Assemblies (4 & 5) and attach the clevis in the lower four holes of the clevis. If measurement "X" is greater than 25-1/2", attach L.H. and R.H. Mount Assemblies (4 & 5) in lower holes and attach the clevis in lower holes of the flanges.

J. Attach the Universal Clevis (*) to the Rear Brace Weldment (6) using 1/2-13 x 1-3/4" bolts (8) and Locknuts (12).

Note: Before tightening the fasteners, the Clevis Frame (*) should be level with the ground and pushed back as far under the vehicle as possible.

L. Tighten all fasteners to their proper torque. Tighten bolts in the same order they were assembled to the vehicle.

M. Fasten the Bracket (3) to the frame using them to locate a 11/16 hole in both outer sides of the frame located at "A". Drill through the outside of the frame only. Use the 5/8-11 x 2" bolts (11), locknuts (13), and flat washers (15) to secure the brackets.

N. Reinstall the bumper using 1/2-13 x 2-1/4" bolts(9), 1/2 Flat washers (14), and 1/2 locknuts (12).

O. Install remaining snowplow hardware per separate instructions.

Meyer Products or Diamond Equipment assumes no responsibility for installations not made in accordance with these instructions.