



## PARTS & INSTALLATION INSTRUCTIONS SNOW PLOW E-Z XPRESS® MOUNTING 17145 1999 & Later Ford Superduty F250/350/450/550 4x4 and F450/550 4x2 Models

End user must be given this instruction sheet prior to delievery of this Snow Plow.

### SAFETY DEFINITIONS

	This is the safety alert symbol. It is used to alert you to potential personal injury hazards. Obey all safety messages that follow this symbol to avoid possible injury or death.
	DANGER Indicates an imminently hazardous situation which, if not avoided, will result in death or serious injury.
	WARNING Indicates a potentially hazardous situation which, if not avoided, could result in death or serious injury.
	CAUTION Indicates an potentially hazardous situation which, if not avoided, may result in minor or moderate injury.
	CAUTION used without the safety alert symbol indicates a potentially hazardous situation which, if not avoided, will result in property damage.

### IMPORTANT NOTICE

In conjunction with FMVSS (Federal Motor Vehicle Safety Standards) and OEM (Original Equipment Manufacturer) guidelines, Meyer Products has designed this plow package with the following guidelines:

	Installation of a snowplow may effect your new vehicle warranty. For more information consult your Vehicle Owner's Manual / Vehicle Dealer.
--	---

	The vehicle must not be operated when overloaded. In all cases, the loaded vehicle weight, including the entire snowplow system, all aftermarket accessories, driver, passenger, options, nominal fluid levels, and cargo must not exceed the front/rear Gross Axle Weight Rating (GAWR), and total Gross Vehicle Weight Rating (GVWR). These weights ratings are specified on the safety compliance certification label on the driver's side door opening. The use of rear ballast weight may be required to prevent exceeding the front GAWR.
--	---

According to the NHTSA (National Highway Traffic Safety Administration) new and untitled vehicles need to be verified by the installer that snowplow and ballast (if needed) do no exceed the front/rear GAWR and total GVWR.

		Read the Meyer Owner's Manual before operating or servicing a snowplow. <b>FOLLOW THESE INSTRUCTIONS EXPLICITLY.</b>
--	--	--

### GENERAL INFORMATION

	<b>SAFETY PRECAUTIONS</b> should be used when <b>Hydraulic Unit is in OPERATION</b> and plow is in a <b>RAISED</b> position. <b>Lower plow to ground when vehicle is PARKED in case of hydraulic failure.</b>
--	---

Check contents against the parts list to determine all are correct and included, and also to familiarize yourself with them.

	Warranty does not apply to a Meyer or Diamond product which has been negligently or improperly assembled or installed.
--	--

**OVERHAUL** and **SERVICE INFORMATION** are covered on separate instructions.

**Parts indented are included in the carton, bag or assembly under which they are indented.**

Meyer Products and Diamond Equipment reserves the right, under its continuing product improvement program, to change construction or design details, specifications and prices without notice or without incurring any obligation.

Meyer Products Inc.  
18513 Euclid Ave. • Cleveland, Ohio 44112-1084  
Phone 486-1313 (Area Code 216)  
www.meyerproducts.com • email info@meyerproducts.com



Diamond Equipment  
6 Angell Lane • Damariscotta, ME 04543-4507  
Phone 563-2227 (Area Code 207)  
www.diamondplow.com • email info@diamondplow.com

## Parts List

ITEM	PART NO.	QTY	DESCRIPTION
	17145	1	<b>Xpress® Mounting Carton</b>
1	19389	1	• L.H. Side Member
2	19390	1	• R.H. Side Member
3	19346	2	• Bracket Assembly
4	19477	1	• L.H. Side Mount Weldment
5	19476	1	• R.H. Side Mount Weldment
6	11396	1	• Brace Connector
7	19497	1	• L.H. Hanger
8	19496	1	• R.H. Hanger
	08826	1	• <b>Hardware Bag</b>
9	11661	2	•• Sleeve
10	19354	2	•• Spacer
11	11968	2	•• Bumper Spacer
12	20098	8	•• Bolt H 1/2-13 x 2-1/4" Gr.5
13	20139	2	•• Bolt H 5/8-11 x 1-1/2" Gr.5
14	20141	10	•• Bolt H 5/8-11 x 2" Gr.5
15	20150	2	•• Bolt H 5/8-11 x 4-1/2" Gr.5
16	20153	2	•• Bolt H 5/8-11 x 5-1/2" Gr.5
17	20164	2	•• Bolt H 3/4-10 x 2" Gr. 5
18	20166	4	•• Bolt H 3/4-10 x 2-1/2" Gr. 5
19	14595	2	•• Special 3/4" J - Bolt
20	20355	16	•• Flatwasher 1/2"
21	20357	2	•• Flatwasher 5/8"
22	20359	2	•• Flatwasher 3/4"
23	20307	8	•• Locknut Esna 1/2-13
24	20309	14	•• Locknut Esna 5/8-11
25	20310	8	•• Locknut Esna 3/4-10
26	22283	2	•• Handle Nut 5/8-11
27	19170	1	<b>Brush Guard/Lift Frame</b>
28	07292	2	• Rubber Bumper
*	16535	1	<b>Pivot Bar/A-Frame Carton</b>

## General Information (Continued)

### CAUTION

**CAUTION: To avoid harm to vehicles electrical system always disconnect battery before beginning installation.**

**DO NOT BURN** holes or **WELD** vehicle frame. This may cause frame failure.

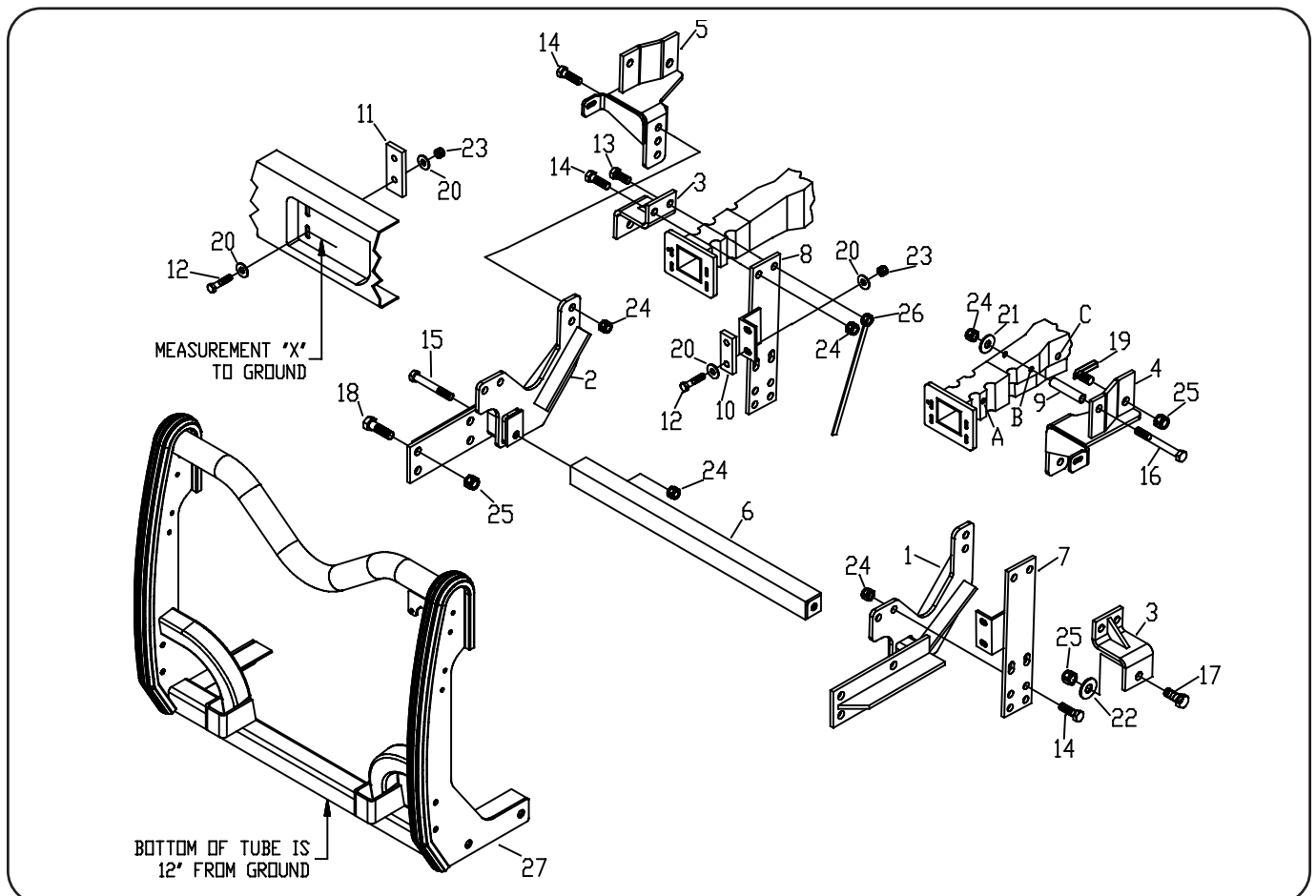
After first use, retighten all mounting bolt connections to specified torque. All mounting bolt connections to be checked periodically for tightness.

Locknuts are furnished **DO NOT** tighten bolts and nuts until installation is complete (unless otherwise specified), then be sure to tighten all attaching parts per specified torque chart.

### TORQUE CHART FOOT

Bolt Nut Size	Gr. 2	Gr. 5	Gr. 8
1/4 - 20	4 - 5		
5/16 - 18	9 - 11		
3/8 - 16	17 - 20	26 - 29	
7/16 - 14		42 - 46	60 - 66
1/2 - 13		64 - 72	90 - 100
5/8 - 11		127 - 141	179 - 198

Parts indented are included in the carton, bag or assembly under which they are indented.



## VEHICLE RECOMMENDATIONS

### **⚠WARNING**

Due to weight restrictions on vehicle's front GAWR, ballast weight may be required and must be applied 18" from the rear tailgate if needed.

### **⚠WARNING**

Rear ballast is determined by weighing a vehicle's front and rear axles and adding weight behind the rear axle until front axle weight is under or equal to the vehicle specific front GAWR while not exceeding the rear GAWR and GVWR.

Vehicle option packages may vary. If in doubt, it is always a good idea to weigh the vehicle to ensure all weight ratings are not exceeded with plow in the raised position.

## INSTALLATION INSTRUCTIONS

- A.** Looking at the front of the vehicle take a measurement from the ground to the center of one of the lower acorn nuts located on either side of the tow hook (This is shown as measurement "X" on the diagram). Retain for use later in installation.
- B.** Remove bumper and blocker beam from vehicle frame. **Note: Regular cab trucks equipped with diesel engines have a light harness attached to the inside of the bumper. Detach harness before removing the bumper. Retain blocker beam it will not be reused.**
- C.** Once bumper and blocker beam are removed from the vehicle, position bracket assemblies (3) over the top of the vehicle frame horns.
- D.** Before putting the L. H. & R.H. Hangers (7 & 8) into place, position spacers (10) behind the flanges of the vehicle frame horns. Attach bracket weldments (3) to Hangers (7 & 8) at rear hole (nearest the radiator of the vehicle) using a 5/8-11 x 1-1/2" bolt (13) and handle nut (26) on each side. Attach front hole using 5/8-11 x 2" bolt (14) and 5/8 locknut (24) on each side. Attach LH & RH Hangers' (7 & 8) angle brackets to vehicle frame horn flanges using two 1/2-13 x 2-1/4" bolts (12), 1/2" flatwashers (20), 1/2" locknuts (23), and one spacer (10) on each side.
- Note: Snug all bolts during installation, do not torque until final step.**
- E.** Attach L.H. & R.H. Side Mount Weldments (4 & 5) to rear tail of Side Members (1 & 2) using 5/8-11 x 2" bolts (14) and 5/8 locknuts (24).
- F.** While holding Side Mounts (4 & 5) tight to the bottom and side of the vehicle frame scribe hole locations to be drilled at "B" and "C" per illustration. Remove Side Mounts.
- G.** At scribed hole "B" in vehicle frame, drill a 11/16" hole thru both sides of the vehicle frame. Enlarge hole "B" to 7/8" drilling thru only the outside section of the vehicle frame to accommodate Sleeve (9).
- H.** At scribed hole "C" in vehicle frame drill a 1" diameter hole, drilling thru only the outside section of the vehicle frame.
- I.** Reattach Side Mounts (4 & 5) to vehicle frame at hole "B" using 5/8-11 x 5-1/2" Bolt (16), Sleeve (9), Flatwasher (21), and Locknut (24) and at hole "C" using Special J-Bolt 3/4" (19) and Locknut (25).
- J.** Using brackets (3) as a template drill a 13/16" hole "A" through the outside surface of frame rails only. Attach using a 3/4-10 x 2" bolt (17), flatwasher(22) and locknut (25), to secure the brackets.
- Note: Per illustration, Bumper Spacer (11) is to be added between the bumper and front flange of the vehicle frame when reinstalling the bumper.**
- Note: Snug all bolts during installation, do not tighten at this time.**
- Note: If measurement "X" in step (A) is less than 24" from the ground, attach L.H. and R. H. Sidemembers (1 & 2) to the upper two holes in Side Mount Weldments (4 & 5). Also attach the Lift Frame/Brush Guard(27) in the upper two holes on each side. If measurement "X" is 24" to 25-1/2", attach Sidemembers(1 & 2) in the upper two holes of the Side Mount Weldments(4 & 5) and the Lift Frame/ Brush Guard(27) in lower two holes. If measurement "X" is greater than 25-1/2", attach both the Sidemembers(1 & 2) and the Lift Frame/ Brush Guard(27) in the lower positions.**
- K.** Attach the Lift Frame/ Brush Guard(27) between the LH & RH Side Members (1&2) using 3/4-10 x 2-1/2 bolts (18), and Locknuts (25).
- Note: Before tightening the fasteners, the Lift Frame/ Brush Guard (\*) should be level with the ground and pushed back as far under the vehicle as possible.**
- L.** Tighten all fasteners to their proper torque. Tighten bolts in the same order they were assembled to the vehicle.
- N.** Reinstall tow hooks (if removed with blocker beam), then reinstall the bumper using 1/2-13 x 2-1/4" bolts(12), flatwashers (20), spacers (10), flatwashers(20) and locknuts (16). Reuse nut clips from blocker beam assembly to anchor the ends of the bumper to slots in Side Mount Weldments(4 & 5).
- O.** Install remaining snowplow hardware per separate instructions.

**Meyer Products or Diamond Equipment assumes no responsibility for installations not made in accordance with these instructions.**