

PARTS & INSTALLATION INSTRUCTIONS
MDII™ SNOW PLOW REPAIR KIT FOR 17122 MOUNTING
1999 & LATER 4X4 VEHICLES
FORD SUPERDUTY F-250 thru F-550

IMPORTANT NOTICE

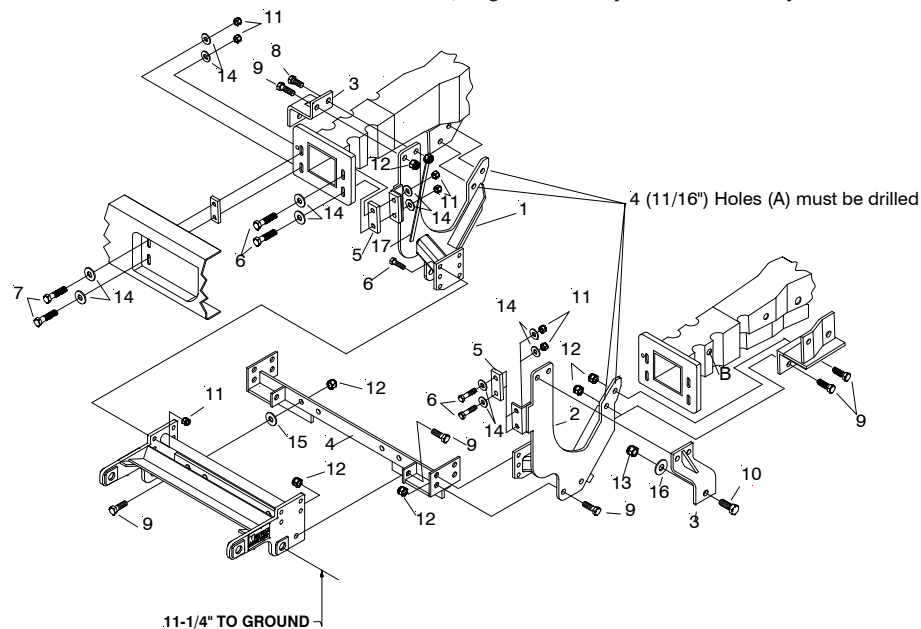
End user must be given this instruction sheet prior to delivery of this Snow Plow.

The equipment you have just purchased should only be used on vehicles equipped with the Manufacturer's Snow Plow Preparation Packages. Snow Plowing without the original Snow Plow Preparation Package may damage your vehicle and the added weight to the equipment may impair the operation and control of the vehicle. Snow Plowing with a vehicle that the manufacturer does not recommend for that purpose may void your new vehicle warranty. If your vehicle is not originally equipped with the Snow Plow Package, additional parts may be necessary before snow plowing. Owners of these vehicles should consult their dealers before purchase or installation of such parts. **CAUTION:** the installation, on any vehicle, of these parts is not a full substitute for the original equipment Snow Plow Preparation Package. **Warning:** Lift Arm extends beyond bumper of vehicle. To minimize damage from a front-end collision, Lift Arm should be removed from vehicle when Snow Plow is removed.

Parts List

Item	Part No.	Qty	Description
	08803	1	17122 Repair Kit
1	19348	1	• R.H. Mount Assembly
2	19349	1	• L.H. Mount Assembly
3	19346	2	• Bracket Assembly
4	19345	1	• Rear Brace Weldment
	08804	1	• Hardware Kit
5	19354	2	•• Spacer .50 x 1.50 x 4.00
6	20096	12	•• Bolt H 1/2-13 x 1-3/4" Gr.5
7	20098	4	•• Bolt H 1/2-13 x 2-1/4" Gr.5
8	20139	2	•• Bolt H 5/8-11 x 1-1/2" Gr.5
9	20141	16	•• Bolt H 5/8-11 x 2" Gr. 5
10	20164	2	•• Bolt H 3/4-10 x 2" Gr.5
11	20307	16	•• Locknut ESna 1/2-13
12	20309	16	•• Locknut ESNA 5/8-11
13	20310	2	•• Locknut ESNA 3/4-10
14	20355	16	•• Flatwasher 1/2"
15	20357	4	•• Flatwasher 5/8"
16	20359	2	•• Flatwasher 3/4"
17	22283	2	•• Handle Nut 5/8-11

Parts indented are included in the carton, bag or assembly under which they are indented.



Meyer Products reserves the right, under its continuing product improvement program, to change construction or design details, specifications and prices without notice or without incurring any obligation.



Meyer Products
 18513 Euclid Ave. • Cleveland, Ohio 44112-1084
 Phone (216) 486-1313
 www.meyerproducts.com • email info@meyerproducts.com

GENERAL INFORMATION

CAUTION: Always disconnect battery before beginning installation.

DO NOT BURN holes or **WELD** vehicle frame. This may cause frame failure.

After first use, retighten all mounting bolt connections to specified torque. All mounting bolt connections to be checked periodically for tightness.

Locknuts are furnished **DO NOT** tighten bolts and nuts until installation is complete (unless otherwise specified), then be sure to tighten all attaching parts per specified torque chart.

FOLLOW THESE INSTRUCTIONS EXPLICITLY.

Warranty does not apply to a Meyer or Diamond product which has been negligently or improperly assembled or installed.

SAFETY PRECAUTIONS should be used when **Hydraulic Unit is in OPERATION** and plow is in a **RAISED** position. **Lower plow to ground when vehicle is PARKED.**

NOTE: It is important that the Meyer/Diamond harness, all wires from the Meyer/Diamond light switch, and all other electrical wires be routed around hot or moving engine parts, and any sharp metal. Protection must be provided to guard against wire damage at these points. All excess or loose wires must be neatly secured using wire ties.

Check contents against the parts list to determine all are correct and included, and also to familiarize yourself with them.

OVERHAUL and **SERVICE INFORMATION** are covered on separate instructions.

VEHICLE RECOMMENDATIONS




1999 - 2000 - Snowplow Prep Package Option (86M)

Spring information located on the driver's-side door jam.

F250/F350	Spr. Code (V)	5200 lb. Frt. G.A.W.R.
F250/F350 HD	Spr. Code (X)	6000 lb. Frt. G.A.W.R.
F450/F550	Spr. Code (X)	6000 lb. Frt. G.A.W.R.

Set Tire Pressure to - 75 P.S.I

TORQUE CHART FOOT LBS.

Bolt Nut Size	Gr. 	Gr. 	Gr. 
1/4 - 20	4 - 5		
5/16 - 18	9 - 11		
3/8 - 16	17 - 20	26 - 29	
7/16 - 14		42 - 46	60 - 66
1/2 - 13		64 - 72	90 - 100
5/8 - 11		127 - 141	179 - 198
3/4 - 10		227 - 251	

INSTALLATION INSTRUCTIONS

Caution: Regular cab trucks equipped with diesel engines have a light harness attached to the inside of the bumper. Detach harness before removing the bumper.

- A. Once bumper is removed from the vehicle, remove the clevis and existing mounting **with the exception of the rear brackets** that attach to the frame.
- B. Attach the new RH & LH Mount Assemblies (1 & 2) to the front end flanges of the frame. Put the spacers (5) in place behind the flanges of the frame at the front of the vehicle before sliding the mount assemblies into place. Attach angle brackets of the mount assemblies to the flanges using the 1/2-13 x 1-3/4 bolts (6), 1/2 flatwashers (14) and 1/2 locknuts(11).
- C. Attach the new bracket assemblies (3) over the top of vehicle frame horns use 5/8-11 x 1-1/2" bolts (8) and handle nuts (17) nearest the radiator of the vehicle and 5/8-11 x 2" bolts (9) and locknuts (12) in the holes toward the front of the vehicle.
- D. Push the tail of the bolted assembly up against the rear brackets left on the truck frame and snug the bolts installed in steps "B" and "C". Mark the locations of the holes (A) of the L.H. & R.H. Side Mount Weldments at the holes in the rear brackets. Take LH & RH Mount Assemblies (1 & 2) back off the truck and drill the two 11/16" dia holes (A) on each tail of the weldment.
- E. Reinstall the L.H. & R.H. Assemblies as in steps "B" and "C" and also use 5/8-11 x 2" bolts (9) and locknuts (12) to attach to rear brackets on frame using holes (A) just drilled.
- F. Having fastened the bracket assemblies (3) to the LH & RH Mount Assemblies, Use the bracket assemblies bolted in place to locate a 13/16 hole in the each outer side of the frame rails. Drill the 13/16 hole (B) through the outside of the frame only. Use the 3/4-10 x 2" bolts (10), locknuts (13) and flatwashers (16) to secure the bracket assemblies to the frame.
- G. Reassemble the rest of the mounting loosely then tighten in the order that the bolts were assembled.

Meyer Products or Diamond Equipment assumes no responsibility for installations not made in accordance with these instructions.