



PARTS & INSTALLATION INSTRUCTIONS

MDII™ SNOW PLOW MOUNTING

1999 & LATER 4X4 VEHICLES

FORD SUPERDUTY F-250 thru F-550

IMPORTANT NOTICE

End user must be given this instruction sheet prior to delivery of this Snow Plow.

The equipment you have just purchased should only be used on vehicles equipped with the Manufacturer's Snow Plow Preparation Packages. Snow Plowing without the original Snow Plow Preparation Package may damage your vehicle and the added weight to the equipment may impair the operation and control of the vehicle. Snow Plowing with a vehicle that the manufacturer does not recommend for that purpose may void your new vehicle warranty. If your vehicle is not originally equipped with the Snow Plow Package, additional parts may be necessary before snow plowing. Owners of these vehicles should consult their dealers before purchase or installation of such parts.

CAUTION: the installation, on any vehicle, of these parts is not a full substitute for the original equipment Snow Plow Preparation Package.

Warning: Lift Arm extends beyond bumper of vehicle. To minimize damage from a front-end collision, Lift Arm should be removed from vehicle when Snow Plow is removed.

Parts List

Item	Part No.	Qty	Description
	17122	1	MDII Mounting Carton
1	19023	1	• L.H. Mount Assembly
2	19022	1	• R.H. Mount Assembly
3	11877	1	• L.H. Side Plate Weldment
4	11876	1	• R.H. Side Plate Weldment
5	11652	1	• R.H. Side Mount Weldment
6	11773	1	• L.H. Side Mount Weldment
7	11797	1	• Rear Brace Weldment
	08736	1	• Hardware Bag
8	11661	2	•• Sleeve
9	11968	2	•• Spacer
10	11944	1	•• Angle Mount
11	14595	2	•• Special Bolt 3/4"
12	20027	1	•• Bolt H 5/16-18 x 1" Gr.2
13	20098	4	•• Bolt H 1/2-13 x 2-1/4" Gr. 5
14	20096	12	•• Bolt H 1/2-13 x 1-3/4" Gr. 5
15	20141	14	•• Bolt H 5/8-11 x 2" Gr. 5
16	20153	2	•• Bolt H 5/8-11 x 5-1/2" Gr. 5
17	20304	1	•• Locknut ESNA 5/16-18
18	20307	16	•• Locknut ESNA 1/2-13
19	20309	16	•• Locknut ESNA 5/8-11
20	20310	2	•• Locknut ESNA 3/4-10
21	20352	2	•• Flatwasher 5/16
22	20355	16	•• Flatwasher 1/2"
23	20357	6	•• Flatwasher 5/8"
24	20359	2	•• Flatwasher 3/4"
*	11770	1	Universal Clevis (Packed in CLF carton)
	11" Sector	15" Sector	MEYER
	Part No.	Part No.	Description
	16515	16516	1 Sector A-Frame Carton
	21534	21534	2 • Lift Chain 5/16 x 36"
	12326	12793	1 • Sector
	13711	13715	1 • A-Frame (11" x 34" x 22-1/4")
	07017	-----	3 • Trip Spring
	-----	07017	4 • Trip Spring
	09916	09916	1 • Plow Marker kit
	08738	08739	1 • Hardware Bag
			DIAMOND
		81504	1 Common Attaching Kit
		817000104	2 • Cylinder Collar
		8511002008059	1 • Chain 5/16" PR Coil Lift 59"
		811000095	2 • Plow Marker
		80389	1 • Hardware Bag
		81026	1 Push Frame

Parts indented are included in the carton, bag or assembly under which they are indented.

Meyer Products and Diamond Equipment reserves the right, under its continuing product improvement program, to change construction or design details, specifications and prices without notice or without incurring any obligation.

Meyer Products
18513 Euclid Ave. • Cleveland, Ohio 44112-1084
Phone 486-1313 (Area Code 216)
www.meyerproducts.com • email info@meyerproducts.com



Diamond Equipment
6 Angell Lane • Damariscotta, ME 04543-9720
Phone 563-2227 (Area Code 207)
www.diamondplow.com • email info@diamondplow.com

General Information

CAUTION: Always disconnect battery before beginning installation.

DO NOT BURN holes or **WELD** vehicle frame. This may cause frame failure.

After first use, retighten all mounting bolt connections to specified torque. All mounting bolt connections to be checked periodically for tightness.

Locknuts are furnished **DO NOT** tighten bolts and nuts until installation is complete (unless otherwise specified), then be sure to tighten all attaching parts per specified torque chart.

FOLLOW THESE INSTRUCTIONS EXPLICITLY. Warranty does not apply to a Meyer or Diamond product which has been negligently or improperly assembled or installed.

SAFETY PRECAUTIONS should be used when **Hydraulic Unit is in OPERATION** and plow is in a **RAISED** position. **Lower plow to ground when vehicle is PARKED.**

NOTE: It is important that the Meyer/Diamond harness, all wires from the Meyer/Diamond light switch, and all other electrical wires be routed around hot or moving engine parts, and any sharp metal. Protection must be provided to guard against wire damage at these points. All excess or loose wires must be neatly secured using wire ties.

Check contents against the parts list to determine all are correct and included, and also to familiarize yourself with them.

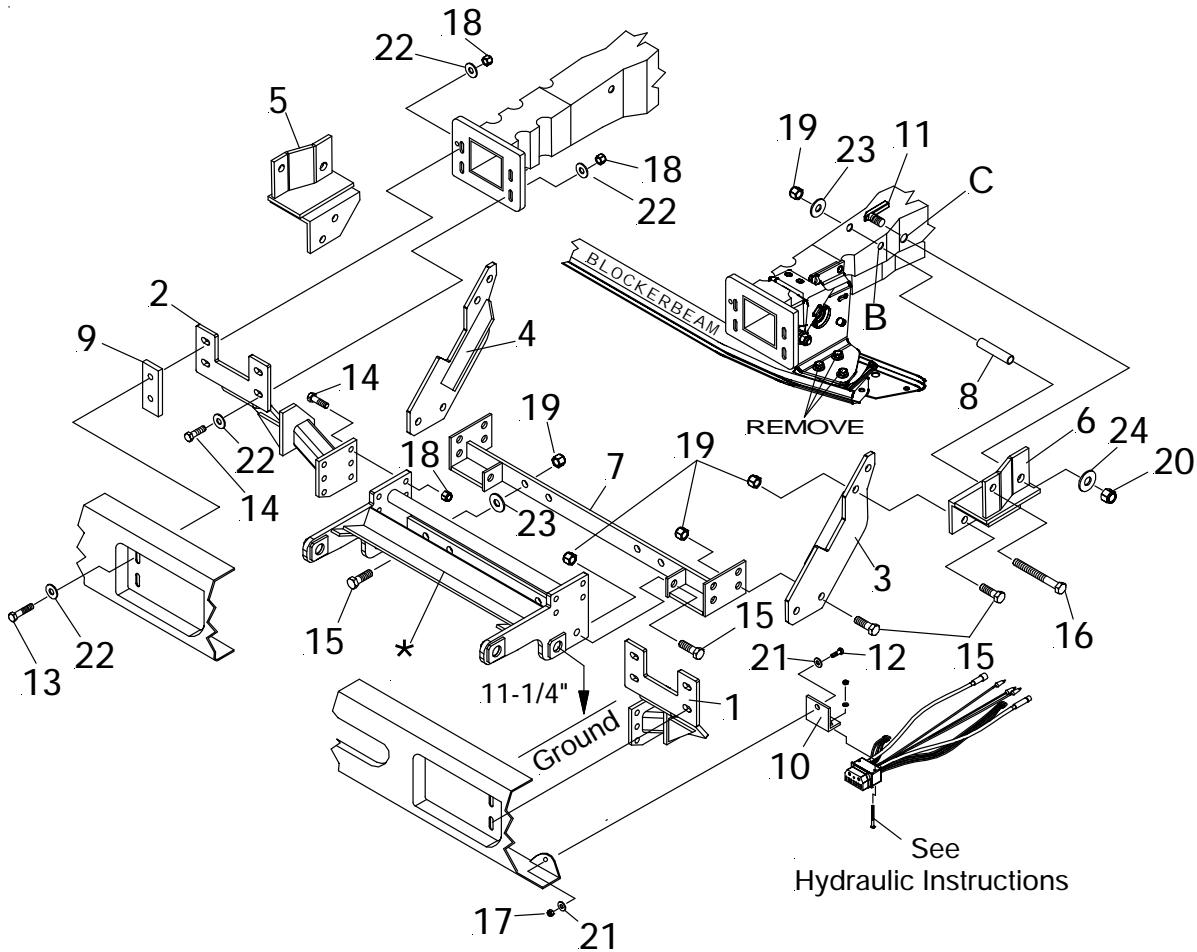
OVERHAUL and **SERVICE INFORMATION** are covered on separate instructions.

VEHICLE RECOMMENDATIONS

1999 - 2000 - Snowplow Prep Package Option (86M)
Spring information located on the driver's-side door jam.

F250/F350	Spr. Code (V)	5200 lb. Frt. G.A.W.R.
F250/F350 HD	Spr. Code (X)	6000 lb. Frt. G.A.W.R.
F450/F550	Spr. Code (X)	6000 lb. Frt. G.A.W.R.

Set Tire Pressure to - 75 P.S.I






INSTALLATION INSTRUCTIONS

- A. Looking at the front of the vehicle take a measurement from the ground to the center of one of the lower acorn nuts located on either side of the tow hook (This is shown as measurement "X" on the diagram). Retain for use later in installation.
- B. Carefully remove vehicle Air Dam from vehicle bumper. Air Dam will be reinstalled later.
- C. Remove bumper and 1/8" bumper mounting plates from vehicle frame. Retain bumper mounting plates and hardware. They will not be reused. **Caution: Regular cab trucks equipped with diesel engines have a light harness attached to the inside of the bumper. Detach harness before removing the bumper.**
- D. Once bumper is removed from the vehicle, attach the L.H. & R.H. Mount Assemblies (1&2) to the inside slots on front of vehicle frame horns using 1/2-13 x 1-3/4" bolts (14), flatwasher (22) and locknuts (18).
- E. Reinstall the bumper using 1/2-13 x 2-1/4" bolts (13), flatwashers (22), Spacers (9) and locknuts (18). **Note: Spacer (9) is to be added between the bumper and clevis frame (1) as per illustration. Note: Snug all bolts during installation, do not tighten at this time.**
- Note: If measurement "X" in step (A) is approximately 24" from the ground, attach clevis frame (*) to the upper four holes mount assemblies (1&2). If measurement "X" is closer to 25-1/2", attach in lower four holes.**
- F. Attach the Universal Clevis (*) between the LH & RH Mount Assemblies (1&2) using 1/2-13 x 1-3/4" bolts (14), and Locknuts (18).
- G. Attach Rear Brace Weldment (7) to the rear of the Universal Clevis (*) using six 5/8-11 x 2" Bolts (15) and Locknuts (19). **Note: Flatwashers (23) should be sandwiched the between the Universal Clevis (*) and the Rear Brace Weldment (7) on the four rear holes**
- H. Attach LH & RH Side Plate Weldments (3&4) to the holes determined in Rear Brace Weldment (7) using 5/8-11 x 2" Bolts (15), and Locknuts (19). **Note: Snug bolts, do not tighten at this time.**
- I. Loosely attach Side Mounts (5&6) to the Side Plate Weldments using 5/8-11 x 2" Bolts (15), and Locknuts (19).
- J. While holding Side Mounts (5&6) tight to the bottom and side of the vehicle frame scribe hole locations to be drilled at "B" and "C" per illustration. Remove Side Mounts.
- K. At scribed hole "B" in vehicle frame, drill a 11/16" hole thru both sides of the vehicle frame. Enlarge hole "B" to 7/8" drilling thru only the outside section of the vehicle frame to accommodate Sleeve (8).
- L. At scribed hole "C" in vehicle frame drill a 1" diameter hole, drilling thru only the outside section of the vehicle frame.
- M. Reattach Side Mounts (4&5) to vehicle frame at hole "B" using 5/8-11 x 5-1/2" Bolt (16), Sleeve (8), Flatwasher (23), and Locknut (19) and at hole "C" using Special Bolt 3/4 (11), Flatwasher (24), and Locknut (20). Reattach Side plate weldments (3&4) to Side mounts (2&3) using 5/8-11 x 2" bolts (15), and locknuts (19).
- Note: Before tightening the fasteners, the Clevis Frame (*) should be level with the ground and pushed back as far under the vehicle as possible.**
- N. On driver side attach Connector Bracket (10) to bumper using two 5/16 x 1" bolts (12), Flatwashers (21) and Locknut (17) as shown per illustration.
- O. Tighten all fasteners to their proper torque. Tighten bolts in the same order they were assembled to the vehicle.
- P. Install remaining snowplow hardware per separate instructions.

Note: If measurement "X" in step (A) was approximately 24" from the ground attach the LH & RH Side Plate Weldments (3&4) to the lower two holes in Rear Brace Weldment (7). If measurement "X" was determined closer to 25-1/2", attach in upper two holes.

TORQUE CHART FOOT LBS.

Bolt Nut Size	Gr. 2 	Gr. 5 	Gr. 8 
1/4 - 20	4 - 5		
5/16 - 18	9 - 11		
3/8 - 16	17 - 20	26 - 29	
7/16 - 14		42 - 46	60 - 66
1/2 - 13		64 - 72	90 - 100
5/8 - 11		127 - 141	179 - 198
3/4 - 10		227 - 251	