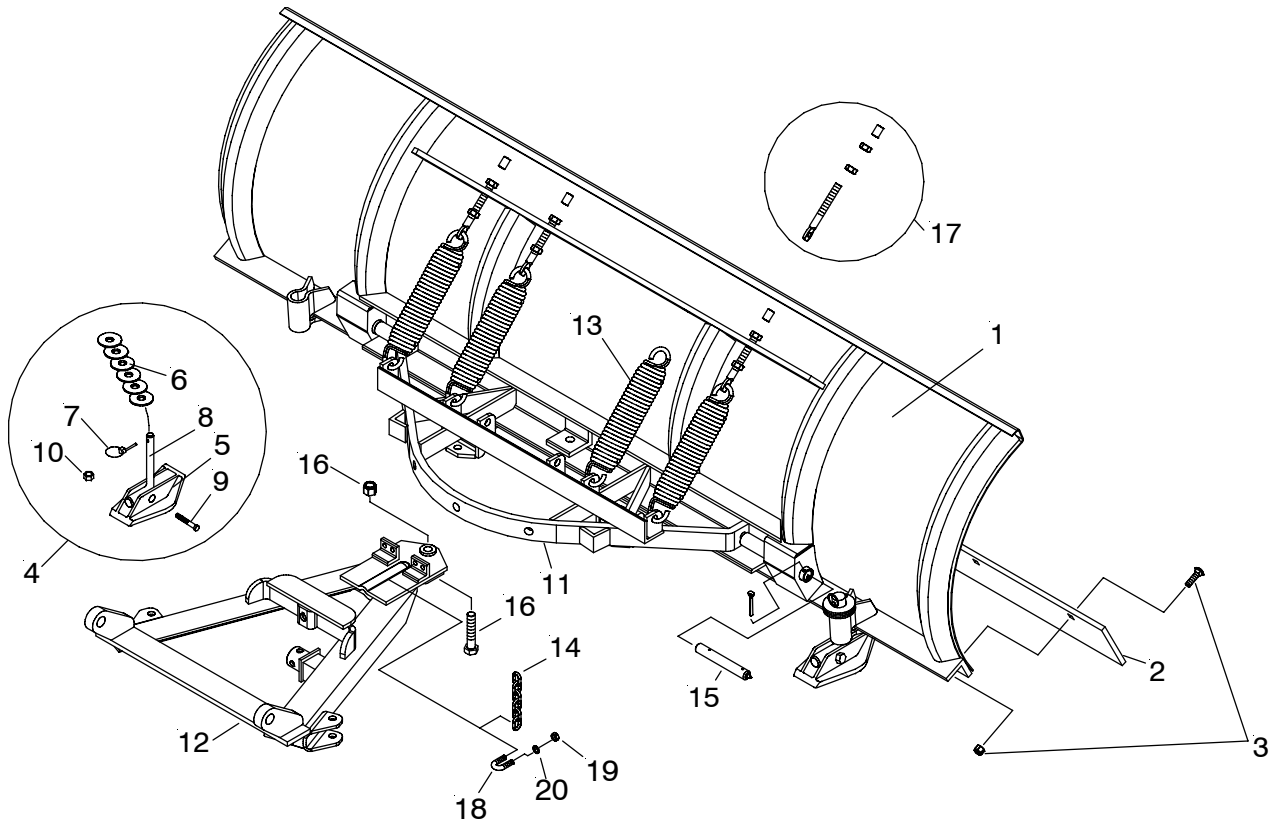


Parts & Installation Instructions

MDII™ Model C-7.5, C-8, C-8.5 & C-9 Moldboards



Parts List

Item	C - 7.5	C - 8.0	C - 8.5	C - 9.0	CC - 9.0	Qty	Description
1	09240	09286	09983	09250	09298	1	Moldboard Assembly
2	09796	09133	09134	07259	07259	1	• Cutting Edge
3	08692	08692	08692	-----	-----	1	• Bolt C 1/2-13 x 2 & Locknut (Kit of 10 each)
3	-----	-----	-----	08318	09318	1	• Bolt C 5/8-11 x 2-1/4 & Locknut (Kit of 12 each)
4	09126	09126	09126	09126	09126	2	• Runner & Spindle Assembly
5	07006	07006	07006	07006	07006	1	•• Runner
6	20363	20363	20363	20363	20306	10	•• Flatwasher 1-1/4
7	22083	22083	22083	22083	22083	1	•• Linch Pin
8	12057	12057	12057	12057	12057	1	•• Spindle
9	20101	20101	20101	20101	20101	1	•• Bolt H 1/2-13 x 3"
10	20353	20353	20353	20353	20353	1	•• Locknut 1/2-13
	16516	16516	16516	16516	16516		Sector & A-Frame Carton
11	12793	12793	12793	12793	12793	1	• Sector
12	13715	13715	13715	13715	13715	1	• A-Frame (15" x 31" x 22-1/8")
13	07017	07017	07017	07017	07017	4	• Trip Spring
14	21534	21534	21534	21534	21534	2	• Lift Chain 5/16 x 36"
	09916	09916	09916	09916	09916	1	• Marker Kit
	08739	08739	08739	08739	08739	1	• Hardware Bag
15	09119	09119	09119	09119	09119	2	•• Pivot Pin w/ Fittg. & Cotter Pin
16	09125	09125	09125	09125	09125	1	•• King Bolt w/ Locknut
17	09124	09124	09124	09124	09124	4	•• Eye Bolt w/ Locknut & Cap
18			8518001026			2	•• 7/16-14 NC U-Bolt
19			8501001007			4	•• 7/16-14 NC Nut
20	20328	20328	20328	20328	20328	4	•• 7/16 Lockwasher

Parts indented are included in the assembly under which they are indented.

INSTALLATION INSTRUCTIONS

Note: The following instructions cover assembly of Moldboard, Sector and A-Frame. Refer to separate instructions for installation of plow mounting and hydraulic system.

- A. Liberally coat Pivot Pins (15) with chassis lubricant.
- B. Attach Sector (11) to Moldboard (1) with Pivot Pins (15) (grease fitting facing outward) and insert Hair Pin Cotter. Grease Pivot Pin using grease fitting.
- C. Attach Eye Bolts (17) to Moldboard (1) and trip Springs (13) to Sector (11), making certain locknuts are positioned as shown in Figure 1.
- D. Make certain each Eye Bolt (17) is in a vertical position as shown in figure 1 so that the Eye Bolt (17) and Trip Spring (13) hinge properly when moldboard trips.

Note: Proper tension is attained when Trip Spring (13) coils just begin to separate and then tightening top locknut four additional turns. Tighten bottom Locknut (20530) to secure Eyebolt in position. Install Eyebolt caps (07031) over exposed threads. See Figure 1.

- E. Attach A-Frame to Sector (11) as shown in Figure 2.
IMPORTANT: Install King Bolt (16) from bottom so that locknut (16) is on top.

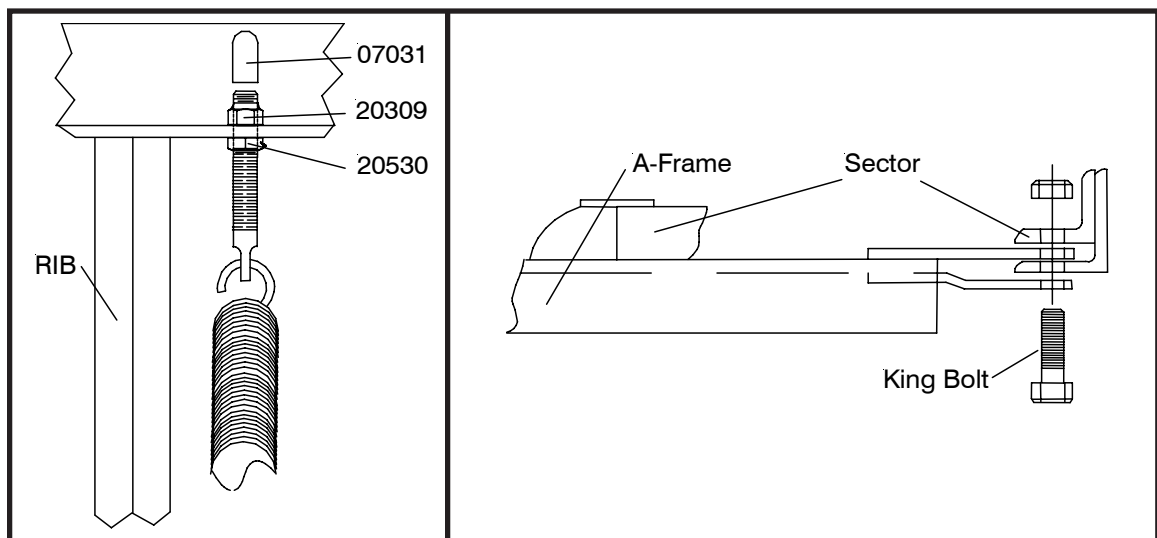


Figure 1

Figure 2