



PARTS & INSTALLATION INSTRUCTIONS

E-60 & E-60H

MEYER QUIK LIFT®

PARTS LIST

Item	E - 60		E - 60H	Qty.	Description
	1 1/2" x 10" RAM	1 1/2" x 12" RAM	2" x 12" RAM		
1	15714	15717	15719	1	Lift and P.A. Ass'y. (Complete) 12 volt
2	15753	15753	15754	1	• Lift Ass'y. (Unit only) 12 volt
3	15764	15764	15764	1	• Harness and Fuse Ass'y.
4	15370	15370	15370	1	• Starter Solenoid - 12 volt
5a	07019	07021	07023	1	• Ram L.H. with Hose & Fittings
6a	07968	05437	05752	1	•• Ram
7a	22144	22144	22144	1	•• Hose Ass'y. 1/4 x 45" Lg.
8a	22141	22141	22141	1	•• 1/4 x 90 Degree Elbow
9	22291	22291	22291	1	•• Coupler 1/4 - Male Half
5b	22325	22325	22325	1	• Coupler Cap Low Spill
6b	07020	07022	07024	1	• Ram R.H. with Hose & Fittings
7b	07968	05437	05752	1	•• Ram
8b	22144	22144	22144	1	•• Hose Ass'y. 1/4 x 45" Lg.
9	22141	22141	22141	1	•• 1/4 x 90 Degree Elbow
10	22292	22292	22292	1	•• Coupler 1/4 - Female Half
11	22326	22326	22326	1	• Coupler Plug Low Spill
12	15811	15811	15811	1	• Pigtail Ass'y. (Two Terminal Motor)
13	15671	15671	15671	1	• Power Cable - 63" - RED
14	15672	15672	15672	1	• Ground Cable - 42" - BLACK
15	05024	05024	05024	1	• Power Cable (Black) - 36"
16	15669	15669	15669	1	• Weather Plug - Solenoid Wires
17	36248	36248	36248	1	• Weather Plug - Power Cables
18	08473	08473	08473	1	• Relief Valve Kit - Reservoir
19	15765	15765	15765	1	• Hardware Bag
20	07273	07273	07273	1	•• Tap Connector
21	15102	15102	15102	1	•• Bolt 5/16 - 18 x 1 1/2" Gr. 2
22	15427	15427	15427	1	•• Light Switch Bracket
23	15673	15673	15673	1	•• Membrane Switch Bracket
24	15675	15675	15675	1	•• Clamp Plate
25	15676	15676	15676	1	•• Backup Plate
26	20312	20312	20312	2	•• Locknut 1/4 - 20
27	20841	20841	20841	2	•• S. Tapping Screw #12 - 14 x 1/2" PanHD.
28	20863	20863	20863	2	•• Machine Screw 1/4 - 20 x 1" RND. HD.
29	21398	21398	21398	2	•• S. Tapping Screw 1/4 - 14 x 3/4"
30	21400	21400	21400	1	•• Washer INT/Ext Tooth 5/16
31	21832	21832	21832	1	•• Bushing - Split
32	21953	21953	21953	1	•• Decal - Danger (Mount on Dashboard)
33	22091	22091	22091	1	•• Decal - Lights
34	22154	22154	22154	1	• Membrane Switch
35a	08642	08642	08642	1	Kit Bracket (Floor Mount) *Optional
35b	15677	15677	15677	1	•• Bracket Floor
36	21398	21398	21398	4	•• Hex Head Self Tapping Screw 1/4 - 14 x 3/4"
37	20325	20325	20325	4	•• Lockwasher 1/4"
38a	08363	08364	08364	1	• Hardware Bag (P.A. Rams)
38b	20146	-----	-----	4	•• Bolt H 5/8 - 11 x 3 1/4" Gr. 5
39	-----	20147	20147	4	•• Bolt H 5/8 - 11 x 3 1/2" Gr. 5
40	20309	20309	20309	4	•• Locknut 5/8 - 11
41	-----	20357	20357	2	•• Flatwasher 5/8

Parts indented are included in the carton, bag or assembly under which they are indented.

GENERAL INFORMATION:

CAUTION: Always disconnect battery prior to installation.

Check contents against the parts list to determine all are correct and included. When ordering parts, furnish Part No., Name and Description, Type of Hydraulic Unit and Moldboard Size.

SAFETY PRECAUTIONS should be used when **Quik Lift®** is in OPERATION and plow is in a RAISED position. LOWER plow to ground when vehicle is PARKED.

OVERHAUL and SERVICE INFORMATION is covered on separate instructions.

For **Quik Lift®** Unit maintenance, refer to "Owner's Manual."

Meyer Products LLC reserves the right, under its continuing product improvement program, to change construction or design details, specifications and prices without notice or without incurring any obligation.

NOTES:

1. Connect ground cable to negative side of battery for a solid connection to ground.
2. Caution: Route all cables away from moving engine parts, Manifolds, and sharp sheet metal.
3. For weather protection, tape all electrical connections at front of vehicle.
4. The vehicle must be equipped with a "Heavy Duty Battery" (70 Amp. Hr. Min.) 550 C.C.A. and "Alternator" (60 amp. Min.) to obtain maximum performance.
5. Follow these instructions explicitly. Warranty does not apply to a Meyer product which has been negligently or improperly assembled or installed.



INSTALLATION INSTRUCTIONS

- A. Install E-60 Lift Assembly (1) to Lift Frame (using bolts supplied in the mounting carton), with the Electric Motor toward the left hand side (Driver's side); attach the lift ram in the inner hole of the Lift Arm (unless otherwise instructed in vehicle mounting instructions) as per illustration. On HM-9 and HM-10 Snow Plows only, install the E-60H Lift Assembly with the Electric Motor toward the right hand side (Passenger side); attach the lift ram in the outer hole of the Lift Arm.

Note: If an E-60 Unit is to be used on the older style Full Size or TM mountings, the unit may require being rotated 180 degrees with the Electric Motor to the right hand side (Passenger side) of the vehicle.

- B. Remove shipping plug from filler hole and install Relief Valve Kit (16). Tighten to 100-125 in. lbs.
- C. Install Coupler Cap and Plug (8a,b) onto Power Angling Block per illustration.

- D. Install Pigtail (10) to Lift Unit (1) with the red leg to the (+) motor stud and black leg to the (-) motor stud as per figure 2A. Attach the other black leg of Pigtail (10) to the base of the Lift Unit (1) as per figure 2 using bolt (18) and lockwasher (27). Place lockwasher (27) between cable terminal and base so it bites into paint for proper ground.

- E. When Lift (1) is removed, protect the sockets from corrosion by using Weather Plugs (14 & 15).

WARNING:

Lift arm extends beyond bumper of vehicle. To minimize damage from a front-end collision, lift arm should be removed from vehicle when snow plow is not in use.

- F. Choose a convenient location for the control switch. If the desired location is the dashboard, install Bracket (20) by drilling 2 holes in the dashboard and secure using Round Head Machine Screws (25) and Locknuts (23). Install Back-up Plate (22) behind dash for added stiffness. See Figure 3. Also apply Danger Decal (29) to dashboard.

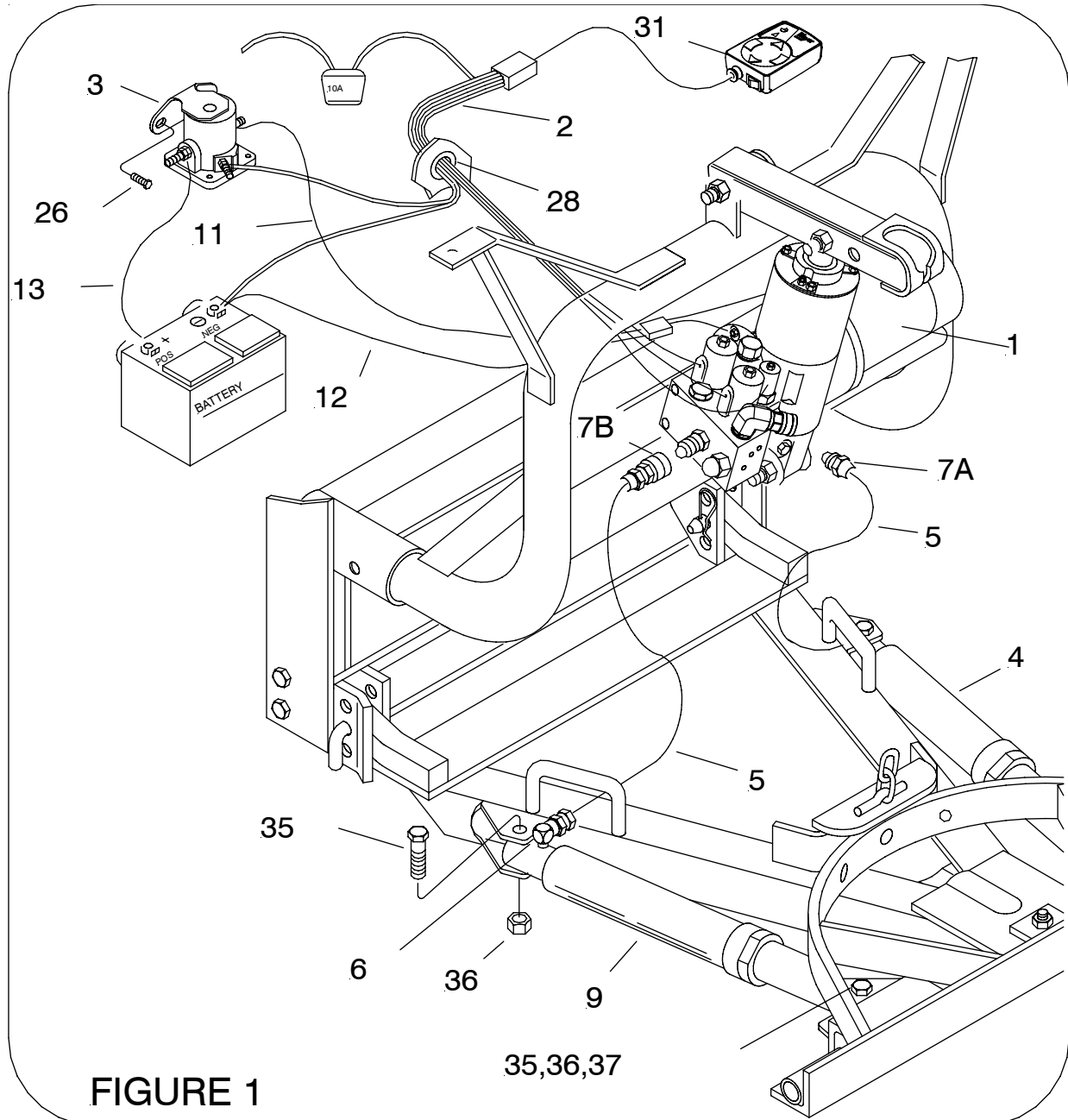


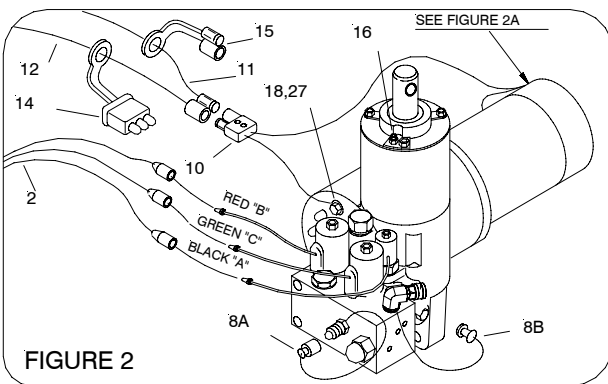
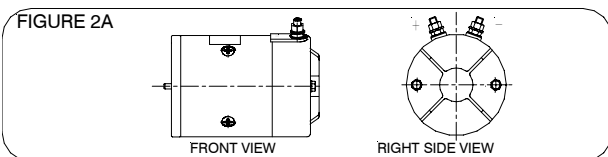
FIGURE 1

35,36,37

- G. To mount control to shift lever, use Bracket (20), Clamp Plate (21), Round Head Machine Screws (25) and locknuts (23). See Figure 3.
- H. The light switch (found in the light carton) can also be located wherever desired by using the Light Bracket (19) and Self-Tapping screws (24). If Light Switch Bracket is used apply Light Decal (30).
- I. Use Bushing (28) where Harness (2) is routed through firewall and radiator support panel. Requires 7/8" diameter hole. Be certain to route all wiring around hot or moving engine parts, and any sharp sheet metal. Protection must be provided to guard against wire damage at these points. All excess or loose wire must be neatly secured using wire ties. Fused lead from Wiring Harness (2) must be attached to terminal in fuse panel that is activated only when the ignition key is "on." The three colored wires in Harness (2) must be routed through grill to E-60 unit.

- J. Install Starter Solenoid (3) to metal surface in engine compartment using Screws (26). (Solenoid must be grounded to operate). Slide Weather Plugs (14 & 15) over Power Cable (11) and Ground Cable (12). Attach Red Power Cable (11) to a large terminal on Starter Solenoid (3) and route plug-end to front of grill area of truck. Attach Black Ground Cable (12) to negative (-) terminal of battery and route plug-end to front grill area. Attach 36" (Black) Power Cable (13) to positive (+) terminal of battery and remaining large terminal on Starter Solenoid (3). Attach small white wire from harness (2) to small terminal on Starter Solenoid (3).
- K. Attach orange wire with large eyelet (Membrane switch ground wire) from Harness (2) to negative (-) terminal of battery.

Warning: Membrane switch must have a good ground to operate properly. A poor ground will cause switch to malfunction and cause internal damage to switch. This will not be covered under warranty.



POWER ANGLING CYLINDERS:

Attach Power Angling Cylinders (4 & 9) to Sector and A-Frame using bolts (35) and locknuts (36). When using 1-1/2" x 12" rams also install washer (37) at Piston end of Rams (4 & 9).

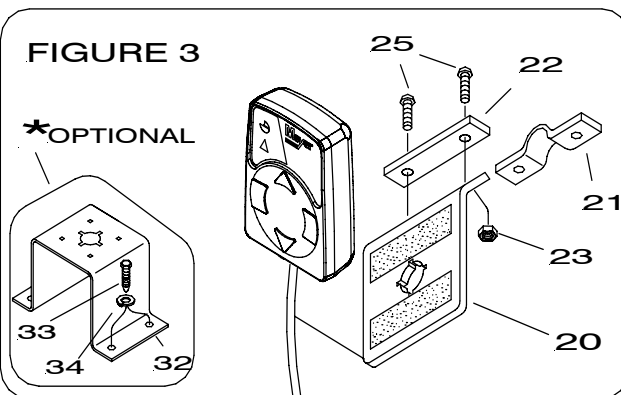
Make certain Ram (4) with hose (5) and Male-half of coupler (7) is on Driver's side and Ram (9) with Hose (5) and Female-half of coupler (7) is on the Passenger-side.

Note: When the Moldboard Assembly is removed from the vehicle, to prevent contamination to the Couplers and Hydraulic system, the L.H. and R.H. Power Angling Hoses must be re-attached by plugging the coupler (7a, 7b) together. Also where the power angling hoses were uncoupled at the hydraulic unit, attach Coupler Cap (8a) and Plug (8b) to the female and male halves of coupler.

Power Angling Cylinders furnished with the Quik Lift® have been factory filled with the proper amount of fluid. If for any reason it is necessary to add fluid to Reservoir or to bleed the Power Angling Cylinders, proceed as follows:

- a. Remove Relief Valve (16) from Reservoir to add fluid during charging and bleeding.
- b. Temporarily loosen both hose connections at the R.H., L.H. Power Angling Cylinders. Base end of Cylinder must be higher than Rod end to enable trapped air to escape.
- c. Angle the Plow in both directions until fluid leaks out at both points in a steady flow.
- d. Retighten the hose connections.

NOTE:
Proper fluid level is 1-1/2" below filler hole. It must be checked with the lift arm fully retracted (down).



ADDITIONAL BATTERY CONNECTIONS:

- a. When attaching cables to battery with side post terminals, use M.P. Adaptor Part #21976 and attach as shown in Figure 1.
- b. Figure 2 illustrates the method of using a repair type terminal connector which is original equipment on some vehicles.

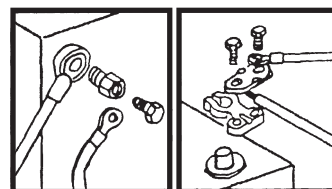


Fig. 1 Fig. 2