

## PARTS & INSTALLATION INSTRUCTIONS

### MEYER SNOW PLOW MOUNTING for 1991 & Later GMC and Chevrolet HD 3500 SERIES 4x2 Models

#### IMPORTANT NOTICE

**End user must be given this instruction sheet prior to delivery of this Snow Plow.**

The equipment you have just purchased should only be used on vehicles equipped with the Manufacturer's Snow Plow Preparation Packages. Snow Plowing without the original Snow Plow Preparation Package may damage your vehicle and the added weight to the equipment may impair the operation and control of the vehicle. Snow Plowing with a vehicle that the manufacturer does not recommend for that purpose may void your new vehicle warranty. If your vehicle is not originally equipped with the Snow Plow Package, additional parts may be necessary before snow plowing. Owners of these vehicles should consult their dealers before purchase or installation of such parts. CAUTION: the installation, on any vehicle, of these parts is not a full substitute for the original equipment Snow Plow Preparation Package.

**Warning:** Lift Arm extends beyond bumper of vehicle. To minimize damage from a front-end collision, Lift Arm should be removed from vehicle when Snow Plow is removed.

#### PARTS LIST

Item	Part No.	Qty.	Description
	17093	1	<b>MOUNTING CARTON</b>
1	11335	1	• Clevis Frame
2	11732	1	• R.H. Side Member
3	11731	1	• L.H. Side Member
4	11381	1	• L.H. Mtg. Bracket
5	11382	1	• R.H. Mtg. Bracket
6	11756	1	• R.H. Handle Nut
7	11757	1	• L.H. Handle Nut
8	10514	1	• Lift Arm
9	11544	2	• Receiver Tube Cap
	08609	1	• <b>HARDWARE BAG</b>
10	11006	2	•• Hinge Pin
11	11385	2	•• Turbe Spacer
12	14595	2	•• Special Bolt 3/4"
13	20072	4	•• Bolt H 7/16-14 x 1-1/4" Gr.5
14	20139	2	•• Bolt H 5/8-11 x 1-1/2" Gr. 5
15	20142	4	•• Bolt H 5/8-11 x 2-1/4" Gr. 5
16	20144	1	•• Bolt H 5/8-11 x 2-3/4" Gr.5
17	20146	2	•• Bolt H 5/8-11 x 3-1/4" Gr.5
18	20149	2	•• Bolt H 5/8-11 x 4" Gr.5
19	20306	4	•• Locknut 7/16-14
20	20309	9	•• Locknut Esna 5/8-11
21	20310	2	•• Locknut 3/4-10
22	20357	2	•• Flatwasher 5/8
23	22123	2	•• Bolt 14-2 x 140MM
24	21984	2	•• Hair Pin Cotter
	08626	1	•• <b>Kit Light Elevation</b>
25	11368	2	••• Bracket
26	20095	2	••• Bolt H 1/2-13 x 1-1/2" Gr. 5
27	20307	2	••• Locknut Esnaq 1/2-13
28	11255	1	<b>LIFT FRAME (Tubular)</b>
	11" Sector		
Item	Part No.	Qty.	Description
	06249	1	<b>SECTOR -A-FRAME CARTON</b>
	12793	1	• Sector
29	13319	1	• A- Frame (15" x 39" x 23-1/2")
	07017	3	• Trip Spring
	09916	1	• Marker Kit
	08341	1	• <b>HARDWARE BAG</b>
	09119	2	•• Pivot Pin w/Cotter
30	11101	2	•• Hinge Pin
31	22083	2	•• Linch Pin
	09125	1	•• King Bolt w/Locknut
	09124	3	•• Eye Bolt w/Locknuts & Cap

Meyer Products reserves the right, under its continuing product improvement program, to change construction or design details, specifications and prices without notice or without incurring any obligation.

# GENERAL INFORMATION

**CAUTION:** Always disconnect battery before beginning installation.

**DO NOT BURN** holes or **WELD** vehicle frame. This may cause frame failure.

After first use, retighten all mounting bolt connections to specified torque. All mounting bolt connections to be checked periodically for tightness.

Locknuts are furnished **DO NOT** tighten bolts and nuts until installation is complete (unless otherwise specified), then be sure to tighten all attaching parts per specified torque chart.

**NOTE:** It is important that the Meyer harness, all wires from the Meyer light switch, and all other electrical wires be routed around hot or moving engine parts, and any sharp metal. Protection must be provided to guard against wire damage at these points. All excess or loose wires must be neatly secured using wire ties.




Check contents against the parts list to determine all are correct and included, and also to familiarize yourself with them.

**SAFETY PRECAUTIONS** should be used when **Hydraulic Unit is in OPERATION** and plow is in a **RAISED** position. **Lower plow to ground when vehicle is PARKED.**

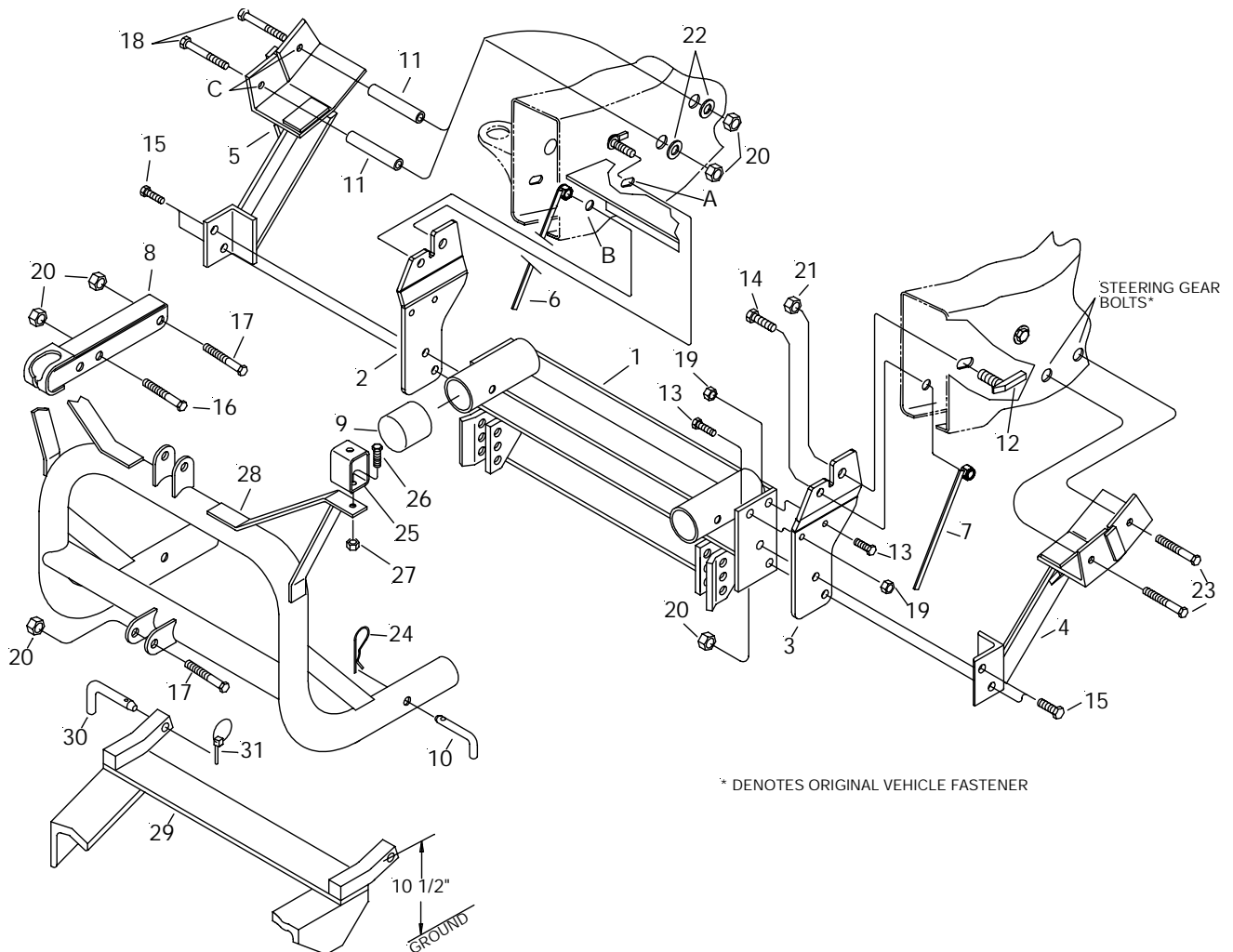
**OVERHAUL** and **SERVICE INFORMATION** are covered on separate instructions.

Follow these instructions explicitly. Warranty does not apply to a Meyer product which has been negligently or improperly assembled or installed.

## TORQUE CHART FOOT LBS.

Bolt Nut Size	Gr. 	Gr. 	Gr. 
1/4 - 20	2	4 - 5	
5/16 - 18		9 - 11	
3/8 - 16		17 - 20	
7/16 - 14			26 - 29
1/2 - 13			42 - 46
5/8 - 11			64 - 72
3/4 - 10			127 - 141
			227 - 251
			60 - 66
			90 - 100
			179 - 198

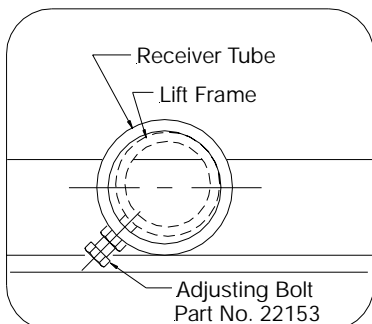
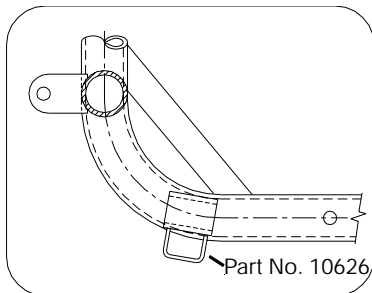
Meyer Products assumes no responsibility for installations not made in accordance with these instructions.



\* DENOTES ORIGINAL VEHICLE FASTENER

## INSTALLATION INSTRUCTIONS

- A. Remove 3 bolts from both the L.H. (driver) and R.H. (passenger) front bumper supports at the radiator mounting brackets. Retain all hardware. These bolts will be reinstalled later.
- B. Attach sidemembers (2&3) to vehicle frame at slot "A" using Special Bolt (12), and 3/4" Locknut (21). Note: This slot will need to be enlarged to accommodate Special Bolt (12). **Do not tighten at this time.**
- C. Drill a 11/16" hole "B" on the inside of both frame rails using the hole in sidemembers (2&3) as a template. Note: Be certain that the sidemembers are perpendicular to the ground before drilling. Attach sidemembers at hole by using 5/8-11 x 1-1/2 bolts (14) and handle nuts (6&7). **Do not tighten at this time.**
- D. Position Clevis Frame (1) to the inside of sidemembers (2&3). Attach clevis frame using 7/16-14 x 1-1/4 bolts (13) and 7/16-14 locknuts (19). Note: Front bolt is installed from inside-out while the rear hole is installed from the outside-in. **Do not tighten at this time.**
- E. Remove the two lower steering gear mounting bolts (\*). Retain all hardware. Attach driver-side Mounting bracket (4) to vehicle frame using special replacement steering gear bolts (23). Attach the other end of the mounting bracket (4) to the sidemember (3) and clevis frame (1) using 5/8-11 x 2-1/4" bolt (15) and locknut (20). **Do not tighten at this time.**
- F. Temporarily attach (R.H.) passenger -side mounting bracket (5) to sidemember (2) and clevis frame (1) using 5/8-11 x 2-1/4" bolts (15) and locknut (20). Making certain the the mounting bracket (5) is flat against bottom of vehicle frame, using hole "C" as a template, drill two 21/32" holes thru vehicle frame rail. Remove mounting bracket (5) and ream holes in the outer frame rail only to 27/32".



- G. Insert the tube spacers (11) inside the vehicle frame. Re-attach the mounting bracket (5) to the sidemember and clevis frame. Attach the upper end of the mounting bracket to the vehicle frame using 5/8-13 x 4" bolts (18), flatwashers (22) and locknuts (20) per illustration.
- H. Tighten all fasteners to their proper torque. Tighten bolts in the same order they were assembled to the vehicle.
- I. Reinstall bolts for front bumper supports at the radiator mounting bracket.

**Important Notice:** Prior to installation of the lift frame (25), it will be necessary to identify the lift frame being installed. Current production lift frames have additional stops (Part No. 10626) tack welded to the existing stops. (See illustration.) Earlier production lift frames will not have these stops. Depending upon the S.A.F. Carton being installed, additional stops may need to be added or removed.

- J. When installing S.A.F. Carton 06249, lift frame should have the additional stops (Part No. 10626).

**Note:** Before installing lift frame tubing to clevis frame, liberally coat ends of lift frame with chassis grease / anti-seize lubricant.

- K. Install Lift Frame (28) into the tubes on the clevis frame. Turn adjusting bolts in until contact is made with lift frame.

**Caution:** Do not over tighten adjustment bolts. Adjust bolts for minimum clearance between lift frame and receiver tubes while still allowing for ease of lift frame removal. See illustration. Secure lift frame (28) to clevis frame (1) using hinge Pins (10) and hair pin cotters (24).

- L. Attach lift arm (8) to lift frame (28) using 5/8-11 x 3-1/4" bolt (17) and locknut (20). Mount Hydraulic unit to lift frame using 5/8-11 x 3-1/4" bolt (17) and locknut (20), and to lift arm (8) using 5/8-11 x 2-3/4" bolt (16) and locknut (20). **(SEE WARNING)**

- M. Install hydraulic system and snow plow lights per separate instructions.

- N. Pre-Assemble Moldboard Assembly, A-Frame (29), Sector, ect., per separate instructions.

- O. Attach the A-Frame chain to the Lift Arm (8) allowing sufficient slack to enable the Moldboard to follow ground contour while plowing.

**Note:** When the lift frame module (28) is removed from the vehicle, the insides of the clevis frame (1) receiver tubes and outside ends of the lift frame should be coated with chassis grease/anti-seize lubricant and the protective receiver tube caps (9) install over the clevis frame receiver tubes.