

## PARTS & INSTALLATION INSTRUCTIONS

### MEYER SNOW PLOW MOUNTING for 1973 - 1987

### GMC and Chevrolet V Series 4x4 Models

#### IMPORTANT NOTICE

**End user must be given this instruction sheet prior to delivery of this Snow Plow.**

The equipment you have just purchased should only be used on vehicles equipped with the Manufacturer's Snow Plow Preparation Packages. Snow Plowing without the original Snow Plow Preparation Package may damage your vehicle and the added weight to the equipment may impair the operation and control of the vehicle. Snow Plowing with a vehicle that the manufacturer does not recommend for that purpose may void your new vehicle warranty. If your vehicle is not originally equipped with the Snow Plow Package, additional parts may be necessary before snow plowing. Owners of these vehicles should consult their dealers before purchase or installation of such parts. CAUTION: the installation, on any vehicle, of these parts is not a full substitute for the original equipment Snow Plow Preparation Package.

**Warning: Lift Arm extends beyond bumper of vehicle. To minimize damage from a front-end collision, Lift Arm should be removed from vehicle when Snow Plow is removed.**

#### PARTS LIST

Item	Part No.	Qty.	Description		
	17078	1	<b>MOUNTING CARTON</b>		
1	13595	1	• Lift Frame		
2	10408	1	• Side Member R.H.		
3	10409	1	• Side Member L.H.		
4	10400	1	• Clevis Frame		
5	10398	2	• Side Member Strap		
6	10514	1	• Lift Arm		
7	10688	2	• Bumper Support, Upper		
8	10689	2	• Bumper Support, Lower		
9	10016	1	• Bumper Extension, R.H.		
---	10017	1	• Bumper Extension, L.H.		
10	10691	2	• Outer Bumper Bracket, Bottom		
	08509	1	• <b>HARDWARE BAG</b>		
11	20094	2	•• Bolt H 1/2-13 x 1-1/4" Gr.5		
12	20095	8	•• Bolt H 1/2-13 x 1-1/2" Gr.5		
13	20140	10	•• Bolt H 5/8-11 x 1-3/4" Gr.5		
14	20141	2	•• Bolt H 5/8-11 x 2" Gr.5		
15	20144	1	•• Bolt H 5/8-11 x 2-3/4" Gr. 5		
16	20147	2	•• Bolt H 5/8-11 x 3-1/2" Gr. 5		
17	20165	2	•• Bolt H 3/4-10 x 2-1/4" Gr.5		
18	20167	2	•• Bolt H 3/4-10 x 2-3/4" Gr.5		
19	20307	10	•• Locknut Esna 1/2-13		
20	20309	15	•• Locknut Esna 5/8-11		
21	20310	4	•• Locknut 3/4-10		
22	20357	2	•• Flatwasher 5/8		
23	20355	6	•• Flatwasher 1/2		
24	10029	4	•• Reinforcement Plate		
25	21939	2	•• Bevel Washer		
	21976	2	•• Battery Connectors		
Item	11" Sector Part No.	Qty.	15" Sector Part No.	Qty.	Description
	16288	1	06249	1	<b>SECTOR - A-FRAME CARTON</b>
	12326	1	12793	1	• Sector
	13306	1	13319	1	• A- Frame
	07017	3	07017	4	• Trip Spring
	09916	1	09916	1	• Marker Kit
	08166	1	08341	1	• <b>PLOW HARDWARE BAG</b>
	09119	2	09119	1	•• Pivot Pin w/Cotter
	11101	2	11101	2	•• Hinge Pin
	22083	2	22083	2	•• Linch Pin
	09122	1	09125	1	•• King Bolt w/Locknut
	09124	3	09124	4	•• Eye Bolt w/Locknuts

Parts indented are included in the carton, bag or assembly under which they are indented. When ordering parts, furnish Part No., Name, and Description. Also furnish Vehicle Model and Year. Type of Hydraulic Unit and Moldboard Size.

Meyer Products reserves the right, under its continuing product improvement program, to change construction or design details, specifications and prices without notice or without incurring any obligation.

# GENERAL INFORMATION

**CAUTION:** Always disconnect battery before beginning installation.

**DO NOT BURN** holes or **WELD** vehicle frame. This may cause frame failure.

After first use, retighten all mounting bolt connections to specified torque. All mounting bolt connections to be checked periodically for tightness.

Locknuts are furnished **DO NOT** tighten bolts and nuts until installation is complete (unless otherwise specified), then be sure to tighten all attaching parts per specified torque chart.

**NOTE:** It is important that the Meyer harness, all wires from the Meyer light switch, and all other electrical wires be routed around hot or moving engine parts, and any sharp metal. Protection must be provided to guard against wire damage at these points. All excess or loose wires must be neatly secured using wire ties.

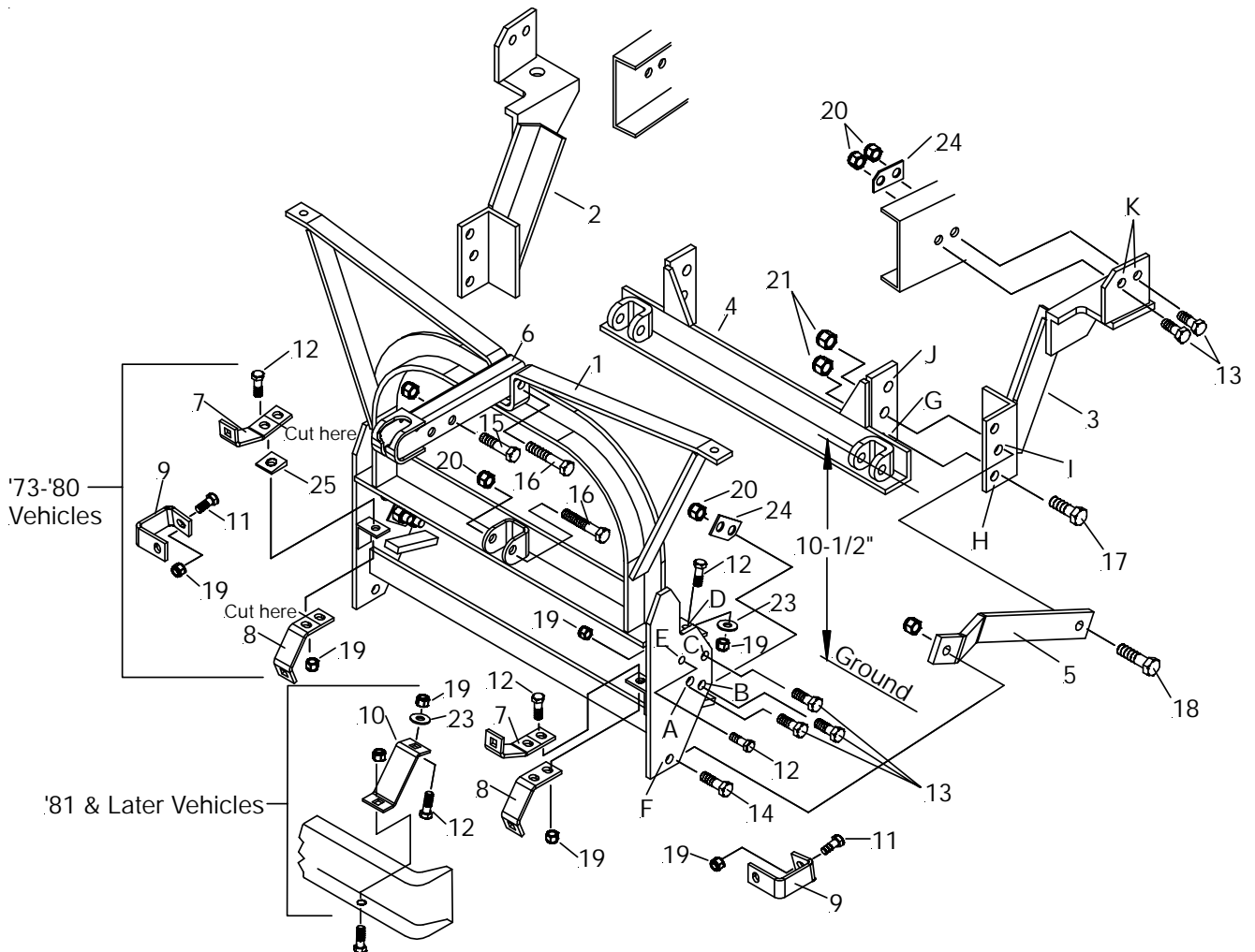
Check contents against the parts list to determine all are correct and included, and also to familiarize yourself with them.

**SAFETY PRECAUTIONS** should be used when **Hydraulic Unit is in OPERATION** and plow is in a **RAISED** position. **Lower plow to ground when vehicle is PARKED.**

**OVERHAUL** and **SERVICE INFORMATION** are covered on separate instructions.

Follow these instructions explicitly. Warranty does not apply to a Meyer product which has been negligently or improperly assembled or installed.

NOTE		
	use holes	ream 11/16" holes
1973 - 1980 Vehicles	A, B, C	
1981 and later	D, E	B



## INSTALLATION INSTRUCTIONS

**CAUTION:** When drilling holes in vehicle frame, move brake lines and electrical wiring from path of drill. Brake lines must be clear of fasteners.

A. Remove front bumper and bumper braces, retain all original parts.

**B. For 1973 - 1980 Vehicles:**

Attach lift frame (1) to vehicle frame with 5/8-11 x 1-3/4" bolts (13), reinforcement plate (24) and locknuts (20) at holes "A" and "B". Place 5/8-11 x 1-3/4" Bolt (13), flatwasher (22) and locknut (20) in hole "C".

**For 1981 & Later Vehicles:**

Use 1/2-13 x 1-1/2" bolt (12, flatwasher (23) and locknut (19) in hole "D" and "E" of lift frame (1). Mount headlights to lift frame (1) being certain there is 1" clearance at the back of the headlights when hood is opened.

With the lift frame held in position, use hole "B" in lift frame (1) as a template to ream 11/16 hole in vehicle frame. Install 5/8-11 x 1-3/4" bolt (13), flatwasher (22) and locknut (20).

C. Bolt side member straps (5) to inside of lift frame (1) at hole "F" with 5/8-11 x 2" bolts (14) and locknuts (20).

D. Attach side members (2&3) to clevis frame (4) aligning holes "G" and "H" with 3/4-10 x 2-1/4" bolts (17) and locknuts (21). Attach side member strap (5) at hole "I" of side members (2&3) with 3/4-10 x 2-3/4" Bolts (18) and locknuts (21).

**For K-30 Model Vehicles:**

Align hole "I" of side members (2&3), "J" of clevis frame (4) and hole in side member strap (5) using 3/4-10 x 2-3/4" bolt (18) and locknut (21). Insert 3/4-10 x 2-1/4" bolt (17) and locknut (21) in hole "H" of side members (2&3) and middle hole of clevis frame (4).

E. Raise side members (2&3) until they meet vehicle frame. While holding them tight against underside of vehicle frame, use holes "K" as guides to drill 21/32" diameter holes. Check backside of frame for brake lines, wires, ect. Attach using 5/8-11 x 1-3/4" bolts (13), reinforcement plate (24) and locknut (20).

F. Attach lift arm (6) to lift frame (1) with 5/8-11 x 3-1/2" bolt (16) and locknut (20).

G. To attach bumper on 1973-1980 vehicles, proceed as follows: Trim second hole off back of both the upper and lower bumper supports (7&8). Place upper bumper support (7) and beveled washer (25) on top of clip located on inside of lift frame (1). The beveled washer should be positioned so it slopes forward. Place lower bumper support (8), underneath clip located on inside of lift frame (1). Secure, using 1/2-13 x 1-1/2" bolt (12) and locknut (19). Attach R.H. and L.H. bumper extensions (9) to vehicle bumper braces with 1/2-13 x 1-1/4" bolt (11) and locknut (19). It may be necessary to temporarily loosen vehicle bumper brace where it attaches to frame to facilitate alignment with bumper holes.

H. To attach bumper on 1981 and later vehicles proceed as follows: Place upper and lower bumper supports (7 & 8) on top of clip located on inside of lift frame (1). Secure through second (back) set of holes using 1/2-13 x 1-1/2" bolt (12) and locknut (19). Attach R.H. and L.H. bumper extensions (9) to vehicle bumper braces with 1/2-13 x 1-1/4" bolt (11) and locknut (19). The bottom bumper bracket (10) is attached to vehicle bumper brace using 1/2-13 x 1-1/2" bolt (12), flatwasher (23) and locknut (19). It may be necessary to temporarily loosen vehicle bumper brace where it attaches to frame to facilitate alignment with bumper holes.

I. Before tightening any bolts, pull top of lift frame (1) forward to take out slack in bolt holes. Tighten all bolts per specification torque chart.




J. Re-attach bumper using original vehicle hardware and bevel washer (25) if vehicle is 1973-1980. Tighten all bumper bolts.

K. Install hydraulic system and snow plow lights per separate instructions.

L. Assemble moldboard to sector and A-frame (26) per separate instructions.

M. Hook the A-Frame chain to the Lift Arm (6) allowing sufficient slack to enable the Moldboard to follow ground contour while plowing.

### TORQUE CHART FOOT LBS.

Bolt Nut Size	Gr. 2 	Gr. 5 	Gr. 8 
1/4 - 20	4 - 5		
5/16 - 18	9 - 11		
3/8 - 16	17 - 20	26 - 29	
7/16 - 14		42 - 46	60 - 66
1/2 - 13		64 - 72	90 - 100
5/8 - 11		127 - 141	179 - 198
3/4 - 10		227 - 251	

Meyer Products assumes no responsibility for installations not made in accordance with these instructions.