

PARTS & INSTALLATION INSTRUCTIONS

E-46 & E-46H

MEYER ELECTRO TOUCH™

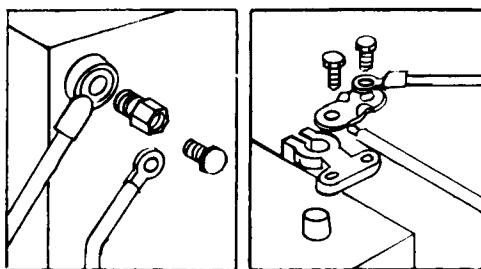
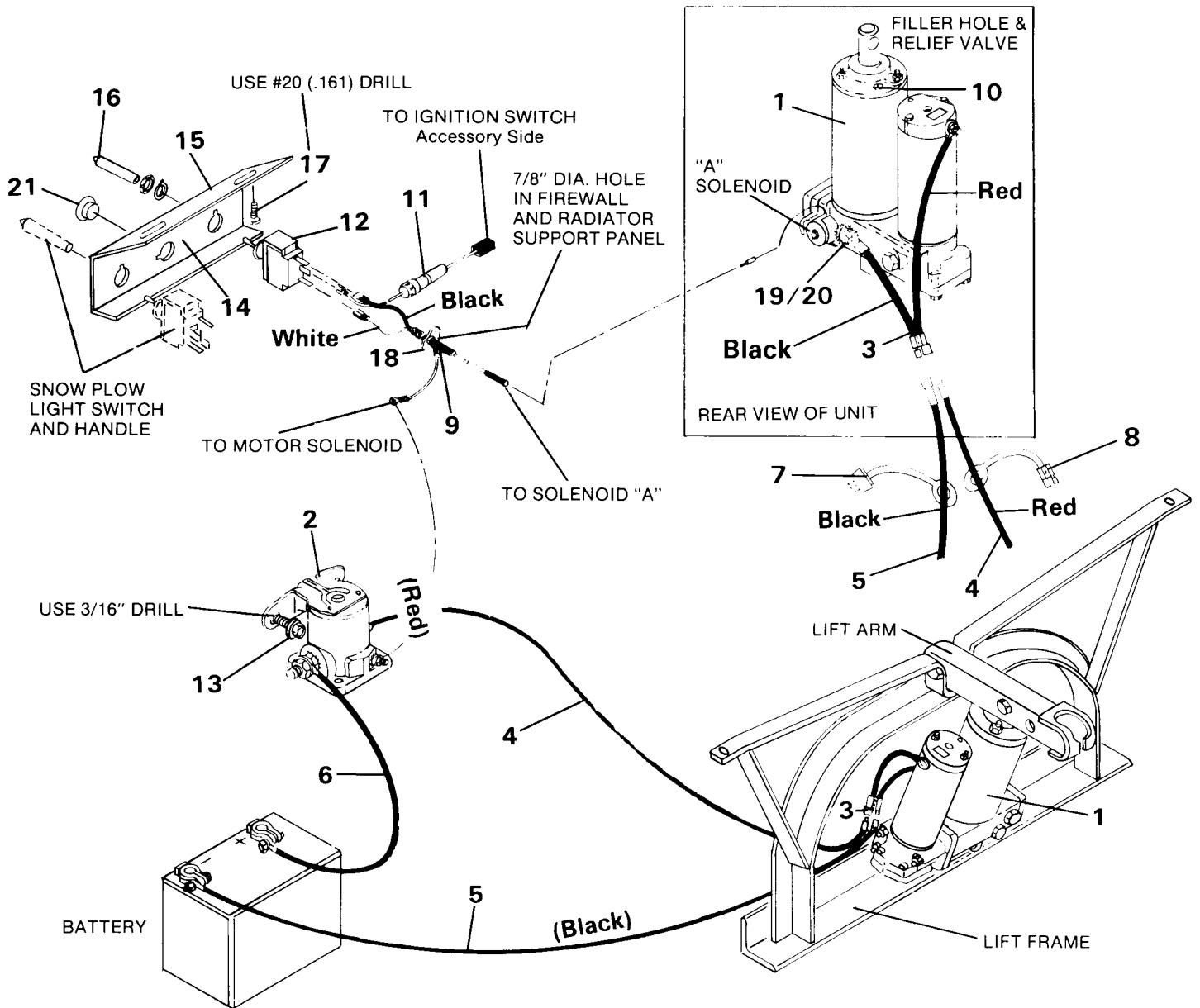


Figure 1

Figure 2

ADDITIONAL BATTERY CONNECTIONS

- When attaching cables to battery with side post terminals use M.P.I. adapter Part #21976 and attach as shown in Figure 1.
- Fig. 2 illustrates the method of using a repair type terminal connector (not furnished) in place of the spring type connector which is original equipment on some vehicles.

PARTS LIST

ITEM	E-46	E-46H	QTY.	DESCRIPTION
1	15500	15501	1	LIFT ASSEMBLY (COMPLETE)
	15508	15509	1	• Lift Assembly (Unit Only)
2	15370	15370	1	• Starter Solenoid
3	15670	15670	1	• Pigtail Ass'y.
4	15671	15671	1	• Power Cable - 63" - Red
5	15672	15672	1	• Ground Cable - 42" - Black
6	05024	05024	1	• Power Cable - 36"
7	15669	15669	1	• Weather Plug - Solenoid Wires
8	36248	36248	1	• Weather Plug - Power Cables
9	15483	15483	1	• Harness Assembly
	13003	13003	1	• Pin Sect. 11"
	13004	13004	1	• Pin Sect. 15"
10	08473	08473	1	• Relief Valve Kit
11	15428	15428	1	• HARDWARE BAG
	15484	15484	1	•• Fuse Assy. w/20 amp Fuse
12	21921	21921	1	•• Switch
13	21398	21398	2	•• Self Tap Screw #1/4 - 14 x 3/4"
14	15656	15656	1	•• Switch Bracket & Decal Assembly
15	22070	22070	1	••• Decal
16	15375	15375	1	•• Handle - Yellow
17	20841	20841	2	•• Self Tap Screw #12 x 1/2"
18	21832	21832	2	•• Bushing - Split
19	15102	15102	1	•• Bolt H 5/16" - 18" x 1/2" GR. 2
20	21400	21400	1	•• Lockwasher 5/16" Int./Ext. Tooth
	21953	21953	1	•• Decal, Danger
21	22069	22069	1	•• Switch Bracket Plug

Parts indented are included in the carton, bag or assembly under which they are indented.

NOTES:

1. Connect ground cable to negative side of battery for a solid connection to ground.
2. CAUTION: Route all cables away from moving engine parts and manifolds.
3. For weather protection, tape all electrical connections at front of vehicle. When Lift (1) is removed, protect wires with weather plugs (7 & 8).
4. The vehicle must be equipped with a "Heavy Duty Battery" (70 amp. hr. min.) "Alternator" (60 amp. min.) to obtain maximum performance.
5. Follow these instructions explicitly. Warranty does not apply to a Meyer Product which has been negligently or improperly assembled or installed.

GENERAL INFORMATION

CAUTION: Always disconnect battery prior to installation.

Check contents against the parts list to determine all are correct and included.

When ordering parts, furnish Part No., Name and Description, Type of Hydraulic Unit and Snow Plow Size.

SAFETY PRECAUTIONS should be used when Electro Touch™ Unit is in OPERATION and Plow is in a RAISED position. LOWER Plow to ground when vehicle is PARKED.

WARNING

Lift arm extends beyond bumper of vehicle. To minimize damage from a front-end collision, lift arm should be removed from vehicle when snow plow is removed.

OVERHAUL and SERVICE INFORMATION is covered on separate Instructions.

For Electro Touch™ Unit Maintenance, refer to "OWNER'S MANUAL."

Meyer Products, reserves the right, under its continuing product improvement program, to change construction or design details, specifications and prices without notice or without incurring any obligation.

INSTALLATION INSTRUCTIONS

1. Install Lift Assembly (1) with Electric Motor toward right hand side of vehicle using bolts supplied in mounting carton. When using an E-46 (all snow plows except HM-9 and HM-10), attach the Lift Ram in the inner hole of the Lift Arm. When using an E-46H (HM-9 and HM-10 snow plows only), attach the Lift Ram in the outer hole of the Lift Arm.
Remove shipping plug from filler hole and install Relief Valve kit (10). Tighten to 100-125 in. lbs.
2. Install Switch (12) with Switch Bracket (14) in a suitable location on dash panel using Self Tapping Screws (17), use #20 (.161) drill.
3. Use Bushings (18) where Harness (9) is routed through firewall and radiator support panel. Requires 7/8" diameter hole.
4. Plug Switch into proper Harness leads (9). Plug unused hole of bracket with Plug.
5. Install Starter Solenoid (2) on vehicle fender well with Screws (13). (The base must be grounded to operate.) Slide Weather Plugs (7&8) over Power Cable (4) and Ground Cable (5). Install 36" Power Cable (6) from positive (+) terminal of battery to one of the large terminals on Starter Solenoid (2). Install Red Power Cable (4) to other large terminal on Starter Solenoid (2) and route it to front grill area of truck. Attach Black Ground Wire (5) to negative (-) terminal of battery and route it to front grill area of truck. Install Pigtail (3) to Lift Unit (1) with the red leg to the motor stud and black leg to the base of Lift Unit (1), using Bolt (19) and Lockwasher (20). Place Lockwasher (20) **between** cable terminal and base so it bites into paint for proper ground.

NOTE:

Proper fluid level is 1-1/2" below filler hole. It must be checked with lift arm fully retracted.