

# Assembly Instructions

## Standard Operating System with Hands Free Plowing

Light Duty: 53220  
Steel: 53650, 53750, 53800  
Stainless: 53685, 53785, 53885



**NOTICE:** Meyer Products LLC reserves the right, under its continuing product improvement program, to change construction, design, details, specifications, and prices without notice or without incurring any obligation. Meyer Products LLC assumes no responsibility for installations not made in accordance with these instructions.

## Table of Contents

General Information.....	1
Black Iron Parts Lists.....	2-5
Moldboard Parts List.....	6-7
Build Assembly.....	8
Standard Operating System Wiring.....	9
Plow Assembly & Adjustments.....	10-11
Hydraulics.....	12
Mounting Plow.....	13
Dismounting Plow.....	14
Pre-Delivery Inspection.....	15
Registration.....	15

Please visit our website to find our most updated technical information; including installation instructions, user manuals, parts diagrams, EZ Troubleshooter, and more.

Please see your owner's manual for Pre-Season, Post-Season, and General Maintenance.

[www.meyerproducts.com](http://www.meyerproducts.com)

## **CAUTION** GENERAL INFORMATION

Always disconnect battery prior to installation.

SAFETY PRECAUTIONS should be used when Quik Lift® is in a RAISED position.

LOWER plow to the ground when vehicle is PARKED.

OVERHAUL and SERVICE information is covered on separate instructions.




Note:

1. Connect ground cable to negative side of battery for a solid connection to ground.
2. **CAUTION** Route all cables away from moving engine parts, Manifolds, and sharp sheet metal.
3. For weather protection, coat all connections with Meyer Dielectric Grease Part No. 15632
4. The vehicle must be equipped with a "Heavy Duty Battery" (70 Amp, Hr. Min.), 550 C.C.A. and "Alternator" (60 Amp. Min.) to obtain maximum performance.
5. Follow these instructions explicitly. Warranty does not apply to a Meyer product which has been negligently or improperly assembled or installed.

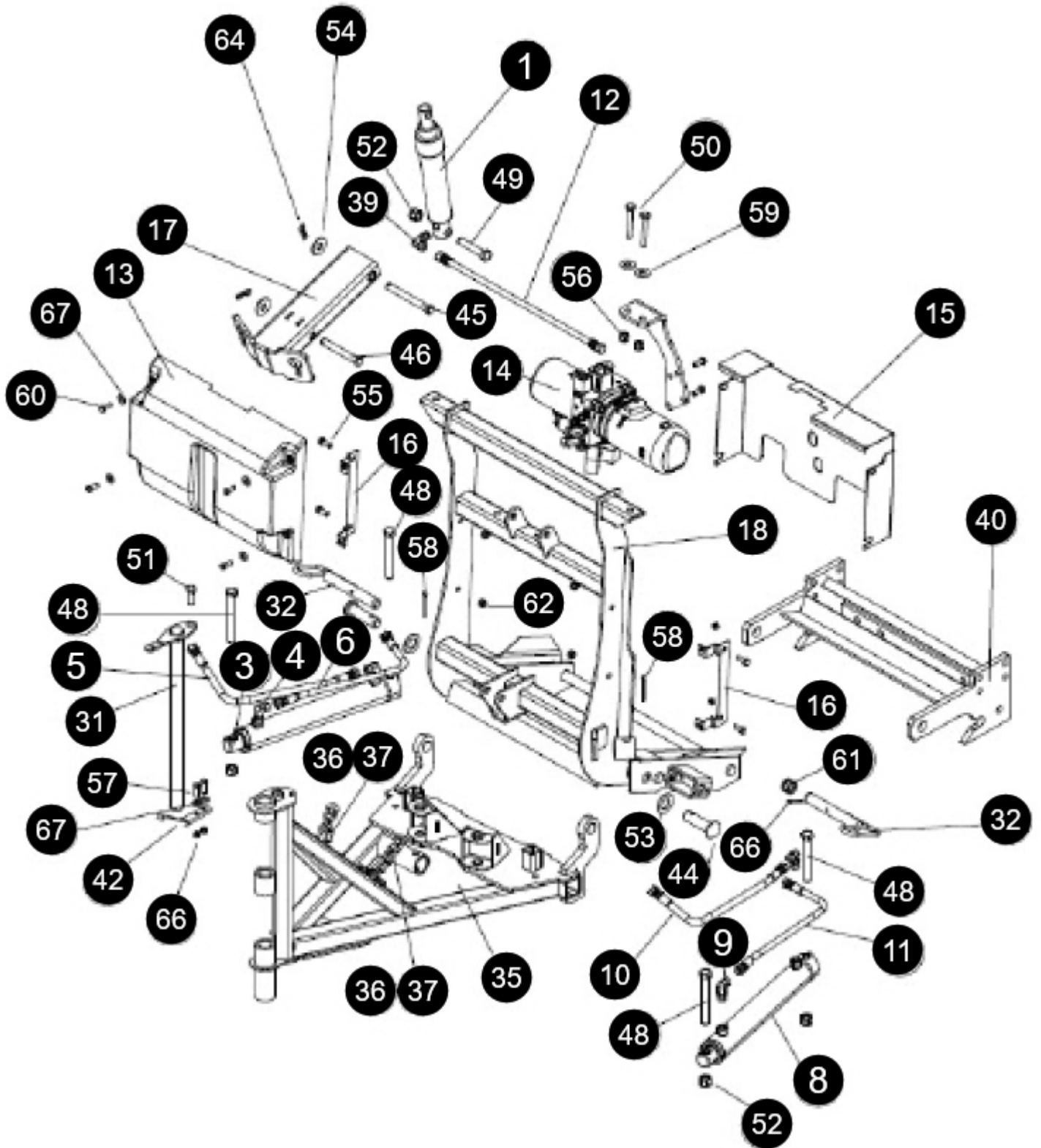
### Tool List for Plow Assembly

Pliers	9/16" socket
1/2" socket	3/4" box wrench
1/2" box wrench	15/16" box wrench
9/16" box wrench	15/16" deep well socket

### TORQUE CHART FOOT

Bolt Nut Size	Gr. 2 	Gr. 5 	Gr. 8 
1/4-20	4-5		
5/16-18	9-11		
3/8-16	17-20	26-29	
7/16-14		42-46	60-66
1/2-13		64-72	99-100
5/8-11		127-141	179-198

Super-V3 Light Duty: 53220



## Black Iron Parts List

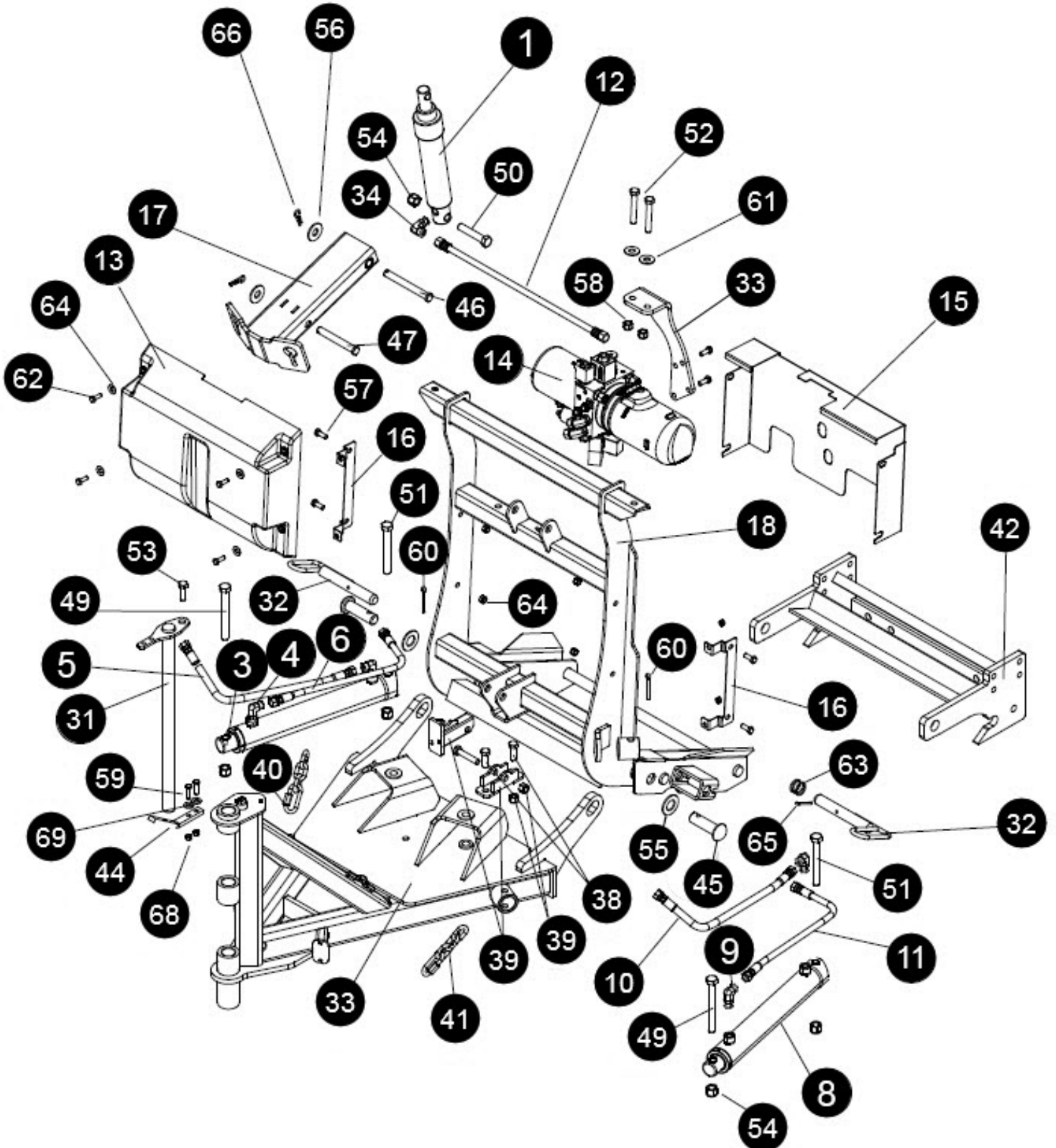
### Super-V3 Light Duty: 53220

Item	Part #	QTY	Description
1	05818	1	Lift Ram 1.75 x 8"
2	07910	1	RH Ram Assy 1-1/4 x 12 DA SV3LD
3	05756	1	• Ram 1-1/4" x 12" DA
4	22866	2	• SAE Mx3/8 90° Elbow
5	22941	1	• Hose 3/8" x 33"
6	22884	1	• Hose 1/4" x 33"
7	07909	1	LH Ram Assy 1-1/4 x 12 DA SV3ld
8	05756	1	• Ram 1-1/4" x 12" DA
9	22866	2	• SAE Mx3/8 90° Elbow
10	22941	1	• Hose 3/8" x 33"
11	22921	1	• Hose 1/4" x 38"
12	22883	1	Hose 1/4" x 22"
13	14596	1	Horiz. Hyd Front Cover E73/V73
14	16025	1	Hyd V73 Horiz. 12V
15	14228	1	Horiz. Hyd Rear Cover
16	14290	2	Horiz. Hyd Cover Bracket
17	14589	1	Lift Arm – SV3 7.5LD
18	18965	1	Lift Frame
19	16639	1	Accessory Box – SV3
20	09917	1	• Plow Marker Kit
21	-----	2	•• Plow Marker
22	20027	4	•• Bolt H 5/16-18 x 1" Gr5
23	20304	4	•• Locknut 5/16-18
24	20352	4	•• Flatwasher 5/16"
25	22022	1	• Crankstand
26	23025	1	• Std Op Sys Power Harness
27	23037	1	• DLX Controller SOS
28	23057	1	• 7 Pin Rnd 4 Pin Flat T-Con
29	23059	1	• SOS HFP Vehicle Harness
30	23067	1	• NS LED 12V Plow Light Kit
31	13207	1	Pivot Pin Super V3
32	11859	2	Blue Handle Pin
33	09514	1	Inner Cutting Edge RH
34	09515	1	Inner Cutting Edge LH

Item	Part #	QTY	Description
35	14557	1	A-frame SV3 7.5LD
36	20800	2	• Quick Link 5/16"
37	21543	2	• Chain 5/16 x 29"
38	14206	2	Inner Cut Edge Strap
39	22866	1	SAE Mx3/8 90° Elbow
40	14700	1	Clevis
41	12548	1	Top Deflector SV3 LD 7.5
42	13724	1	Deflector Brace
43	14613	2	Top Deflector Strap SV3 LD
44	22436	2	Pin 1 x 3"
45	22989	1	Pivot Pin 5/8 x 5-3/4"
46	20152	1	BOLT H 5/8 11 X 5 G5 ZN
47	21960	4	Bolt C 5/8-11 x 2-1/2"
48	20150	4	Bolt H 5/8-11 x 4-1/2 Gr5
49	20146	1	Bolt H 5/8-11 x 3-1/4 Gr5
50	20102	2	Bolt H 1/2-13 x 3-1/4 Gr5
51	20095	1	Bolt H 1/2-13 x 1-1/2 Gr5
52	20309	9	5/8-11 Locknut
53	21262	2	SAE Flatwasher 1"
54	-	-	-
55	20049	4	Bolt H 3/8-16 x 1 gr2
56	20307	2	1/2-13 Locknut
57	20028	7	Bolt H 5/16-18 x 1-1/4 Gr2
58	20420	2	Cotter Pin 1/4 x 2"
59	20355	2	Flatwasher 1/2
60	20027	12	Bolt H 5/16-18 x 1 Gr2
61	814000005	2	Pushbeam Spring
62	20305	4	3/8-16 Locknut
63	20406	2	Cotter Pin 3/16 x 1-1/2"
64	20309	2	LOCKNUT ESNA 5/8-11 ZINC PL
65	20329	1	Lockwasher 1/2"
66	20304	15	5/16-18 Locknut
67	20352	15	Flatwasher 5/16"
68	15187	1	Breather, Plastic 3/4" NPT

Black Iron Parts List

Super-V3: 53650, 53750, 53800  
Super-V3 Stainless: 53685, 53785, 53885



## Black Iron Parts List

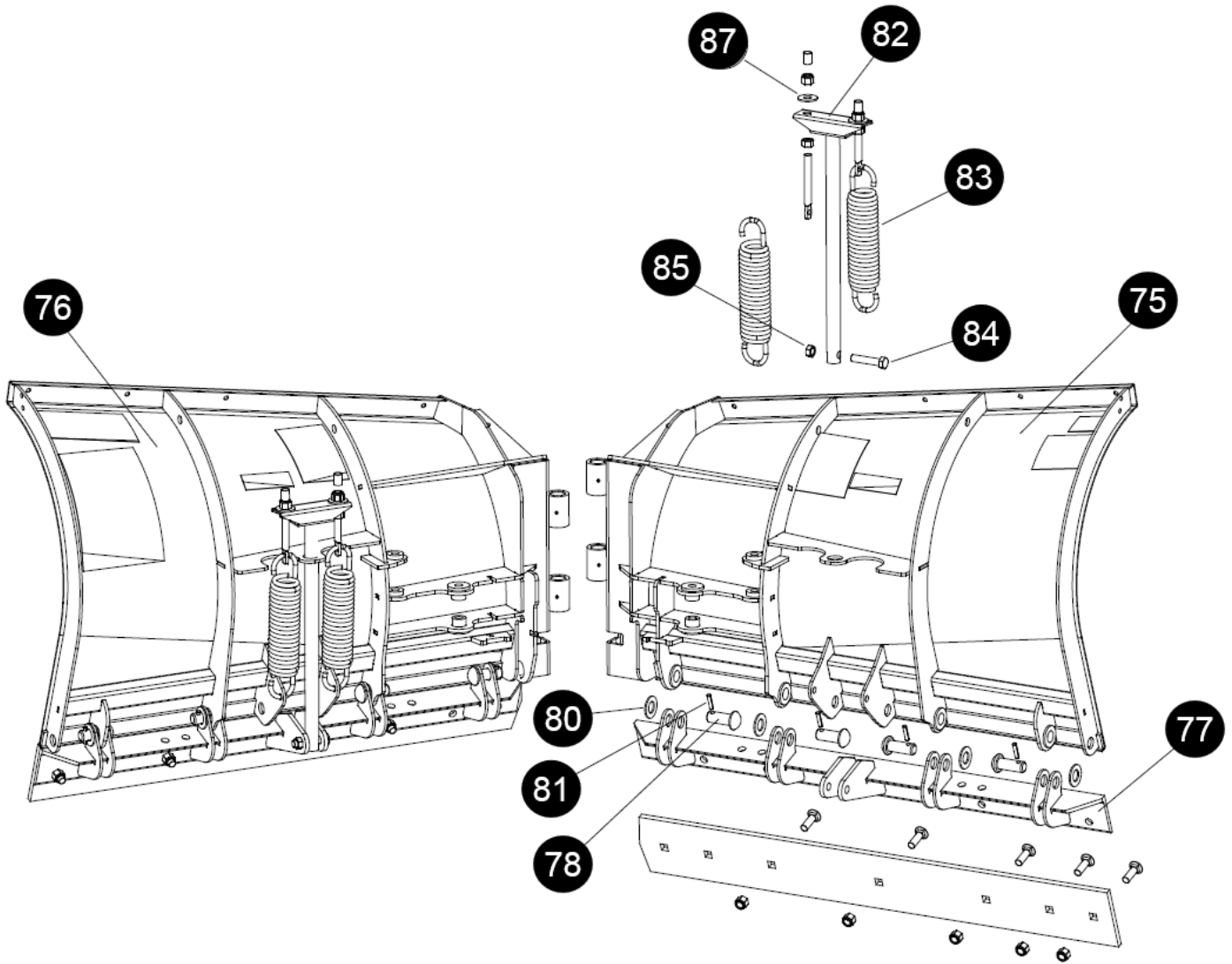
### Super-V3: 53650, 53750, 53800 Super-V3 Stainless: 53685, 53785, 53885

Item	Part #	QTY	Description
1	05818	1	Lift Ram 1.75 x 8"
2	07850	1	RH Ram Assembly 1-1/2 x 12 DA
3	05755	1	• Ram 1-1/2" x 12" DA
4	22866	2	• SAE Mx3/8 90° Elbow
5	23077	1	• Hose 3/8" x 48"
6	22885	1	• Hose 1/4" x 54"
7	07845	1	LH Ram Assembly 1-1/2 x 12 DA
8	05755	1	• Ram 1-1/2" x 12" DA
9	22866	2	• SAE Mx3/8 90° Elbow
10	23077	1	• Hose 3/8" x 48"
11	22921	1	• Hose 1/4" x 38"
12	22883	1	Hose 1/4" x 22"
13	14596	1	Horiz. Hyd Front Cover E73/V73
14	16031	1	Hyd V70H Horiz SOS 12V
15	14228	1	Horiz. Hyd Rear Cover
16	14290	2	Horiz. Hyd Cover Bracket
17	14439	1	Lift Arm – SV3
18	18965	1	Lift Frame
19	16641	1	Accessory Box – SV3
20	09917	1	• Plow Marker Kit
21	-----	2	•• Plow Marker
22	20027	4	•• Bolt H 5/16-18 x 1" Gr5
23	20304	4	•• Locknut 5/16-18
24	20352	4	•• Flatwasher 5/16"
25	22022	1	• Crankstand
26	23025	1	• Std Op Sys Power Harness
27	23074	1	• DLX V70H Controller SOS
28	23057	1	• 7 Pin Rnd 4 Pin Flat T-Con
29	23059	1	• SOS HFP Vehicle Harness
30	23067	1	• NS LED 12V Plow Light Kit
31	13207	1	Pivot Pin Super V3
32	11859	2	Blue Handle Pin
33	14691	1	Hyd V70H Mounting Arm
34	22866	1	SAE Mx3/8 90° Elbow
35	09514	1	Inner Cutting Edge RH
36	09515	1	Inner Cutting Edge LH

Item	Part #	QTY	Description
35	14472	1	A-frame SV3 (8.5/9.5)
36	14459	1	A-frame SV3 (10.5)
37	14521	1	• Lift Frame Stand
38	20095	2	• Bolt H 1/2-13 x 1-1/2 Gr5
39	20307	2	• 1/2-13 Locknut
40	20800	2	• Quick Link 5/16"
41	21541	2	• Chain 5/16 x 27"
42	14700	1	Clevis
43	12536	1	Top Deflector Super V
44	13724	1	Deflector Brace
45	22436	2	Pin 1 x 3"
46	22989	1	Pivot Pin 5/8 x 5-3/4"
47	20152	1	BOLT H 5/8 11 X 5 G5 ZN
48	21960	4	Bolt C 5/8-11 x 2-1/2"
49	20153	2	Bolt H 5/8-11 x 5-1/2 Gr5
50	20146	1	Bolt H 5/8-11 x 3-1/4 Gr5
51	20152	2	Bolt H 5/8-11 x 5 Gr5
52	20102	2	Bolt H 1/2-13 x 3-1/4 Gr5
53	20095	1	Bolt H 1/2-13 x 1-1/2 Gr5
54	20309	9	5/8-11 Locknut
55	21262	2	SAE Flatwasher 1"
56	-	-	-
57	20049	4	Bolt H 3/8-16 x 1 gr2
58	20307	2	1/2-13 Locknut
59	20028	7	Bolt H 5/16-18 x 1-1/4 Gr2
60	20420	2	Cotter Pin 1/4 x 2"
61	20355	2	Flatwasher 1/2
62	20027	4	Bolt H 5/16-18 x 1 Gr2
63	814000005	2	Pushbeam Spring
64	20305	4	3/8-16 Locknut
65	20406	2	Cotter Pin 3/16 x 1-1/2"
66	20309	2	LOCKNUT ESNA 5/8-11 ZINC PL
67	20329	1	Lockwasher 1/2"
68	20304	7	5/16-18 Locknut
69	20352	11	Flatwasher 5/16"
70	20150	2	Bolt H 5/8-11 X 4 1/2 Gr5 Zn

Parts indented are included in the carton, bag, or assembly under which they are indented.

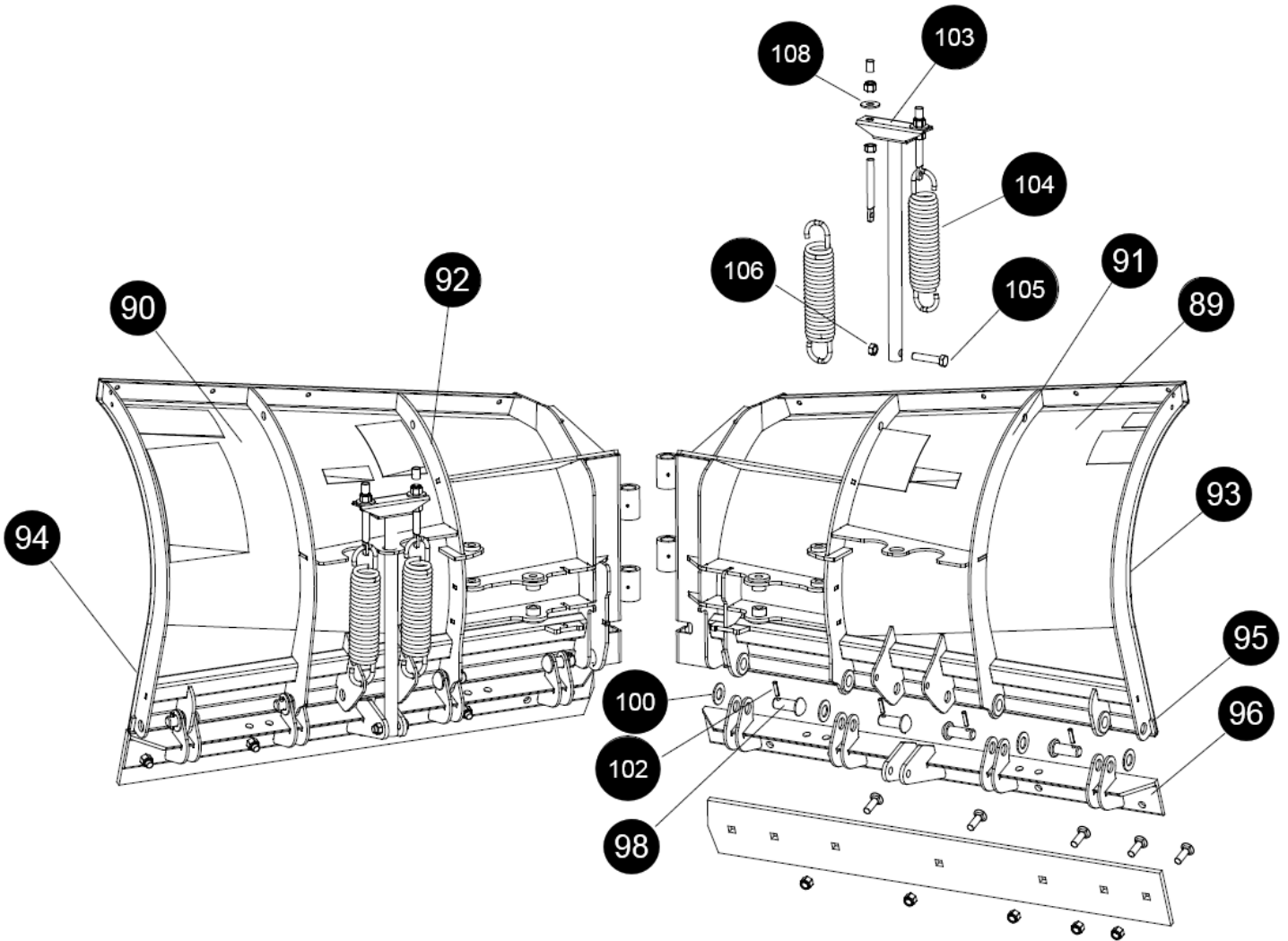
## Moldboard Parts List



Item	SV3LD	SV3 8'6"	SV3 9'6"	SV3 10'6"	QTY	Description
74	09536	09521	09522	09237	1	R.H. & L.H. Wing
75	09530	09518	09520	09508	1	• R.H. Wing
76	09531	09517	09519	09509	1	• L.H. Wing
77	14530	14170	14180	14151	2	•• Trip Edge Weld
78	22438	22438	22438	22438	8	•• 1" x 2-1/2" Pin
79	-----	-----	-----	22436	2	•• 1" x 3-3/8" Pin
80	21262	21262	21262	21262	8	•• Flatwasher 1"
81	22945	22945	22945	22945	8	•• Roll Pin 5/16" x 1.5"
82	84285	84285	84285	84285	2	•• T-Bar Weldment
83	07215	07215	07215	07215	4	•• Trip Spring
84	20145	20145	20145	20145	2	•• Bolt H 5/8-11 x 3" Gr. 5
85	20318	20318	20318	20318	2	•• Locknut 5/8-11
86	20357	20357	20357	20357	4	•• Flatwasher 5/8"
87	09124	09124	09124	09124	4	•• Eyebolt w/Locknuts and Cap

Parts indented are included in the assembly under which they are indented.

## Moldboard Parts List



Item	Stainless 8' 6"	Stainless 9' 6"	Stainless 10' 6"	QTY	Description
88	09533	09534	09535	1	R.H. & L.H. Wing pkg
89	09524	09526	09528	1	• SS R.H. Wing
90	09525	09527	09529	1	• SS L.H. Wing
91	14494	14496	14498	1	•• RH Moldboard Weld
92	14493	14495	14497	1	•• LH Moldboard Weld
93	14059	14063	14131	1	•• RH Stainless Steel Sheet
94	14060	14064	14132	1	•• LH Stainless Steel Sheet
95	14098	14118	14150	2	•• Bottom Mount Plate
96	14170	14180	14151	2	•• Trip Edge Weld
97	20307	20307	20307	10	•• Locknut 1/2-13
98	22438	22438	22438	8	•• 1" x 2-1/2" Pin
99	-----	-----	22436	2	•• 1" x 3-3/8" Pin
100	21262	21262	21262	8	•• Flatwasher 1"
101	21943	21943	21943	10	•• Bolt C 1/2-13 x 1-3/4"
102	22945	22945	22945	8	•• Roll Pin 5/16" x 1.5"
103	84285	84285	84285	2	•• T-Bar Weldment
104	07215	07215	07215	4	•• Trip Spring
105	20145	20145	20145	2	•• Bolt H 5/8-11 x 3" Gr. 5
106	20318	20318	20318	2	•• Locknut 5/8-11
107	20357	20357	20357	4	•• Flatwasher 5/8"
108	09124	09124	09124	4	•• Eyebolt w/Locknuts and Cap

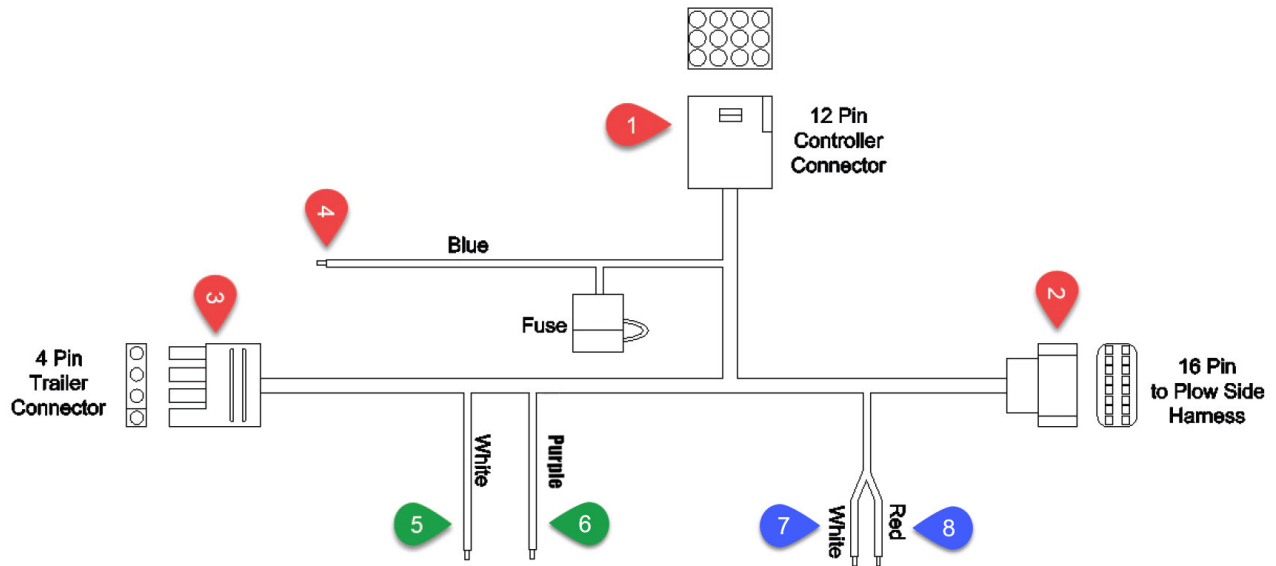
Parts indented are included in the assembly under which they are indented.

## Build Assembly

The SV3 plow comes fully assembled. The instructions below are provided for additional troubleshooting or component replacement.

1. Position wing assemblies face down on cardboard as not to damage the painted surfaces. Grease the bushings on both left and right wings. Position the wings so pivot bushings align. Note: Cutting Edges will be inline at this time.
2. Remove 1/2"-13 x 1" set screw located in top of A-Frame tower. Grease A-Frame bushings and Pivot Pin. With a helper, lift the A-Frame and insert its bushings in alignment with the wing bushings.
3. Insert Pivot Pin through bushings. Install and tighten 1/2" x 1.50" bolt and 1/2" lockwasher to top of A-Frame holding Pivot Pin in place. Note: Wipe off any excess grease at this time.
4. Using the A-Frame as leverage tilt the moldboard assembly raising the Cutting Edges off the ground. Support Cutting Edges 5 to 6 inches off the ground.
5. Install the Bottom Belt to left and right wing at Tripedge using 1/2" x 2.75" carriage bolt and locknut. Note: Be sure that Belt folds are upward and notches are toward the A-Frame. Assemble Backing Plate so bent end is facing the cutting edge forcing the belt against the Tripedge.
6. Using the A-Frame as leverage, tilt the moldboard assembly, raising the Cutting Edges off the supports. Remove supports and set moldboard assembly to the upright position.
7. Assemble Snow Deflector Brace to Pivot Pin. Place brace under the pivot pin plate. Attach using two 5/16" x 1-1/4" bolts, 5/16 washers and 5/16 locknuts.
8. Position moldboard assembly in the "Vee" position.
9. Assemble Top Snow Deflector positioning the deflector under deflector brace. Attach deflector ends under left and right wing gussets using 5/16" x 1-1/4" bolts, 5/16 locknuts and 5/16 washers. Tighten locknuts such that washers slightly compress the rubber surface. Note: Snow Deflector Belt should fold/loop downward between brace and each wing gusset when wings are not in the "Vee" position.
10. Assemble Lift Frame to A-frame using 1 x 3" Pin and 1/4 x 2" Cotter Pin.
11. Assemble Blue Handle Pin to lift frame by inserting the Blue Handle Pin through the outer lift frame plates, through the center of the spring. At this time align the small blue leg on the handle through the notch on the outermost plate. Compress the spring slightly with your fingers and insert the 3/16" x 1-1/2" Cotter Pin through the small hole towards the center of the pin. With cotter pin fully inserted, pull the blue handle until the spring is fully compressed and rotate the handle one full turn to bend the cotter pin in place. Realign the small blue leg with the notch on the outermost plate to lock in place. Repeat assembly process until both pins are assembled. Note: Lubricate the stainless steel pins and Lift Frame bearing surfaces with chassis grease or anti-seize lubricant periodically for easier disengagement of pins.
12. Assemble adjustable stacking stop bolts to lift frame using 5/8-11 x 3" bolts, lockwasher and jamnuts. Note: Adjustment must be made after moldboard assembly is installed. Adjustment bolts should make contact with the a-frame before any part of the A-Frame or moldboard come in contact with the lift arm and, or hydraulic unit while raising the snowplow or stacking snow. Moldboard should be checked in all positions.
13. Attach L.H. and R.H. Light Brackets to the side plates of Lift Frame in the upper two holes using 5/16"-18 x 1-1/4" bolts, 5/16" lockwashers, and 5/16"-18 hex nuts. Note: Light brackets may be adjusted down two levels in height for better appearance on lower profile vehicles. Tighten all fasteners to their proper torque.
14. Attach lift arm to lift frame using 5/8-11 x 5-1/2" bolt and 5/8-11 locknut.
15. Install the V70H Mounting Bracket to the Lift Frame and Light Bracket (Passenger Side) using 5/16-18 x 1-1/2" Bolts and 5/16-18 Locknuts. Install the V70H Lift Assembly to V70H Mounting Bracket Assembly using Bolt H 3/8-16 x 1-1/4" and 3/8 Lockwasher. Remove shipping plug on V70H Lift Assembly and install Breather.
16. Attach the Lift Cylinder to the Lift Frame using Bolt H 5/8-11 x 3-1/4" and 5/8-11 Locknut. Attach the Lift Cylinder to the Lift Arm using Bolt H 5/8-11 x 4-3/4" and 5/8-11 Locknut. Attach elbow to V70H Lift Assembly along with Hose and attach hose to Lift Cylinder using Straight Fitting.
17. Attach fixed end of Wing Cylinders to the A-Frame with a 5/8-11 x 5" bolt and 5/8-11 locknut on each side. Attach live end of Wing Cylinder rod to the Wings using a 5/8-11 x 5" bolt and 5/8-11 locknut on each side.
18. Attach Wing Cylinders hoses to the V70H Lift Assembly by removing the caps from the hoses and plugs from the V70H Lift Assembly. Install Straight Fittings to bottom of PA Block on V70H Hydraulic Unit and connect hoses. See below. Use zip ties to route hoses away from moving plow parts to prevent chaffing.
19. Connect Super V Plow Side Harness to V70H Hydraulic Unit as shown on the following page.

# Wiring Harnesses & Controller



## Vehicle Side Harness

- 1) Route the 12 pin connector into vehicle's cab and plug into controller.
- 2) Route the 16 pin connector to the front of the vehicle and plug into the plow side harness.
- 3) Route the 4 pin connector to rear of vehicle and plug into vehicle's trailer harness using the trailer adapter harness. Use cable ties to ensure the harness is secured to the vehicle's frame.



Trailer Adapter Harness

- 4) The BLUE wire will connect to the vehicle's keyed accessory circuit. This is to ensure the plow turns on and off with the vehicle's ignition.

*The following step is for 2015 & later GM vehicles with an alternator relay...*

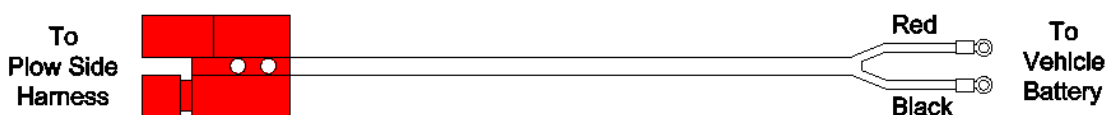
- 5) The WHITE wire will connect to 2015 & Later GM vehicles with alternator relay. See Meyer Products Service Bulletin SB252.
- 6) The PURPLE wire will connect to the black /violet wire of 2015 and later models of RAM 2500, 3500, 4500, and 5500 models. See mount instructions for further detail.

*The following two steps are optional and may be enforced by local law which requires your vehicle lights to be off while your plow lights are on and vice versa...*

- 6) Connect the RED to the HIGH beam function.
- 7) Connect the WHITE to the LOW beam function.

## Power Harness

- 1) Route through the vehicle's grille.
- 2) Connect the terminals to the vehicle's battery. Red to Positive and Black to Negative.



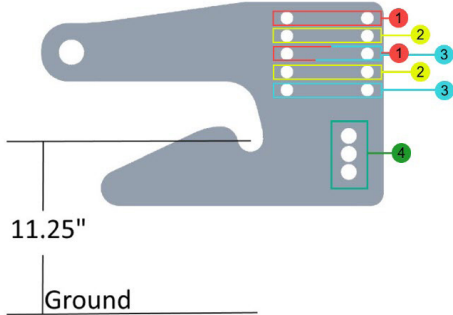
# Plow Assembly & Adjustments

## Adjustable Clevis

The 14700 adjustable clevis is now standard with all Standard Operating System black iron packages. The 14700 Adjustable Clevis cannot be used with any EZ+ Operating System plow model.

The 14700 Clevis offers 3 levels of adjustability for a height difference of +/- 1.5 inches. To use the adjustability feature, mounting the clevis using two sets of applicable holes. Use one of the bottom 3 holes to secure to the clevis to the mount.

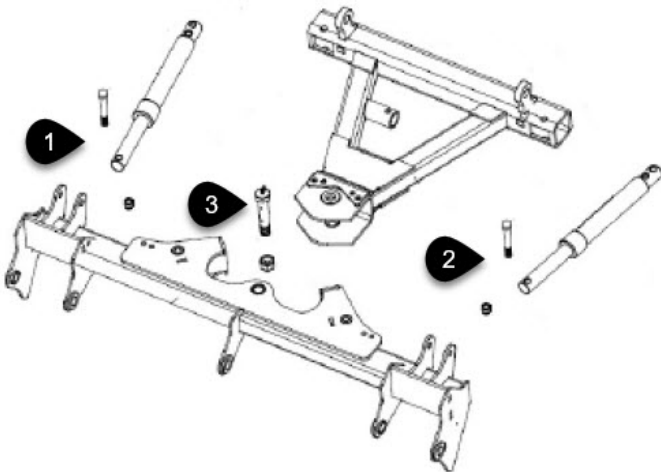
- Level 1 = Rows 1 and 3
- Level 2 = Rows 2 and 4
- Level 3 = Rows 3 and 5



The clevis requires a height of 11.25" off the ground in order for the plow to sit level.

## Pivot Bar

The Pivot Bar will need to be bolted to the A-Frame and Angling Cylinders. Cut any ties that are securing the cylinders to the crate prior to removing black iron from the crate. The Angling Cylinders will already be connected to the Lift Frame. Hardware to attach the Pivot Bar to the Angling Cylinders and A-Frame can be found in the Accessory Box.



## Nite Saber LED Lights

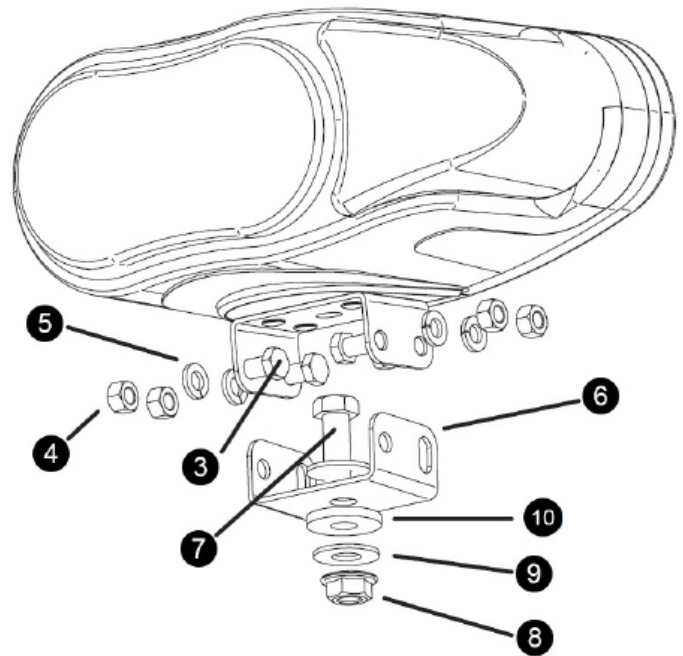
See separate Nite Saber LED instructions for further information.

Mount the lights as shown below.

Connect both male ends from the snow plow light to the female ends on the Plow Side Harness. Ensure all wiring harnesses are secured against the lift frame.

Check snow plow lights and blinkers to ensure proper operation. If operating in reverse (i.e. driver side blinking instead of passenger side), reverse the harness connections.

Note: All electrical connections should have both ends coated with a dielectric grease (Meyer Part # 15632) prior to final installation. This will ensure a good connection and help in preventing corrosion.



Nite Saber LED Parts List

Item	Part	QTY	Description
-	23067	1	Nite Saber LED Kit
-	23066	1	Passenger Side LED
-	23065	1	Driver Side LED
-	08126	1	Hardware Bag
3	----	8	• Hex Bolt 3/8" x 3/4", SS
4	----	8	• Hex Nut 3/8", SS
5	----	8	• Lock Washer 3/8", SS
6	----	2	• Metal Bracket, Bottom
7	----	2	• Bolt 1/2" - 13 x 1 1/12", SS
8	----	2	• Hex Lock Nut 1/2" - 13, SS
9	----	4	• Flat Washer 1/2", SS
10	----	2	• Neoprene Grommet 1/2"

# Plow Assembly & Adjustments

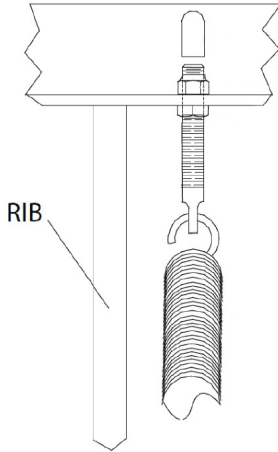
## Trip Spring Adjustment

Attach Eye Bolts to Moldboard and Trip Springs to Pivot Bar, making certain locknuts are positioned as shown below.

Make certain each Eye Bolt is in a vertical position as shown below so that the Eye Bolt and Trip Spring hinge properly when the Moldboard trips.

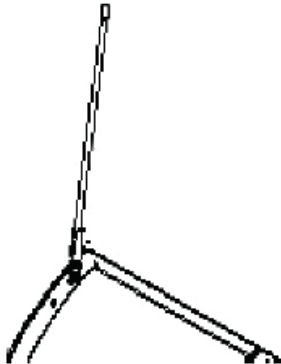
Note: Proper tension is attained when the Trip Spring coils just begin to separate and then tightening top locknut four additional turns. Tighten bottom locknut to secure Eye Bolt in position.

Install Eye Bolt Caps over exposed threads.



## Plow Markers

Attach Plow Markers to moldboard using 5/16-18 x 1" Bolt, 5/16" Flatwasher, and 5/16-18 Locknut.



## Lift Chains

Attach the Lift Chain to the Lift Arm through the two hooks on the lift arm. Adjust the lift chain at the lift arm so that there are 2-3 links of slack. This ensures that the plow blade will lift fully and be able to follow the ground contour while plowing.



## Hydraulic Fluid Level

Top off the unit to the fill line on the reservoir with Meyer M-1 Hydraulic Fluid.

NOTE: Proper fluid level is to the fill line on the reservoir for the E73. It must be checked with the lift cylinder fully retracted.



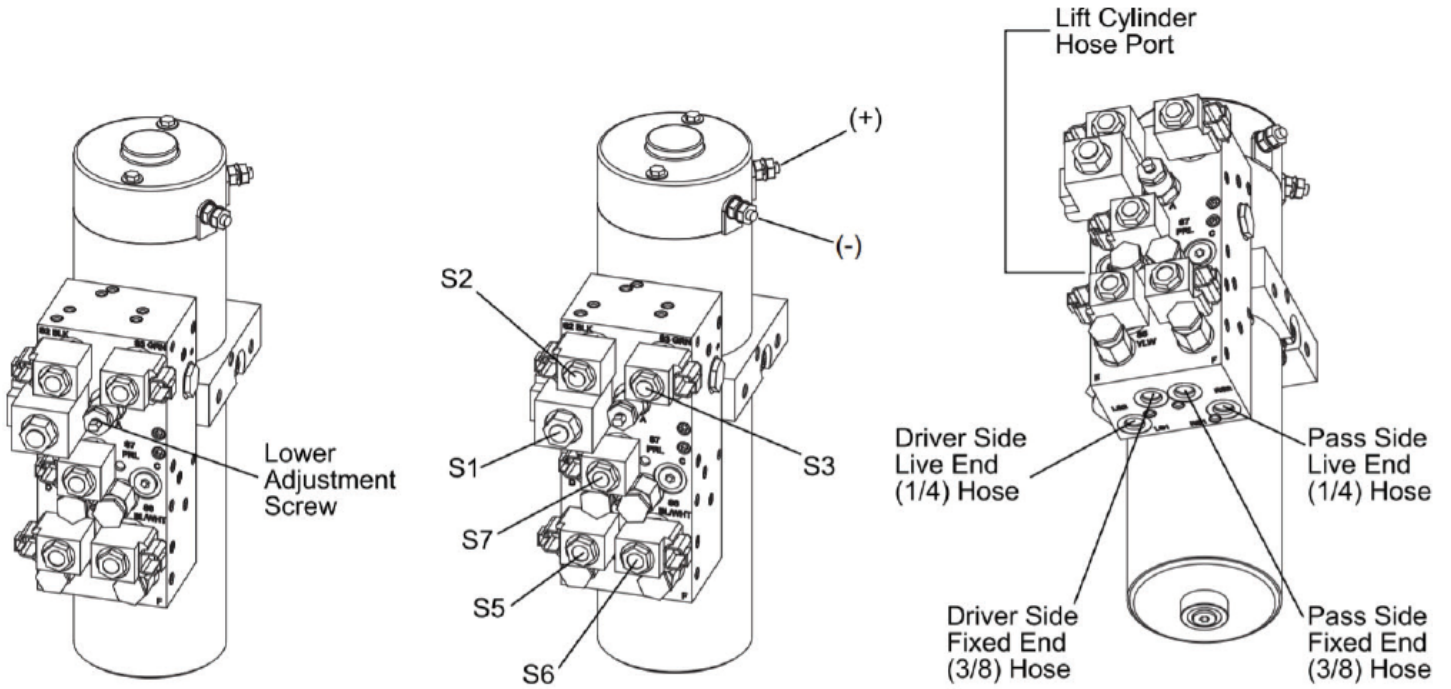
## Drop Speed Adjustment

E73 Drop Speed Adjustment: Loosen jam nut and turn knob clockwise to slow the drop of the plow and counter clockwise to speed the drop of the plow. Tighten jam nut.

Drop Speed Adjustment



# V70 Hydraulics

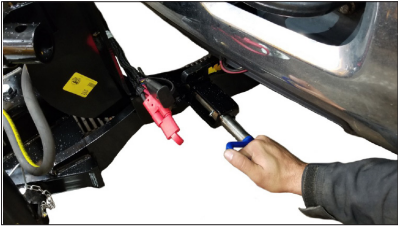


V-70	Raise	Lower	Right Retract	Right Extend	Left Retract	Left Extend	Angle Right	Angle Left	Vee	Scoop
Motor	X		X	X	X	X	X	X	X	X
S1	X	X								
S2	X	X							X	X
S3		X	X	X			X		X	X
S5						X				X
S6				X						X
S7			X		X				X	X

## SV3 - Mounting the Plow



1. Pull vehicle into plow assembly and push plow assembly forward an inch or two.



2. Twist handles on both sides to engage spring loaded pins.



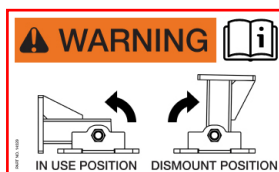
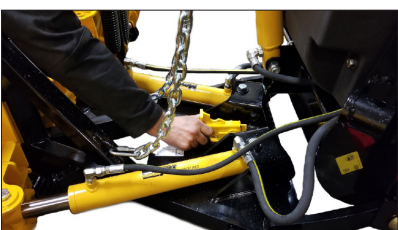
3. Push back on lift frame until both pins spring thru mount on vehicle.



4. Adjust crankstand until it is no longer in contact with the ground.



5. Ensure that the support kickstand is in the down position. Failure to do so will prevent the plow from lifting.



6. Remove crankstand from a-frame and attach to lift frame.

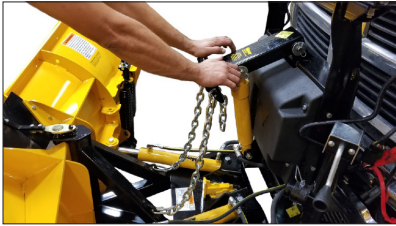


7. Remove the weather covers on the two plugs and plug the plow harnesses into the truck harnesses.

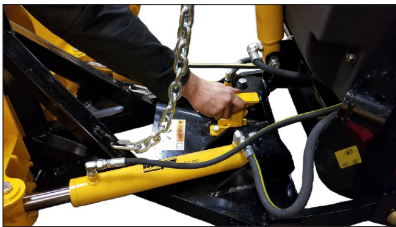
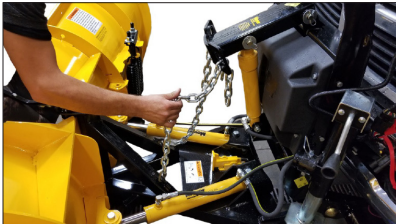
## SV3LD - Dismounting the Plow



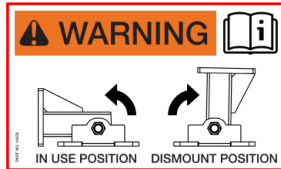
1. Press down button until float light turns blue.



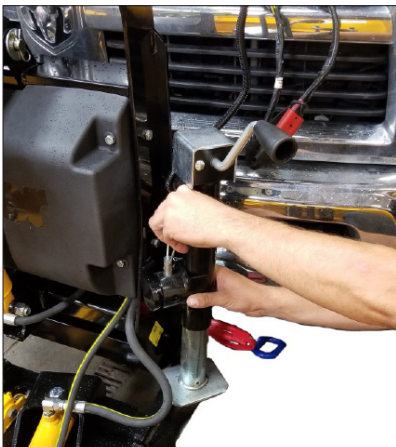
2. Push lift arm down until there is slack in the chain.



3. Ensure the support kickstand is in the upright position. Failure to do so will allow the lift frame to fall forward when dismounting.



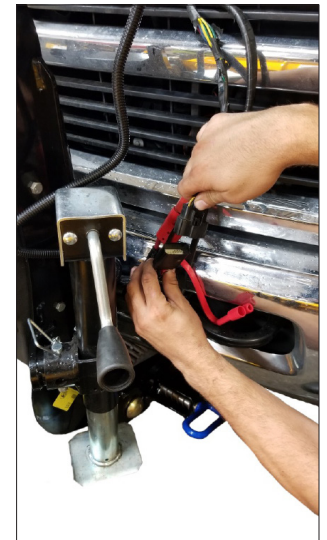
4. Remove crankstand from lift frame.



5. Attach crankstand to a-frame. Adjust crankstand until crankstand comes into contact with the ground and then turn 1 to 2 revolutions.



6. While slightly pushing the lift frame towards vehicle pull handles on either side to disengage pin then twist until the leg locks the pin in the open position.



7. Disconnect one piece electrical plug and install weather cover on male end.



8. Back vehicle away from plow assembly.

## PRE-DELIVERY INSPECTION

Vehicle Make: \_\_\_\_\_

Vehicle Model: \_\_\_\_\_

Vehicle Year: \_\_\_\_\_

Vehicle VIN#: \_\_\_\_\_

Vehicle FGAWR: \_\_\_\_\_

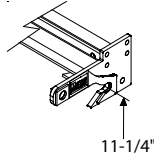
Installing Company: \_\_\_\_\_

Hydraulic Serial Number: \_\_\_\_\_

Moldboard Serial Number: \_\_\_\_\_

- All bolts torqued to specification
- Suspension interference
- Clevis height in inches \_\_\_\_\_
- Trip springs adjusted
- Lift Chain Adjusted
- Check for hydraulic fluid leaks
- Hydraulic fluid Level
- Dielectric grease applied to ALL electrical connection
- All wires secured
- Plow Stops Adjusted (plow cannot bump hyd. unit)
- Controller Operation

Clevis height



- Plow Operation Up
- Plow Operation Left
- Plow Operation Right
- Plow Operation Down
- Plow Light Blinker Left & Right Operation
- Plow Light Low & High Beam Operation
- Plow Lights Adjusted
- Plow Mount/Dismount reviewed with Customer
- Plow Operation reviewed with Customer
- Warranty/Registration/Owners Manual
- Reviewed with Customer

Notes:


Inspected By: \_\_\_\_\_ W.O.#: \_\_\_\_\_ Date: \_\_\_\_\_

Customer Signature: \_\_\_\_\_

### Serial Number Decal Locations

Moldboard serial tags are attached to the back of the moldboard, the outer rib of the moldboard, and on the black iron near the hydraulic unit.

Note: SV3 Plows use the same serial number for both hydraulic and moldboard.



### Registration

You must register your plow online to be eligible for the 5 year warranty. Please visit...

[www.meyerproducts.com/product-registration](http://www.meyerproducts.com/product-registration)

Please note your registration ID for future reference.

Registration ID \_\_\_\_\_