

EZ Build Assembly and Installation

41300 Lot Pro Plow with E-58H 12V Hydraulic Unit and
41350 Lot Pro Plow with E-72 12V Hydraulic Unit



Meyer Products LLC reserves the right, under its continuing product improvement program, to change construction or design details, specifications and prices without notice or without incurring any obligation.

© 2012 Printed in the U.S.A.



Meyer Products LLC
18513 Euclid Ave. • Cleveland, Ohio 44112-1084
Phone 216-486-1313
www.meyerproducts.com • email info@meyerproducts.com

Table of Contents

General Information.....	1
Illustrated Parts Lists.....	2-4
Attaching Plow to EZ Build Assembly.....	5
Vehicle Side Wiring Diagram.....	6-7
Drop Speed Adjustment.....	7
Stop Bolt Adjustment.....	7
Mount Plow System To Vehicle.....	8
Dis-Mount Plow System From Vehicle.....	9
Pre-Delivery Inspection.....	10
Accessories.....	11

Web Based Support

Service Manuals



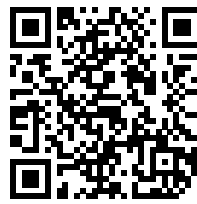
<http://www.meyerproducts.com/TechSupport/ServiceManualsandInstallationInstructions.aspx>

EZ-Troubleshooter



<http://www.meyerproducts.com/techsupport/EZtroubleshooter.aspx>

Owners Manual



<http://www.meyerproducts.com/TechSupport/OwnersManuals.aspx>

Mount/Dismount Videos



http://www.youtube.com/playlist?list=PLDE0602B305314D92&feature=edit_ok

Please visit our website to find our most updated technical information.

GENERAL INFORMATION

CAUTION Always disconnect battery prior to installation.

SAFETY PRECAUTIONS should be used when **Quik Lift®** is in a **RAISED** position.

LOWER plow to the ground when vehicle is **PARKED**.

OVERHAUL and **SERVICE** information is covered on separate instructions.

Tool list for Plow assembly:

Pliers	9/16" socket
1/2" socket	3/4" box wrench
1/2" box wrench	15/16" box wrench
9/16" box wrench	15/16" deep well socket

WARNING Lift arm should be removed from vehicle if / when snowplow is removed.

Note:

1. Connect ground cable to negative side of battery for a solid connection to ground.
2. **CAUTION** Route all cables away from moving engine parts, Manifolds, and sharp sheet metal.
3. For weather protection, coat all connections with Meyer Dielectric Grease Part No. 15632
4. The vehicle must be equipped with a "Heavy Duty Battery" (70 Amp, Hr. Min.), 550 C.C.A. and "Alternator" (60 Amp. Min.) to obtain maximum performance.
5. Follow these instructions explicitly. Warranty does not apply to a Meyer product which has been negligently or improperly assembled or installed.

ADDITIONAL BATTERY CONNECTIONS

1. When attaching cables to battery with side post terminals, use M.P. Adaptor Part #21976.
2. Coat battery connections with battery terminal coating.

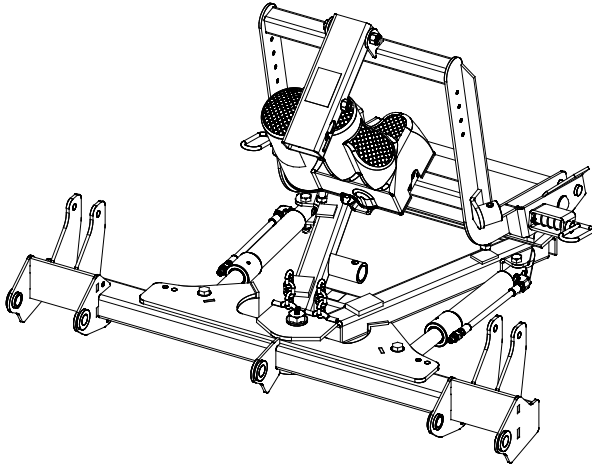
TORQUE CHART FOOT POUNDS

Bolt Nut Size	Gr. 2	Gr. 5	Gr. 8
1/4 - 20	4 - 5		
5/16 - 18	9 - 11		
3/8 - 16	17 - 20	26 - 29	
7/16 - 14		42 - 46	60 - 66
1/2 - 13		64 - 72	90 - 100
5/8 - 11		127 - 141	179 - 198

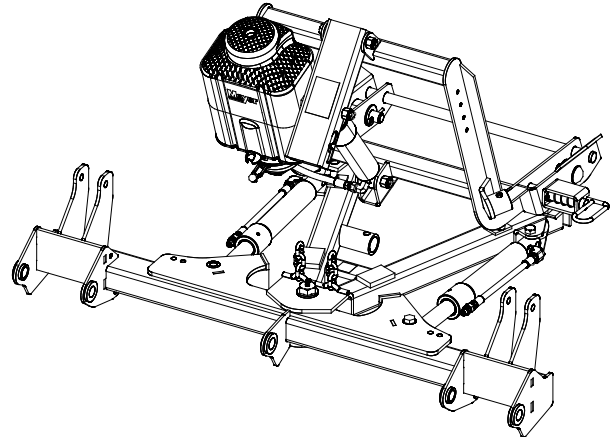
Please check the contents of your crate. Page 2 shows the assembled parts in the left hand column and the accessory box in the right hand column. Page 3 is the diagram for the left hand column of page 2.

Parts Diagram

41300 E-58H EZ Build



41350 E-72 EZ Build

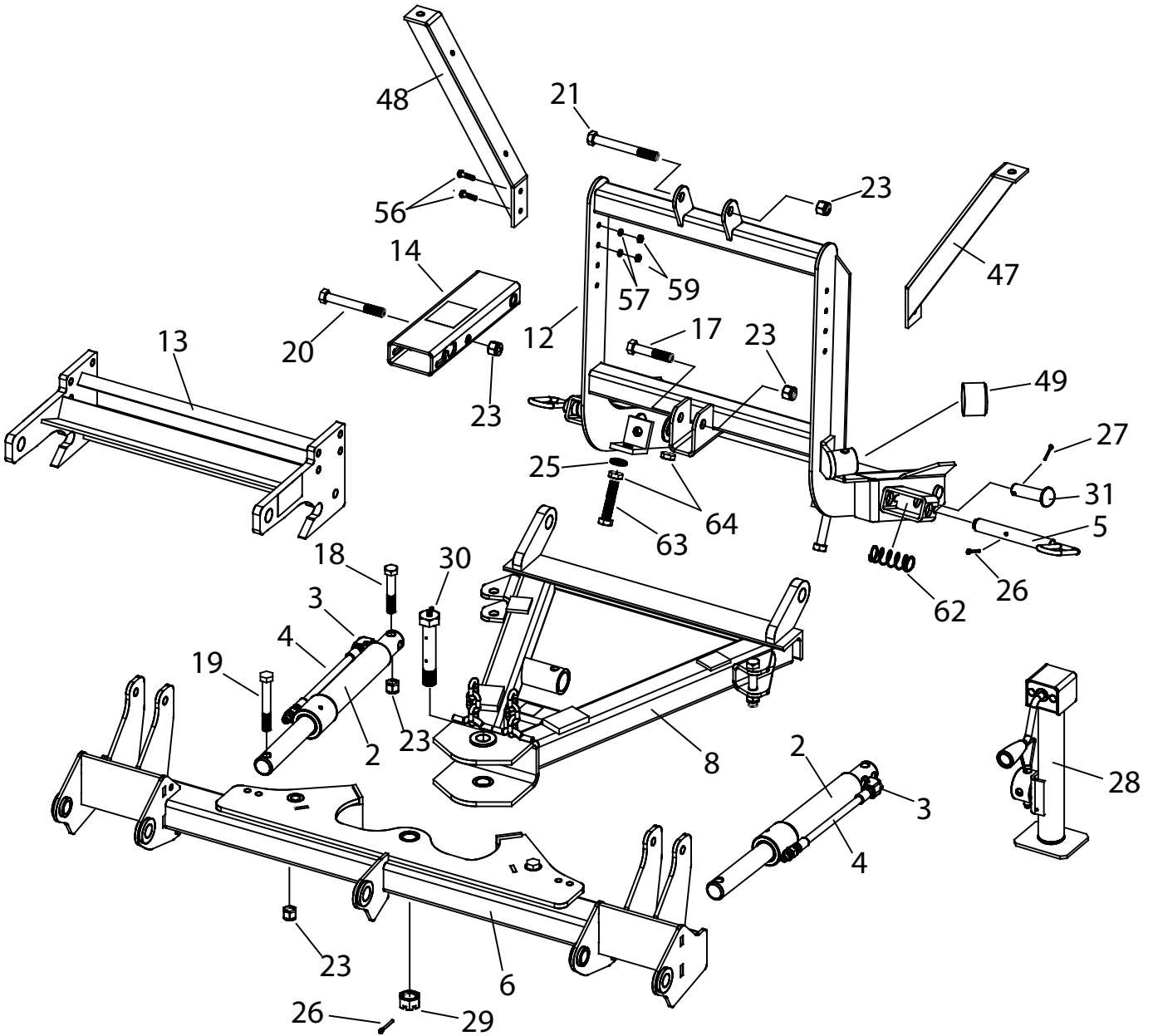
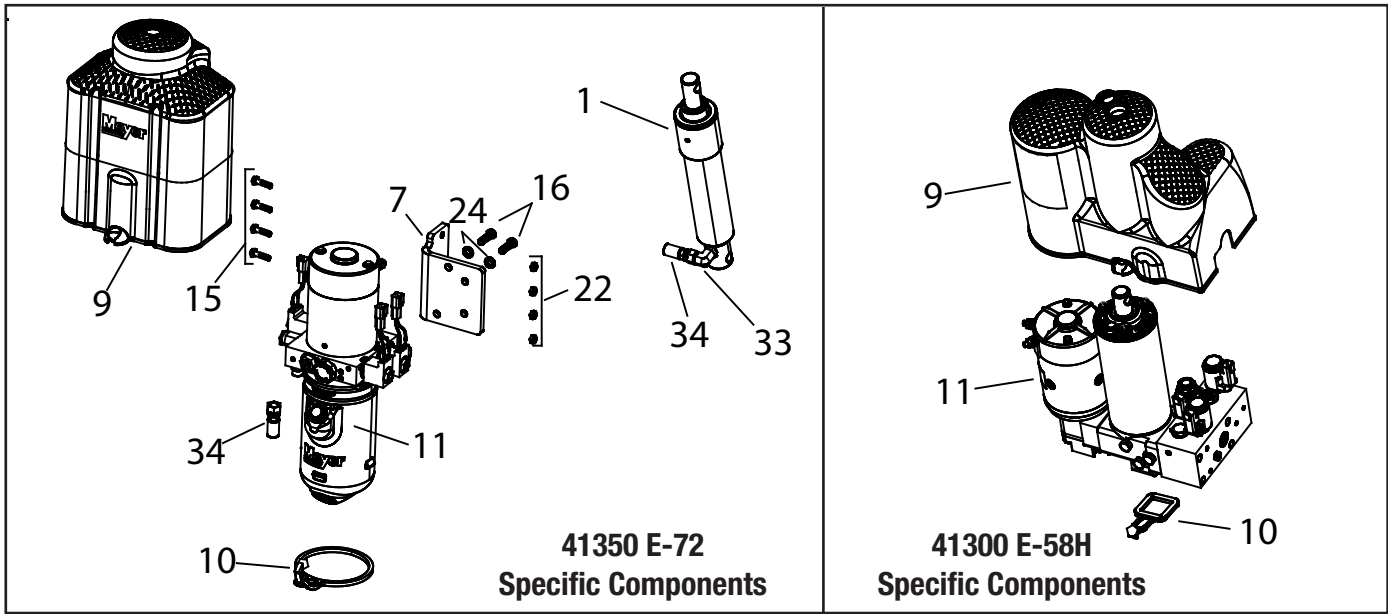


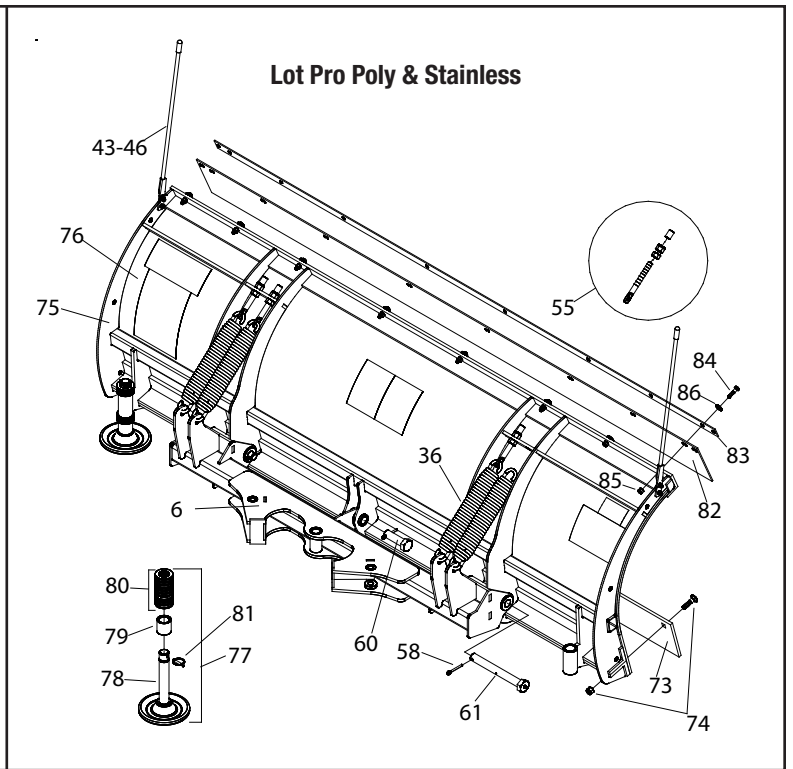
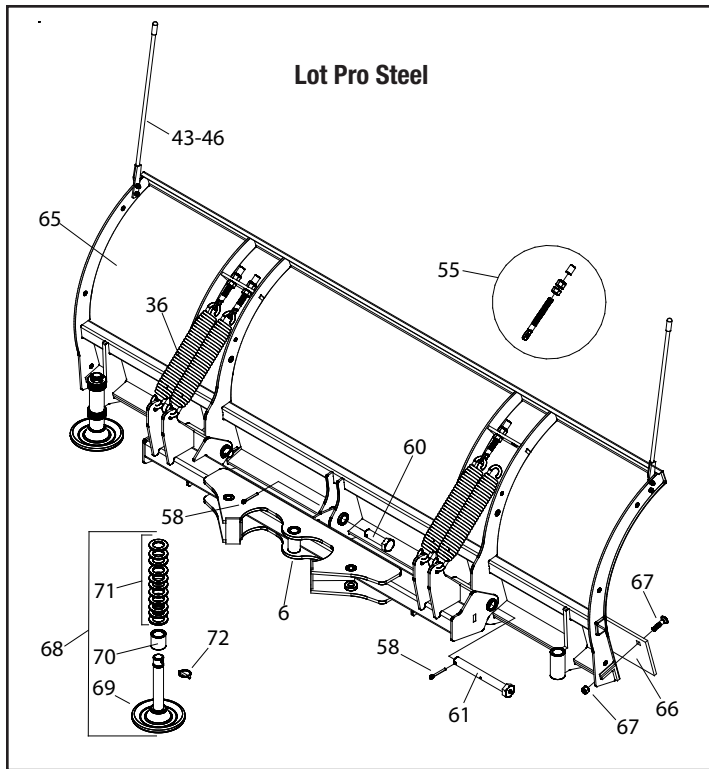
Parts List

Item	E-58H PKG Part No.	E-72 PKG Part No.	Qty.	Description	Item	E-58H & E-72 Part No.	Qty.	Description
	41300	41350	1	LP 7.5-9.0 E58H Plus Mount Assy.		41301	1	• Accessory Box
1	-----	05815	1	Lift Ram 1.75 x 8"	35	05024	1	•• Power Cable - 36"
	07620	-----	2	• Ram with Hose & Fittings	36	07017	4	•• Trip Spring
2	05877	-----	1	•• Ram (1-1/2" x 10")		07550	1	•• Nite Saber II Kit
3	22460	-----	1	•• SAE 6 x 90 Degree Elbow		08202	1	•• Plug Bracket Kit
4	22461	-----	1	•• Hose Assy 1/4 x 38" M-6	37	19607	1	••• Plug Bracket
	-----	07708	1	• L.H. Ram with Hose & Fittings	38	19609	1	••• Plate
2	-----	05877	1	•• Ram (1-1/2" x 10")	39	20027	2	••• Bolt H 5/16-18 x 1 Gr. 2
3	-----	22866	1	•• SAE Mx3/8 90 Degree Elbow	40	20326	4	••• Lockwasher 5/16
4	-----	22885	1	•• Hose 1/4 x 54"	41	20525	4	••• Finish Nut 5/16-18
	-----	07709	1	• R.H. Ram with Hose & Fittings	42	22658	2	••• Bolt H 5/16-18 x 3 Gr. 2
	-----	05877	1	•• Ram (1-1/2" x 10")		09917	1	•• Plow Marker Kit
3	-----	22866	1	•• SAE Mx3/8 90 Degree Elbow	43	08214	2	••• Plow Marker
4	-----	22884	1	•• Hose 1/4 x 33"	44	20027	4	••• Bolt H 5/16-18 x 1 Gr. 2
5	11859	11859	2	• Blue Handle Pin	45	20304	4	••• Locknut 5/16-18
6	12750	12750	1	• Pivot Bar Lot Pro	46	20352	8	••• Flatwasher 5/16"
7	-----	13333	1	• E-72 Mounting Bracket	47	11751	1	•• Light Bracket LH
8	13500	13500	1	• A-Frame Lot Pro Plus	48	11752	1	•• Light Bracket RH
9	15630	15645	1	• Lift Unit Cover	49	11844	1	•• Receiver Tube Cap
10	15631	15634	1	• Cover Strap	50	15370	1	•• Starter Solenoid - 12 volt
11	15995	16006	1	• Lift Ass'y. (Unit only)		15787	1	•• Hardware Bag
12	19365	19365	1	• Lift Frame	51	21398	2	••• S. Tap Screw 1/4 - 14 x 3/4"
13	19370	19370	1	• Clevis	52	21832	1	••• Split Bushing
14	19592	19592	1	• Lift Arm	53	22690X	1	•• Pistol Grip Controller
15	-----	20029	4	• Bolt H 5/16-18 x 1-1/2" Gr. 2	54	22691	1	•• Universal Truck Side Harness
16	-----	20049	2	• Bolt H 3/8-16 x 1" Gr. 2		41302	1	•• Hardware Bag
17	20146	20146	1	• Bolt H 5/8 - 11 x 3-1/4" Gr. 5	55	09124	4	••• Eye Bolt
18	20147	20147	2	• Bolt H 5/8 - 11 x 3-1/2" Gr. 5	56	20028	4	••• Bolt H 5/16-18 x 1-1/4 Gr. 2
19	20150	20150	2	• Bolt H 5/8 - 11 x 4-1/2" Gr. 5	57	20326	4	••• Lockwasher 5/16"
20	20152	20152	1	• Bolt H 5/8 - 11 x 5" Gr. 5	58	20406	3	••• Cotter Pin 3/16 x 1-1/2"
21	20153	20153	1	• Bolt H 5/8 - 11 x 5-1/2" Gr. 5	59	20525	4	••• Finish Nut 5/16-18
22	-----	20304	4	• Locknut 5/16-18	60	22331	1	••• Hex Head Pin 1 x 3-5/16"
23	20309	20309	7	• Locknut 5/8-11	61	22375	2	••• Pivot Pin 1 x 8-3/4"
24	-----	20327	2	• Lockwasher 3/8"	62	814000005	2	• Spring
25	20331	20331	2	• Lockwasher 5/8"	63	8500003307001	2	• Bolt H 5/8-11 x 3 Full Thread
26	20406	20406	3	• Cotter Pin 3/16 x 1-1/2"	64	8501003013	4	• 5/8-11 Jam Nut
27	20420	20420	2	• Cotter Pin 1/4 x 2"				
28	22245	22245	1	• Crank Stand				
29	22274	22274	1	• Slotted Nut 1-8				
30	22398	22398	1	• King Bolt 1-8 x 5-1/2"				
31	22436	22436	2	• Pin 1 x 3"				
32	22692	22692	1	• Plow Side Harness				
33	-----	22866	1	• SAE Mx3/8 90 Degree Elbow				
34	-----	22883	1	• Hose 1/4 x 22"				

Parts indented are included in the carton, bag or assembly under which they are indented.

41300 E-58H and 41350 E-72 Assembly





Lot Pro Steel Parts List

Item	LP - 7.5	LP - 8.0	LP - 8.5	LP - 9.0	Qty	Description
65	09400	09401	09402	09403	1	Moldboard Assembly
66	09797	09133	09134	07259	1	• Cutting Edge
67	08486	-----	-----	-----	1	• Bolt C 1/2-13 x 1-3/4 & Locknut (Kit of 9 each)
67	-----	08692	08692	-----	1	• Bolt C 1/2-13 x 2 & Locknut (Kit of 10 each)
67	-----	-----	-----	08318	1	• Bolt C 5/8-11 x 2-1/4 & Locknut (Kit of 12 each)
68	09362	09362	09362	09362	2	• Mushroom Shoe Casting Assy.
69	12394	12394	12394	12394	1	•• Runner Shoe Casting
70	12449	12449	12449	12449	1	•• Runner Spacer
71	20363	20363	20363	20363	11	•• Flatwasher 1-1/4
72	22083	22083	22083	22083	1	•• Linch Pin

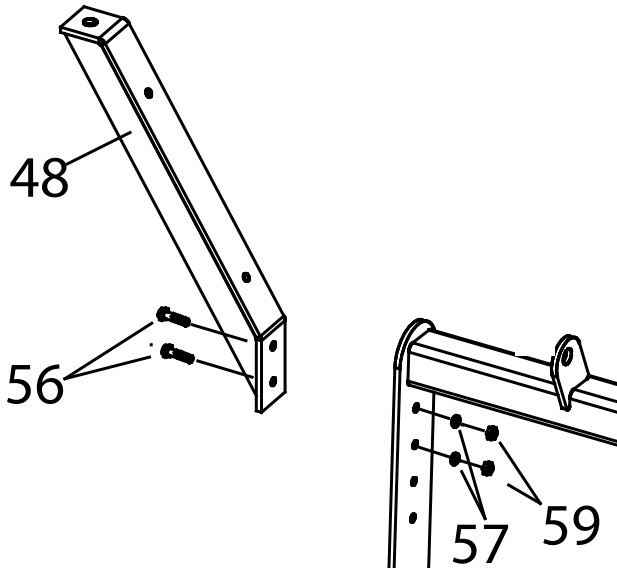
Lot Pro Poly & Stainless Parts List

Item	LPP - 7.5	LPP - 8.0	LPP - 8.5	LPP - 9.0	LPS - 8.0	LPS - 9.0	Qty	Description
	09404	09405	09406	09407	09410	09411	1	Moldboard Assembly
73	09797	09133	09134	07259	09133	07259	1	• Cutting Edge
74	08692	08692	08692	-----	08692	-----	1	• Bolt C 1/2-13 x 2 & Locknut (Kit of 10 each)
74	-----	-----	-----	08318	-----	08318	1	• Bolt C 5/8-11 x 2-1/4 & Locknut (Kit of 12 each)
75	12810	12811	12812	12813	12811	12813	1	• Moldboard Frame Weldment
76	12809	12814	12815	12818	-----	-----	1	• Plastic Sheet
76	-----	-----	-----	-----	13179	13180	1	• Stainless Steel Sheet (304)
77	09362	09362	09362	09362	09362	09362	2	• Mushroom Shoe Casting Assy.
78	12394	12394	12394	12394	12394	12394	1	•• Runner Shoe Casting
79	12449	12449	12449	12449	12449	12449	1	•• Runner Spacer
80	20363	20363	20363	20363	20363	20363	11	•• Flatwasher 1-1/4
81	22083	22083	22083	22083	22083	22083	1	•• Linch Pin
82	12073	12009	12014	12118	12009	12118	1	• Deflector
83	12487	12497	12498	12031	12497	12031	1	• Re-Inforcement Bar
84	20051	-----	-----	-----	-----	-----	8	• Bolt H 3/8-16x1-1/2"
84	-----	20051	20051	20051	20051	20051	10	• Bolt H 3/8-16x1-1/2"
85	20305	-----	-----	-----	-----	-----	8	• Locknut 3/8-16
85	-----	20305	20305	20305	20305	20305	10	• Locknut 3/8-16
86	20353	-----	-----	-----	-----	-----	8	• Flatwasher 3/8"
86	-----	20353	20353	20353	20353	20353	10	• Flatwasher 3/8"

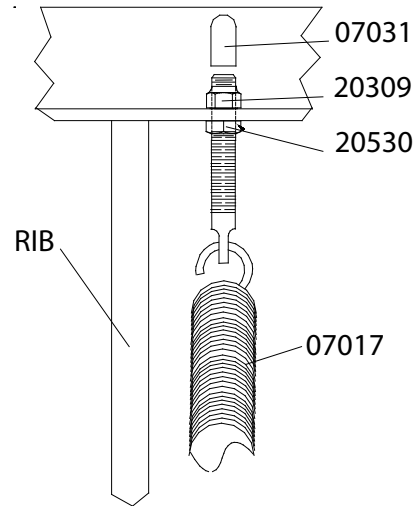
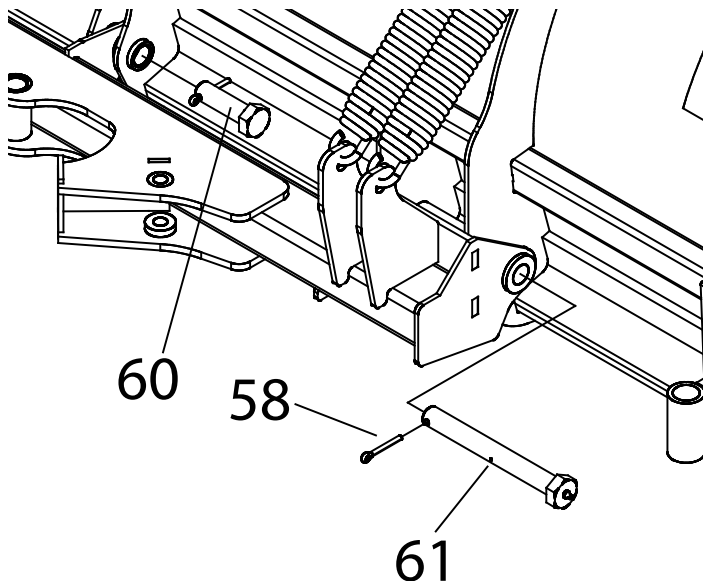
Parts indented are included in the assembly under which they are indented.

Attaching Plow to EZ Build Assembly

- A. Attach L.H. and R.H. Light Brackets (47 & 48) to the side plates of Lift Frame (12) in the upper two holes using 5/16"-18 x 1-1/4" bolts (56), 5/16" lockwashers (57), and 5/16"-18 hex nuts (59). **Note:** Light brackets may be adjusted down two levels in height for better appearance on lower profile vehicles. Tighten all fasteners to their proper torque.



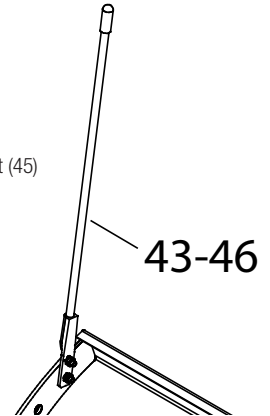
- B. Liberally coat Pivot Pins (60 & 61) with Coolube Multi-Purpose Premium Grease Part No. 15181.
- C. Attach Pivot Bar (6) to Moldboard with Pivot Pins (60 & 61) (grease fitting facing outward) and insert Cotter Pins (58). Grease outer Pivot Pin's (52) using grease fitting.



- D. Attach Eye Bolts (55) to Moldboard and Trip Springs (36) to Pivot Bar (6), making certain locknuts are positioned as shown below.
- E. Make certain each Eye Bolt (55) is in a vertical position as shown below so that the Eye Bolt (55) and Trip Spring (36) hinge properly when moldboard trips.

Note: Proper tension is attained when Trip Spring (36) coils just begin to separate and then tightening top locknut four additional turns. Tighten bottom Locknut (20530) to secure Eyebolt in position. Install Eyebolt caps (07031) over exposed threads.

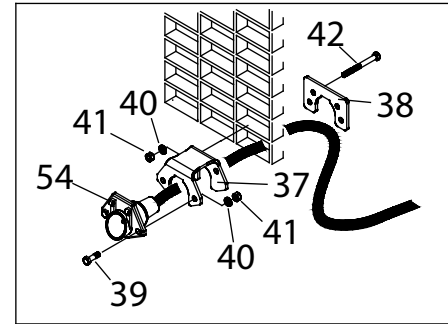
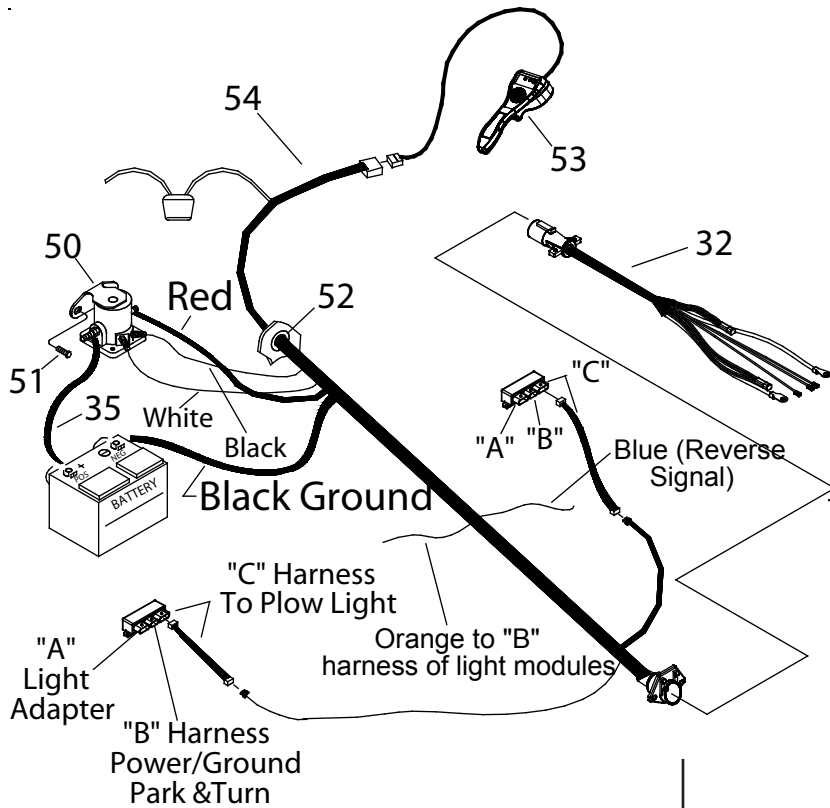
- F. Attach Plow Markers (43) to moldboard using 5/16-18 x 1" Bolt (44), 5/16" Flatwasher (46) and 5/16-18 Locknut (45)



- G. Attach the Lift Chain to the Lift Arm (14) through the two hooks on the lift arm. Adjust the lift chain at the lift arm so that there are 2-3 links of slack. This ensures that the plow blade will lift fully and be able to follow the ground contour while plowing.



Vehicle Side Wiring Diagram



Hydraulic Solenoid Color Code:

OPERATION - SOLENOID COMBINATION

RAISE - Motor Solenoid + "B" Solenoid

LOWER - "A" Solenoid Only

LEFT ANGLE - Motor Solenoid Only

RIGHT ANGLE - Motor Solenoid + "C" Solenoid

COIL COLOR CODE

MOTOR SOLENOID - WHITE WIRE

"A" - BLACK WIRE

"B" - RED WIRE

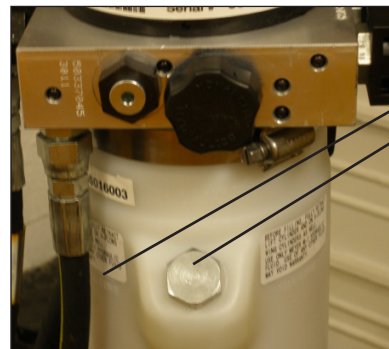
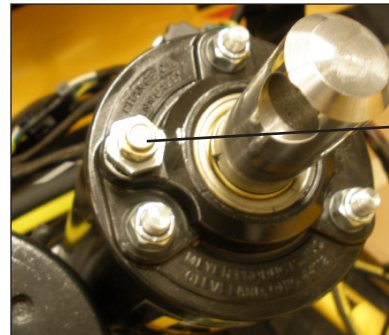
"C" - GREEN WIRE

GROUND WIRE EACH COIL BLACK W/WHITE STRIPE

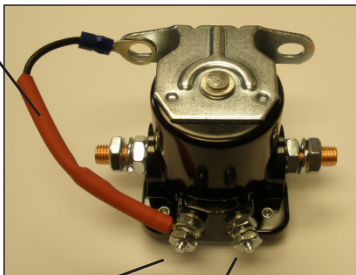
- H. Run Universal Truck Side Harness (54) through a hole in grille and into the engine compartment. Sandwich vehicle grill between Plug Bracket (37) and Plate (38) using Bolt H 5/16-18 x 3" (42), 5/16 Lockwasher (40) and 5/16-18 Finish nut (41). Secure Universal Truck Side Harness (54) to Plug Bracket (37) using Bolt H 5/16-18 x 1" (39), 5/16 Lockwasher (40) and 5/16-18 Finish nut (41).

CAUTION Secure Universal Truck Side Harness (54) from any hot / moving parts with tie wraps as needed.

- I. Drill a 1-1/4" Diameter Hole thru firewall to install split bushing (52) and extend the harness into the cab of the vehicle. Fused lead from Universal Truck Side Harness (54) must be attached to terminal in fuse panel that is activated only when the ignition key is "on."
- J. Install Motor Solenoid (50) to metal surface in engine compartment using Self Tapping Screws (51). (Solenoid must be grounded to operate). Attach Red Power Cable (54) to a large terminal on Motor Solenoid (50). Attach Black Ground Cable (54) to negative (-) terminal of battery. Attach Red Power Cable (35) to positive (+) terminal of battery and remaining large terminal on Motor Solenoid (50). Attach small white wire from harness (54) to small terminal (S) on Motor Solenoid (50). Attach small Black/white stripe wire from harness (54) to small terminal (I)(ground) on Motor Solenoid (50). Attach Blue wire to a reverse signal on the vehicle. The blue wire is sensing when the vehicle is in reverse in order to operate HFP (Hands Free Plowing).



15059 Diode packed in Controller box



(S) terminal white wire
(I) terminal black wire w/white stripe

- K. Meyer M-1 Hydraulic Fluid Part No. 15134 may need to be added to reservoir and bleed the Angle Cylinders, proceed as follows:
- Remove Fill Plug from reservoir to add fluid during charging.
 - Operate the Angle cylinders (2) until they are filled with Meyer M-1 Hydraulic Fluid and are not spongy.
- c. Top off the unit to the fill line on the reservoir with Meyer M-1 Hydraulic Fluid.

NOTE: Proper fluid level is to the fill line on the reservoir for the E-72 or 1" below the fill plug on the E-58H . It must be checked with the lift cylinder fully retracted.

For snow plow light installation see separate instructions.

Orange wire on Harness (54) will attach to both orange wires of the "B" harness supplied in the Light Module Kit. Reference Form 1-757

Route Cables "C" (Yellow) from module to Harness (54). Connect both "C" Harness female ends to the male corresponding ends of the Harness (54).

Connect both male ends from the snow plow light to the female ends on the Plow Side Harness (32).

Check snow plow light blinkers to make sure the wires have not been reversed.

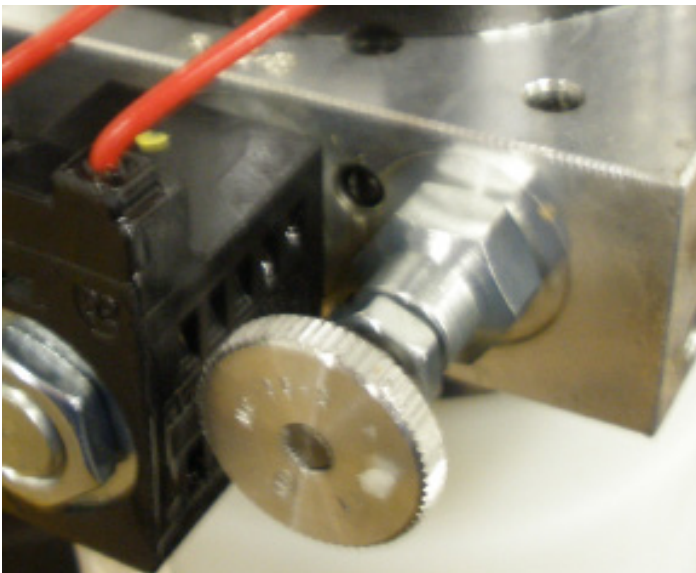
Note: All electrical connections should have both ends coated with a dielectric grease, Meyer Part No. 15632, prior to final installation. This will ensure a good connection and help in preventing corrosion.

- L. Refer to Operation and Maintenance Manual for complete controller operation.
- M. After all electrical connections have been made the drop speed of the plow may be evaluated / adjusted. To adjust, loosen the hex nut and adjust in to slow the drop speed and out to make it faster. After ideal drop speed is achieved, retighten the hex nut. See below.

After cycling of the plow, recheck oil level.



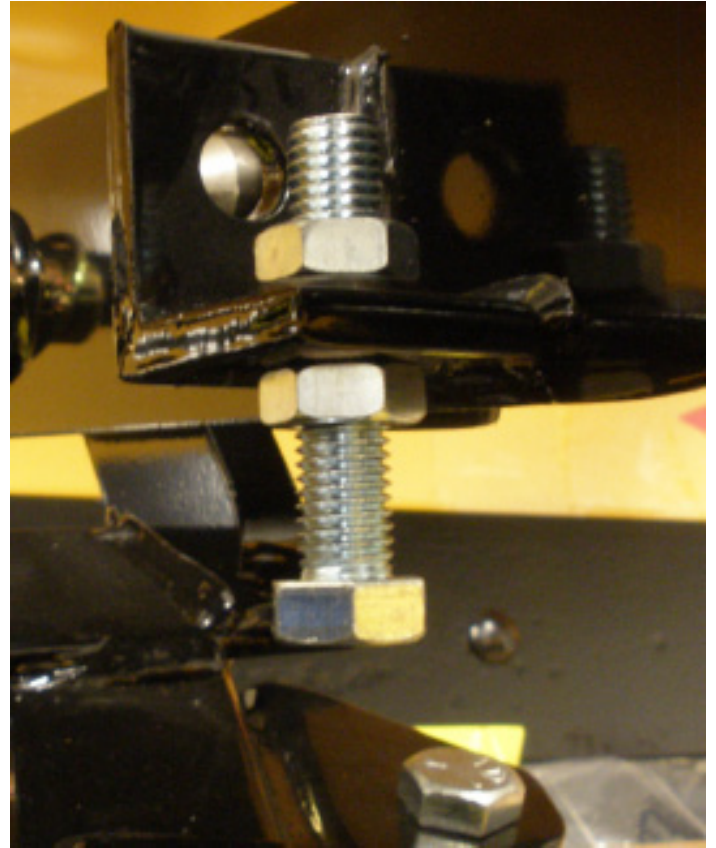
E-58H Lower Adjustment (left side of vehicle):
Loosen jam nut and turn screw clockwise to slow the drop of the plow and counter clockwise to speed the drop of the plow. Tighten jam nut.



E-72 Lower Adjustment (left side of hydraulic unit):
Loosen jam nut and turn knob clockwise to slow the drop of the plow and counter clockwise to speed the drop of the plow. Tighten jam nut.

- N. Assemble adjustable stacking stop bolts to lift frame (12) using 5/8-11 x 3" bolts (63), lockwasher (25) and jamnuts (64). See below.

Note: Adjustment must be made after moldboard assembly is installed. Adjustment bolts (63) should make contact with the a-frame before any part of the A-Frame/Sector or moldboard come in contact with the lift arm and, or hydraulic unit while raising the snowplow or stacking snow. Moldboard should be checked in all positions.



Mount Plow To Vehicle



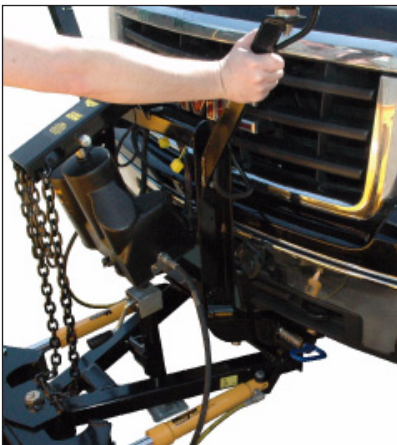
For Mounting and Dis-mounting instructional video's please visit www.youtube.com/meyerproducts



A. Pull vehicle into plow assembly and push plow assembly forward an inch or two.



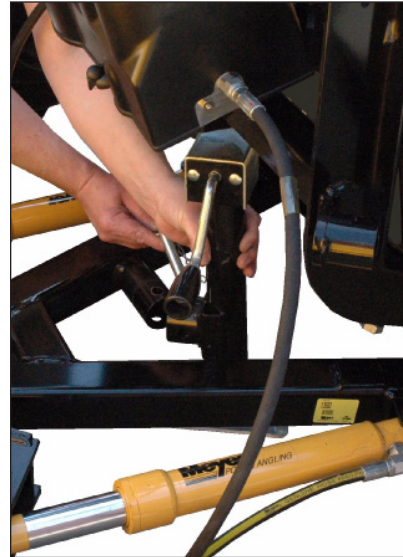
B. Twist handles on both sides to engage spring loaded pins.



C. Push back on lift frame until both pins spring thru mount on vehicle.



D. Adjust crankstand until it is no longer in contact with the ground.



E. Remove crankstand from a-frame.



F. Attach crankstand to lift frame.



G. Remove weather cover on male end and connect one piece electrical plug. The spring loaded cover will lock one piece plug.

Meyer Products assumes no responsibility for installations not made in accordance with these instructions.

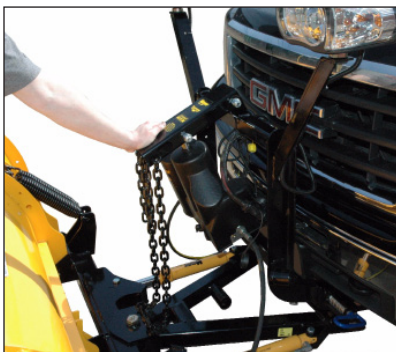
Dis-Mount Plow From Vehicle



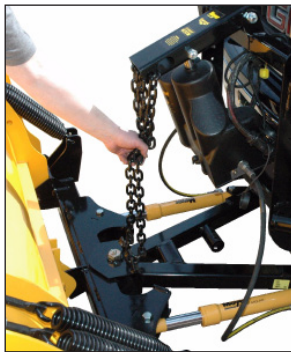
For Mounting and Dis-mounting instructional video's please visit www.youtube.com/meyerproducts



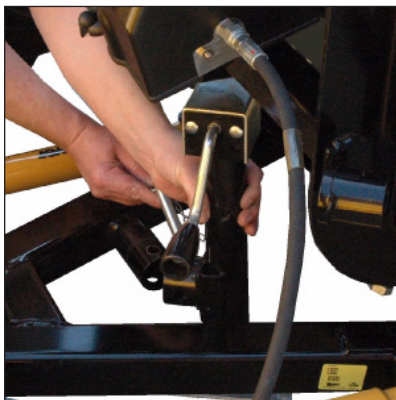
A. Press down button until float light turns blue.



B. Push lift arm down until there is slack in the chain.



C. Remove crankstand from lift frame.



D. Attach crankstand to a-frame



E. Adjust crankstand until crankstand comes into contact with the ground and then turn 1 to 2 revolutions.



F. While slightly pushing the lift frame towards vehicle pull handles on either side to disengage pins then twist until the leg locks the pin in the open position.



G. Disconnect one piece electrical plug and install weather cover on male end.



H. Back vehicle away from plow assembly.

Meyer Products assumes no responsibility for installations not made in accordance with these instructions.



PRE-DELIVERY INSPECTION

Vehicle Make: _____

Vehicle Model: _____

Vehicle Year: _____

Vehicle VIN#: _____

Vehicle FGAWR: _____

Installing Company: _____

Mounting Type:

EZ Plus

Plow Type:

7.5

8.0

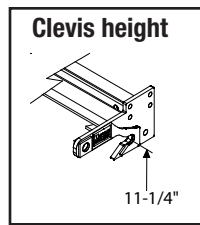
8.5

9.0

Hydraulic Serial Number: _____

Moldboard Serial Number: _____

- All bolts torqued to specification
- Suspension interference
- Clevis height in inches _____
- Diode Installed
- Trip springs adjusted
- Lift Chain Adjusted
- Check for hydraulic fluid leaks
- Hydraulic fluid Level
- Dielectric grease applied to ALL electrical connection
- All wires/modules secured
- Plow Stops Adjusted (plow cannot bump hyd. unit)
- Controller Operation
- Controller Turns Off when vehicle shut off



- Plow Operation Up
- Plow Operation Left
- Plow Operation Right
- Plow Operation Down
- Plow Drop Speed Adjusted
- Plow Light Blinker Left & Right Operation
- Plow Light Low & High Beam Operation
- Plow Lights Adjusted
- Plow Mount/Dismount reviewed with Customer
- Plow Operation reviewed with Customer
- HFP (Hands Free Plowing) reviewed with Customer
- Warranty/Registration/Owners Manual reviewed with Customer

Comments:

Inspected By: _____ W.O.# _____ Date: _____

Customer Signature: _____

Please see your owner's manual for Pre-Season, Post-Season and general maintenance.

Serial Number Decal Locations

E-58H unit serial number is attached to the cover.



E-72 unit serial number is under the cover attached to the hydraulic unit.



Moldboard serial number is attached to the back of the moldboard.



Lot Pro Moldboard Accessories

PART NO.	DESCRIPTION	CUTTING EDGE KITS			DEFLECTOR KITS			CURB GUARDS	ADJ. WINGS	BOX WINGS	FIXED WINGS	TRIP-DAMPENING COMPLETE KIT
		Steel	Rubber	Urethane	Molded	Rubber	Poly					
09400	LP 7.5 STEEL	08178*	08189	08119	12039	08109	12078	08340	08105	08104	08110	08243
09401	LP 8.0 STEEL	08180*	08190	08160	12040	08111	12024	08344	08105	08104	08110	08243
09402	LP 8.5 STEEL	08182*	08191	081621	2041	08112	12025	08344	08105	08104	08110	08243
09403	LP 9.0 STEEL	08185*	08192	08164	12042	08113	12123	08344	08105	08104	08110	08243
09404	LPP 7.5 POLY	08178*	08189	08119	12039	08109	12078*	08344	08115	08104	08110	08243
09405	LPP 8.0 POLY	08180*	08190	08160	12040	08111	12024*	08344	08115	08104	08110	08243
09410	LPS 8.0 STEEL	08180*	08190	08160	12040	08111	12024*	08344	08115	08104	08110	08243
09406	LPP 8.5 POLY	08182*	08191	08162	12041	08112	12025*	08344	08115	08104	08110	08243
09407	LPP 9.0 POLY	08185*	08192	08164	12042	08113	12123*	08344	08115	08104	08110	08243
09411	LPS 9.0 STEEL	08185*	08192	08164	12042	08113	12123*	08344	08115	08104	08110	08243

*Included with moldboard

Controllers and Controller Accessories



22790X
Joy Stick



22690X
Pistol Grip
(Standard)



22695X
Pistol Grip DLX



22154
Touch Pad
(Need 07691 Adapter)



22799
Joy Stick
Cradle Mount



22798
Pistol Grip
Cradle Mount



22815
45-Degree
Cradle Adapter



22801 (10")
22844 (20")
Floor Mount

Mounting Accessories

16529
Meyer
Winch Cradle



08300 Brush Guard



Optional Light Guards
16536 ('99-07 Ford)
16537 ('99 + Chevy)
16539 ('99 + Dodge)

Meyer Products LLC
18513 Euclid Ave. • Cleveland, Ohio 44112-1084
Phone 216-486-1313
www.meyerproducts.com • email info@meyerproducts.com