



PARTS & INSTALLATION INSTRUCTIONS V-71 QUIK LIFT®

PART LIST

| Item | Part No. | Qty. | Description |
|------|----------|------|---|
| | 15130 | 1 | V-71 Lift and P.A. Ass'y. (Complete) 12 volt |
| 1 | 15132 | 1 | • V-71 Lift Ass'y. (Unit only) 12 volt |
| 2 | 15633 | 1 | •• Cover |
| 3 | 05815 | 1 | • Lift Cylinder 1.75 x 8" SAE-6 |
| 4 | 22883 | 1 | • Hose 1/4 x 22" SAE 6 |
| | 07713 | 2 | • Double Acting Wing Ram with Fittings & Hoses |
| 5 | 05756 | 2 | •• Double Acting Ram 1.25" x 12" SAE-6 |
| 6 | 22884 | 2 | •• Hose 1/4 x 33" M-6 x Flat Face Seal |
| 7 | 22886 | 2 | •• Hose 3/8 x 22" M-6 x Flat Face Seal |
| 8 | 22866 | 4 | •• Elbow 90 SAE 6 Face Seal/Adapter |
| 9 | 22696 | 1 | • Super Vee Plow Side Harness |
| 10 | 22691 | 1 | • Universal Truck Side Harness |
| 11 | 05024 | 1 | • Power Cable |
| 12 | 22869X | 1 | • V-71 Controller w/HFP |
| 13 | 15370 | 1 | • Starter Solenoid - 12 Volt |
| | 08366 | 1 | • Hardware Bag 15130 |
| 14 | 15634 | 1 | •• Cover Strap |
| 15 | 20029 | 4 | •• Bolt H 5/16-18 x 1-1/2" Gr. 2 |
| 16 | 20049 | 2 | •• Bolt H 3/8-16 x 1" Gr. 2 |
| 17 | 20152 | 4 | •• Bolt H 5/8-11 x 5" Gr. 5 |
| 17A | 20153 | 2 | •• Bolt H 5/8-11 x 5-1/2" Gr. 5 |
| 18 | 20304 | 4 | •• Locknut 5/16-18 |
| 19 | 20309 | 4 | •• Locknut 5/8-11 |
| 20 | 20327 | 2 | •• Lockwasher 3/8" |
| 21 | 21398 | 2 | •• Self Tapping Screw 1/4-14 x 3/4" |
| 22 | 22866 | 1 | •• Elbow 90 SAE 6 Face Seal/Adapter |
| 23 | 22868 | 5 | •• Straight Fitting SAE-6 Face Seal/Adapter |
| | 08202 | 1 | • Hardware Bag Plug Bracket |
| 24 | 19607 | 1 | •• Plug Bracket |
| 25 | 19609 | 1 | •• Plate |
| 26 | 20027 | 2 | •• Bolt H 5/16-18 x 1 Gr. 2 |
| 27 | 22658 | 2 | •• Bolt H 5/16-18 x 3 Full Thread Gr. 2 |
| 28 | 20326 | 4 | •• 5/16 Lockwasher |
| 29 | 20525 | 4 | •• 5/16-18 Finish Nut |
| 30 | 13333 | 1 | • V-71 Mounting Bracket |
| | 15134 | 3 | • M-1 Hydraulic Fluid Quart |

Parts indented are included in the carton, bag or assembly under which they are indented.

Meyer Products LLC reserves the right, under its continuing product improvement program, to change construction or design details, specifications and prices without notice or without incurring any obligation.



Meyer Products LLC.
18513 Euclid Ave. • Cleveland, Ohio 44112-1084
Phone 486-1313 (Area Code 216)
www.meyerproducts.com • email info@meyerproducts.com

GENERAL INFORMATION

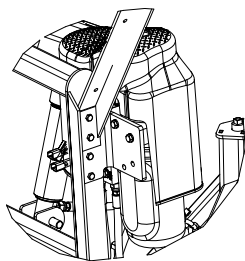
CAUTION: Always disconnect battery prior to installation.

SAFETY PRECAUTIONS should be used when **Quik Lift®** is in a **RAISED** position. **LOWER** plow to the ground when vehicle is **PARKED**.

OVERHAUL and SERVICE information is covered on separate instructions.

Note:

1. Connect ground cable to negative side of battery for a solid connection to ground.
2. Caution: Route all cables away from moving engine parts, Manifolds, and sharp sheet metal.
3. For weather protection, tape all electrical connections at front of vehicle.
4. The vehicle must be equipped with a "Heavy Duty Battery" (70 Amp, Hr. Min.), 550 C.C.A. and "Alternator" (60 Amp. Min.) to obtain maximum performance.
5. Follow these instructions explicitly. Warranty does not apply to a Meyer product which has been negligently or improperly assembled or installed.



V-71 mounting bracket mounts outside of Lift Frame

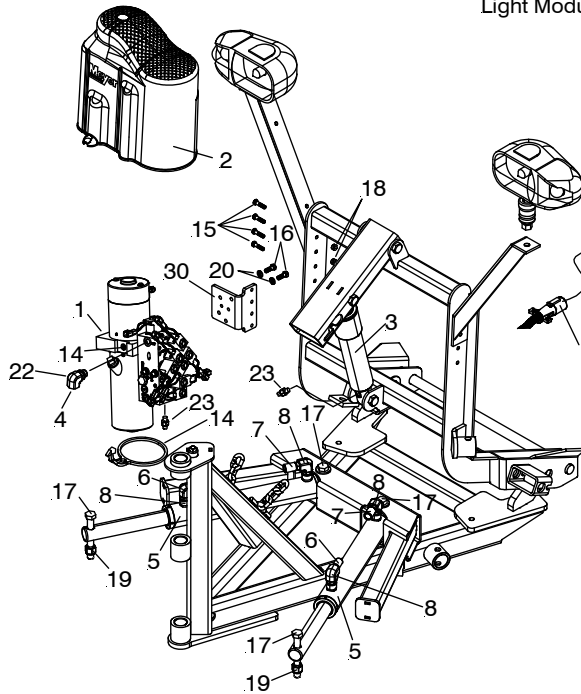


Figure 1

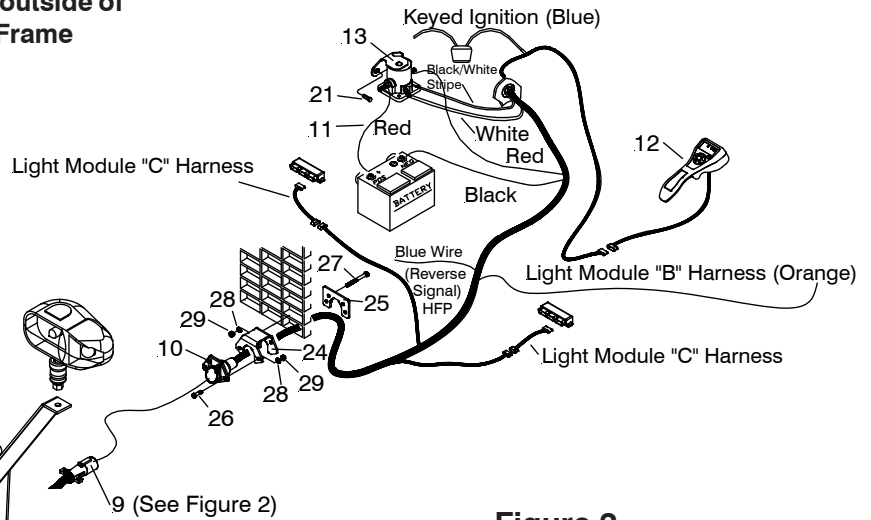
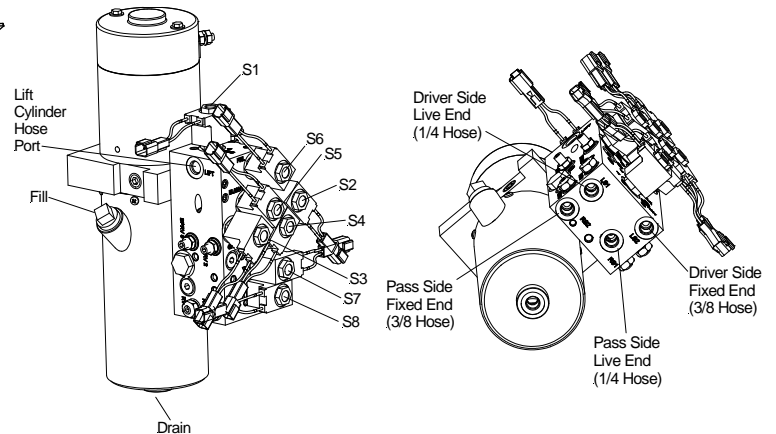


Figure 2



ADDITIONAL BATTERY CONNECTIONS

- When attaching cables to battery with side post terminals, use M.P. Adaptor Part #21976 and attach as shown in Figure 3.
- Figure 3 illustrates the method of using a repair type terminal connector which is original equipment on some vehicles.

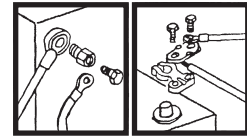


Figure 3

Hydraulic Solenoid Color Code:

OPERATION - SOLENOID COMBINATION

RAISE - Motor Solenoid + S6

LOWER - S1

LEFT ANGLE - Motor Solenoid + S3 + S5 + S8

LEFT EXTEND - Motor Solenoid + S2 + S7

LEFT RETRACT - Motor Solenoid + S3

RIGHT ANGLE - Motor Solenoid + S2 + S4 + S7

RIGHT EXTEND - Motor Solenoid + S5 + S8

RIGHT RETRACT - Motor Solenoid + S4

SCOOP - Motor Solenoid + S2 + S5 + S7 + S8

VEE - Motor Solenoid + S3 + S4

COIL COLOR CODE

MOTOR SOLENOID - WHITE WIRE

S1 - RED WIRE

S2 & S7 - BLACK WIRE

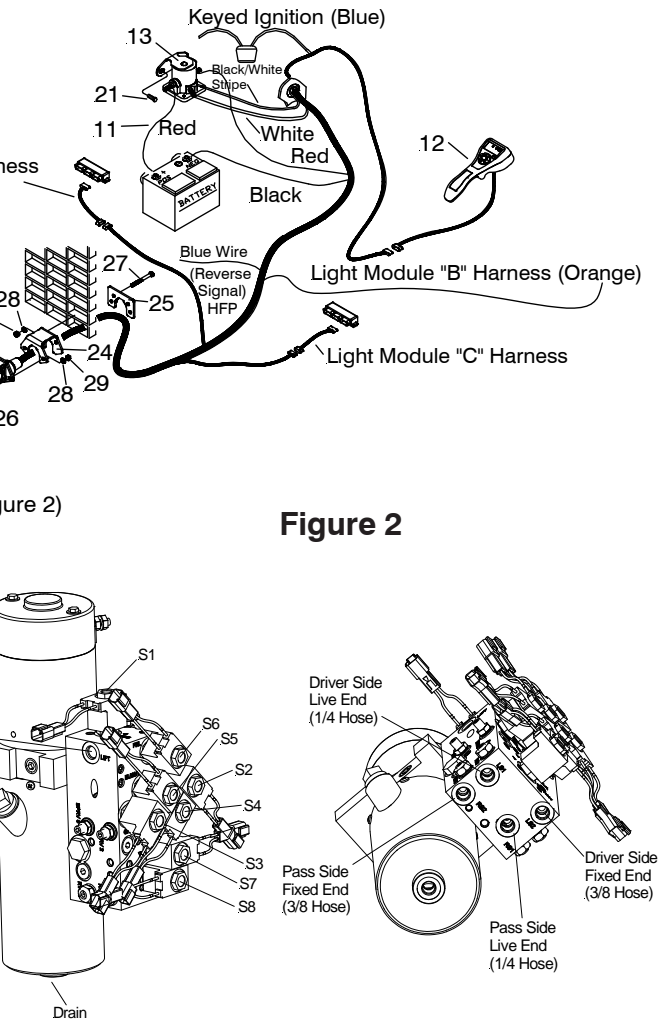
S3 - GREEN WIRE

S4 - YELLOW WIRE

S8 & S8 - BLUE w/WHITE STRIPE

S6 - PURPLE WIRE

GROUND WIRE EACH COIL BLACK W/WHITE STRIPE



INSTALLATION INSTRUCTIONS

- A. Install the V-71 Mounting Bracket (30) to the Lift Frame and Light Bracket (**passenger side**) from the CLF Carton using 5/16-18 x 1-1/2" Bolts (15) and 5/16-18 Locknuts (18). Install the V-71 Lift Assembly (1) to V-71 Mounting Bracket Assembly (30) using Bolt H 3/8-16 x 1" (16) and 3/8 Lockwasher (20).
- B. Attach Lift Arm packed in the CLF Carton to Lift Frame using Bolt H 5/8-11 x 5-1/2" and 5/8-11 Locknut. Attach the Lift Cylinder (3) to the Lift Arm using Bolt H 5/8-11 x 4-3/4" and 5/8-11 Locknut. Attach the Lift Cylinder (3) to the Lift Frame using Bolt H 5/8-11 x 3-1/4" and 5/8-11 Locknut. Attach elbow (22) to V-71 Lift Assembly and attach Straight Fitting (23) a to Lift Cylinder (3). Attach hose (4) to Straight Fitting (23) and then to elbow (22).

WARNING: Lift arm should be removed from vehicle if / when snow plow is removed.

- C. Attach fixed end of Wing Cylinders (5) to the A-Frame with a 5/8-11 x 5" bolt (17) and 5/8-11 locknut (19) on each side.
- D. Attach live end of Wing Cylinder rod (5) to the Wings using a 5/8-11 x 5" bolt (17) and 5/8-11 locknut (19) on each side. Use 5/8-11 x 5-1/2" bolt (17A) on the SVLD Wings
- E. Attach 4 Straight Fittings (23) to the bottom of the V-71 PA Block.
- F. Attach wing cylinder hoses to Straight Fitting (23). Thread hose face seal fittings onto the adapters hand tight. Then tighten locking nut another 30 to 45 degrees of rotation. See Figure 2. **See Figure 5 for hose routing and fitting angles. Use zip ties to secure and route hoses to avoid contact with moving parts of the plow assembly.**
- G. Run Universal Truck Side Harness (10) through a hole in grille and into the engine compartment. Sandwich vehicle grill between Plug Bracket (24) and Plate (25) using Bolt H 5/16-18 x 3" (27), 5/16 Lockwasher (28) and 5/16-18 Finish nut (29). Secure Universal Truck Side Harness (10) to Plug Bracket (24) using Bolt H 5/16-18 x 1" (26), 5/16 Lockwasher (28) and 5/16-18 Finish nut (29).

Caution: Secure Universal Truck Side Harness (10) from any hot / moving parts with tie wraps as needed.

- H. Drill a 1-1/4" Diameter Hole thru firewall to extend the harness into the cab of the vehicle. Fused lead from Universal Truck Side Harness (10) must be attached to terminal in fuse panel that is activated only when the ignition key is "on."
- I. Install Motor Solenoid (13) to metal surface in engine compartment using Self Tapping Screws (21). (Solenoid must be grounded to operate). Attach Red Power Cable (10) to a large terminal on Motor Solenoid (13). Attach Black Ground Cable (10) to negative (-) terminal of battery. Attach Red Power Cable (11) to positive (+) terminal of battery and remaining large terminal on Motor Solenoid (13). Attach small white wire from harness (10) to small terminal (S) on Motor Solenoid (13). Attach small Black/white stripe wire from harness (10) to small terminal (I)(ground) on Motor Solenoid (13) Attach Blue wire to a reverse signal on the vehicle. The blue wire is sensing when the vehicle is in reverse in order to operate HFP (Hands Free Plowing).
- J. Add Meyer M-1 Hydraulic Fluid to reservoir and bleed the Wing Cylinders, proceed as follows:
 - a. Remove Fill Plug from reservoir to add fluid during charging.
 - b. Operate the Wing cylinders (5), one at a time in both directions, until they are filled with Meyer M-1 Hydraulic Fluid and are not spongy.
 - c. Top off the unit to the fill line on the reservoir with Meyer M-1 Hydraulic Fluid.

NOTE: Proper fluid level is to the fill line on the reservoir. It must be checked with the lift and both wing cylinders fully retracted.

For snow plow light installation see separate instructions.

Orange wire on Harness (10) will attach to both orange wires of the "B" harness supplied in the Light Module Kit. Reference Form 1-757

Route Cables "C" (Yellow) from module to Harness (10). Connect both "C" Harness female ends to the male corresponding ends of the Harness (10).

Connect both male ends from the snow plow light to the female ends on the Super-V Plow Side Harness (9).

Check snow plow light blinkers to make sure the wires have not been reversed.

Note: All electrical connections should have both ends coated with a dielectric grease prior to final installation. This will ensure a good connection and help in preventing corrosion.

- K. Refer to Operation and Maintenance Manual for complete controller operation.
- L. After all electrical connections have been made the drop speed of the plow may be evaluated / adjusted. To adjust, loosen up the hex nut and adjust in to slow the drop speed and out to make it faster. After ideal drop speed it achieved, retighten the hex nut. See Figure 4.

After cycling of the plow, recheck oil level.

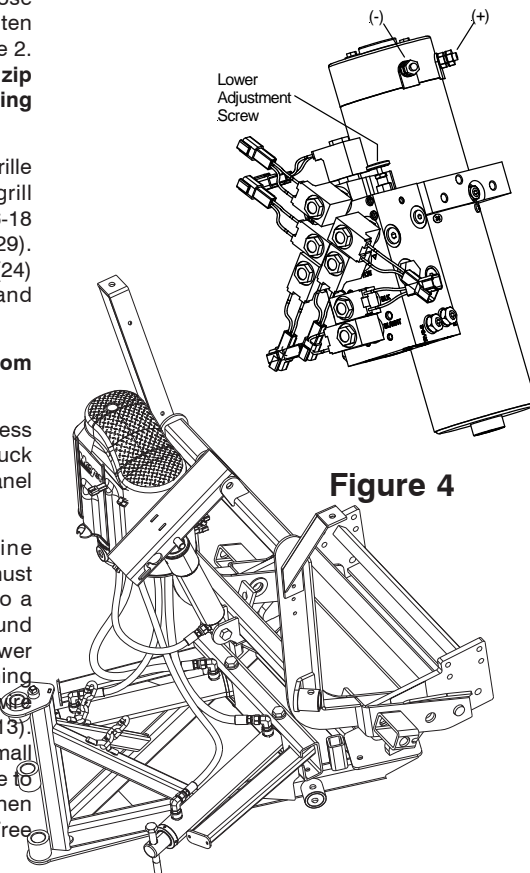


Figure 4

Figure 5