



PARTS & INSTALLATION INSTRUCTIONS

E-72 ELECTRO- LIFT®

with ELECTRO-TOUCH and 1-1/2" x 10" P.A. Rams

Parts List

Item	12 Volt Part No.	24 Volt Part No.	Qty.	Description
	16003	16005	1	Lift and P.A. Ass'y. (Complete)
1	16006	16007	1	• Lift Ass'y. (Unit only)
2	15645	15645	1	• E-72 Lift Unit Cover
3	15370	15446	1	• Starter Solenoid - 12 volt
4	05815	05815	1	• Lift Cylinder 1.75 x 8" SAE 6
5	22883	22883	1	• Hose Ass'y SAE 1/4" x 22" Lg. M-6 Faceseal
6	22690X	22690X	1	• Pistol Grip Controller
7	22691	22691	1	• Universal Truck Side Harness
8	22692	22692	1	• Plow Side Harness
9	05024	05024	1	• Power Cable - 36"
10	13333	13333	1	• Hydraulic Mounting Bracket
	15134	15134	2	• Meyer M-1 Hydraulic Fluid Quart
	07708	07708	1	• Ram L.H. with Hose & Fittings
11	07968	07968	1	•• Ram (1-1/2" x 10")
12	22885	22885	1	•• Hose Ass'y. SAE 1/4 x 54" Lg. M-6 Faceseal
13	22866	22866	1	•• SAE 6 x 90 Degree Elbow M-6 Faceseal
	07709	07709	1	• Ram R.H. with Hose & Fittings
14	07968	07968	1	•• Ram (1-1/2" x 10")
15	22884	22884	1	•• Hose Ass'y. SAE 1/4 x 33" Lg. M-6 Faceseal
16	22866	22866	1	•• SAE 6 x 90 Degree Elbow M-6 Faceseal
	08365	08365	1	• Hardware Bag
17	15634	15634	1	•• Cover Strap
18	20029	20029	4	•• Bolt H 5/16 - 18 x 1-1/2" Gr. 2
19	20049	20049	2	•• Bolt H 3/8 - 16 x 1" Gr. 2
20	20147	20147	2	•• Bolt H 5/8 - 11 x 3 1/2" Gr. 5
21	20150	20150	2	•• Bolt H 5/8 - 11 x 4 1/2" Gr. 5
22	20304	20309	4	•• Locknut 5/16 - 18
23	20309	20309	4	•• Locknut 5/8 - 11
24	20327	20327	2	•• Lockwasher 3/8"
25	21398	21398	2	•• S. Tapping Screw 1/4 - 14 x 3/4"
26	22866	22866	1	•• SAE 6 x 90 Degree Elbow M-6 Faceseal
	08202	08202	1	• Plug Bracket Kit
27	19607	19607	1	•• Plug Bracket
28	19609	19609	1	•• Plate
29	20027	20027	2	•• Bolt H 5/16-18 x 1 Gr. 2
30	22658	22658	2	•• Bolt H 5/16-18 x 3 Gr. 2
31	20525	20525	4	•• Finish Nut 5/16-18
32	20326	20326	4	•• Lockwasher 5/16

Parts indented are included in the carton, bag or assembly under which they are indented.

Meyer Products LLC reserves the right, under its continuing product improvement program, to change construction or design details, specifications and prices without notice or without incurring any obligation.



GENERAL INFORMATION

CAUTION: Always disconnect battery prior to installation.

SAFETY PRECAUTIONS should be used when **Quik Lift®** is in a **RAISED** position. **LOWER** plow to the ground when vehicle is **PARKED**.

OVERHAUL and SERVICE information is covered on separate instructions.

Note:

1. Connect ground cable to negative side of battery for a solid connection to ground.
2. Caution: Route all cables away from moving engine parts, Manifolds, and sharp sheet metal.
3. For weather protection, tape all electrical connections at front of vehicle.
4. The vehicle must be equipped with a "Heavy Duty Battery" (70 Amp, Hr. Min.), 550 C.C.A. and "Alternator" (60 Amp. Min.) to obtain maximum performance.
5. Follow these instructions explicitly. Warranty does not apply to a Meyer product which has been negligently or improperly assembled or installed.

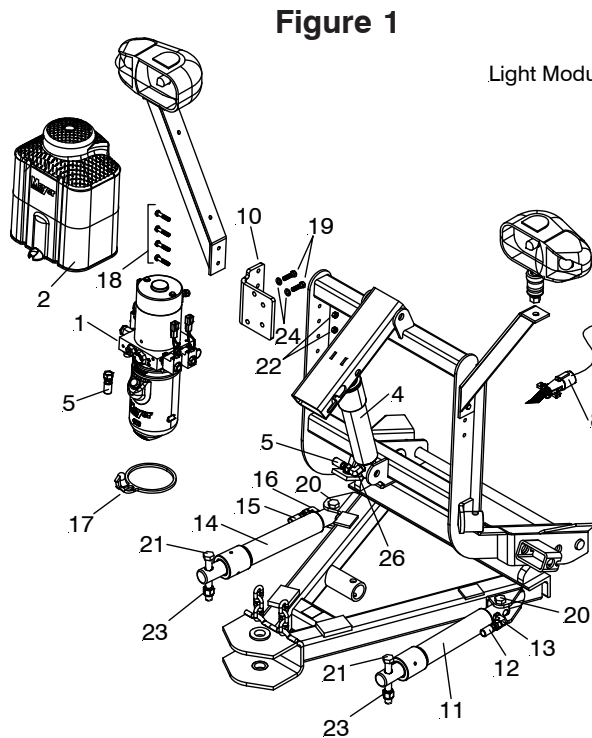


Figure 1

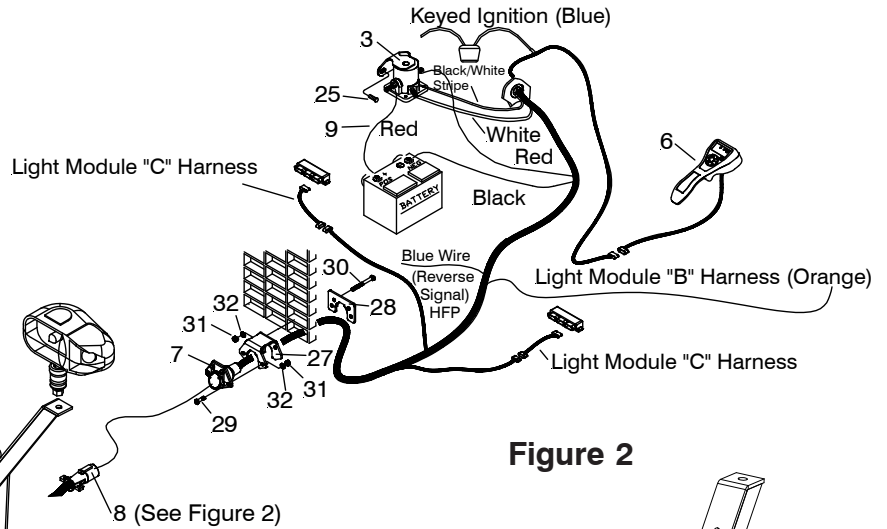


Figure 2

ADDITIONAL BATTERY CONNECTIONS

- When attaching cables to battery with side post terminals, use M.P. Adaptor Part #21976 and attach as shown in Figure 3.
- Figure 3 illustrates the method of using a repair type terminal connector which is original equipment on some vehicles.

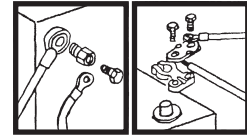


Figure 3

Hydraulic Solenoid Color Code:

OPERATION - SOLENOID COMBINATION

RAISE - Motor Solenoid + "B" Solenoid

LOWER - "A" Solenoid Only

LEFT ANGLE - Motor Solenoid Only

RIGHT ANGLE - Motor Solenoid + "C" Solenoid

COIL COLOR CODE

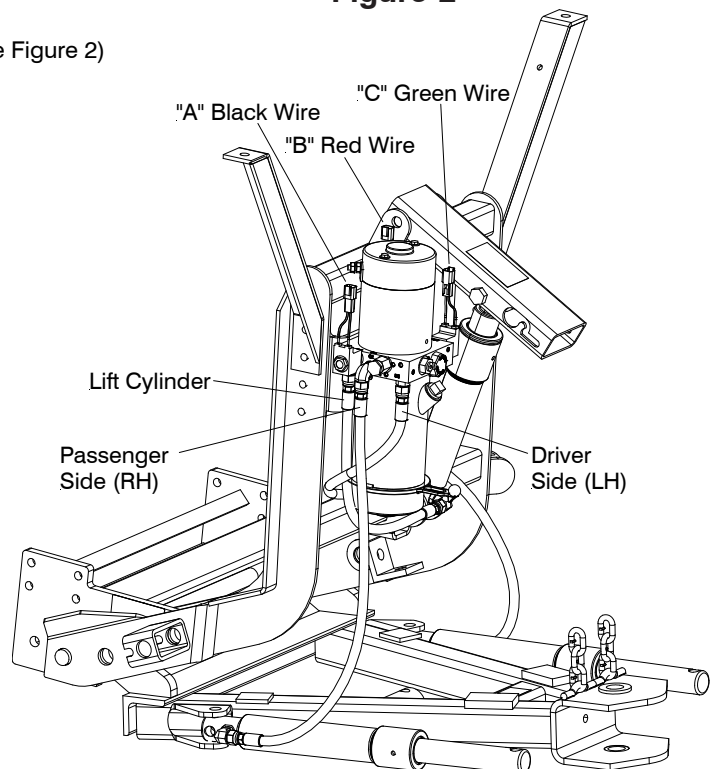
MOTOR SOLENOID - WHITE WIRE

"A" - BLACK WIRE

"B" - RED WIRE

"C" - GREEN WIRE

GROUND WIRE EACH COIL BLACK W/WHITE STRIPE



INSTALLATION INSTRUCTIONS

- A. Install the E-72 Mounting Bracket (10) to the Lift Frame and Light Bracket (**passenger side**) from the CLF Carton using 5/16-18 x 1-1/2" Bolts (18) and 5/16-18 Locknuts (22). Install the E-72 Lift Assembly (1) to E-72 Mounting Bracket Assembly (10) using Bolt H 3/8-16 x 1" (19) and 3/8 Lockwasher (24).
- B. Attach Lift Arm packed in the CLF Carton to Lift Frame using Bolt H 5/8-11 x 5-1/2" and 5/8-11 Locknut. Attach the Lift Cylinder (4) to the Lift Arm using Bolt H 5/8-11 x 4-3/4" and 5/8-11 Locknut. Attach the Lift Cylinder (4) to the Lift Frame using Bolt H 5/8-11 x 3-1/4" and 5/8-11 Locknut. Attach elbow (26) to E-72 Lift Assembly. Attach hose (5) to Straight Fitting on E-72 (see Figure 2) and then to elbow (26).

WARNING: Lift arm should be removed from vehicle if / when snow plow is removed.

- C. Attach fixed end of Angle Cylinders (11 & 14) to the A-Frame with a 5/8-11 x 3-1/2" bolt (20) and 5/8-11 locknut (23) on each side.
- D. Attach live end of Angle Cylinder rod (11 & 14) to the pivot bar using a 5/8-11 x 4-1/2" bolt (21) and 5/8-11 locknut (23) on each side.
- E. Attach angle cylinder hoses (12 & 15) to Straight Fitting on E-72 (see Figure 2). Thread hose face seal fittings onto the adapters hand tight. Then tighten locking nut another 30 to 45 degrees of rotation. See Figure 2. **See Figure 2 for hose routing and fitting angles. Use zip ties to secure and route hoses to avoid contact with moving parts of the plow assembly.**
- F. Run Universal Truck Side Harness (7) through a hole in grille and into the engine compartment. Sandwich vehicle grill between Plug Bracket (27) and Plate (28) using Bolt H 5/16-18 x 3" (30), 5/16 Lockwasher (32) and 5/16-18 Finish nut (31). Secure Universal Truck Side Harness (7) to Plug Bracket (27) using Bolt H 5/16-18 x 1" (29), 5/16 Lockwasher (32) and 5/16-18 Finish nut (31).

Caution: Secure Universal Truck Side Harness (7) from any hot / moving parts with tie wraps as needed.

- G. Drill a 1-1/4" Diameter Hole thru firewall to extend the harness into the cab of the vehicle. Fused lead from Universal Truck Side Harness (7) must be attached to terminal in fuse panel that is activated only when the ignition key is "on."
- H. Install Motor Solenoid (3) to metal surface in engine compartment using Self Tapping Screws (25). (Solenoid must be grounded to operate). Attach Red Power Cable (9) to a large terminal on Motor Solenoid (3). Attach Black Ground Cable (7) to negative (-) terminal of battery. Attach Red Power Cable (9) to positive (+) terminal of battery and remaining large terminal on Motor Solenoid (3). Attach small white wire from harness (7) to small terminal (S) on Motor Solenoid (3). Attach small Black/white stripe wire from harness (7) to small terminal (I) (ground) on Motor Solenoid (3). Attach Blue wire to a reverse signal on the vehicle. The blue wire is sensing when the vehicle is in reverse in order to operate HFP (Hands Free Plowing).
- I. Add Meyer M-1 Hydraulic Fluid to reservoir and bleed the Angle Cylinders, proceed as follows:
 - a. Remove Fill Plug from reservoir to add fluid during charging.
 - b. Operate the Angle cylinders (11 & 14) until they are filled with Meyer M-1 Hydraulic Fluid and are not spongy.
 - c. Top off the unit to the fill line on the reservoir with Meyer M-1 Hydraulic Fluid.

NOTE: Proper fluid level is to the fill line on the reservoir. It must be checked with the lift cylinder fully retracted.

For snow plow light installation see separate instructions.

Orange wire on Harness (7) will attach to both orange wires of the "B" harness supplied in the Light Module Kit. Reference Form 1-757

Route Cables "C" (Yellow) from module to Harness (7). Connect both "C" Harness female ends to the male corresponding ends of the Harness (7).

Connect both male ends from the snow plow light to the female ends on the Plow Side Harness (8).

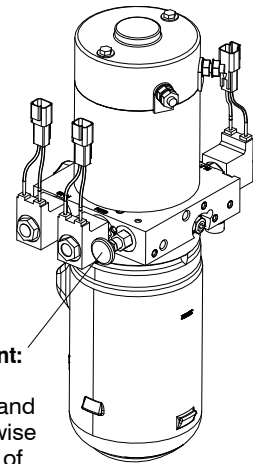
Check snow plow light blinkers to make sure the wires have not been reversed.

Note: All electrical connections should have both ends coated with a dielectric grease prior to final installation. This will ensure a good connection and help in preventing corrosion.

- J. Refer to Operation and Maintenance Manual for complete controller operation.
- K. After all electrical connections have been made the drop speed of the plow may be evaluated / adjusted. To adjust, loosen up the hex nut and adjust in to slow the drop speed and out to make it faster. After ideal drop speed it achieved, retighten the hex nut. See Figure 4.

After cycling of the plow, recheck oil level.

Figure 4



Lower Adjustment:

Loosen jam nut and turn knob clockwise to slow the drop of the plow and counter clockwise to speed the drop of the plow